

Little Martin's Breast Pump
User Manual
 For Model BBP1607

In order to ensure you and your child's safety, please be sure to read this manual before using this product, and use it correctly.

- Please keep this manual in a safe place.
- When assembling parts, please be sure to carefully read the manual before doing so.
- Read and follow instructions on product cleaning, and pay attention to the directions on milk storage and thawing.
- When giving this away as a gift, please be sure to include this manual.

Contents

Before using1
 Cleaning2
 Name of the parts3
 The motor unit4
 Preparing for pumping4
 Tips6
 Expressing7
 Storing and thawing breast milk9
 Troubleshooting10
 Certificate of qualityon the back cover

Before Using

- This product is designed to be a personal item. It is only intended for repeated use by one user to avoid bacterial or virus infection.
- Do not expose the breast pump directly under sun.
- Keep it out of the reach of children.
- Carefully read through the warnings, safety tips and operating instructions to use the product safely and correctly. When used incorrectly, it could lead to injury or the product getting damaged.

Cleaning

Before using for the first time and after every use:

- STEP 1.** Disassemble the pump set into individual parts.
- STEP 2.** Rinse all parts with cold, clear water (approx. 20 °C).
- STEP 3.** Clean all parts with plenty of warm soapy water (approx. 30 °C).
- STEP 4.** Rinse all parts with cold, clear water (approx. 20 °C) for 10 to 15 seconds.
- STEP 5.** Dry with a clean cloth or leave to dry on a clean cloth.

As an alternative to steps 2, 3, and 4, if you clean the individual parts of the pump set in the dishwasher, place them on the top rack or in the cutlery section.

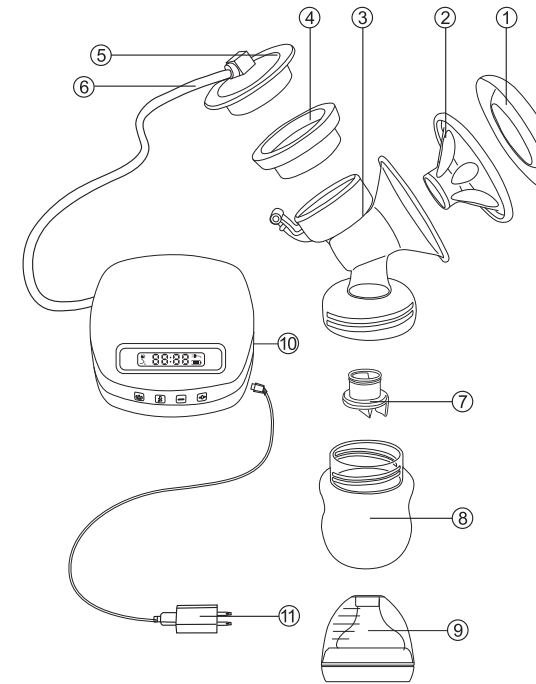
- Before using for the first time and once a day, as daily maintenance, apart from the steps 1 to 5:
- To sterilize the pump set, cover all parts with water and boil for 5 minutes.
 - To clean the motor unit, wipe off with a clean and damp cloth.

Attention

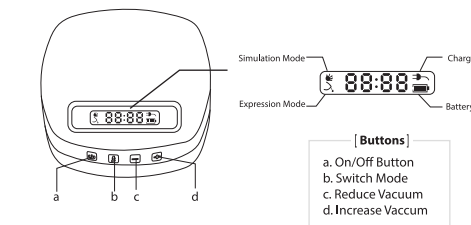
- Take apart and wash all parts that come in contact with the breast and breast milk immediately after use to avoid dry up of milk residues and to prevent growth of bacteria.
- Be careful when you remove and clean the valve. If the valve gets damaged, the breast pump cannot function properly. To remove the valve from the pump set, pull it out gently. To clean the valve, rub it gently by fingers in warm water. Do not insert any object into the valve which may cause damage.

Name of Parts

- ① Breastshield Cap
- ② Breastshield
- ③ Pump Body
- ④ Silicone Membrane
- ⑤ Pump Cover
- ⑥ Tubing
- ⑦ Valve
- ⑧ Breastmilk Bottle
- ⑨ Feeding Nipple
- ⑩ Main Unit
- ⑪ AC Adapter



The Motor Unit



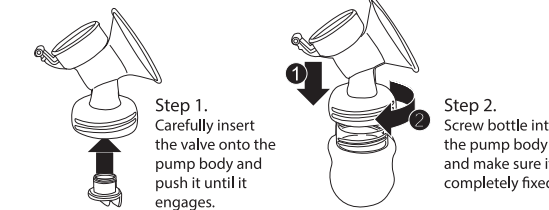
Preparing for Pumping

Warning

1. Use accessories supplied by Little Martin's Drawer only.
2. Be sure the voltage of the AC adapter is compatible with the power source.
3. Check pump set components for wear or damage before use and replace if necessary.
4. All components must be completely dry before use.
5. Wash your hands thoroughly (at least one minute) with soap and water before touching the breast and cleaned pump parts.

Before using for the first time, make sure you have cleaned and sterilized all parts of the breast pump.

Please carefully read the assembling instruction and assemble the pump set correctly. Otherwise a good vacuum may not be achieved.



Warranty Certificate

This certificate promises our customers that they will receive free repair. If you notice any problems listed below within the warranty period, please contact our customer service with this certificate.

1. Once you have used this product, we basically will not offer exchange/return.
2. When the product is damaged (after proper use) within the warranty period which is a year from the purchase date, we will repair it for free. Contact us via email support@littlemartinsdrawer.com, and send the product over to our customer center.
3. Even within the warranty period, in the following situation the repair process will come with a fee.
 - a. Natural discoloration of the plastic area.
 - b. Damage due to misuse of the product.
 - c. Damage due to fire, water, earthquake and other natural disasters.
 - d. Damage due to commercial or business usage.
 - e. The shipping fee for paid repair.
4. This service will apply only inside United States.
5. Once the product is out of production and certain parts are out of stock, we will not be able to offer certain repairs.

LOT BATCH CODE
 SEE THE LOT NUMBER ON THE LABEL ON THE CASE COVER

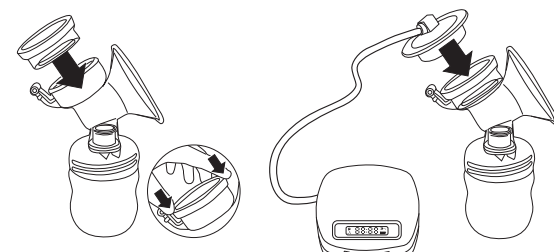
1 CONSULT INSTRUCTIONS FOR USE

100% RECYCLABLE

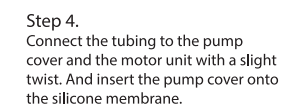
WASTE FROM ELECTRICAL AND ELECTRONIC EQUIPMENT (WEEE)



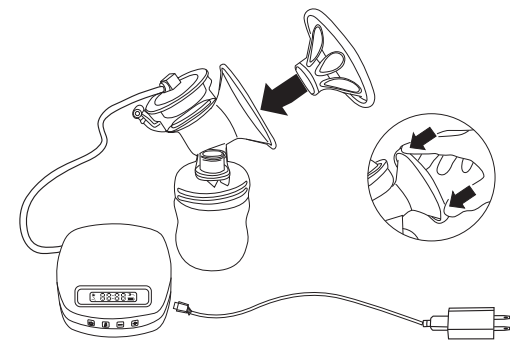
Preparing for Pumping



Step 3. Push the silicone membrane onto the pump body, and make sure it fits the rim tightly by pressing down with your fingers to ensure a perfect seal.



Step 4. Connect the tubing to the pump cover and the motor unit with a slight twist. And insert the pump cover onto the silicone membrane.



Step 5. Carefully push the breastshield onto the pump body. Press the petals to remove any trapped air. Make sure it is perfectly sealed. Install the AC adapter to the motor unit if its battery runs out of power and then you may use the breast.

Tips

It is recommended (except advised otherwise by your breastfeeding advisor) to wait until your milk supply and breastfeeding schedule are built up before starting pumping. It normally takes at least 2 to 4 weeks after your baby is born.

Exception

- If you are expressing milk in hospital.
- If your breasts are engorged or painful, express a small amount of milk before or between feeds to ease the pain and to help your baby latch on more easily.
- If you have sore or cracked nipples, you may wish to express milk until they are healed.
- If you have been separated from your baby and wish to continue to breastfeed when you are reunited, express your milk regularly to stimulate your milk supply.

To express milk successfully, choose the best timing during a day, for example, in the morning when you have abundant milk, or before or after the first expressing in the day. You may also express milk during work time. Choose a time when you are not in a rush or being interrupted.

Practice several times to use correctly and familiarize yourself with the breast pump. A picture of your baby can help encourage the "let-down" reflex. A warm environment may also help.

Try to express after a bath or shower, or place a warm cloth on your breast for a few minutes before you start expressing. You may find it easier to express while your baby is feeding from the other breast, or immediately after a feed.

If your nipple becomes painful, stop expressing and consult your breastfeeding and lactation consultant or midwife.

Expressing

Wash your hands thoroughly. Wipe the breast with a warm washcloth (do not use alcohol). Relax in a comfortable chair (you may want to use a cushion to support your back). Put a glass of water nearby.

- STEP 1.** Place the breastshield on your breast, and make sure your nipple is properly centered in the tunnel, so that the breastshield cushion will create an airtight seal.
- STEP 2.** Switch the breast pump with on/off button. The breast pump automatically starts in stimulation mode and the screen shows "S". You may adjust the vacuum power according to your preference.
- STEP 3.** Hold the breastshield onto your breast with your thumb and index finger. Support your breast with the palm of your hand.
- STEP 4.** If your milk start to flow, press the switch mode button to change to the expression mode. Make sure the milk is flowing into the bottle properly. The vacuum can be adjusted in every mode by pressing "+" and "-" buttons. There are 10 levels in each mode (20 levels in total) that you can choose from depending on your personal comfort.
- STEP 5.** When you have finished expressing, switch off the breast pump and carefully remove the pump body from your breast.
- STEP 6.** Unscrew the bottle from the pump body ready for feeding or storage. Clean the other used parts of the breast pump according to previous instructions.
- STEP 7.** Unplug the motor unit if it is connected to a power source.

Expressing

Warning

- Only fill the bottle to the 150ml mark.
- Do not kink the tubing during expression.
- Do not hold the pump set by the bottle. This can lead to blockage of the milk ducts and engorgement.
- Always disconnect the breast pump from the power source after expression.

Warning

- Little Martin's breast pump switches off automatically if it has been running for 30 minutes with no manipulations.
- Little Martin's breast pump can memorize your customized setting before it switches off.

Storing and Thawing Breast Milk

Storage

After expressing milk, screw the storage cap onto the milk bottle tightly. Alternatively, you can use storage bags (to be sold separately). Do not fill the bottles or bags more than ¾ full to allow space for possible expansion. The expressed breast milk must be put into a refrigerator immediately. Do not store breast milk in the door of the refrigerator. Instead choose the coldest part of the refrigerator.

Breast Milk Storage Guidelines			
Room Temperature	Refrigerator	Refrigerator	Deep Freeze
66-78 °F	39 °F or less	Freezer	Freezer Unit 0 °F
4 to 6 hours	3 to 8 days	3 to 4 months	6 to 12 months

Thawing

You can thaw the breast milk with a milk warmer, or in a bowl of warm water. To preserve the components of the breast milk, thaw the frozen milk in the refrigerator overnight. Alternatively, rinse the bottle/bag with flowing warm water (max. 37 °C). Gently swirl the bottle/bag to mix the separated fat in the milk uniformly. Do not shake or stir the milk.

Warning

- The unfrozen breast milk cannot be frozen again!
- Never mix the fresh breast milk with unfrozen milk.
- Do not thaw frozen breast milk or do not warm breast milk in a microwave or a pan of boiling water to avoid the loss of vitamins, minerals and other important components and to prevent burns.

Troubleshooting

If there is lack of suction	Check the valve and silicone membrane are clean and not damaged. Ensure the valve is correctly attached to pump body. Ensure the silicone membrane fits the pump body tightly. Ensure the breastshield forms a perfect seal around the breast. Check all connections. Check the ends of the tubing fit securely into the back of the pump body and into the port on the motor unit. Do not kink the tubing during expression.
If you are unable to express milk	Ensure the suction is sufficient. Ensure the the assembling is correct. Ensure the operation complies with the instructions in this manual. Relax and retry, and milk would be expressed after several trials.
If the expressing becomes painful	Try other levels of suction power. Please be noted too much suction may be a reason of the pain. You may not need the maximum suction produced by the breast pump. Consult breastfeeding experts if above suggestion does not resolve the problem.
If the motor is not working	Check the battery level. When connected to a power source, check presence of mains current.
If condensation appears in the tubing	Rinse out the tubing. Shake out any water droplets. Hang up the tubing to air-dry.
If milk gets into the tubing	When connected to a power source, switch off the pump and disconnect from power source. Remove and clean the tubing. Shake out water droplets and hang to air-dry.