

# THE SQUISHY BRAIN

The left side of your brain is on your left side—and the right is on your right. But, as you put together this model, it's going to seem backward. This is because you are facing the brain model. Imagine if you were facing your friend. His left side is on your right—and his right is on your left. Right? Look for the markings on all the pieces that have two parts. This should help you out. If you are still having trouble, ask for help. Two heads (or three) are better than one!

## ALL THE PARTS

### CRANIUM:

- (A) SPINAL CORD
- (B) SKULL BASE
- (C) OCCIPITAL BONE
- (D) TEMPORAL BONES (2 PIECES, LEFT AND RIGHT)
- (E) FACE PIECE: INCLUDES SPHENOID, ETHMOID, AND 13 OTHER BONES PLUS SQUISHY EYEBALLS
- (F) PARIETAL BONES (2 PIECES, LEFT AND RIGHT)
- (G) FRONTAL BONE
- (H) MANDIBLE AND RUBBER BAND

### BRAIN:

- (I) CEREBELLUM (2 PIECES, LEFT AND RIGHT)
- (J) CEREBRUM-BOTTOM (2 PIECES, LEFT AND RIGHT)
- (K) CEREBRUM-TOP (2 PIECES, LEFT AND RIGHT)
- (L) BRAIN STEM (2 PIECES, LEFT AND RIGHT)

### TOOLS:

- (M) FORCEPS
- (N) TWEEZERS
- (O) SCALPEL



NOTE:  
THE VERTEBRAE OF THE SPINAL CORD ARE TIED TOGETHER WITH SILVER WIRE THAT REPRESENTS BLOOD VESSELS.

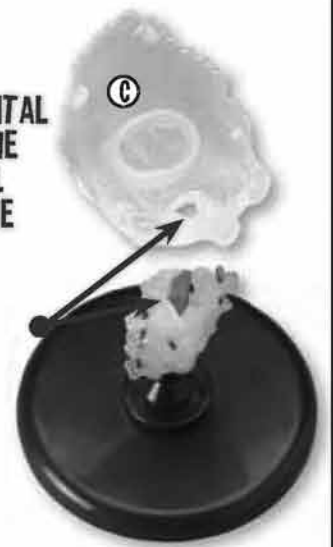
TWIST AND REMOVE THE PLASTIC BAR ON THE MANDIBLE BEFORE PUTTING TOGETHER YOUR SQUISHY BRAIN MODEL.

RUBBER BAND!

1 INSERT THE SPINAL CORD INTO THE BASE. MATCH UP THE KEY NOTCHES.



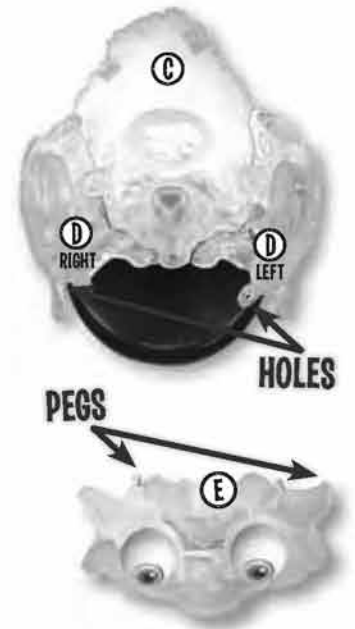
2 SNAP THE OCCIPITAL BONE ONTO THE SPINAL CORD. MATCH UP THE TRIANGLE NOTCHES.



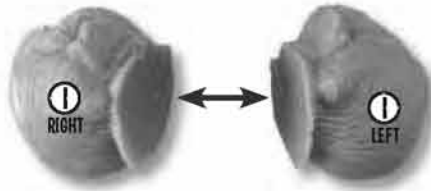
3 PRESS THE PEGS OF THE RIGHT TEMPORAL BONE INTO THE HOLES ON THE RIGHT SIDE OF THE OCCIPITAL BONE, AS SHOWN. THEN ATTACH THE LEFT SIDE.



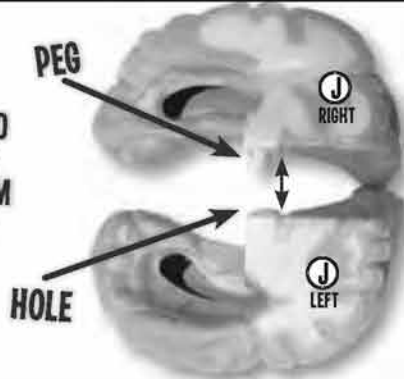
4 PRESS THE PEGS OF THE FACE PIECE INTO THE HOLES IN THE SKULL IN PROGRESS.



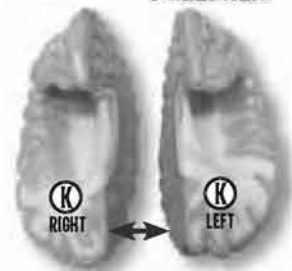
**5** STICK THE TWO SIDES OF THE CEREBELLUM TOGETHER.



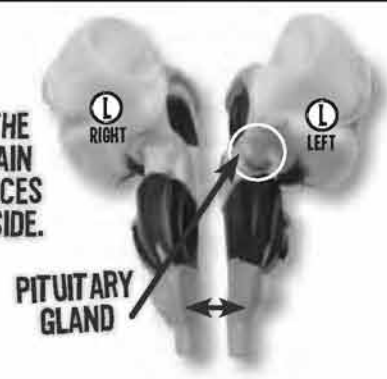
**6** ATTACH THE TWO BOTTOM PIECES OF THE CEREBRUM USING THE PEG AND HOLE. PRESS THEM TOGETHER.



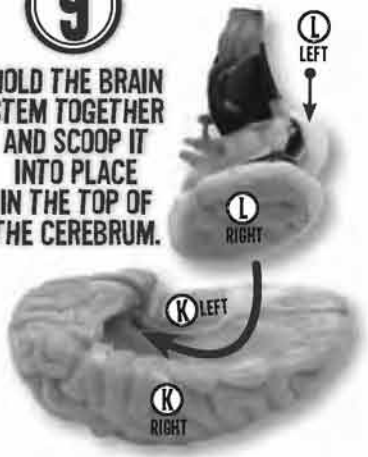
**7** STICK THE TWO TOP CEREBRUM PIECES TOGETHER.



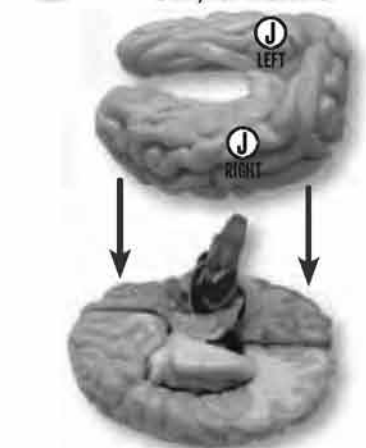
**8** PLACE THE TWO BRAIN STEM PIECES SIDE BY SIDE.



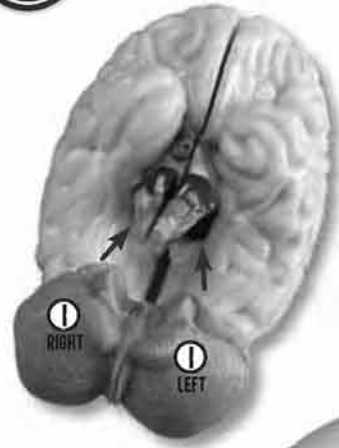
**9** HOLD THE BRAIN STEM TOGETHER AND SCOOP IT INTO PLACE IN THE TOP OF THE CEREBRUM.



**10** FIT THE BOTTOM OF THE CEREBRUM ONTO THE TOP, AS SHOWN.



**11** FIT THE CEREBELLUM INTO THE BRAIN.



**12** PLACE THE BRAIN INTO THE SKULL. THE CEREBELLUM GOES IN THE BACK.

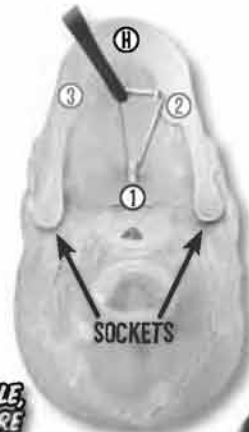


**13** MATCHING UP PEGS TO HOLES, PRESS THE LEFT AND RIGHT PARIETAL BONES ONTO THE BUILT SKULL SHELL.



**14** FIT THE MANDIBLE INTO THE TWO SOCKETS.

- 1 ATTACH THE RUBBER BAND TO THE HOOK ON THE UNDERSIDE OF THE SKULL.
- 2 & 3 WIND THE RUBBER BAND AROUND THE TWO HOOKS ON THE MANDIBLE.



*IF YOU'RE HAVING TROUBLE, TAKE THE BASE OFF BEFORE ATTACHING THE RUBBER BAND.*



*FRIEND, YOU'VE GOT YOURSELF A WORKING BRAIN MODEL!*

*THE SPINAL CORD COMES ASSEMBLED. IF YOU TAKE IT APART, HERE'S HOW TO REASSEMBLE IT.*

### SPINAL CORD

SLIDE EACH VERTEBRA ONTO THE SPINAL CORD, AS SHOWN. THE NAMES—C1, C2, C3, AND C4—ARE MARKED ON EACH PIECE.

