

PRODUCT CODE: 60163022

# E.SYPRESS COMPACT

PRESSURE SWITCH CONTROLLED SINGLE PUMP COMPACT DESIGN

The DAB E.sypress "Compact" is a wall mounted, cabinet style pressurisation unit for heating and chilled water applications. Designed specifically where available space is a problem, the E.sypress compact offers simple installation and operation with space saving advantages.



E.sypress Compact model specification:

- Zintec steel powder coated cabinet housing
- 2.6 Litre (actual) mains storage tank size
- Wall mounting bracket supplied
- Single pump
- 0-6 Bar system pressure
- Corrosion resistant pipework
- Non return valve
- Single Phase / 240 Volt / 50 Hz

TYPE	CODE
CONTROL TYPE	PRESSURE SWITCH
NUMBER OF PUMPS	1
CABINET ENCLOSURE	YES
WALL/FLOOR MOUNTING	WALL
OPERATING RANGE	0.7 - 3.0 BAR



### E.SYPRESS DIMENSIONS

- 345mm (Width) x 430mm (Height) x 180mm (Depth)
- Allow additional 35mm width for connections

Connections	Type
Inlet	½" BSP (Male)
Overflow	22mm Plastic (Female)
Outlet	½" BSP (Male)
Mains electrical	3-core cable (0.75mm)
	1 m fly lead via M13 gland

PRODUCT CODE: 60163023

# E.SYPRESS 1

PRESSURE SWITCH CONTROLLED SINGLE PUMP UNIT

The DAB E.sypress "1" is a wall or floor mounted, cabinet style pressurisation unit for heating and chilled water applications. Designed specifically for commercial and light industrial use. E.sypress 1 offers simple installation and operation with mechanical high and low pressure switch control and operation.



E.sypress Compact model specification:

- Zintec steel powder coated cabinet housing
- 2.6 Litre (actual) mains storage tank size
- Wall mounting bracket supplied
- Single pump
- 0-6 Bar system pressure
- Corrosion resistant pipework
- Non return valve
- Single Phase / 240 Volt / 50 Hz

TYPE	CODE
CONTROL TYPE	PRESSURE SWITCH
NUMBER OF PUMPS	1
CABINET ENCLOSURE	YES
WALL/FLOOR MOUNTING	WALL OR FLOOR
OPERATING RANGE	0.7 - 3.0 BAR

### E.SYPRESS 1 DIMENSIONS

- 382mm (Width) x 600mm (Height) x 282mm (Depth)
- Allow additional 35mm width for connections

Connections	Type
Inlet	½" BSP (Male)
Overflow	22mm Plastic (Female)
Outlet	½" BSP (Male)
Mains electrical	3-core cable (0.75mm)
	1 m fly lead via M13 gland

# E.SYPRESS E1

## DIGITAL ELECTRONIC SINGLE PUMP UNIT

The DAB E.sypress "E1" is a floor or wall mounted, cabinet style pressurisation unit for heating and chilled water applications. Designed specifically for commercial and light industrial use. E.sypress E1 offers simple installation and operation with electronic digital control and operation.



E.sypress E1 model specification:

- Zintec steel powder coated cabinet housing
- 2.6 Litre (actual) mains storage tank size
- Wall mounting bracket supplied
- Single pump
- 0-6 Bar system pressure
- Corrosion resistant pipework
- Non return valve
- Single Phase / 240 Volt / 50 Hz

Connections	Type
Inlet	½" BSP (Male) plastic
Overflow	28mm Brass comp
Outlet	15mm Brass comp
Mains electrical	3-core cable (0.75mm)
	1 m fly lead via M13 gland

TYPE	CODE
CONTROL TYPE	ELECTRONIC
NUMBER OF PUMPS	1
CABINET ENCLOSURE	YES
WALL/FLOOR MOUNTING	WALL OR FLOOR
OPERATING RANGE	0.7 - 3.0 BAR



### E.SYPRESS E1 DIMENSIONS

- 382mm (Width) x 600mm (Height) x 282mm (Depth)
- Allow additional 35mm width for connections

# E.SYPRESS E2

## DIGITAL ELECTRONIC TWIN PUMP UNIT

The DAB E.sypress "E2" is a floor or wall mounted, cabinet style pressurisation unit for heating and chilled water applications. Twin pump operation for duty standby support. Designed specifically for commercial and light industrial use. E.sypress E2 offers simple installation and operation with electronic digital control and operation.

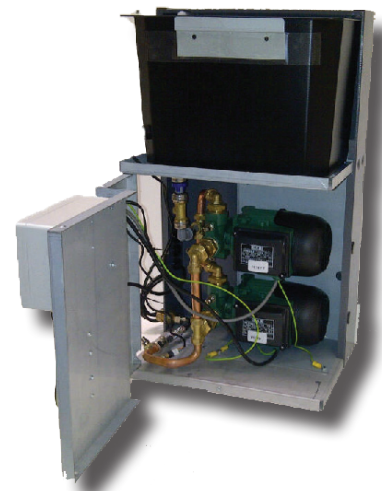


E.sypress E2 model specification:

- Zintec steel powder coated cabinet housing
- 2.6 Litre (actual) mains storage tank size
- Wall mounting bracket supplied
- Single pump
- 0-6 Bar system pressure
- Corrosion resistant pipework
- Non return valve
- Single Phase / 240 Volt / 50 Hz

Connections	Type
Inlet	½" BSP (Male) plastic
Overflow	28mm Brass comp
Outlet	15mm Brass comp
Mains electrical	3-core cable (0.75mm)
	1 m fly lead via M13 gland

TYPE	CODE
CONTROL TYPE	ELECTRONIC
NUMBER OF PUMPS	2
CABINET ENCLOSURE	YES
WALL/FLOOR MOUNTING	WALL OR FLOOR
OPERATING RANGE	0.7 - 3.0 BAR



### E.SYPRESS E2 DIMENSIONS

- 382mm (Width) x 600mm (Height) x 282mm (Depth)
- Allow additional 35mm width for connections

# PUMPS SPECIFICATION

## INTEGRATED TURBINE TYPE BOOSTER PUMP

### PUMP DESCRIPTION

Peripheral type centrifugal electric pump designed to generate flow and pressure.

Applications include pressurisation of heating and chilled water systems, domestic water boosting water supply and draining or filling cisterns.

### CONSTRUCTION FEATURES OF THE PUMP

Pump body, pump support and impeller made completely in Brass.

Shaft with rotor made in stainless steel.

Motor shaft mechanical seal arrangement with viton o-ring gasket.

### CONSTRUCTION FEATURES OF THE MOTOR

Induction motor, closed and cooled with external fan ventilation.

Rotor mounted on greased for-life

bearings, oversized and selected to guarantee greater noise reduction and higher durability.

Built-in thermal overload and current overload motor protection as standard with auto-resetting.

Constructed in accordance with the IEC 2-3 IEC61-69 (EN 60335-2-41) standards.

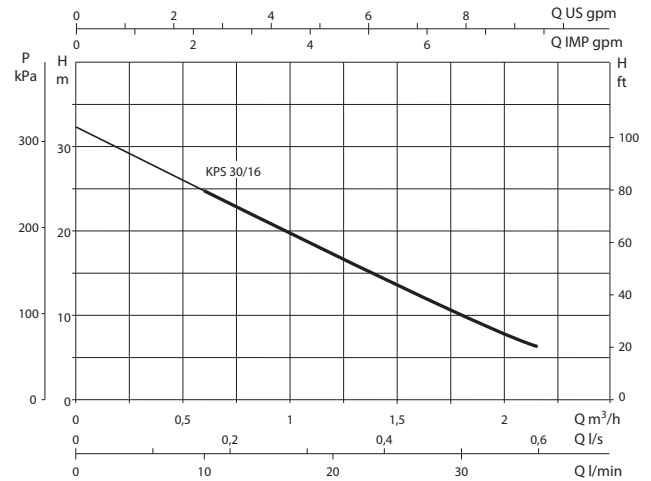
Motor Protection Class: IP44 Electrical terminal box protection class: IP55

Insulation Class: F

Standard Voltage: 220-240 Volt Single-Phase 50 Hz

Motor Rating: Continuously rated operation

### PERFORMANCE



KP 30/16 MB

### ELECTRICAL DATA

VOLTAGE 50 Hz	P2 NOMINAL		In A	DNA	DNM	KG	
	P1 MAX kW	kW					HP
1 x 230 V ~	0,47	0,37	0,5	2	1" G	1" G	5,4

# EXPANSION VESSELS

## HEATING AND CHILLED WATER SYSTEMS

To accompany our range of E.SYPRESS pressurisation units, DAB offer a large comprehensive range of expansion pressure vessels. All vessels suitable for heating or chilled water applications and hold full WRAS approval for drinking water standards. All pipe connections made in stainless steel.

RANGE	SPECIFICATION
CAPACITY	From 2 Litre to 1000 Litre
DESIGN	Vertical or horizontal
MAX PRESSURE	8 Bar, 10 Bar & 16 Bar on request
MAX TEMPERATURE	-10 °C to +99 °C
CONNECTION SIZE	From ½" to 2" BSP threaded



**WRAS**  
APPROVED  
PRODUCT

WRAS approved to drinking water standards

Units 4&5, Stortford Hall Ind Park, Bishops Stortford, Herts CM23 5GZ - Phone +44 (0)1279 652776 - Fax +44(0) 1279 657727

[www.dabpumps.co.uk](http://www.dabpumps.co.uk)



Please scan this code with your smart phone or QR reader for more on-line information.

