

Installations: Michael Murphy Furniture & Carpets, Newbridge, Co. Kildare.

From RVR



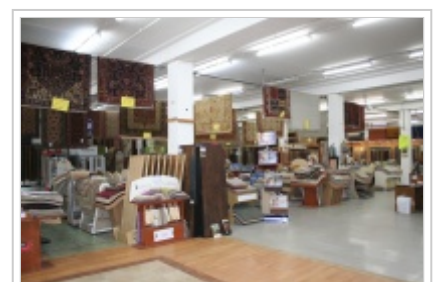
In Newbridge County Kildare, Michael Murphy's name is synonymous with quality furniture, carpets, paint and pretty much anything which one could possibly imagine that you would like to purchase to kit out your new home or re-model your existing property in real style. This local institution has been hugely successful as a result of talented individuals with plenty of imagination, willingness to work hard and the provision of good old-fashioned customer service. Despite enormous competition from the globalised world of multi-national stores which have sprung up throughout Ireland, Michael Murphys one-stop-shop has prospered so much so that a new outlet has been opened in New Ross, Co. Wexford



The Newbridge outlet was recently fitted with 2 x MHG HT225 and 1 x HT150 MHG condensing gas boilers containing a total of 8 x 75 kW boiler modules which can generate anything from 30 kW up to 600 kW of power. A built-in cascade manager optimises efficiency and ensures that the workload is evenly distributed among each of the heat exchangers. The original heat distribution system which consists of fan coils suspended



MHG Procon HT225



MHG Procon HT225

from the overhead roof structure was retained as there are all in good condition. A large 8" common low loss header was fabricated in the new plantroom by Niall Murphy of Kevin Murphy Heating & Plumbing with the in-built boiler pumps acting as shunt pumps and the existing pumps being used as secondary circulators for conveying the hot water to the fan coils. This arrangement eliminated the need for any works to be carried out within the busy retail area which meant that customer services was uninterrupted at all times.

The New Ross facility was constructed in a purpose-built modern retail park which is located just off the main Wexford Road on the outskirts of the town. In this case, the extremely low level of heat loss from the building, which is due primarily to the use of composite panels, means that just 2 x HT225 boilers are required to heat the entire complex. Another RVR product, the Domusa Sanit V 150 litre stainless steel calorifier, was chosen to provide an ample supply of hot water to cater for the staff and customer service areas.

Retrieved from "http://www.rvr.ie:900/index.php?title=Installations:_Michael_Murphy_Furniture_%26_Carpets%2C_Newbridge%2C_Co._Kildare."