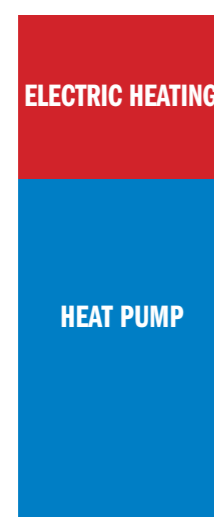


Save Money!



Ordinary electric boiler

An air/water heat pump is often marketed together with a simple electric boiler. The pump and the boiler each have a control unit. If you want to connect a solar panel as well, you need yet another control unit to collaborate with the other two. It is obvious that it will be difficult to get these three "brains" to collaborate. Elomax has one really smart solution instead, which can do everything.

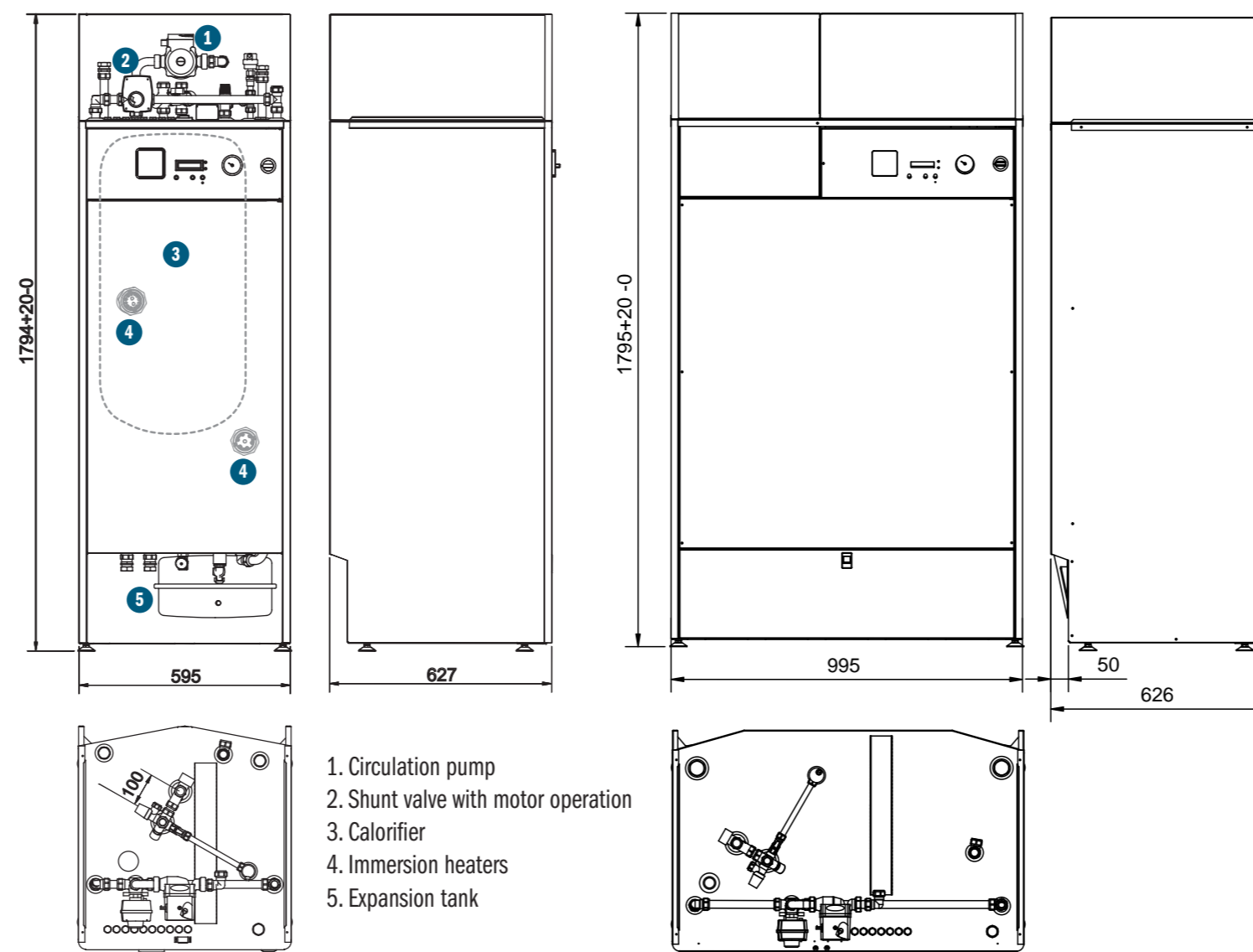


Smart Elomax

Elomax can control your heating system and get your heat pump, solar panel and electric boiler to save you money. The cheapest heating source is always fully utilised. The control system learns the heat requirements of the house and "thinks" deeply before it lets its immersion heaters start up. Elomax becomes the sole "boss" in your boiler room.

An example

It is the morning after a cold night. The sun comes out slowly. The temperature in the boiler has fallen somewhat during the night, although the heat pump was running at full speed. An ordinary electric boiler would not hesitate at this moment – it would switch on the electric heating to support the heat pump. And the electricity meter would start to turn, of course. Elomax is smarter, and notices that the temperature is on the way up, the day is dawning. Instead of switching the immersion heater on, it realises that the heat pump will be able to supply all the heat that the house needs with no problems, and lets it keep running. The electric heating is not switched on and you have saved money.



1. Circulation pump
2. Shunt valve with motor operation
3. Calorifier
4. Immersion heaters
5. Expansion tank

Technical data:

Rated power 13.1 kW
 Calorifier 100 litre (copper lined)
 Total water volume Elomax 250, 250 litre
 Total water volume Elomax 450, 450 litre
 Operating pressure 2,5 bar
 12 litre exp tank*
 2 x 16 character display
 Dimensions as above.

*Elomax 450, 2 pcs

ELOMAX is supplied fully assembled and complete:

- Expansion tank*
- Shunt valve control
- Shunt actuator
- Circulation pump
- Outdoor temperature sensor
- Supply pipe sensor
- Filler valve
- Automatic vent
- Mixer valve
- Shut-off valve
- 2 safety valves

DEALER

Smartest home heating!



This is your new boiler-room boss

VB 010000 020225 Bild reserved för en befästning och monteringsfärdig. Typ: Utgåvan: Vårsk.



Elomax

250 & 450

Värmebaronen is Sweden's major electric heating company. Our reliable electric boilers have been thoroughly tested and have long service life.



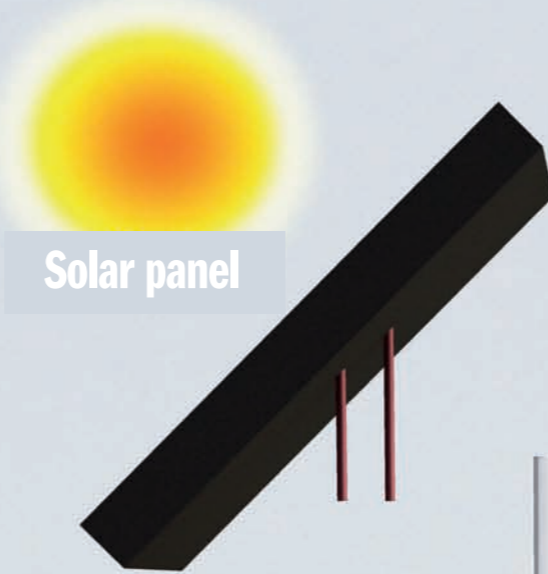
There are two Elomax models, the illustration shows and Elomax 250. This is rated at 13 kW electric power and has a generously-sized calorifier which can supply even the largest home. Its flexibility also raises the value of your home.

Elomax The brain in your heating system.

ELOMAX is designed to meet the future. It completely replaces an ordinary electric boiler and can be connected to a heat pump, solar panel and other heat sources. It gives you a smart unit which makes your heating really efficient and saves you more money. An Elomax ensures that you save electricity and money, and is the perfect partner for your heat pump. The unique control system ensures that supplementary electric heating is used as sparingly as possible. An Elomax eventually learns your heating habits and then makes the heat pump work as efficiently as possible. It only puts the electric heating on when it is absolutely necessary. This also allows the heat pump to work for a long time without stopping and starting, which gives it longer service life and lower operating costs.

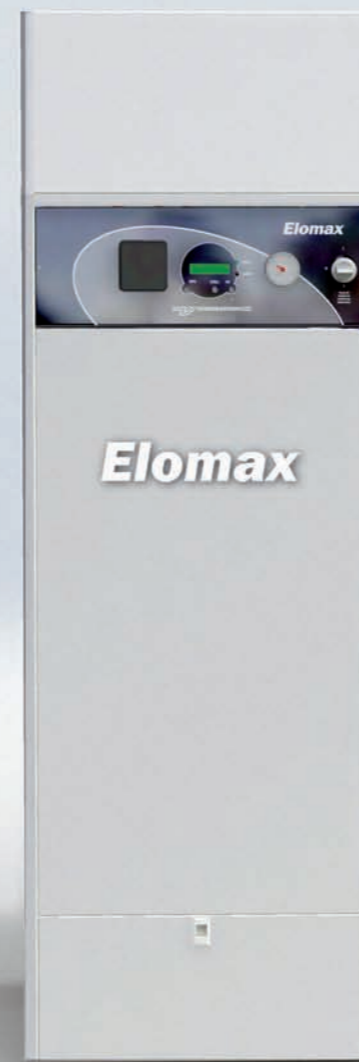
The smart control system allows you to connect any kind of heat source to your home. Using an Elomax, you can connect a **solar panel** when you want to, for example. Or use biofuel such as **wood** or **pellets** when it is really cold. Your Elomax can also be used as a free-standing electric boiler, of course.

**Smartest
home heater!**

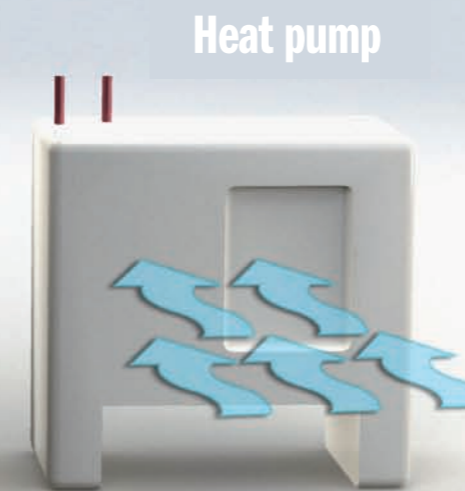


Solar panel

Unique control system for heat pumps and solar panels



Elomax



Heat pump

Elomax controls are designed to handle heat pumps and solar panels. The unit is easy to install, pipes can be connected from above, below or sideways. Thanks to its design, you can install an Elomax in the laundry room, scullery or boiler room.

How does it work?

The Elomax control system uses a number of sensors to calculate the heat needed by your home at any instant. The data collected by the sensors is used to decide what the boiler can handle in a certain period of time. In this way, you can say that the Elomax uses "temperature trend forecasts" in the house to control the heating in the most economical manner. This also means that connected units are operated in the smoothest and most efficient manner. Elomax is designed for protection against legionella bacteria, in accordance with Swedish National Board of Housing and Physical Planning regulations.

Heat pump

When a heat pump is connected to the automatic heating control in your Elomax, it will be controlled by the ambient temperature outside and in the heating system. Elomax will let the heat pump run as much as possible.

Sometimes, you might notice how the Elomax "trend control" operates, if the boiler temperature has fallen and the heat pump should normally start. Instead of this the heat pump will wait a bit longer, while the Elomax calculates that the heating and hot water requirement in the house can still be met with a wide margin. The result will be that the heat pump operates for long intervals, which is kinder for the pump - and more economical for you.

Solar panels

Solar panels are used to heat the hot water in the summer months, and to help heat the house in spring and autumn (solar panels can also produce heat in sunny winter days). Solar panels are always given priority. When the power of the solar panels is not enough, the heat pump will start up to support them. Then finally, the Elomax will start its built-in immersion heater to cover the energy requirement.

Lots of hot water and plenty of comfort

The Elomax has a generously-sized copper lined calorifier and is not sensitive to lime scale. This is extra important if you use solar panels, which produce high temperature in summer. The Elomax is delivered fully finished, please refer to the rear of the brochure. This cuts installation costs and it looks neat and tidy. The expansion tank etc. are not visible. All pipe connections are concealed. The pipe



The Elomax 450 has a generously-sized water volume and can manage larger solar panels/heat pumps than the Elomax 250.