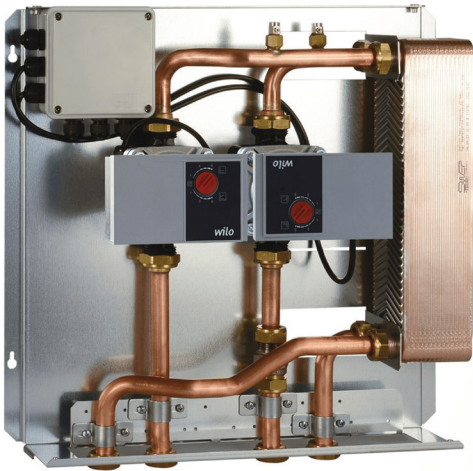


EasyStove



Easy connection of solid fuel with central heating

The **EasyStove** provides a great solution for connecting solid fuel stoves to modern central heating systems.

A flue thermostat detects when the stove is hot and activates the EasyStove. The EasyStove pumps start and its heat exchanger transfers heat from the stove into the central heating system.

When the stove cools down, the EasyStove's pumps are switched off.

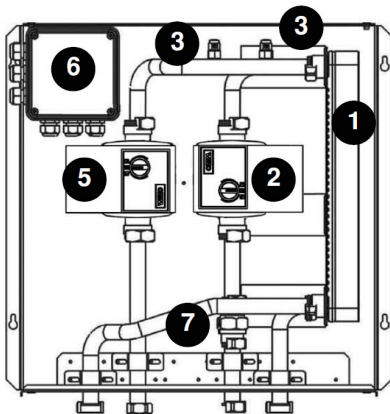
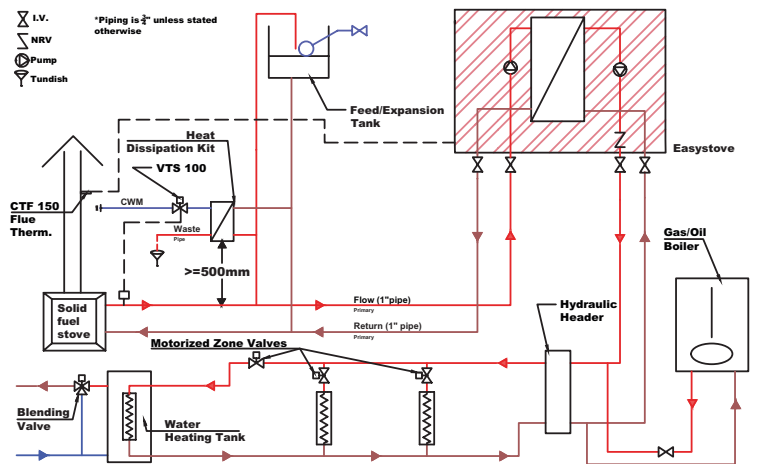
Features

- Suitable for stoves of up to 20kW (max 14kW output to water)
- In-built pumps for stove and CH circuits
- In-built air vents
- Non-return valve for CH circuit
- Integrated controls
- Optional cover available

Benefits

- Allows stove to contribute to central heating and/or domestic hot water production
- Gives the system designer a high degree of freedom
- Excellent time saver

Suggested System Layout



1	Heat Exchanger
2	System Pump
3	Air Vent
5	Stove Circuit Pump
6	In-built Controller
7	Non Return Valve

Key specifications

@ Nominal capacity (14KW)	Primary Stove Circuit	Secondary Heating Circuit
Flowrate L/h	800	700
Temperature °C IN/OUT	80/65	55/72
Without Cover H x W x D (mm)	425 x 448 x 141	
With Cover H x W x D (mm)	433 x 459 x 157	

Optional Heat Dissipation Kit Available

An easy, effective, and safe way of providing heat dissipation from solid fuel stoves in situations where there is no heat load, or where the electricity supply fails.



RVR Energy Technology Limited

Kenmare
Co. Kerry
V93 F386
Ireland

Contact us

Sales direct line: +353 (0)64 6689522
Web: www.rvr.ie Email: sales@rvr.ie