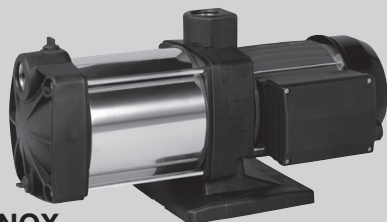




WATER • TECHNOLOGY



MULTI INOX



BOOSTERSILENT

- (GB)** INSTRUCTIONS MANUAL
- (FR)** MANUEL D'INSTRUCTIONS
- (IT)** MANUALE D'ISTRUZIONI
- (DE)** BETRIEBSANLEITUNG
- (ES)** MANUAL DE INSTRUCCIONES
- (NL)** INSTRUCTIEHANDLEIDING
- (FI)** OHJEKIRJA
- (PT)** MANUAL DE INSTRUÇÕES
- (SE)** BRUKSANVISNING
- (RU)** РУКОВОДСТВО ПО ЭКСПЛУАТАЦИИ
- (CZ)** INSTRUKČNÍ MANUÁL
- (SI)** PRIROČNIK Z NAVODILI
- (SK)** NÁVOD NA OBSLUHU
- (HR)** PRIRUČNIK S UPUTAMA
- (RS)** **(ME)** PRIRUČNIK SA UPUSTVIMA
- (MK)** ПРИРАЧНИК СО ИНСТРУКЦИИ
- (HU)** KEZELÉSI ÚTMUTATÓ

1. SAFETY MEASURES



Before starting the pump, read this instruction booklet carefully and keep it in a safe place for future reference

For safety reasons, the pump must not be used by anyone who has not read these instructions.

The appliance is not intended for use by persons (including children) with reduced physical, sensory or mental capabilities, or lack of experience and knowledge, unless they have been given supervision or instruction concerning use of the appliance by a person responsible for their safety. Children should be supervised to ensure that they do not play with the appliance.



The power cord must never be used to carry or move the pump. Always use the pump's handle.



When handling the pump, while it is connected to the electric power supply, you should avoid all contact with water.



Never remove the plug by pulling on the power cord.



Before taking any action on the pump, always remove the plug from the power socket.



If the power supply cord has been damaged, it must be replaced by the manufacturer or his authorized customer support service in order to avoid all risks.



Overload protection. The pump has a thermal overload safety device. In the event of any overheating of the motor, this device automatically switches off the pump. The cooling time is roughly 15 to 20 minutes, then the pump automatically comes on again. If the overload cut-out is tripped, it is essential to identify and deal with the cause of the overheating. See Troubleshooting.

2. USE OF THE VARIOUS TYPES OF PUMPS

2.1 Self priming multi-impeller surface pumps (MULTI INOX)




Available with 1, 3, 4 or 5 impellers. The range of products includes pumps with stainless steel casings as well as plastic casings.

- suitable for domestic water supplies and for small and medium gardens.
- Ideal for emptying small tanks. The pumps are made of chlorine resistant materials (normal concentration).
- Suitable for irrigation, drawing from water collection tanks


2.2 Boosters with integrated electronics (BOOSTERSILENT)

Characterised by their extremely silent running, and available with 3, 4 and 5 impellers.

- Including an electronic safety device to prevent the dry-running of the pump.
- Ideal for the irrigation of gardens and grounds, and domestic water supplies.
- Characterised by the constant pressure and flow-rate.


-  The temperature of the fluid being pumped must never exceed 35° C.
-  The pump must not be used to pump salt water, sewage, flammable, corrosive or explosive liquids (e.g. petroleum oil, petrol, and thinners), grease, oils or foodstuffs.
-  Comply with the rules and regulations of the local water authority when using the pump for the supply of domestic water.

3. STARTING THE PUMP

-  Given the different provisions applicable to the safety of electric systems in different countries, make sure that the pump system, as concerns its intended use, is in accordance with current legislation.

-  Before starting the pump, make sure that:

- the voltage and frequency specified on the pump's nameplate coincide with those of the available power supply;
- there are no signs of damage to the pump or its power cord;
- the electric connection is made in a dry place, protected against any risk of flooding;
- the electric system is complete with a residual current circuit-breaker ($I_{\Delta n} \leq 30 \text{ mA}$) and an efficient earthing connection;
- Any extension cords must comply with the requirements for electric safety.

-  Fill the pump casing and suction hose with clean water before starting the pump for the first time. If the pump is installed above the water level, filling must be performed slowly until the water overflows; wait a few seconds to make sure that all the air has escaped and top up until the level has stabilised.

If the pump is installed below the water level (below head), bleed the air from the pump casing by opening the filler cap. The pump will fill with water independently.

Plug the pump into the socket, start the pump and wait for the water to exit. If water has not exited within 2-3 minutes from when the pump was switched on, turn the pump off and repeat the filling operation again.

Attaching the suction hose

- Fit the suction hose from the water source to the pump making sure that the pump is above the water level. Do not position the suction hose above the level of the pump (to avoid air bubbles forming in the suction hose).
- The suction hose should be mounted in such a way that it does not create any mechanical stress on the pump.
- The foot valve should be placed at least 30 cm below the minimum water level.
- The pump will draw water only when the suction hose is completely filled with water.
- The suction hose and the pump's suction inlet should be of the same diameter.

Attaching the delivery hose

- To get the best performance from the pump, it is recommended that the diameter of the delivery hose is at least 1"
- During the self-priming phase, all taps, valves, etc. on the delivery hose must be fully open in order to allow the air inside the hose to escape.

Before plugging in and starting the pump for the first time, it is necessary that the suction hose and the pump are completely filled with water in order for suction to take place. For use in wells or when the water level is lower than the pump, a suction hose must be used that is equipped with the foot valve. This will allow the suction hose to remain filled with water after the first time that it is filled and will prevent the emptying of the hose when the pump shuts off automatically, avoiding any problems when restarting.

► **Booster with integrated electronics**

Installation



The pump's inlet pressure should not exceed 2 Bars.



The maximum suction depth should be less than 8m.



The device will not pump liquid if the tap is more than 15m the level of the pump.



Due to the non-return valve in this model, the suction hose cannot be filled through the filler cap on the pump.

Using of the pump

Plug the electric cable into the socket. The pump will automatically begin to run.

If the suction phase is not activated within 120 seconds, the pump will shut-off automatically. The pump will then try 2 more attempts to self prime for 120 seconds each.

The electric pump is equipped with an integrated electronic device that allows the unit to automatically intervene in the following ways:

• **Automatic operation of the pump**

The pump automatically starts when a tap is opened and shuts-off approximately 10 seconds after it is closed.

• **Dry- Run Protection**

If the pump senses that it is not drawing any water, it will automatically switch-off after approx. 45 seconds. The red "Alarm" LED on the electronic display will begin to flash. After having restored the flow of water to the pump, press the RESET pad to restart the pump.

If the alarm persists, or rather the user does not re-establish the flow of water and reset the pump, the automatic reset will attempt to restart the pump after 1 hour, 5 hours and 20 hours, and then once every 24 hours. The electronic display continues to signal the lack of water from the first intervention of the dry run protection up until the pump starts to operate correctly: flashing red LED with one flash and one pause. After having re-established the flow of water, press the RESET button to restart the pump.

• **Electronic display signals**

Green Led (Power) on.

The pump is connected to the main power and is ready to supply water (as soon as a tap is opened).

Yellow Led (Pump on) on.

The pump is supplying water.

Red Led (Alarm) with 1 flash cycles.

The pump is not functioning due to lack of water on the suction side: the dry running protection program is activated.

4. RECOMMENDATIONS

To ensure the proper operation of the pump, it is important to comply with the following recommendations:



The pump should not operate with the delivery tap completely closed (except for electronically controlled pumps).



The pump must never be allowed to run dry.

- The diameter of the suction and delivery hoses must not be less than the relative inlet or outlet (25 mm) of the pump. A hose with a greater diameter should ideally be fitted to the suction inlet when the suction height exceeds 4 meters. Do not use metal connectors on the pump's threads.
- Connect the suction hose including a foot valve avoiding counterslopes, traps, goosenecks and kinks in the hose.
- Place the pump in a level, stable and dry place, and away from inflammable or explosive substances. Never expose the pump to the rain or direct jets of water.
- Make sure that the mains power connections are not subjectable to flooding, avoid that the pump is exposed to direct jets of water and do not immerse the pump in water.

MAINTENANCE AND CLEANING

It is absolutely essential to prevent any risk of the pump freezing. In the event of freezing temperatures, remove the pump from the liquid, empty it and keep it in a place where it cannot freeze.

The pump must be disconnected from the mains before performing any cleaning operation.

The pump is maintenance free.

5. TROUBLESHOOTING



Before taking any troubleshooting action, disconnect the pump from the power supply.

If there is any damage to the power cord or pump, any necessary repairs or replacements must be handled by the manufacturer or his authorized customer support service, or by an equally-qualified party, in order to prevent all risks.

Multi-impeller self priming Surface pumps and Boosters with tank

Fault	Cause	Solution
The pump does not turn on	1) no power. 2) shaft blocked	1) check if power is supplied to the socket and that the plug is correctly inserted. 2) remove the plug from the power socket and insert a screwdriver into the notch on the shaft (from the cooling fan side) and unblock it by turning the screwdriver.
The pump turns but does not deliver water	1) the air inside the pump has not been completely bled. Pump casing without water. 2) entry of air from the suction pipe. 3) - the suction valve is not submerged in water - suction valve blocked - the maximum suction depth has been exceeded	1) stop the pump, unscrew the delivery pipe, shake the pump and suction hose to remove any air bubbles. Top up with water, connect the hose ensuring it is correctly sealed and start the pump again. 2) check that the joints of the suction hose have been performed correctly. Make sure there are no counterslopes, traps, goosenecks or constriction on the suction pipe and that the foot valve is not blocked. 3) - place the suction valve in water - clean the foot valve - clean the suction basket - check the suction depth.
The pump stops due to overheating caused by the opening of the overheating thermal protection	1) The power supply does not conform to that on the rating plate of the motor (voltage too high or too low). 2) A solid object has blocked the impeller. 3) The pump has been operating with water that is too hot. 4) The pump ran dry or ran with the delivery tap closed for more than 10 minutes.	1)-4) remove the plug, remove the cause of the overheating, wait for the motor to cool and start it again.

Booster with integrated electronics

Based on the combinations of LEDs, the cause of the pump malfunction can normally be identified.

Fault	LED	Cause	Solution
The pump does not work	Power is off Pump on is off Alarm is off	No power Faulty card	Check that the mains power supply is sufficient. Check the electrical line and the connections. Contact an authorised service centre.
	Power is on Pump on is off Alarm is off	The delivery hose is blocked Incorrect installation (+ 15 m)	Check the hydraulic system
	Power is on Pump on is on Alarm is on	Faulty card	Contact an authorised service centre
	Power is on Pump on is off Alarm is flashing	Lack of suction water no more than 26 hours ago	Check that the suction hose has been fitted correctly
		Impeller blocked (thermal cut-out tripped)	Clean/free the pump
	Power is on Pump on is off Alarm is on	Lack of water for more than 26 hours	Check that the suction hose has been fitted correctly.
Impeller blocked (thermal cut-out tripped)		Clean the pump	
Insufficient delivery		Excessive suction depth	Check the suction depth
		Foot valve blocked	Clean the foot valve
		Performance of the pump is reduced due to foreign objects	Clean the pump
The pump continuously stops and starts.		There are leaks in the system The pump has sucked in foreign materials The non-return valve is leaking	Clean the pump
		The water level drops rapidly below 8m	Position the foot valve deeper (not below 8 meters)

6. DISPOSAL

This product or its parts must be disposed of in accordance with the laws regarding the environment; Use the local, public or private, refuse collection services.

7. GUARANTEE

Any material or manufacturing defects will be corrected during the guarantee period established by current law in the country where the product is purchased. It is up to the manufacturer to decide whether to repair or replace any faulty parts.

The manufacturer's guarantee covers all substantial defects attributable to manufacturing or material defects, providing the product has been used correctly and in compliance with the instructions.

The guarantee becomes null and void in the event of the following:

- unauthorized attempts to repair the appliance;
- unauthorized technical changes to the appliance;
- use of non-original spare parts;
- manhandling;
- inappropriate use, e.g. for industrial purposes.

The guarantee does not cover:

- parts liable to rapid wear and tear.

For any action under guarantee, contact an authorized customer support service, presenting your receipt for the purchase of the product.

The manufacturer accepts no liability for any inaccuracies in the present booklet due to printing or copying errors. The manufacturer reserves the right to make any changes to the product he deems necessary or useful, without affecting its essential features.

DAB PUMPS LTD.

Units 4 & 5, Stortford Hall Industrial Park,
Dunmow Road, Bishop's Stortford, Herts
CM23 5GZ - UK
salesuk@dwgroup.com
Tel.: +44 1279 652 776
Fax: +44 1279 657 727

DAB PUMPS IBERICA S.L.

Avenida de Castilla nr.1 Local 14
28830 - San Fernando De Henares - Madrid
Spain
info.spain@dwgroup.com
Ph.: +34 91 6569545
Fax: +34 91 6569676

DAB PUMPS B.V.

Brusselstraat 150
B-1702 Groot-Bijgaarden - Belgium
info.belgium@dwgroup.com
Tel.: +32 2 4668353
Fax: +32 2 4669218

DAB PUMPS B.V.

Albert Einsteinweg, 4
5151 DL Drunen - Nederland
info.netherlands@dwgroup.com
Tel.: +31 416 387280
Fax: +31 416 387299

PUMPS AMERICA, INC. DAB PUMPS DIVISION

3226 Benchmark Drive
Ladson, SC 29456 USA
info.usa@dwgroup.com
Ph. : 1-843-824-6332
Toll Free: 1-866-896-4DAB (4322)
Fax : 1-843-797-3366

DWT South Africa

Podium at Menlyn, 3rd Floor, Unit 3001b,
43 Ingersol Road, C/O Lois and Atterbury,
Menlyn, Pretoria, 0181 South-Africa
info.sa@dwgroup.com
Tel +27 12 361 3997
Fax +27 12 361 3137

OOO DWT GROUP

100 bldg. 3 Dmitrovskoe highway,
127247 Moscow - Russia
info.russia@dwgroup.com
Tel.: +7 495 739 52 50
Fax: +7 495 485-3618

DAB PUMPEN DEUTSCHLAND GmbH

Tackweg 11
D - 47918 Tönisvorst - Germany
info.germany@dwgroup.com
Tel.: +49 2151 82136-0
Fax: +49 2151 82136-36

DAB PUMPS POLAND SP. Z.O.O.

Mokotow Marynarska
Ul. Postepu 15c - 3rd Floor
02-676 Warsaw - POLAND
Tel. +48 223 81 6085

DAB UKRAINE Representative Office

Regus Horizon Park
4M. Hrinchenka St, suit 147
03680 Kiev. UKRAINE
Tel. +38 044 391 59 43

DAB PUMPS CHINA

No.40 Kaituo Road, Qingdao Economic &
Technological Development Zone
Qingdao City, Shandong Province, China
PC: 266500
info.china@dwgroup.com
Tel.: +8653286812030-6270
Fax: +8653286812210

DAB PRODUCTION HUNGARY KFT.

H-8800
NAGYKANIZSA, Buda Ernó u.5
HUNGARY
Tel. +36.93501700

**DAB PUMPS S.p.A.**

Via M. Polo, 14 - 35035 Mestrino (PD) - Italy
Tel. +39 049 5125000 - Fax +39 049 5125950
www.dabpumps.com

12/14 cod.60145028