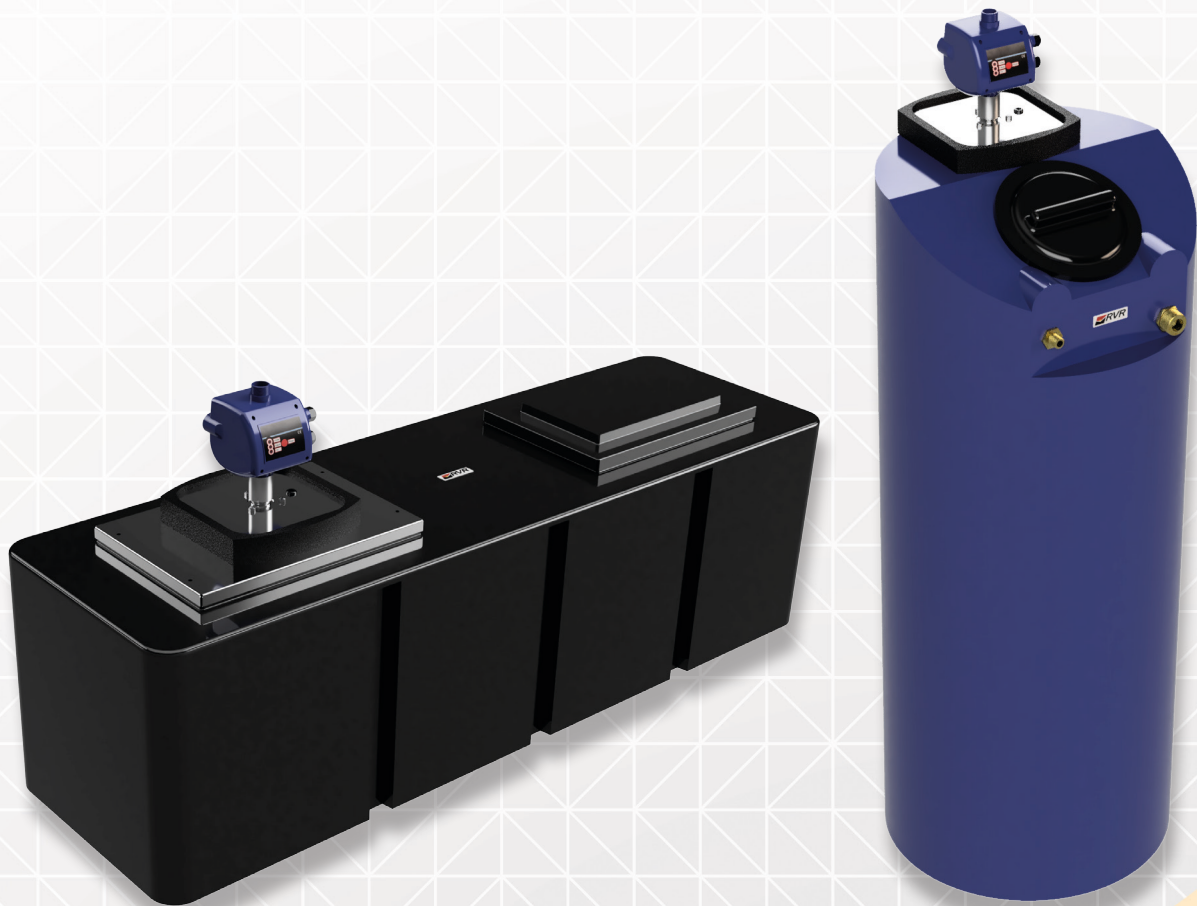




Attic 220 / Closet 300 PS

Water Pressurisation Units for Homes and Businesses

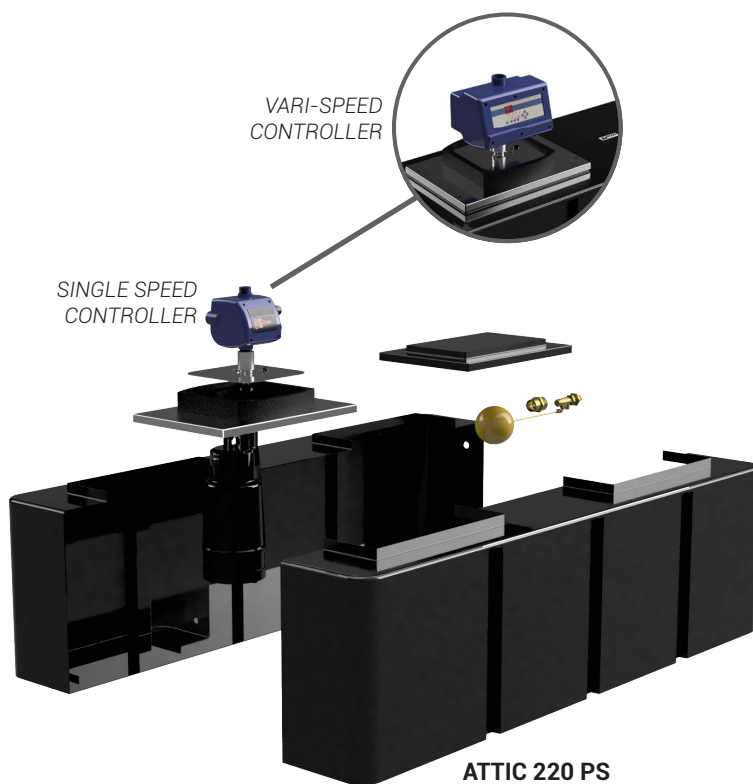


Attic 220 / Closet 300 PS Units

The RVR Attic 220 PS and Closet 300 PS are pre-packaged water pressurisation units. They are ideal for providing a pressurised water supply in a home or business.

Each unit consists of:

- **A MULTI-IMPELLER SUBMERSIBLE PUMP** which is suitable for use in applications with up to 40 start/stop cycles per hour. The pump is fitted with a continuous duty asynchronous motor and thermal overload protection.
- **A SINGLE SPEED PRESSURE CONTROLLER** which controls the starting and stopping of the pump. It must be installed in a vertical position with the water inlet at the bottom and the water outlet at the top. It starts the pump when the outlet pressure falls below 1.2 bar and stops when the flow stops. A **VARI-SPEED VERSION** is also available.
- **ATTIC TANK / CLOSET TANK INCLUDING FLOAT VALVE AND OVERFLOW.**



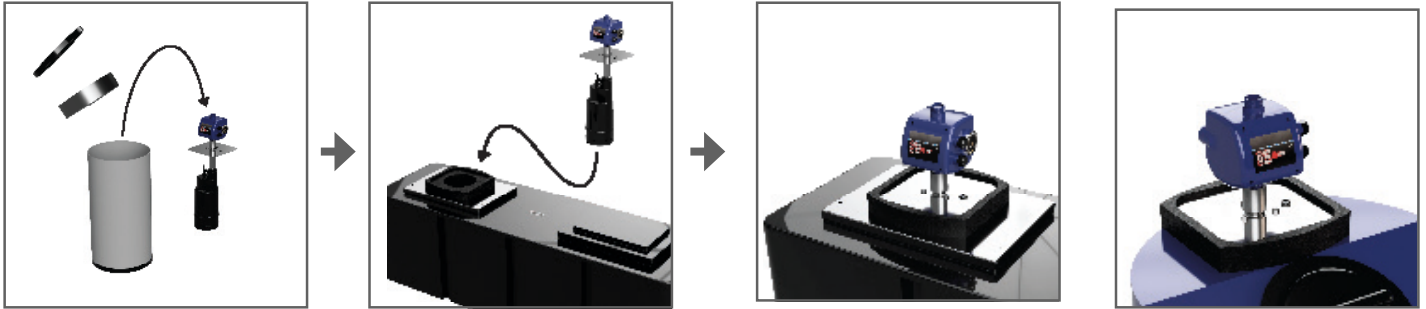
Features

- Complete pre-packaged water pressurisation solution
- Simple installation - simply connect power and water
- Low noise multi-impeller submersible pump
- Available with single speed or vari-speed electronic controller
- Auto stop and auto reset functions provide dry-run protection
- Precisely sized pump with max pressure of 3.5 bar means no pressure reducing valve needed
- Built in float valve and overflow
- Built in inspection hatch

MADE IN IRELAND

Rapid On-site Assembly

The Attic 220 PS / Closet 300 PS are quick and easy to assemble on-site. Simply remove the pump assembly from the packaging, insert the pump assembly into the tank via the top mounting hole, and ensure that the top plate is sitting correctly within the vibration isolating insulation.



Easy to use electronic controllers

The Attic 220 PS / Closet 300 PS come with an easy to use single speed controller as standard. A vari-speed option is also available.



Single speed controller

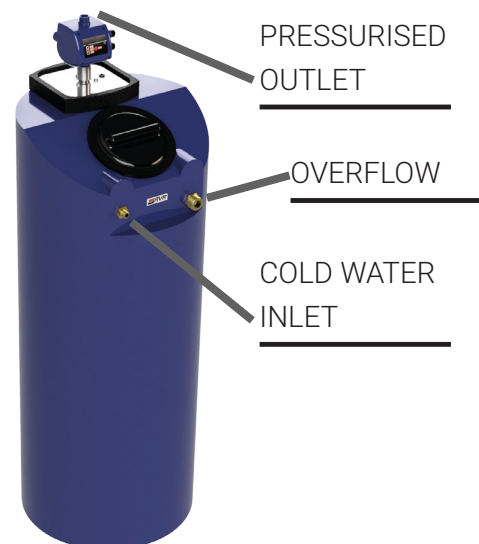
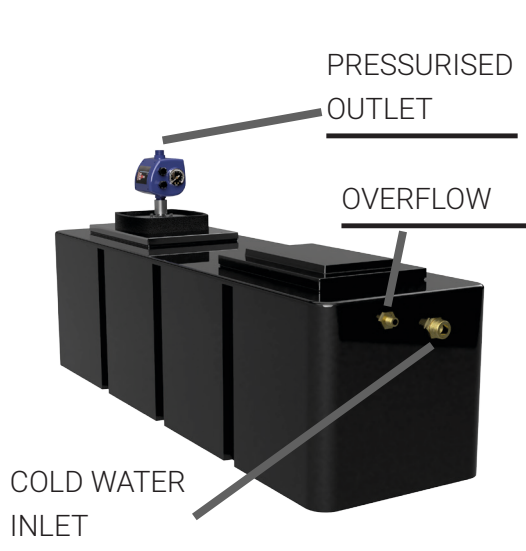
- Simple to use with clear visual indication of operation and faults
- Only has a single button - reset
- Starts the pump when the outlet pressure falls below 1.2 bar
- Stops when the flow stops.



Vari-speed controller

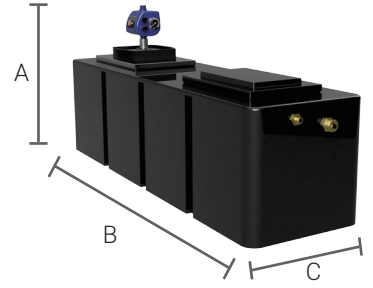
- Advanced variable speed controller
- Will vary the pump speed to achieve a desired set pressure
- LCD with menu buttons allows powerful customisation
- Maintains complete history of operating cycles and faults

Connections



Dimensions and Capacities

Attic 220 PS	Height mm (A)	Length mm (B)	Depth mm (C)	Capacity litres
Excluding pump / controller	480	1640	470	220
With Single Speed Controller	720			
With Vari-speed controller	750			

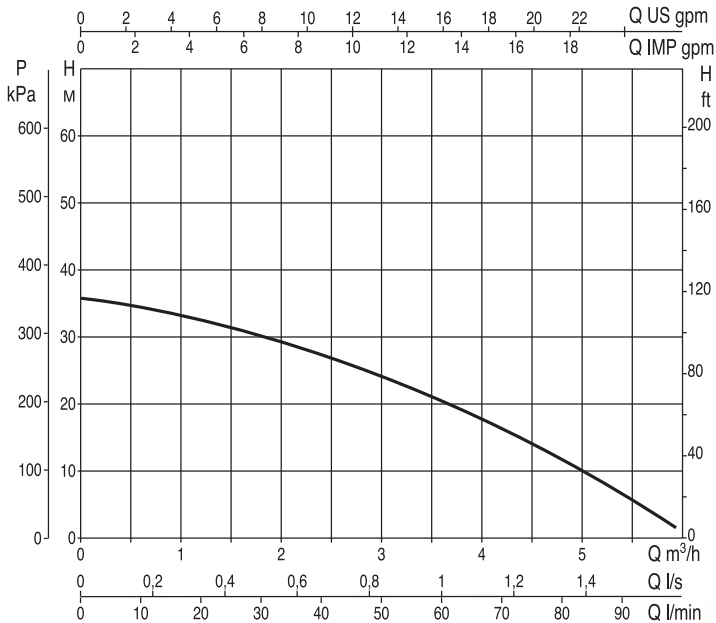


Closet 300 PS	Height mm (A)	Diameter mm (B)	Capacity litres
Excluding pump / controller	1475	560	300
With Single Speed Controller	1625		
With Vari-speed controller	1660		



Performance

Flowrate (l/min)	10	20	30	40	50	60	70	80
Pressure (bar)	3.4	3.2	3.0	2.7	2.5	2.0	1.6	1.2



Based on kinematic viscosity values = 1 mm²/sec and density equivalent to 1000 kg/m³. Curve tolerance according to ISO 9906.

RVR Energy Technology Limited

Kenmare
Co. Kerry
V93 F386
Ireland

Sales direct line: +353 (0)64 6689522 Email: info@rvr.ie

