

W - WR - WD 10

Gas-fired convective heaters air-tight units with forced draft



mod. W 10



mod. WR 10



mod. WD 10



THERMAL COMFORT



SPECIAL COMBUSTION CIRCUIT



PATENTED BURNER



MADE IN ITALY



SIMPLE INSTALLATION

Technical and construction features

The unit's cover is made of epoxy coated steel and thus long life time is guaranteed.

In the ducted versions WD the cover is made of zincplated metal sheet and equipped with removable panel for inspection.

On the air outlet side (versions W/WR) is fixed an aluminium varnished grate with adjustable flaps for a better distribution of the air flow.

The flaps are mounted on heat-resistant plastic supports and rotate around silicon guides.

In the wall mounted version W the control panel is fixed beside the air outlet grate, accessible through a small door, which helps to avoid improper use when the unit is installed in public areas.

In the ducted versions WD the outlet grate is replaced by a special frame for duct connection, as well as for the air intake.

The air intake side, in the W and WR versions, can hold a synthetic regenerable filter mounted on easily removable metal frame.

Inside the unit are placed:

heat-exchanger and gas burner.

This module is made of stainless steel and the design is based on a technical patent.

The combustion chamber holds the gas burner and the heat-exchanger is welded to it.

The heat-exchanger consists of two high efficiency finned tubes.

A centrifugal fan for exhaust ejection is fixed ahead the exchanger.

the air blower, which consists of 2 centrifugal fans running high flow rate at low noise level.

The fan's rpm can be adjusted by means of the control panel.

The fans are mounted on a zinc-plated steel support.

The control box, which includes:

- burner control device with flame ionisation detector
- gas solenoid valve with double shutter and pressure regulator
- differential pressure switch for exhaust ejecting detection
- fan thermostat
- safety thermostat



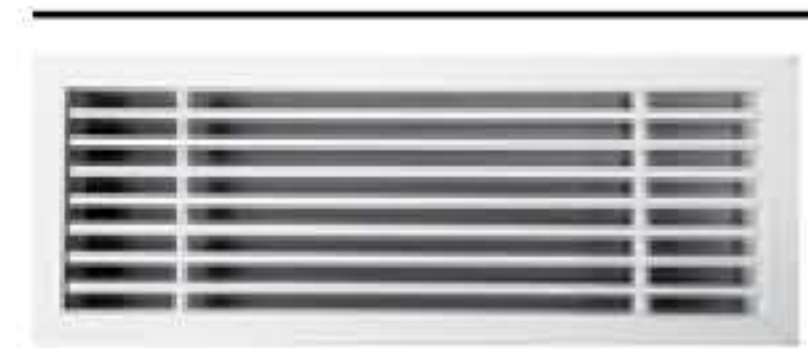

The control panel (remote for WR and WD), which allows of setting the room temperature by means of a sensor, selecting summer or winter mode, lighting working mode and failures, selecting the fan speed.

The supply includes:

- kit for switching to LPG
- air intake/exhaust duct
- exhaust flue end
- gas valve

Model	Heat Input kW	Heat Output kW	Code
W 10 elettronico a parete	10,50	9,24	35250000P
WR 10 elettronico a soffitto	10,50	9,24	35250000S
WD 10 elettronico canalizzabile	10,50	9,24	35250000D

Accessoires RADIATORI A GAS W - WR - WD 10

	Pipes and elbow 90° Ø 60	Pipe m 0,5 Pipe m 1 Bend 90°	37500045 37500050 37800020
	flexible insulated PVC duct - 10 m package Ø 200		37900001
	door-bottom passage grate cm 40x15		37900015
	Week thermostat with sms card		36205222

W - WR - WD 10

Gas-fired convective heaters air-tight units with forced draft

Accessoires RADIATORI A GAS W - WR - WD 10

Code



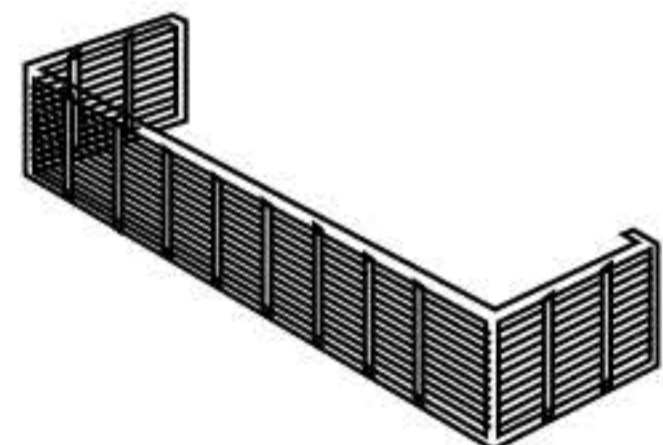
ducted delivery plenum
for flexible pipes

37060904



flexible pipe/outlet grate coupling plenum
cm 40x20 Ø 200

37900019



Painted metal-sheet foot
for W-WR connection cover

37065000



10 clamps Ø 60 - 325

37900017



air delivery grate with adjustable flaps
and damper cm 40x20

37900021



pipe coupling
pipe Ø 200

37900051

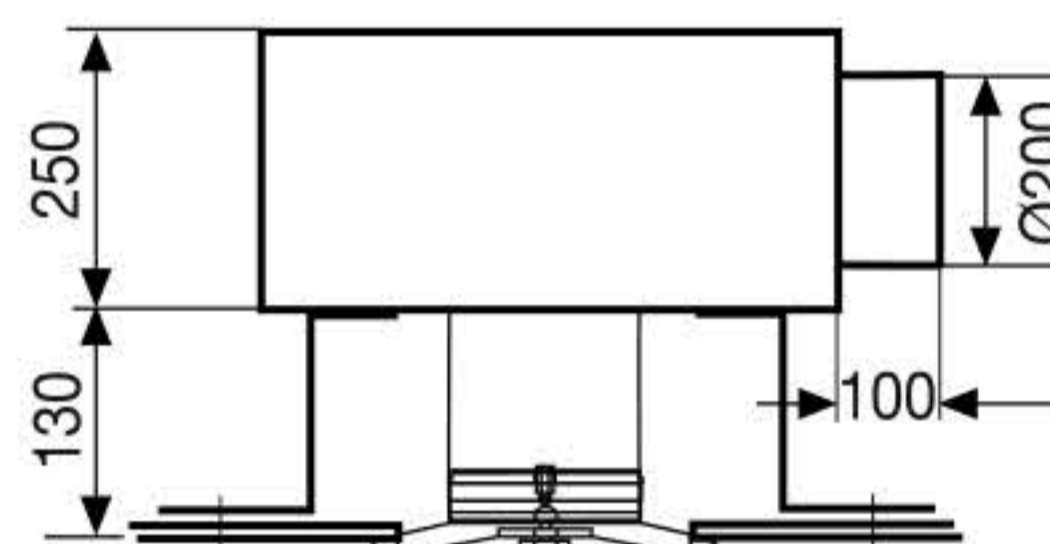


Ø 200 135° Y branch

37900010



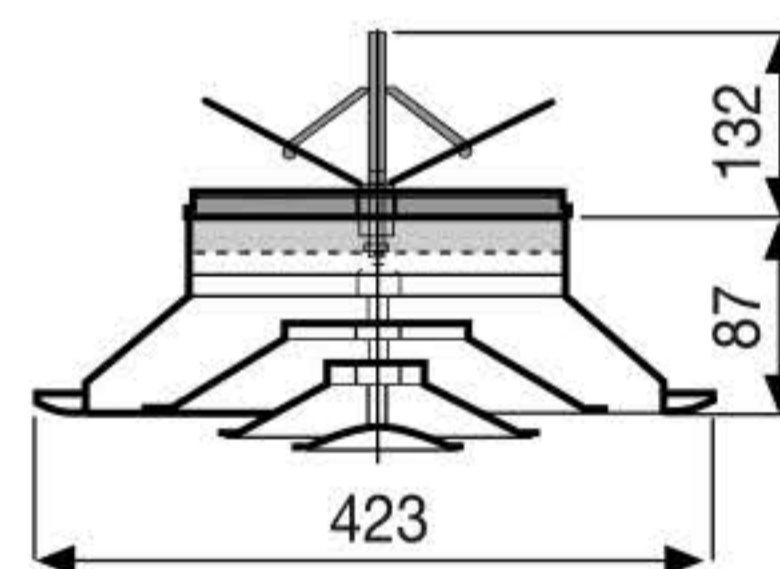
flexible duct/circular
diffuser coupling plenum



37900031



circular cone diffusers
with adjustable shutter Ø 200



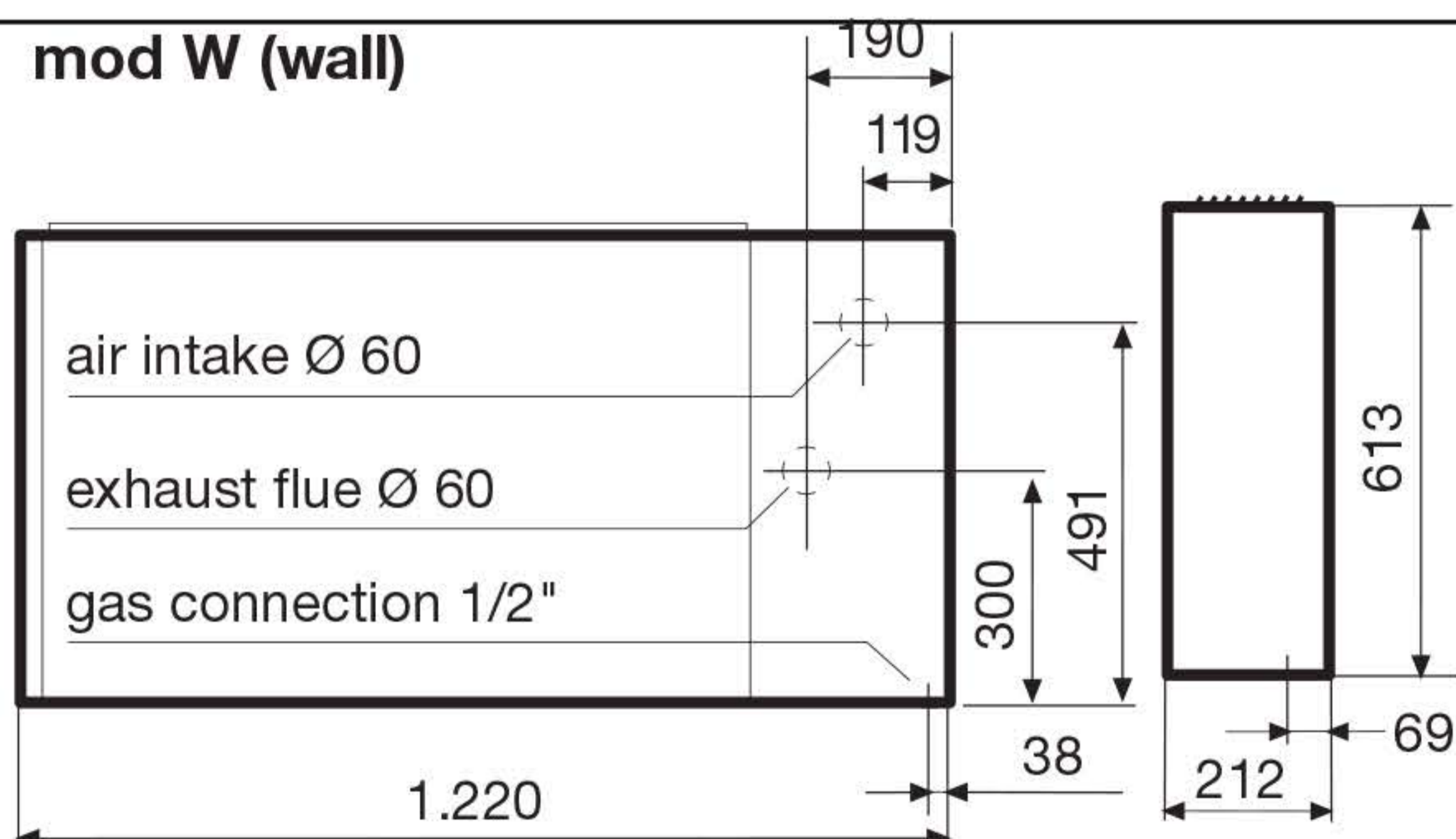
**Diffuser
Shutter**

37900027

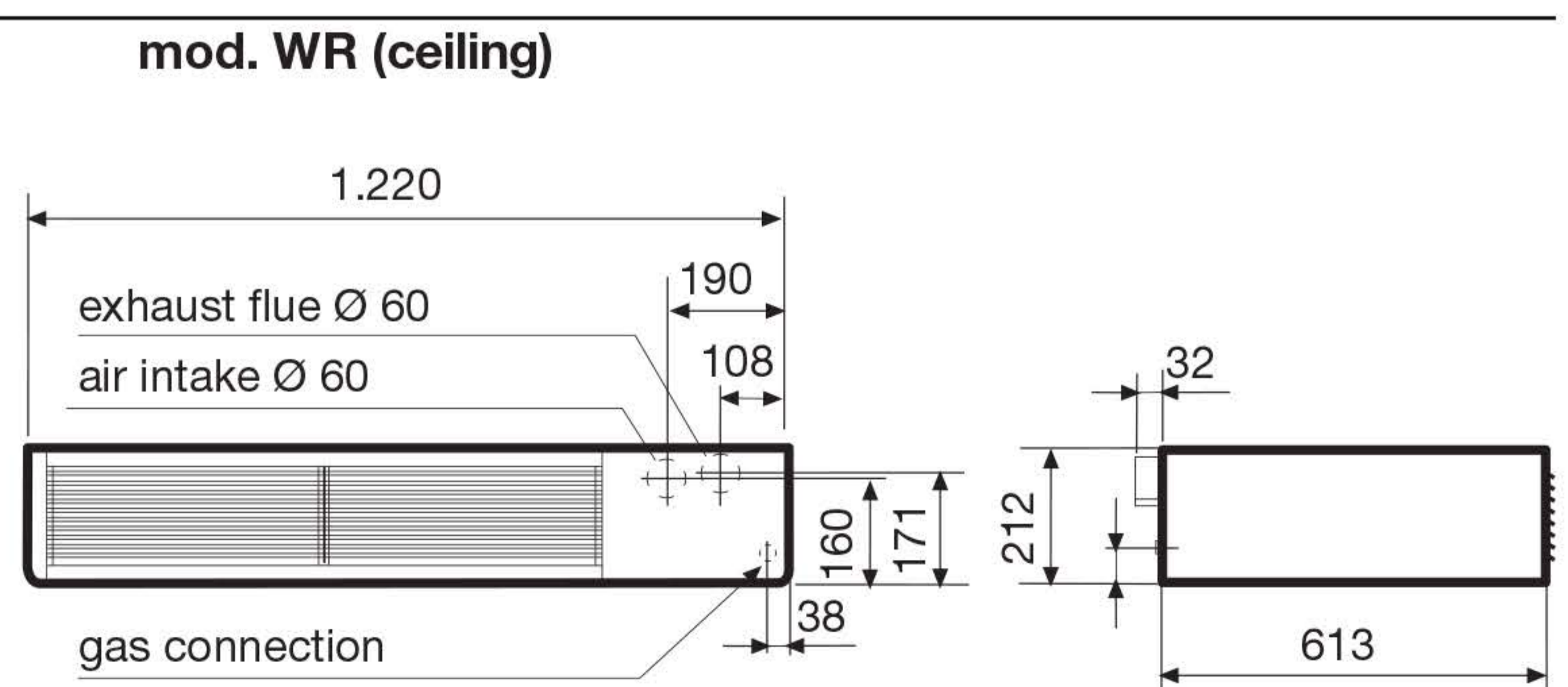
37900029

Dimensions W - WR - WD 10

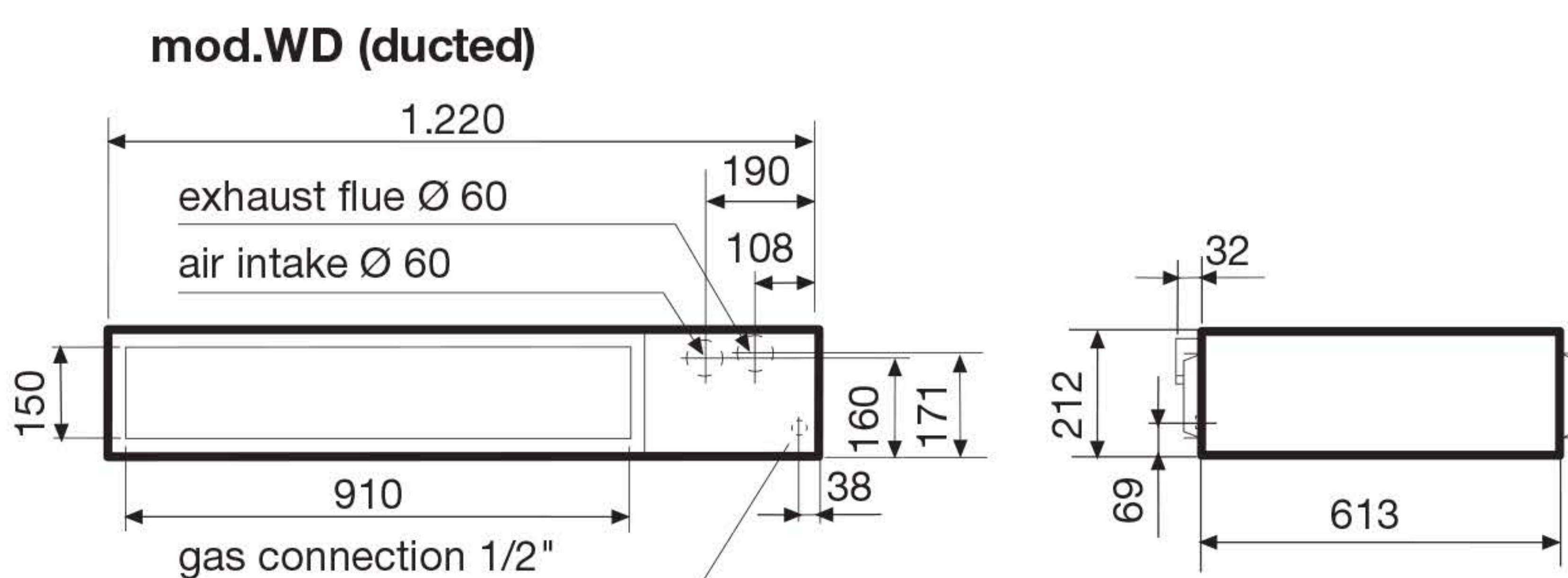
mod W (wall)



mod. WR (ceiling)

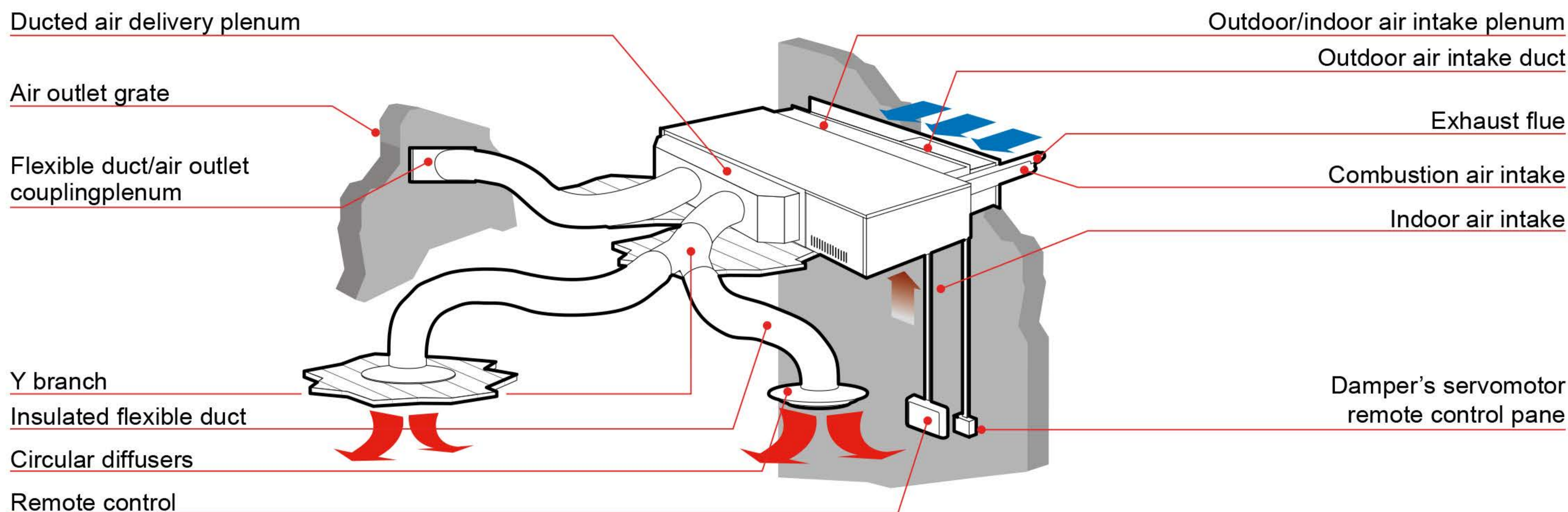


mod.WD (ducted)



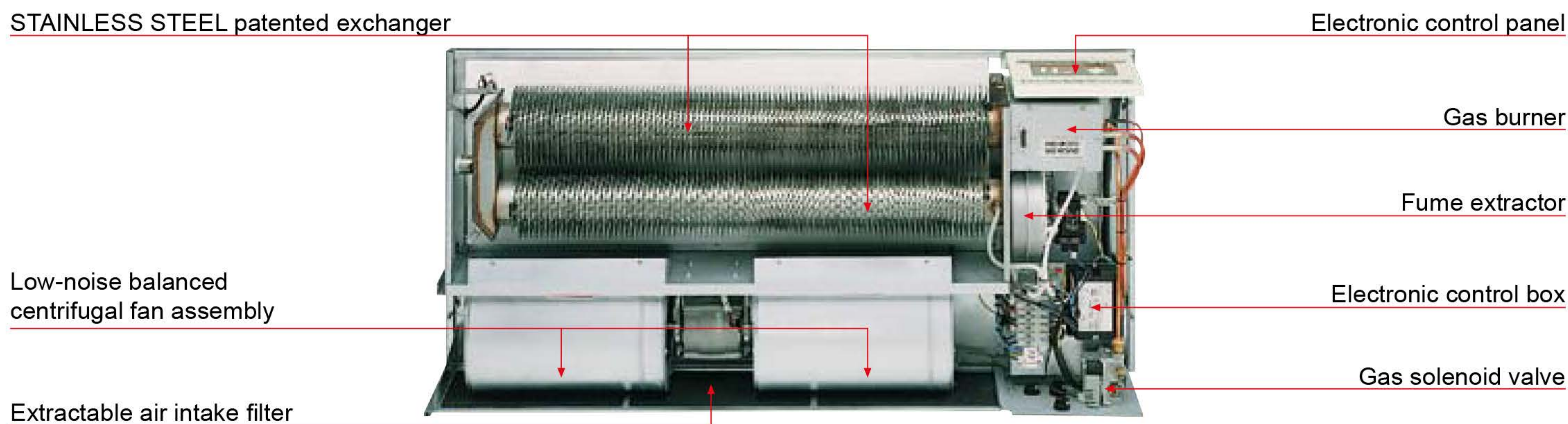
W - WR - WD 10

Gas-fired convective heaters air-tight units with forced draft



For all versions the air intake and exhaust ducts are included in the delivery, suitable for wall thickness up to 40 cm. Ducts can be extended up to maximum 3 m each but each 90° elbow reduces the maximum extension of 50 cm. The splitted air intake and exhaust ducts allow several different plant configuration.

STAINLESS STEEL patented exchanger



Technical datasheet W-WR-WD 10

DESCRIPTION	U.M.	W - WR 10	WD 10
Gas	kW		9,24
flow rate	<i>Metano G20</i>	m ³ /h	1,11
(15 °C-1.013 mbar)	<i>Butano G30</i>	kg/h	0,83
Gas pressure	<i>Propano G31</i>	kg/h	0,81
at burner	<i>G20 p 20 mbar</i>	mbar	12,0
(15 °C-1.013 mbar)	<i>G30 p 28-30 mbar</i>	mbar	27,0 - 29,0
Gas nozzle	<i>G31 p 37 mbar</i>	mbar	36,0
diameter	<i>G20</i>	mm/100	280
Air blower	<i>G30/G31</i>	mm/100	170
flow rate	<i>Velocità min</i>	m ³ /h	850
	<i>Velocità max</i>	m ³ /h	1040
Gas inlet diameter	"		G 1/2
Exhaust outlet/Air inlet diameter	mm		60
Fuse	A		2
Power supply			230V/1/50Hz
Power input	W	180	190
Noise level at 3 m	<i>Velocità min</i>	dB(A)	43,0
	<i>Velocità max</i>	dB(A)	45,5
Delivery static pressure	Pa	-	40
Net weight	kg	58	56