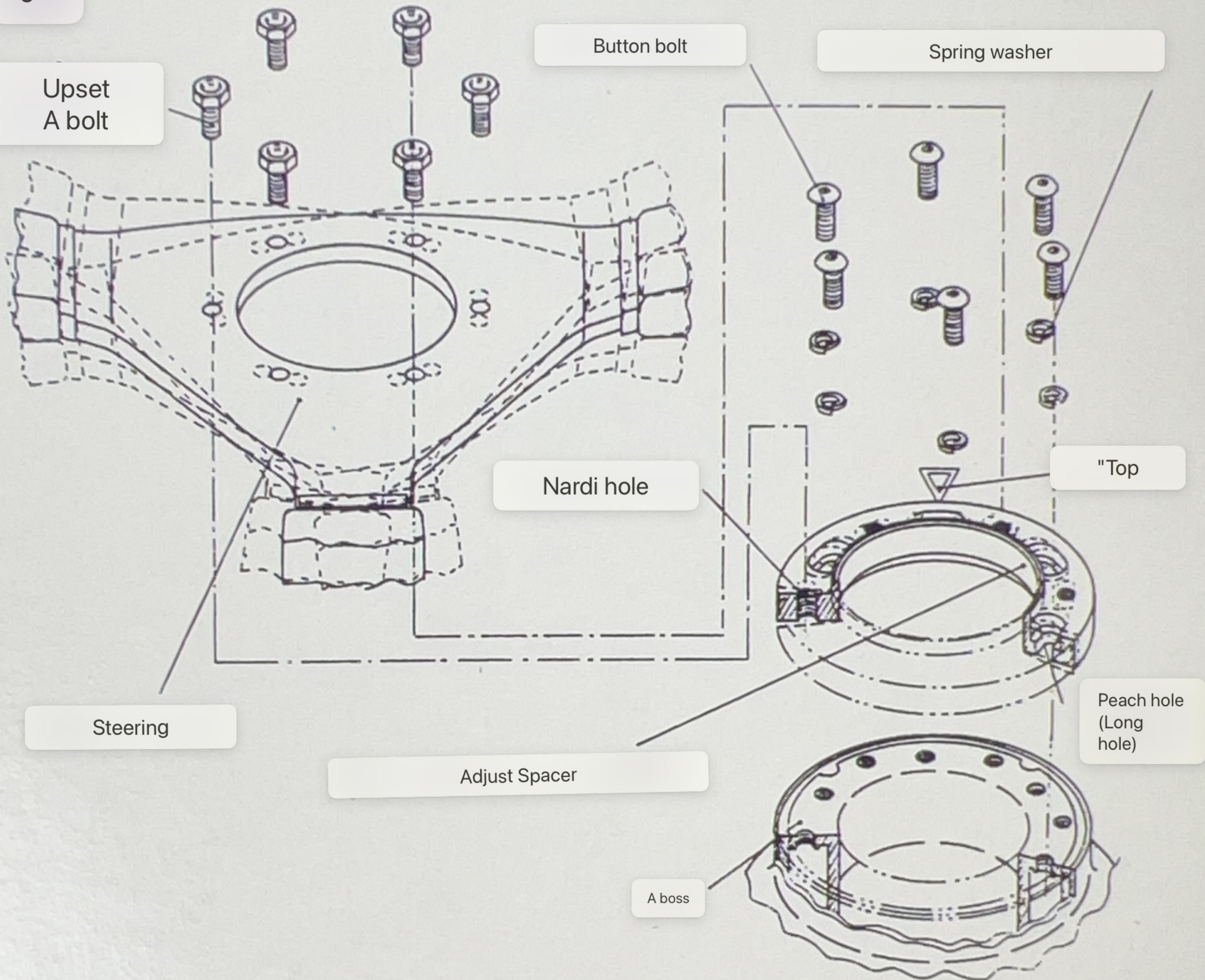


9  
36  
0

## ADJUST SPACER (Nardi type)



If you replace the genuine steering with a commercial steering wheel, if the steering direction does not straighten when it goes straight, please check the actual top position and remove the steering wheel. Next, adjust the center of the peach hole (long hole) of the adjust spacer to match the actual top position, and the button bolt  
Through the spring washer,

ADJUST SPACER  
AS02 Nardi type



4964334032631

Please fix it firmly with a peach hole (long hole).  
(For the position of the top of the boss,  
the angle  
It can be adjusted within 9.)  
After that, please install the steering wheel.  
(Note: It can not be used except for the shared boss.)

Daikei Sangyo Co., Ltd.

Parts bag: PE  
1-20-53 Minami, Wako City, Saitama Prefecture  
351-0104  
TEL048-463-1627 FAX048-466-3047