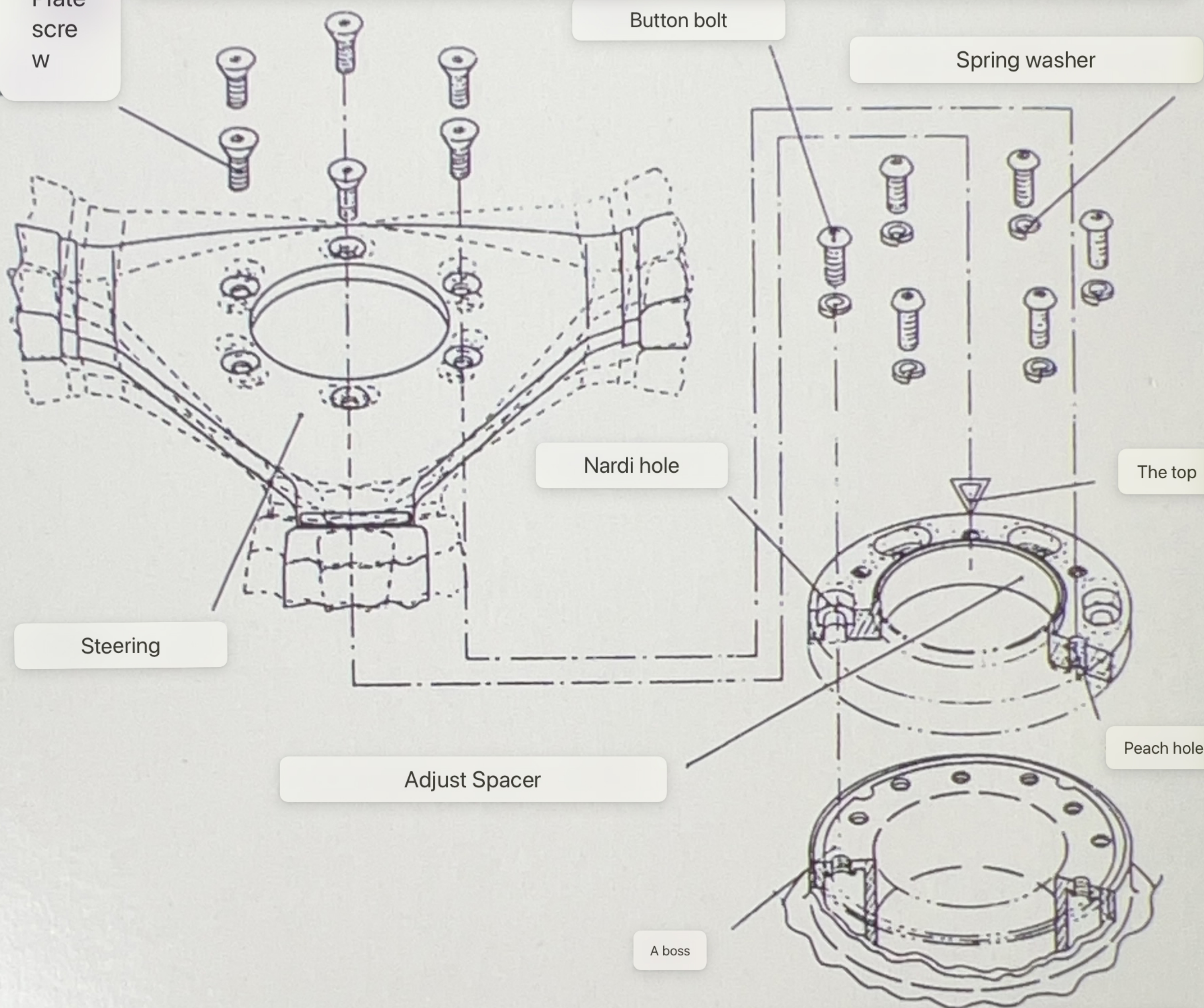


9
360
Plate
scre
w

ADJUST SPACER (Momo type)



If you replace the genuine steering with a commercially available steering, if the steering direction does not straighten when going straight, check the actual top position and remove the steering wheel.

It's in order to fit that, and the button bolt and spring
Through the washer, with a Nardi hole

ADJUST SPACER
AS01 Momotype



4964334032617

Please fix it firmly.
(For the position of the top of the boss, the angle
It can be adjusted within 9.)
After that, please install the steering wheel.
(Note: Except for shared bosses, use
I can't use it.)

Daikei Sangyo Co., Ltd.

Outer case: PVC
Parts bag: PE
1-20-53 Minami, Wako City, Saitama Prefecture
351-0104
TEL048-463-1627 FAX048-466-3047