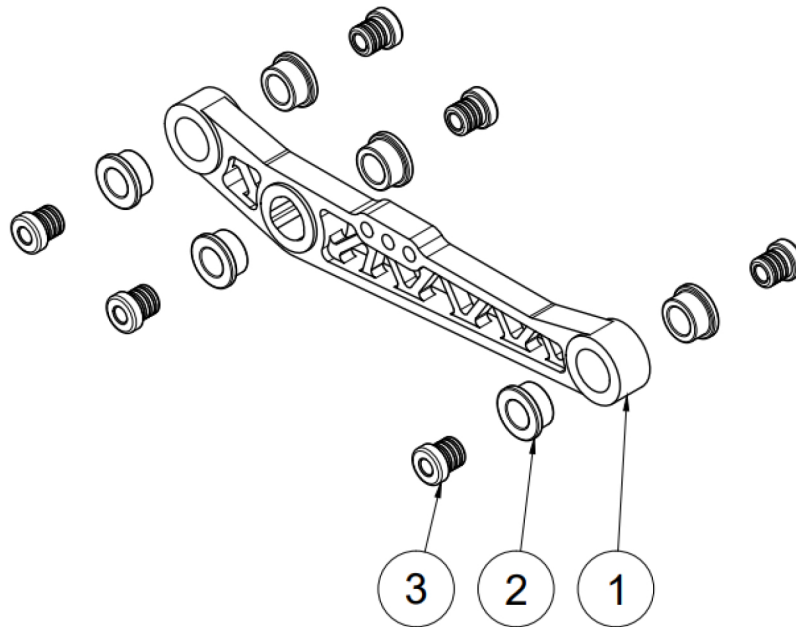




## Function7 Billet Aluminum Rear Lower Control Arms

*For 92-95 Civic, 92-97 Del Sol, & 94-01 Integra*

**Part #: F7-EGLCA-RB**



Thank you for choosing Function7 Products!

All Function7 Lower Control Arms come **unassembled**. A total of 4 bushings are needed for each mounting point. Each bushing pin must be properly lubricated prior to installation to ensure optimal performance and prevent premature wear. While we do the utmost to ensure quality checks, please inspect all parts before installation.

### Assembly instructions:

- 1: Double check to make sure the mounting holes are clear of any obstruction.
- 2: Insert the two polyurethane end bushings first by pushing them in place.
- 3: Apply grease as needed and install the two center billet aluminum bushing pins by thoroughly applying even pressure to the pins..

### Package Contents:

- x2 Billet 6061-T6 Aluminum Lower Control Arms
- x12 Polyurethane End Bushings
- x12 Billet Aluminum Bushing Pins
- x1 Poly Grease
- x1 Function 7 Decal



[www.function7.com](http://www.function7.com)

For questions and/or concerns, please email us at: [info@function7.com](mailto:info@function7.com)