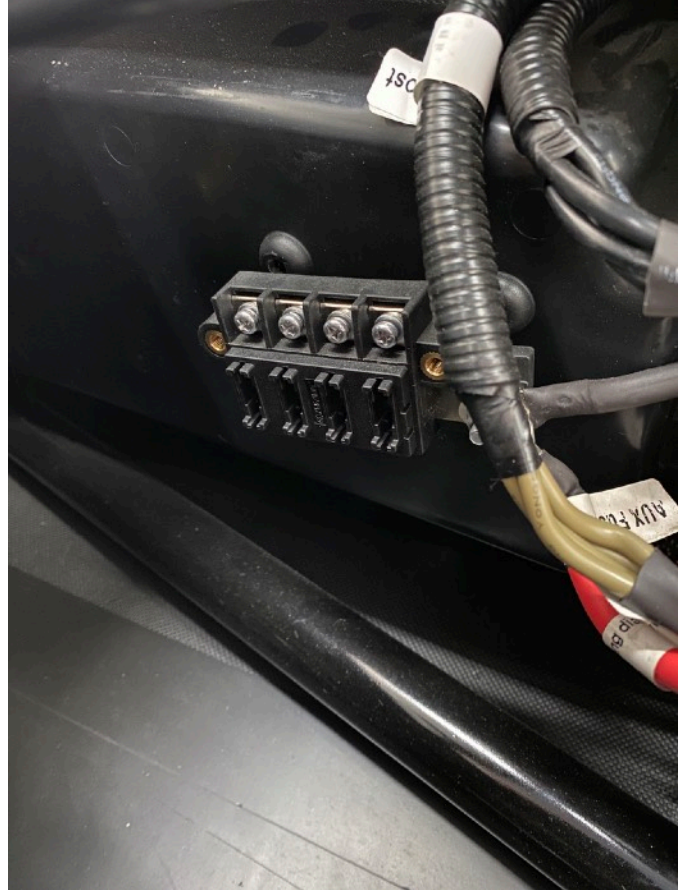


GG Lighting Speed UTV Second Battery Kit Installation Instructions:

Open glove box and remove the 2 4mm allen bolts holding the fuse block on. These might be behind a sticker. Remove the two positive wires from the fuse block.



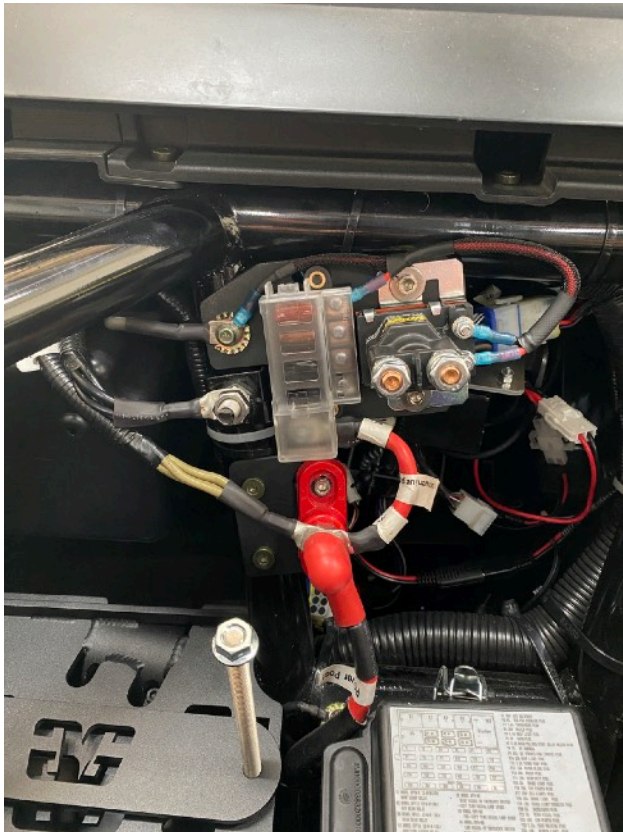
Reuse these allen heads to install the fuse block on our relocation plate.



Loosen the 16 mm nut on the positive power post. Use a 5 mm allen to remove the positive power post. Remove 8 mm bolt from roll cage and the ground wire.



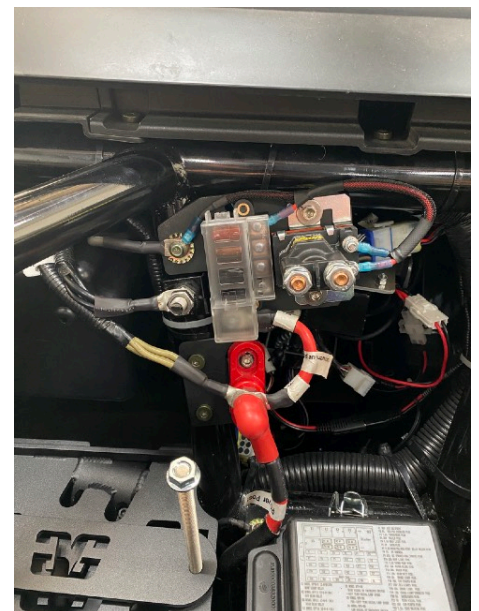
Reuse the 2 5 mm allens and 8 mm bolt to install the ground wire and relocation plate. Use the 6 mm hardware provided to mount the power post onto the relocation plate. Re-tighten the power post 16mm nut with positive cables.



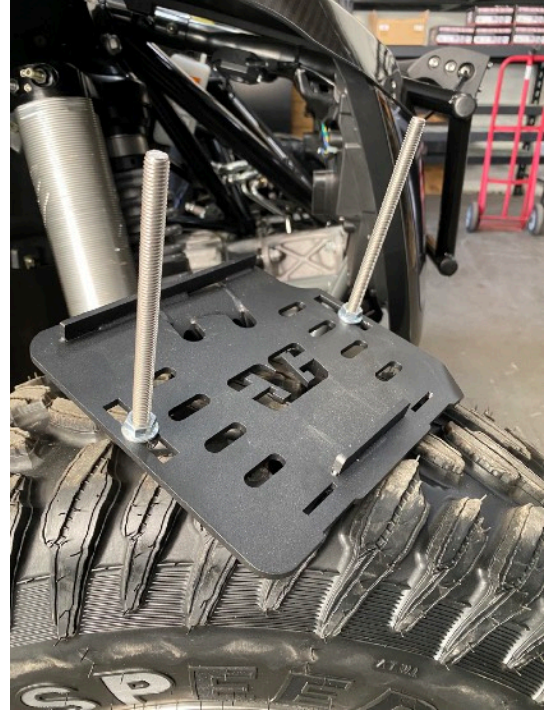


Reinstall the two positive wires to the fuse block. There is a black cable marked 12 V and a short red cable marked AUX Fuse. Shown above.

Mount the provided solenoid to the relocation plate using the provided 6 mm hardware. Install provided fuse into the top slot. Install provided two wire harness for the solenoid, the short wire goes to the top post and the first fuse post. The longer wire goes to the ground post under the 8mm bolt and lower post on the solenoid. Reinstall fuse cover.



Remove the second half of the tube clamp from the battery tray and preinstall the carriage bolts used to hold the top clamp.



Use 14mm wrench.
Position the tray on top of the roll bar as shown.



Install lower half of the tube clamp using 3/16ths Allen wrench.

Remove the lower skid plate using 8mm, 10mm sockets and 5mm Allen wrench.



Route your main battery cable, be sure to be mindful of your drive shaft when running this cable. Zip tie the wire securely through the channel.



Run to the positive side of your battery but do not connect yet. That will be your last step before reassembling.

Install your battery into the tray and secure with the top strap using the two provided carriage bolt nuts.



Connect the long battery cable to the left lug on the stinger solenoid and your new battery's positive cable to the right lug.

Zip tie battery's positive cable to the cross bar.

Connect the negative battery cable to the chassis ground and then to the battery.

Remove rear center console top half to access the battery. Connect long xpower cable to your Speed UTV battery positive terminal.

Reinstall skid plate.

