



Jeep JK T3 Tactical Pistol Mount

Included in the Kit



Tools Needed:

- 18mm speed wrench
- 13mm wrench
- 13mm deep socket and ratchet

3



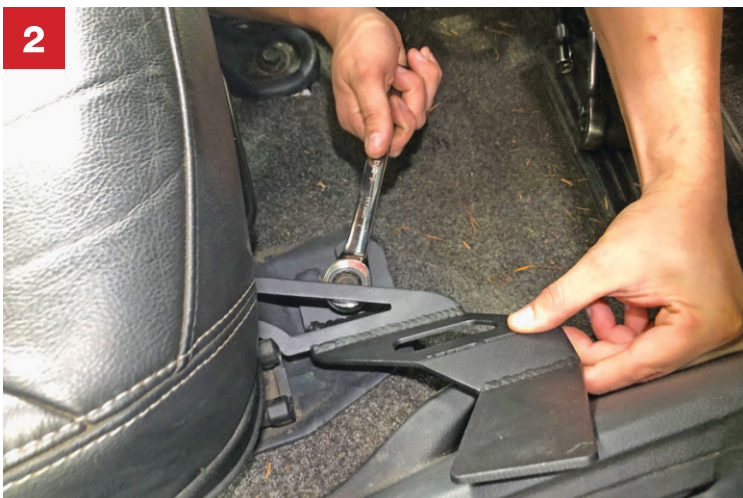
Grab the included hardware for the T-3 Pistol Mount. There should be a bolt, two washers and a nut.

1



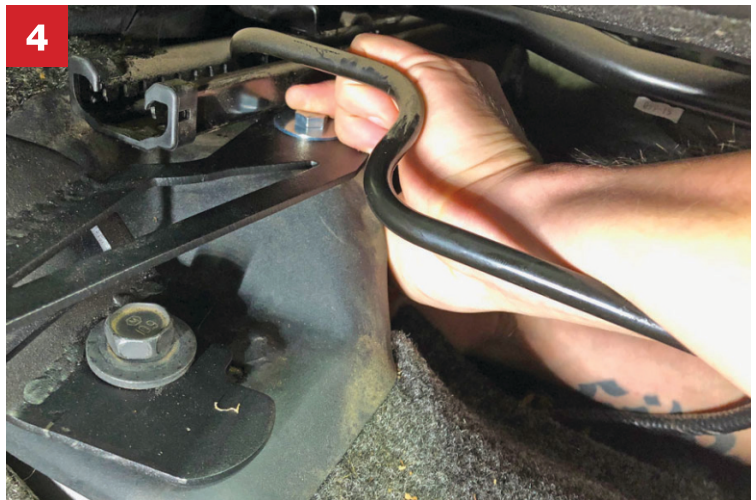
Start out by removing the driver's side front seat bolt closest to the center console.

2



Set the T3 Pistol Mount in place and reuse the OE seat bolt to bolt it down until it is almost snug. You want the bracket to be able to move just a little.

4



Slide one washer on the bolt and insert down through the second hole in the T3 Pistol Mount and through the hole in the JK seat bracket. You may need to adjust the T3 mount a little to get the inner bolt to line up.

5



Once you have the nut secured to the bolt, tighten the JK seat bolt down tight. That will make it easier to tighten the inner hardware.



6 The back side of the S-Tech T3 Holster has hook and loop (Velcro) pads sewn in.



7 Apply the included hook and loop adhesive pads to the T3 Pistol Mount. To match the holster pads, we installed the hook pad to the outside of the bracket, the side closest your leg.



8 And we installed the loop pad to the inside of the bracket, the side closest the center console.



9 To install the T3 Holster, slide the back flap down along the center console side of the T3 Pistol Mount and press against the outer hook & loop pad and wrap the two smaller flaps around and press to lock their hook & loop pads firmly securing the holster to the T3 Pistol Mount.



10 Lower the holster down against the outside of the T3 Pistol Mount and press in to lock the outer hook & loop pad and wrap the two smaller flaps around and press to lock their hook & loop pads firmly securing the holster to the T3 Pistol Mount.



11 We set a Glock 19X in the holster for pics. The pistol fits beautifully and the thumb strap holds the pistol securely in place for those rough roads. The Universal Nylon Holster included with the T3 Tactical Mount is adjustable to fit many different models of pistols, from .380 to 9mm to .45. However you can use your favorite holster, including Kydex models, if you choose.



12 The T3 mount angles the pistol back 22° and sits at a 10° offset angle. This allows it to sit out of the way enough that you don't even know it is there. Even for a big tall person like Maxx, our Sales/Counter guy at the Silverdale, WA store.



13 The mounting placement also allows for a fast draw. Just drop your hand down from the steering wheel and your hand rests naturally on top of the pistol. Then peel up the thumb strap and the pistol smoothly out of the holster.