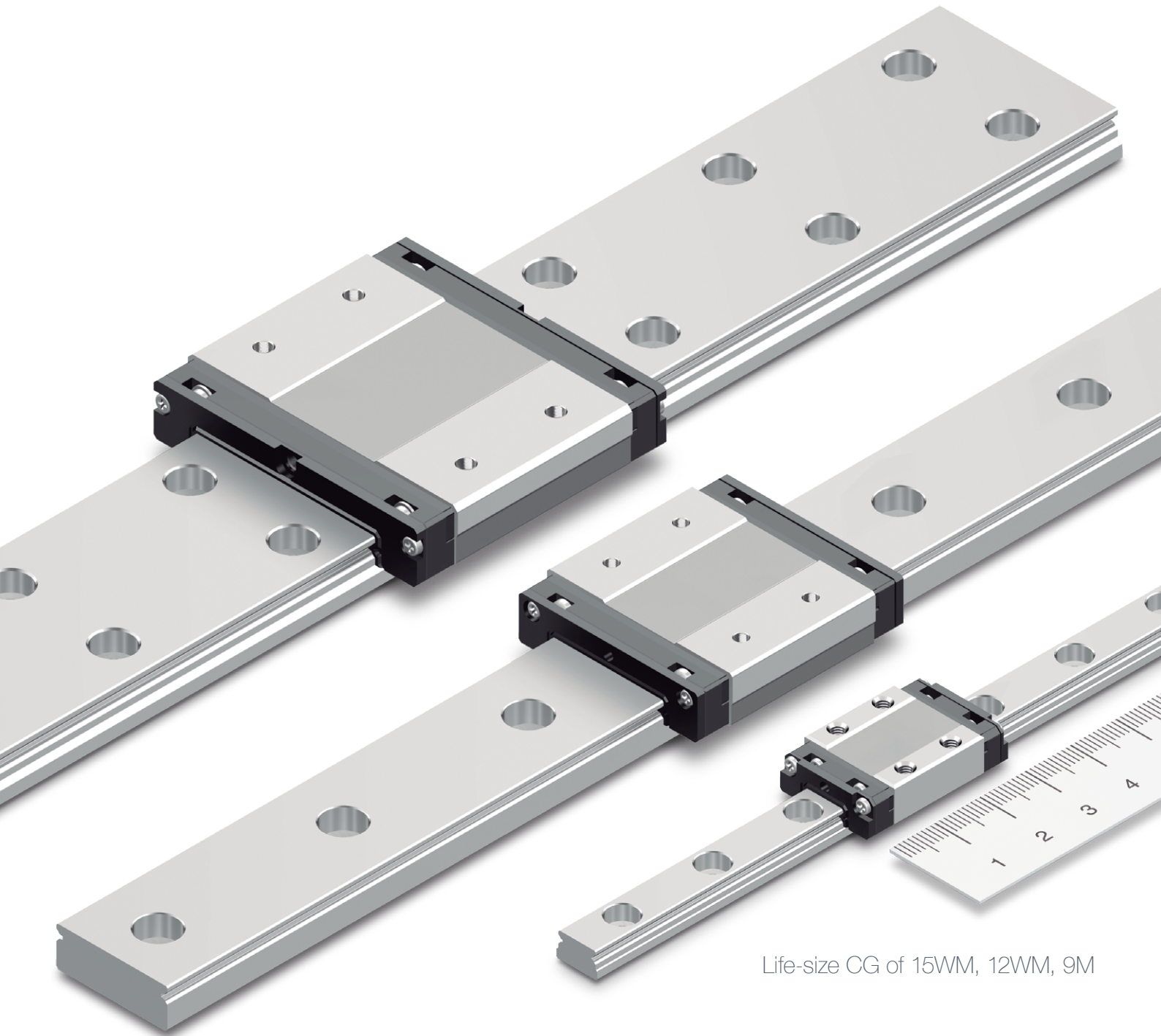




NEW

Miniature Type LM Guide **RSX**



Life-size CG of 15WM, 12WM, 9M

Smooth movement achieved by optimizing the circulation section

RSX Miniature Type LM Guide

Structure and Features

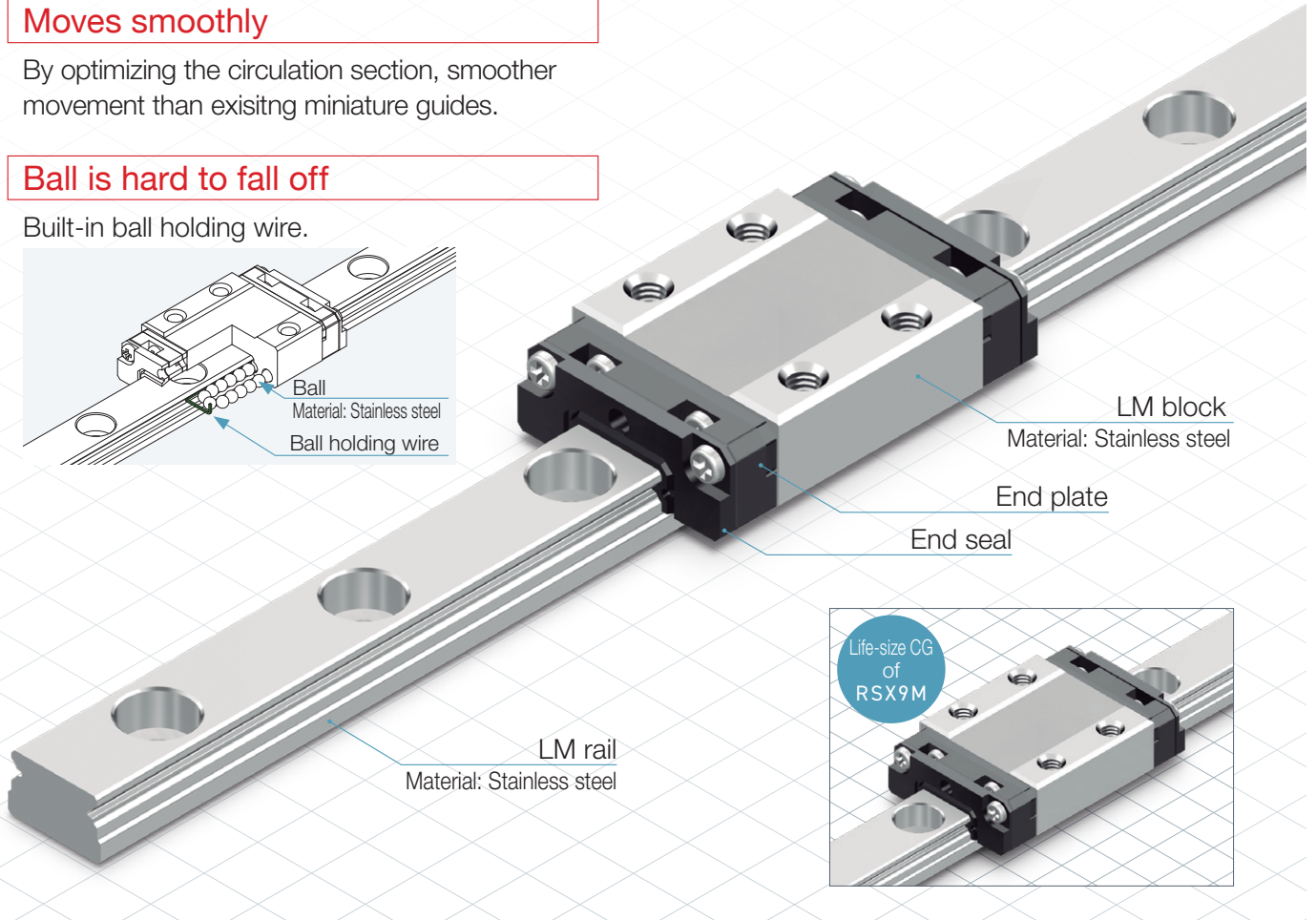
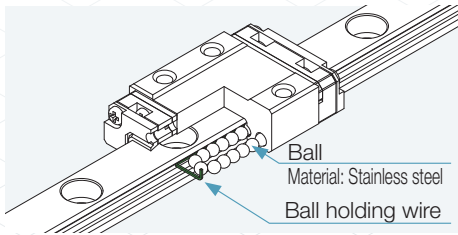
The RSX type contributes to space saving due to its compact external dimensions. In addition, surface treatment, metal circulation parts, block special length, effective stroke type, etc. can be customized.

Moves smoothly

By optimizing the circulation section, smoother movement than existing miniature guides.

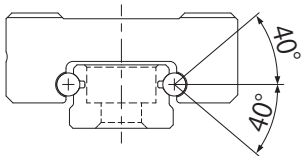
Ball is hard to fall off

Built-in ball holding wire.

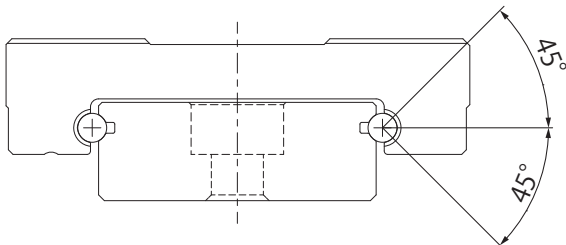


RSX type's groove contact structure

RSX type can receive loads in all directions (4 directions).



RSX7M,9M,7WM,9WM

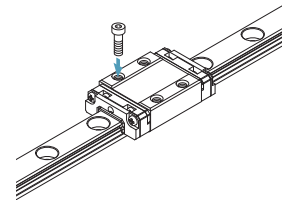


RSX12M,15M,12WM,15WM

Lineup

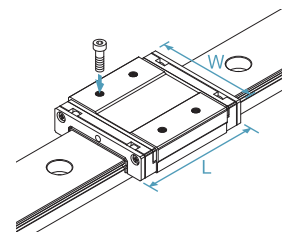
RSX-M

RSX standard type.



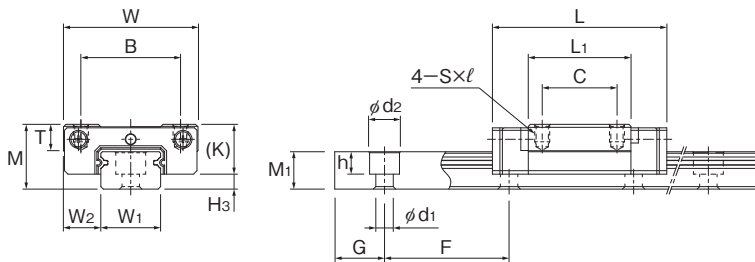
RSX-WM

A longer overall LM block length (L), wider width (W), and higher rated load and allowable moment than model RSX-M.

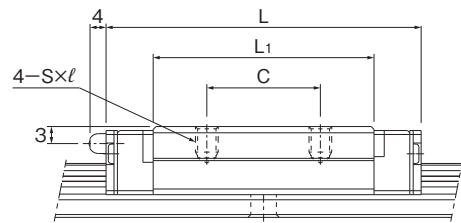


Block Type	7	9	12	15
RSX-M	○	○	○	○
RSX-WM	○	○	○	○

Specification Table



RSX7M,9M,12M

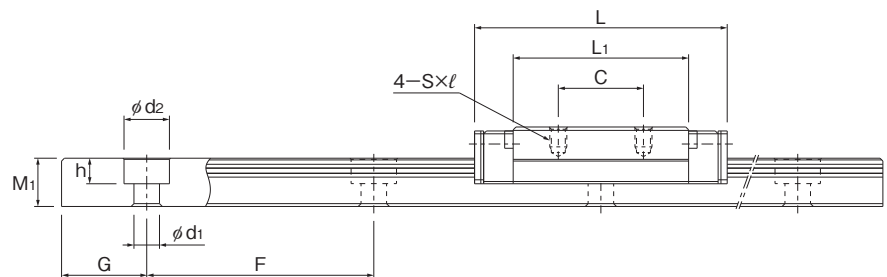
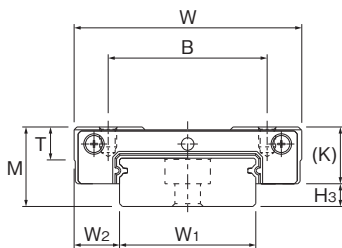


RSX15M

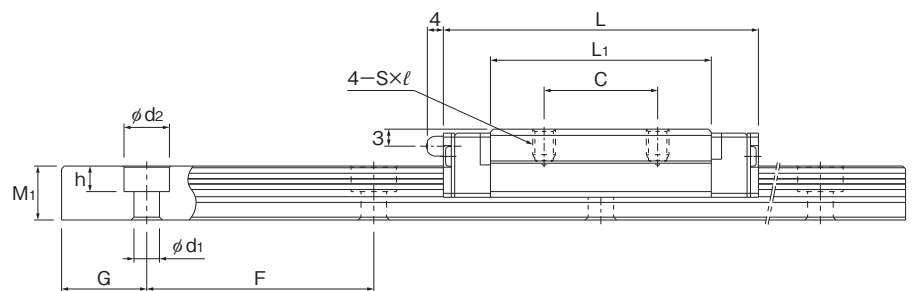
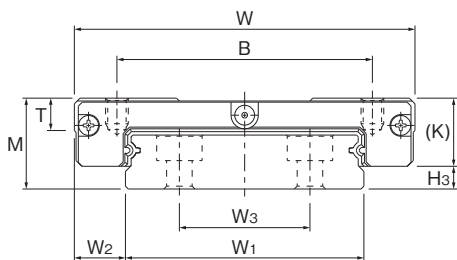
Unit: mm

Model No.	Outer dimensions			LM block dimensions						H ₃	W ₂	LM rail dimensions						Basic load rating		Mass	
	Height M	Width W	Length L	B	C	S × l	L ₁	T	K			Width W ₁ 0 -0.02	Height M ₁	G	Pitch F	d ₁ × d ₂ × h	Length Max	C [kN]	C ₀ [kN]	LM block [kg]	LM rail [kg/m]
RSX 7M	8	17	23.4	12	8	M2×2.6	13.4	-	6.5	1.5	5	7	4.7	5	15	2.4×4.2×2.3	480	1.16	1.54	0.008	0.227
RSX 9M	10	20	30.8	15	10	M3×2.8	19.8	-	7.8	2.2	5.5	9	5.5	7.5	20	3.5×6×3.3	1240	2.22	3.06	0.018	0.32
RSX 12M	13	27	35	20	15	M3×3.5	20.6	5.3	10	3	7.5	12	7.5	10	25	3.5×6×4.5	2000	3.36	4.21	0.037	0.65
RSX 15M	16	32	42.9	25	20	M3×4	25.7	5.8	12	4	8.5	15	9.5	15	40	3.5×6×4.5	2000	5.59	6.78	0.069	0.96

Note) Length Max indicates the standard maximum length of the LM rail.
Note) RSX15M has a grease nipple PB107. RSX7M, 9M and 12M have greasing holes.



RSX7WM,9WM,12WM



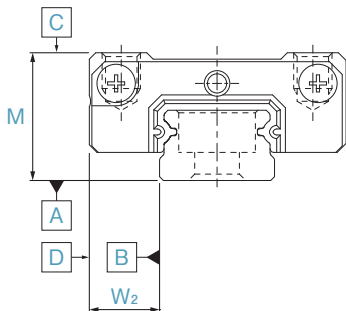
RSX15WM

Unit: mm

Model No.	Outer dimensions			LM block dimensions						H ₃	W ₂	LM rail dimensions						Basic load rating		Mass		
	Height M	Width W	Length L	B	C	S × l	L ₁	T	K			Width W ₁ 0 -0.02	W ₃	Height M ₁	G	Pitch F	d ₁ × d ₂ × h	Length Max	C [kN]	C ₀ [kN]	LM block [kg]	LM rail [kg/m]
RSX 7WM	9	25	31	19	10	M3×2.8	20.4	-	7	2	5.5	14	-	5.2	10	30	3.5×6×3.2	480	1.63	2.51	0.018	0.54
RSX 9WM	12	30	39	21	12	M3×2.8	27	-	8.3	3.7	6	18	-	7.5	10	30	3.5×6×4.5	1430	2.8	4.28	0.035	1.01
RSX 12WM	14	40	44.5	28	15	M3×3.5	30.9	4.5	10	4	8	24	-	8.5	15	40	4.5×8×4.5	2000	4.46	6.31	0.075	1.52
RSX 15WM	16	60	55.5	45	20	M4×4.5	38.9	5.6	12	4	9	42	23	9.5	15	40	4.5×8×4.5	2000	7.43	10.1	0.17	2.87

Note) Length Max indicates the standard maximum length of the LM rail.
Note) RSX15WM has a grease nipple PB107. RSX7WM, 9WM and 12WM have greasing holes.

Accuracy Standards



Accuracy Standards

Unit: mm

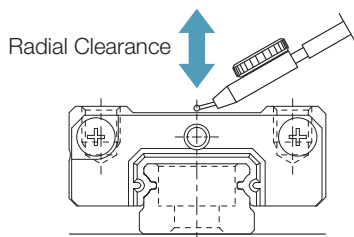
Model No.	Accuracy Standards Item	Normal grade	High accuracy grade	Precision grade
		No Symbol	H	P
RSX7M/7WM	Dimensional tolerance in height (M)	±0.04	±0.02	±0.01
	Difference in Height (M)	0.03	0.015	0.007
RSX9M/9WM	Dimensional tolerance in width (W)	±0.04	±0.025	±0.015
RSX12M/12WM	Difference in Width (W ₂)	0.03	0.02	0.01
RSX15M/15WM	Running parallelism of surface C against surface A	See the table on the right		
	Running parallelism of surface D against surface B	See the table on the right		

Running parallelism

Unit: μm

LM rail length (mm)	Running Parallelism Values			
	Above	Or less	Normal grade	High accuracy grade
—	40	8	4	1
40	70	10	4	1
70	100	11	4	2
100	130	12	5	2
130	160	13	6	2
160	190	14	7	2
190	220	15	7	3
220	250	16	8	3
250	280	17	8	3
280	310	17	9	3
310	340	18	9	3
340	370	18	10	3
370	400	19	10	3
400	430	20	11	4
430	460	20	12	4
460	520	21	12	4
520	550	22	12	4
550	640	22	13	4
640	670	23	13	4
670	700	23	13	5
700	820	23	14	5
820	850	24	14	5
850	970	24	15	5
970	1030	25	16	5
1030	1150	25	16	6
1150	1330	26	17	6
1330	1420	27	18	6
1420	1510	27	18	7
1510	1830	28	19	7
1830	2000	28	19	8

Radial Clearance Specifications



Radial Clearance Specifications

Unit: μm

Model No.	Normal (No Symbol)	Light preload (C1)
RSX7M/7WM	-2 to +2	-3 to 0
RSX9M/9WM	-2 to +2	-4 to 0
RSX12M/12WM	-3 to +3	-6 to 0
RSX15M/15WM	-5 to +5	-10 to 0

Model number coding

Select an option Fixed symbol

2 **RSX9M** **UU** **C1** **F** + **220L** **P** **F** **M** - **I**

No. of LM blocks used on the same rail
No symbol: Single block

Model number
Contamination protection accessory symbol (Only UU seal available)
No symbol: Without seal

Radial clearance symbol
No symbol: Normal clearance
C1: Light preload

With surface treatment on the LM block
No symbol: No surface treatment

LM rail length (in mm)

Accuracy symbol
No symbol: Normal grade
H: High accuracy grade
P: Precision grade

Stainless steel LM rail

Symbol for No. of rails used on the same plane
No symbol: Single-rail

With surface treatment on the LM rail
No symbol: No surface treatment

THK CO., LTD.

Headquarters 2-12-10 Shibaura, Minato-ku, Tokyo 108-8506 Japan

International Sales Department Phone: +81-3-5730-3860

www.thk.com

North America

THK America, Inc.

- HeadquartersPhone: +1-847-310-1111
- Chicago OfficePhone: +1-847-310-1111
- North East OfficePhone: +1-631-244-1565
- Atlanta OfficePhone: +1-770-840-7990
- Los Angeles OfficePhone: +1-949-955-3145
- San Francisco OfficePhone: +1-925-455-8948
- Detroit OfficePhone: +1-248-858-9330
- Toronto OfficePhone: +1-905-820-7800

South America

THK BRAZIL INDUSTRIA E COMERCIO LTDA.

Phone: +55-11-3767-0100

Europe

THK GmbH

- European HeadquartersPhone: +49-2102-7425-555
- Düsseldorf OfficePhone: +49-2102-7425-0
- Stuttgart OfficePhone: +49-7141-4988-500
- U.K. OfficePhone: +44-1384-471550
- Italy OfficePhone: +39-02-9901-1801

- Sweden OfficePhone: +46-8-445-7630
- Austria OfficePhone: +43-7229-51400
- Spain OfficePhone: +34-93-652-5740
- Turkey OfficePhone: +90-216-362-4050
- Prague OfficePhone: +420-2-41025-100
- Moscow OfficePhone: +7-495-649-80-47
- THK Europe B.V.
- Eindhoven OfficePhone: +31-40-290-9500
- THK France S.A.S.
- Paris OfficePhone: +33-1-7425-3800

China

THK (CHINA) CO., LTD.

- HeadquartersPhone: +86-411-8733-7111
- Shanghai BranchPhone: +86-21-6219-3000
- Beijing BranchPhone: +86-10-8441-7277
- Chengdu BranchPhone: +86-28-8526-8025
- Guangzhou BranchPhone: +86-20-8523-8418
- Shenzhen BranchPhone: +86-755-2642-9587
- Xian BranchPhone: +86-29-8834-1712
- THK (SHANGHAI) CO., LTD.Phone: +86-21-6275-5280

Taiwan

THK TAIWAN CO., LTD.

- Taipei HeadquartersPhone: +886-2-2888-3818
- Taichung OfficePhone: +886-4-2359-1505
- Tainan OfficePhone: +886-6-289-7668

South Korea

- Seoul Representative OfficePhone: +82-2-3468-4351

Singapore

THK LM System Pte. Ltd.Phone: +65-6884-5500

Thailand

THK RHYTHM (THAILAND) CO., LTD. LM System Division

- Bangkok BranchPhone: +66-2751-3001

India

THK India Pvt. Ltd.

- Headquarters & Bengaluru BranchPhone: +91-80-2340-9934
- Pune BranchPhone: +91-72-7600-2071
- Chennai BranchPhone: +91-44-4042-3132
- Ahmedabad BranchPhone: +91-79-6134-4925
- Delhi BranchPhone: +91-12-4676-8695