

## SP SERIES | NYLATRAC<sup>®</sup> STANDARD (open-style carriers)



Shown with hinged bars on inner radius.

### PART NUMBER CONFIGURATION:

Model	Height	Hinged Bar Location	Separators	Length	Bracket (fixed)	Bracket (moving)
SP300	5	INNER	1	25.20	STSTR#1	STSTR#1

Following above example, add dashes. Part number = **SP300-5-INNER-1-25.20-STSTR#1-STSTR#1**

Separators per link specified; use '0' for none.

Carrier Length (between flanges) is specified to two decimals in inches. Total number of links depends on pitch length.

Specify bracket type (STSTR) and arrangement # for each end.

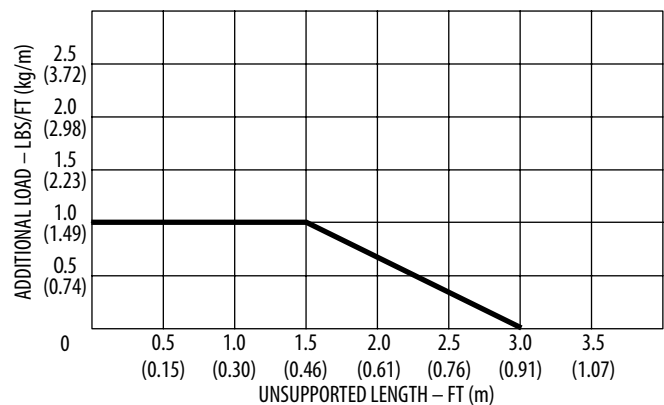
### SPECIFICATIONS

MODEL	A inches (mm)	C inches (mm)	Q inches (mm)	WEIGHT lb/ft (kg/m)
SP059	0.59 (15)	1.05 (27)	One Slot	0.20 (0.30)
SP100	1.00 (25)	1.46 (37)	0.59 (15)	0.20 (0.30)
SP150	1.50 (38)	1.96 (50)	0.94 (24)	0.23 (0.34)
SP200	2.00 (51)	2.46 (62)	1.44 (37)	0.26 (0.39)
SP250	2.50 (64)	2.96 (75)	1.94 (49)	0.28 (0.42)
SP300	3.00 (76)	3.46 (88)	2.44 (62)	0.29 (0.43)
SP400	4.00 (102)	4.46 (113)	3.44 (87)	0.36 (0.54)

Note: Hinged bars available on inner (standard) or outer radius. Please specify when ordering.

HEIGHT	R inches (mm)	H inches (mm)	K inches (mm)	CL inches (mm)
3	1.05 (27)	3.15 (80)	2.78 (70)	5.70 (145)
4	1.48 (37)	4.00 (102)	3.21 (81)	7.03 (179)
5	1.85 (47)	4.75 (121)	3.58 (91)	8.21 (209)
7	2.85 (72)	6.75 (171)	4.58 (116)	11.35 (288)
85	3.73 (95)	8.50 (216)	5.46 (139)	14.10 (358)

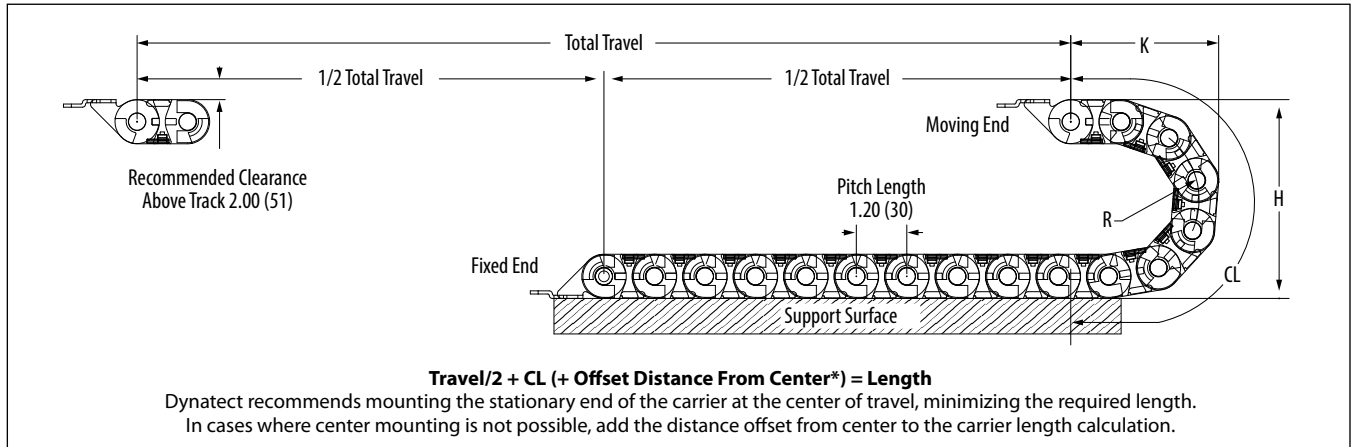
### SP SERIES – WEIGHT LOAD



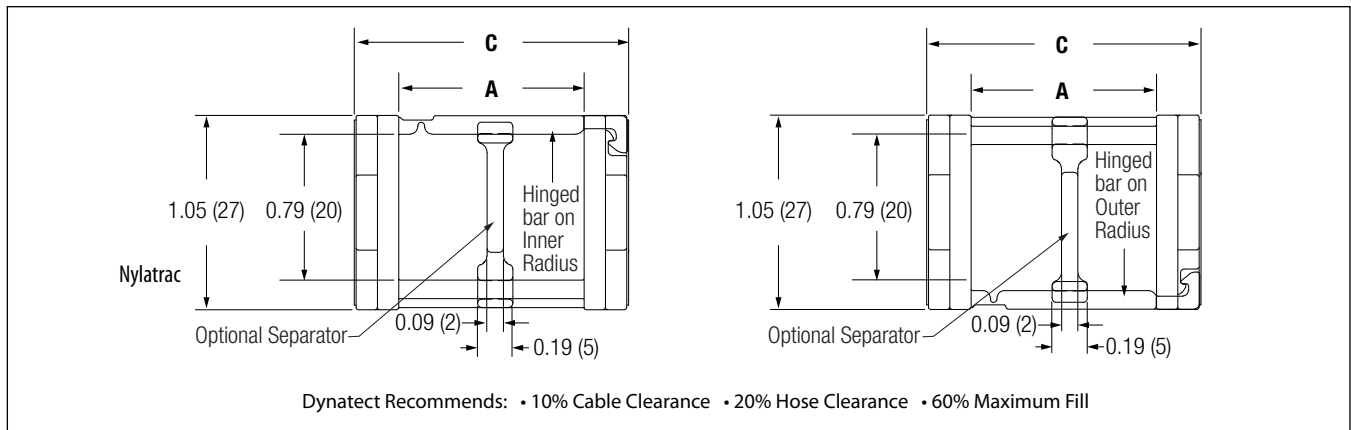
# SP SERIES | NYLATRAC<sup>®</sup> STANDARD (open-style carriers)

## CARRIER SIDE VIEW

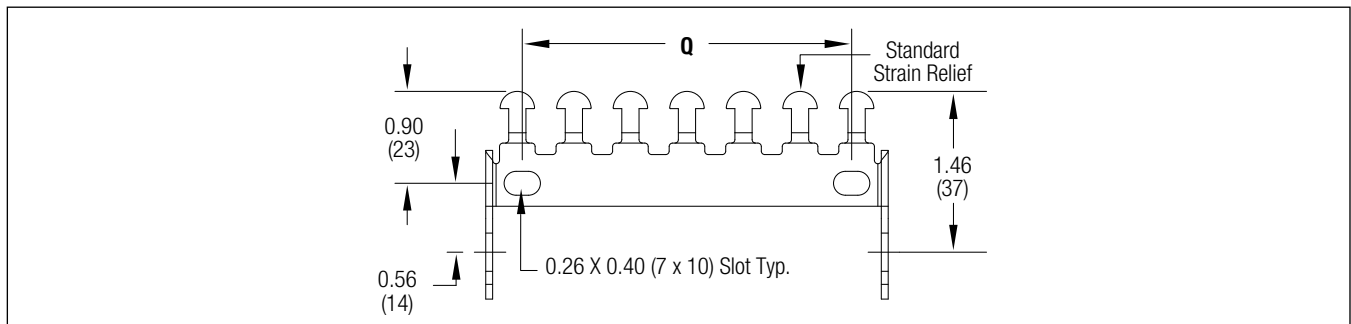
Dimensions in inches (mm)



## CARRIER CROSS SECTION



## TOP VIEW MOUNTING BRACKET



## BRACKET ARRANGEMENTS

