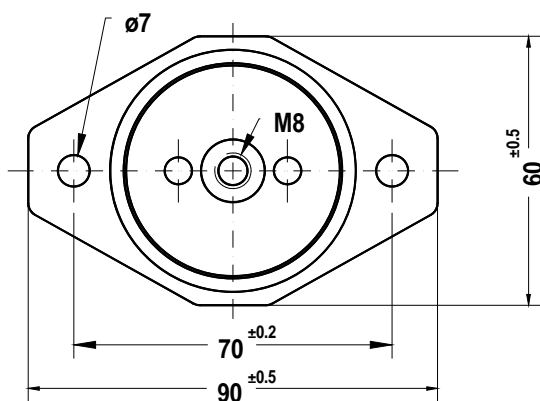
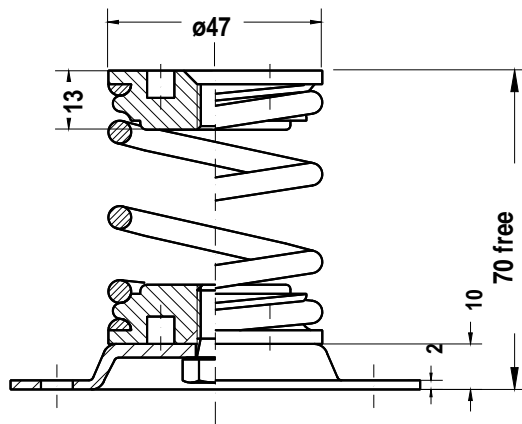


Spring isolators

FR-E-56-1-[]-A

Applications

- Resilient suspension of rotating machines with rotational speed of > 600 rpm , i.e. ventilators, motors, blowers, pumps, air conditioner, test stands, compressors, scales etc.



Description

- Base plate of steel, zinc coated
- Spring made of spring steel wire, black coated
- Damping cushion of stainless steel wire
- Spring end caps of Al-alloy
- Vertical natural frequency: 4 - 4,5 Hz
- Weight: 0,2 - 0,25 kg depending on type
- Elastic max. load:
2 g vertical 0,5 g horizontal

Type	Load
FR-E-56-1-15 A	10 - 15 daN
FR-E-56-1-20 A	15 - 20 daN
FR-E-56-1-30 A	20 - 30 daN
FR-E-56-1-50 A	30 - 50 daN