



## Remote Video Speaker Microphone



Hytera's Remote Video Speaker Microphone (RVM) is designed to capture, store and share media including audio, image and video evidence taken from the field. The body-worn camera with remote speaker phone allows users to make and receive voice communications, initiate an emergency alarm, and deliver real-time video to a control centre over the LTE network, even in low-light conditions; when paired with the Hytera Multi-mode Advanced Radio.

The Hytera RVM docks into a specifically designed Multi-Unit Charger that automatically exports audio, video, images and log files to the Digital Evidence Management (DEM) platform. This feature ensures content captured remains tamper-proof and is securely transferred to the control centre.



## Camera

### Outstanding Recording Performance

- 180° Rotatable & 140° Wide-angle Lens
- 16-megapixel Image Sensor
- 1080P @ 60FPS
- Six Infrared LED



## Keys

### Ergonomic Design for Easy Operation

- PTT
- Playback
- Emergency Call Button
- Channel Change
- One-touch Operation for Capture Video/Voice Recording

## Structure Design

### Professional for Mission Critical Scenario

- MIL-STD-810 G/IP67
- Speaker (2 Watt)
- Light Weight

## Battery

- 2500 mAh Removable
- ≥8 hrs (Working)
- ≥250 hrs (Standby)

## Connection

- Wired/BT 4.0/Wi-Fi
- Real-time Video Send Back Solution

# RVM Data Transfer and Collection Solution

## Data/Video Real-time Transfer



## Data/Video Storage & Collection



# RVM Multi-Unit Charger

- Simultaneously charge six RVM's and six batteries.
- Indicates power, battery charge status and data transmission.
- Automatically export audio, video, image and log files.\*
- Reprograms and upgrades the RVM\*

### Note

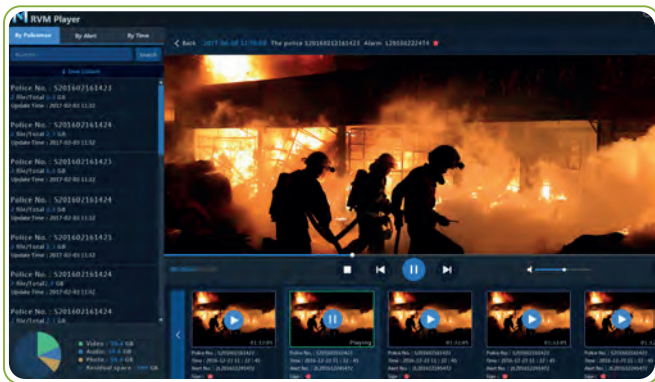
※ When paired with MDM via USB cable.

### Specifications:

Input: 12 V/7 A  
Output: 2\*6\*5 V/1 A  
Interface: USB



# Smart Mobile Device Management



Smart MDM collects and stores digital evidence from the RVMs via Multi-Unit Charger. With intuitive Graphic User Interface (GUI), you can review, manage, and share data simply and efficiently from your PC.

### Highlights:

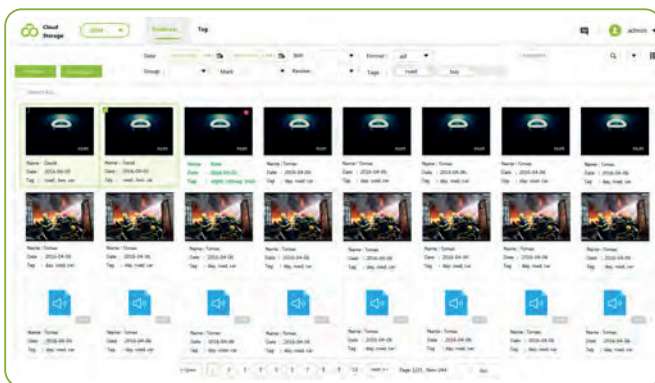
#### RVM Management

- Comprehensively manage the RVM devices.
- Programming and upgrading the software/firmware.

#### Data Processing

- Replay local data.
- Import and upload data to the DEM automatically.
- Automatically clear collected data.

# Digital Evidence Management



Digital Evidence Management Platform collects and stores the digital evidence on a secure network. Easily find data by tagging an evidence file and find it later through a key word search. For extra data security, manage customised permissions to different users.

### Highlights:

#### Centralised Data Management

- Cloud server for centralised storage with RVM automatic data upload.
- Logging system for evidence retrieval. Classify evidence files and correlate them with a specific case using Global Navigation Satellite System (GNSS) location information.
- Capable of gathering and organising large amounts of data.
- Rich interface, compatible with other systems.

#### Redundancy and Security

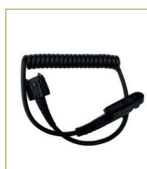
- Balancing mechanism for reliability with redundancy backup.
- User authorisation for security.

# Specifications

Size & Weight	Dimensions (H x W x D)	106.5mm x 60mm x 24mm
	Weight	<170g (including battery)
Camera	Image Sensor	16-megapixel
	Lens	Fixed Focus, all glass, 180° rotatable, diagonal 140°, horizontal 106°, vertical 78°
	Focus Range	0.1 m - infinity
Battery	Battery life (continuous video shooting)	≥ 8 hours
	Battery Capacity	2500 mAh
	Charging Time	≤ 4 hours
Display	Dimensions	2.4-inch
	Resolution	240(RGB) * 320 Dot
	Type	TFT-LCD 262K color display
Recording	Internal Memory	16 GB (standard configuration); 32 GB/64 GB/128 GB (optional)
	Video Format	mp4
	Video Encoding Technology	H.264
	Video Resolutions	VGA, 720P, 1080P
	Video Frames Per Second	30FPS and 60FPS
	Audio Format	AAC (Advanced audio coding)
	Image Format	JPG
	Image Resolution	4608*1296 (16-megapixel), 3072*1728 (5-megapixel), 2304*1296 (3-megapixel)
Audio	Pre-recording/Post-recording	20s/30s
	Speaker Power	2 Watt
Connectivity	Microphone	Silicon microphone x 1, -38 dB; electret microphone x 1, -42 dB
	Wi-Fi	802.11 b/g/n Access point and station support
	BT	BT4.0 Audio and BLE support
Auxiliary	Connector	Mirco USB port, 10-pin contact port
	IR Lamp	OSRAM x 6
	Night Vision Range (without lighting)	≥ 3 m
Durability	White LED	1 Watt x 1
	Ingress Protection	MIL-STD-810G, IP67
	Drop Resistance	1.5 m
	ESD	Contact discharge: 6 kV; air discharge: 12 kV
	Operating Temperature	-20°C to +60°C
Compatibility	Storage Temperature	-40°C to +85°C
	System Compatibility	WIN XP/7/8/10
Accessories	Radio Compatibility	Hytera Radios
	Standard	USB cable, charger, clip (rotatable, length-adjustable)
	Optional	Shoulder epaulette, radio connection cable, multi-unit charger, Wireless Remote controller

All specifications are subject to change without notice due to continuous development.

## Accessories



RVM to PDC/PTC series Cable  
RVM to PD7/9 series Cable  
RVM to X1/Z1 series Cable



Clip



Wireless Ring PTT



Charger



Battery

Further information can be found at:

[www.hytera.co.uk](http://www.hytera.co.uk)

Keep up to date with Hytera on social media.



**Hytera Communications Corporation Limited**

Stock Code: 002583.SZ

Address: Hytera Communications (UK) Co. Ltd.

Hytera House, 939 Yeovil Road, Slough, Berkshire. SL1 4NH, UK.

Tel: +44 (0) 1753 826 120 Fax: +44 (0) 1753 826 121

[www.hytera.co.uk](http://www.hytera.co.uk)

[info@hyterauk.co.uk](mailto:info@hyterauk.co.uk)

Hytera reserves the right to modify the product design and the specifications. In case of a printing error, Hytera does not accept any liability. All specifications are subject to change without notice.

Encryption features are optional and have to be configured separately. They are also subject to European export regulations.

HYT, Hytera are registered trademarks of Hytera Communications Corp. Ltd  
© 2017 Hytera Communications Corp., Ltd. All Rights Reserved.