

Sanctuary

PLATINUM HOME & OFFICE VAULT

SANCTUARY PLATINUM HOME & OFFICE VAULT INSTRUCTION MANUAL

IMPORTANT:

Please read this information and follow all safety rules carefully before operating your gun safe. Failure to do so will void your warranty.

WARNING



Tip Over Hazard

A child or adult can tip the safe and be killed or seriously injured.

Failure to secure the safe as shown in these instructions can result in death or serious injury to children and adults. Children should not play with or around the safe at any time.

DISCLAIMER - READ BEFORE SAFE SETUP

PLEASE READ THIS INFORMATION CAREFULLY BEFORE OPERATING YOUR SANCTUARY HOME AND OFFICE VAULT

DO NOT LOCK THIS MANUAL OR THE OVERRIDE ACCESS KEYS IN YOUR VAULT.

- Thank you for choosing a Sanctuary Vault to protect your valuables. We are committed to securing, organizing and protecting your most important documents, valuables and keepsakes.
- Your vault is built to last a lifetime. However, please understand that the locking mechanism has precision parts. If you experience ANY difficulty opening or closing your vault **DO NOT FORCE THE SAFE OPEN**. Doing so may jam the components in the lock, which will require a safe technician to unlock your vault. This causes an inconvenience for you, and may lead to a claim denial.
- If you experience problems or challenges with your vault please contact us. Many issues can be quickly resolved without the product being returned.

Customer Service - (888) 792-4264

SAFETY

- **FOR YOUR SAFETY ALWAYS UTILIZE TWO PEOPLE FOR SAFE UNBOXING AND INSTALLATION OF THE VAULT TO INSURE STABILITY DURING SETUP.**
- The vault itself and vault door is extremely heavy. Always ensure proper installation and do not open the door with the vault on an uneven or unstable floor. Ignoring this could result in serious injury or death.
- Keep a record of your combination number in a secure place, away from children, and separate from your vault. You will need this information along with your proof of purchase to obtain technical assistance and replacement keys.

WEAPON STORAGE

- If you choose to utilize this vault to store a weapon always follow proper weapon and local laws when storing a weapon.
- SA Consumer Products strongly recommends that you do not store loaded guns.
- Always follow the firearm safety rules set out by the firearm's manufacturer.
- A Sanctuary vault or any other firearm storage device cannot take the place of other safety procedures including advising children of the dangers of firearms.
- SA Consumer Products and its distributors of the Sanctuary vault do not recommend, suggest, advise, promote, or otherwise condone the ownership or use of firearms. We believe the decision to own or use a firearm is a serious decision that should only be made by an adult who has carefully considered the risks and benefits of such a decision.

TABLE OF CONTENTS

IMPORTANT INFORMATION	1
1 REGISTRATION	3
2 UNDERSTANDING YOUR VAULT	4
3 INSPECTION	5
4 OPENING YOUR VAULT	5
5 E-LOCK BATTERY INSTALLATION	6
6 LOW BATTERY WARNING	6
7 E-LOCK SECURITY CODE SETUP.....	7
8 LOCKED OUT OF YOUR VAULT	8
9 ANTI THEFT ALERT ALARM SYSTEM.....	8
10 E-LOCK QUIET MODE	8
11 PROPER PLACEMENT AND MOVEMENT OF VAULT	9
12 SECURING YOUR VAULT	10
13 LOADING YOUR VAULT	11
14 KEEPING VAULT DRY	11
15 MAINTAINING HINGES AND INTERNAL MECHANISM	11

THIS MANUAL SERVICES THE FOLLOWING STYLE NUMBERS

SA-H1
SA-H2
SA-H3
SA-H4
SA-H5

1. REGISTRATION

Please ensure you register your safe by visiting our website. Locate the “contact” button located on the top header of the home page. Select registration from the drop down menu and complete the registration form.

www.saproducts.com

By registering your Sanctuary Vault we will be able to expedite and address any problems or challenges you may have which would otherwise require a notary letter and proof of payment.

REGISTRATION INFORMATION

The information you record onto this page will be required in the event you cannot access the contents of your Sanctuary Vault. Please fill out all the required information below and retain for your records and safe keeping.

PLEASE HAVE THIS INFORMATION READY PRIOR TO CALLING FOR TECHNICAL ASSISTANCE AT:

SA Products Customer Service - (888) 792-4264

PURCHASE DATE:

PURCHASE PRICE (BEFORE TAX):

MODEL NUMBER:

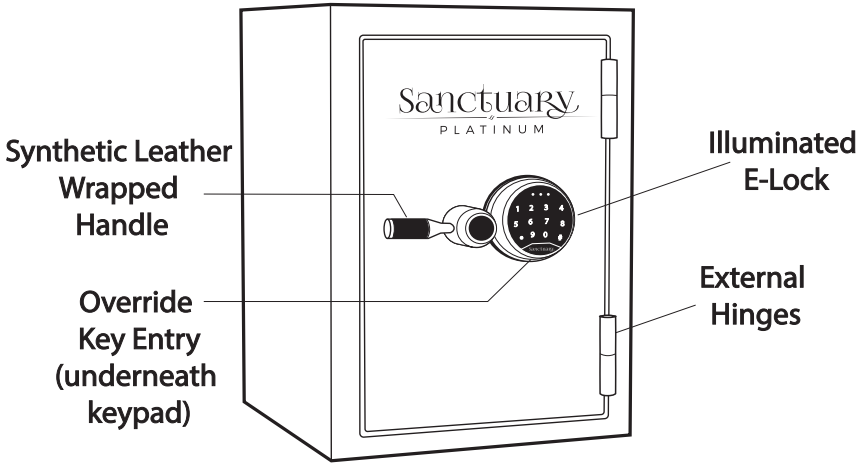
SERIAL NUMBER:

RETAILER PURCHASED FROM:

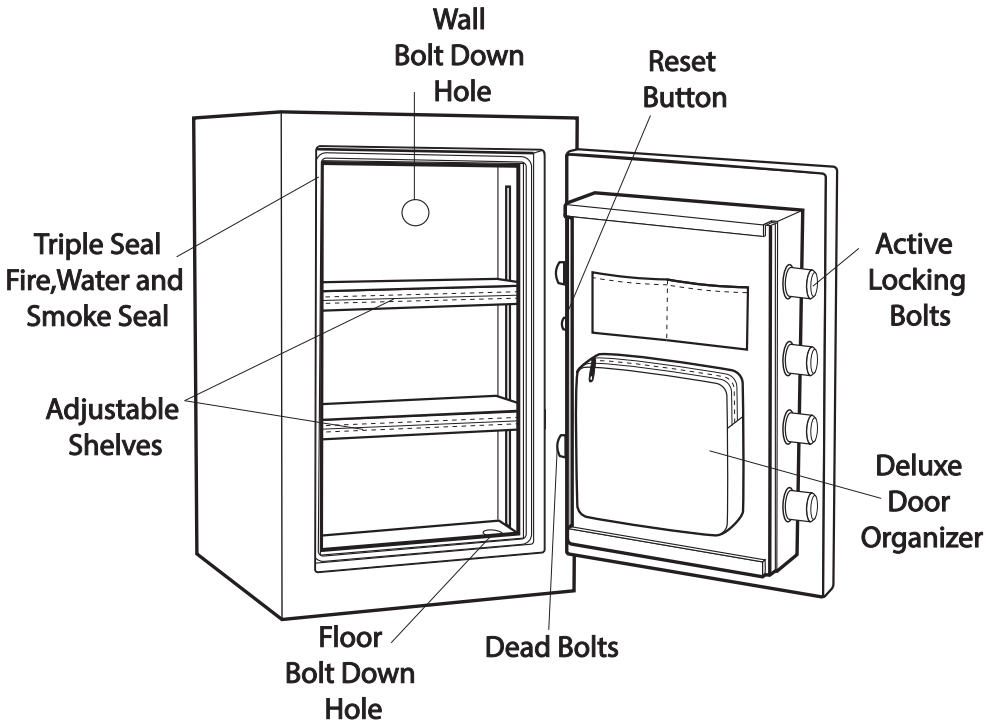
KEY NUMBER (IF APPLICABLE):

2. UNDERSTANDING YOUR VAULT

EXTERIOR (Closed)



INTERIOR (Open)

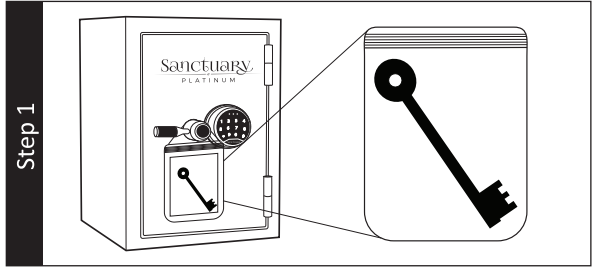


3. INSPECTION

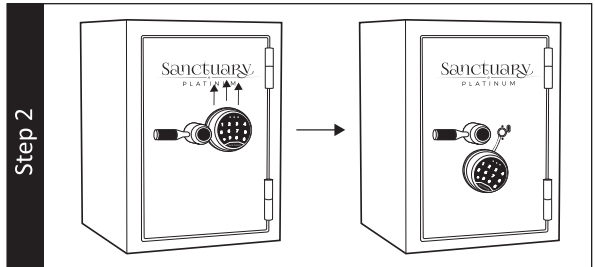
- Make sure to inspect your vaulty for shipping damage as soon as you receive it. If you find any damage, please contact the delivery company (or carrier) immediately
- Any damage not noted upon delivery must be reported within fifteen (15) days or there will be no recourse. Any noted damage at the time of delivery must be resolved with the delivery company and/or retailer. Shipping damage is not warrantable by SA Products.

4. OPENING YOUR VAULT

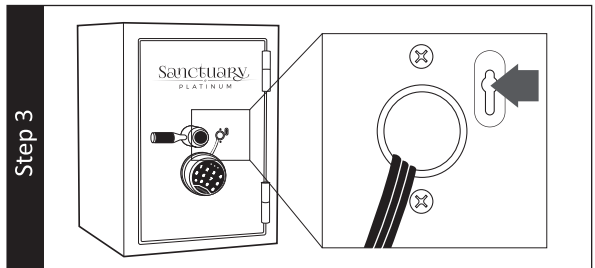
1. Locate the override keys inside the plastic bag hanging from the front of the vault.



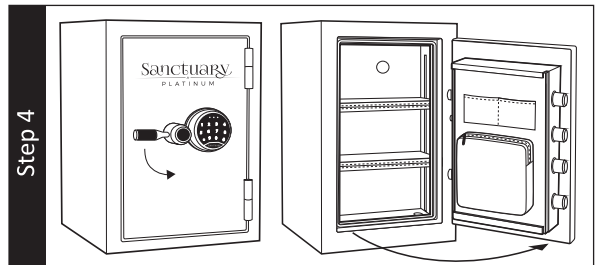
2. Gently remove the E-Lock from the vault by sliding the entire unit upwards, until the keypad detaches from the two mounting screws on the door of the vault. Allow the keypad to gently hang from the wires.



3. Locate the circular keyhole in the door of the vault. Insert and turn the key from the 12 to 3 position.

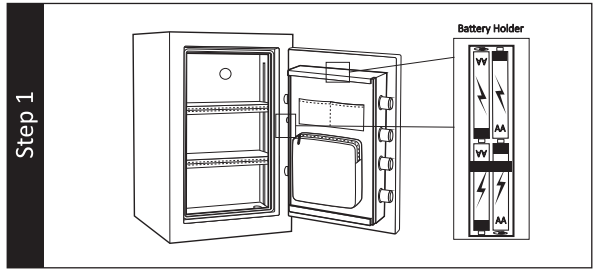


4. Turn the handle counter-clockwise until the vault door opens. Turn handle clockwise to activate bolts and keep door open.

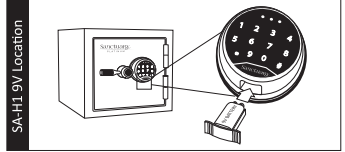


5. E-LOCK BATTERY INSTALLATION

1. The E-Lock requires 4 x AA alkaline batteries. Locate the battery compartment on the inside of the door panel. Insert the batteries in the proper orientation and order. Keypad will beep when batteries are successfully installed. Replace battery cover.

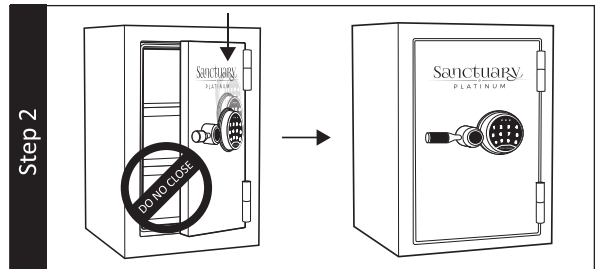


The Illuminated E-Lock requires 1 x 9V alkaline battery located in the slide out tray on the bottom side of the lock face. Insert the battery in the proper orientation and order. Reinsert battery with tray.



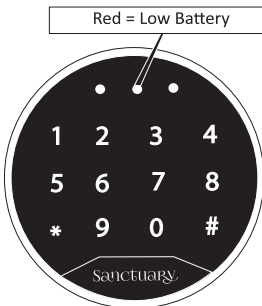
WARNING: The batteries must be inserted with the correct polarity. Exhausted batteries must be removed from the product and discarded safely. Do not mix old and new batteries. Do not mix alkaline or standard (carbon – zinc) batteries. Do not use rechargeable (nickel – cadmium) batteries.

2. With the vault remaining open, Replace the E-Lock onto the vault door by aligning the lock face to the mounting screws and slide downward until you feel a noticeable click or physical stop.



3. If the E-Lock is too loose or tight when properly installed onto the safe door, the E-Lock mounting screws can be adjusted by tightening or loosening them.

6. LOW BATTERY WARNING

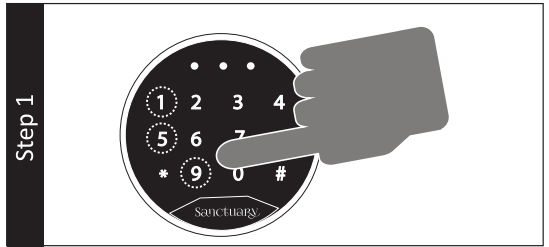


- This E-Lock is equipped to alert you when the batteries are low by illuminating the red light (center) on the keypad when any button is pressed.
- Always test the batteries when installing or replacing. If the red light comes on when a button is pressed you know the batteries are not fully charged.

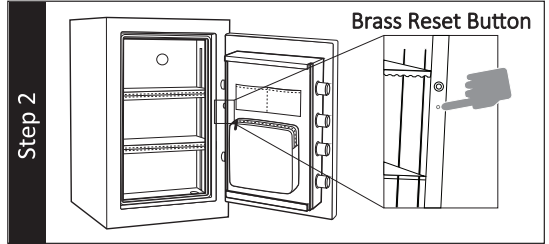
7. E-LOCK SECURITY CODE SETUP

Important: It is necessary to re-program your safe with a new security code you have personally selected to provide maximum household security. Be careful, in choosing your new security code, you'll want to be sure that you can operate the unit quickly without making an error.

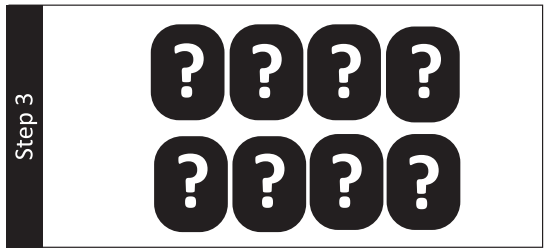
- 1. Key in the preset factory code [1 5 9 #]. The left light will turn green. Turn the handle to ensure bolts are activated. Once confirmed, return handle to starting position to lock bolts out.



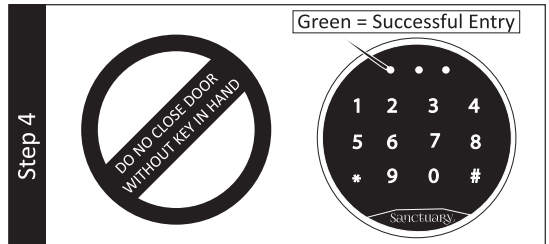
- 2. On the inside of the vault, locate the small brass cap. Unscrew and remove the cap, you will now see the reset button. Press and release the reset button. You will hear a beep. The yellow (right) light on the E-lock will illuminate so that you can enter your new code.



- 3. Enter your new 3 to 8 digit security code while the yellow (right LED) light is illuminated followed by the [*] symbol. Keypad will beep twice after pressing the [*] symbol. Reenter new code, now followed by the [#] symbol. The Keypad will flash yellow (right LED), beep twice, then flash green (left LED).



- 4. While the vault door is still open, Confirm your newly entered security code by entering the 3-8 digit code followed by the [#]. If succesful you will hear two beeps and the green light will illuminate, allowing you to retract the bolts.



E-LOCK SECURITY CODE SETUP (continued)

Note: Do not shut the vault door until you have confirmed your new security code at least 3 times to ensure your code has been saved and you can open the door successfully. If the code fails, the yellow light (right) will flash & beep. Repeat the steps above until successful.

Warning: If the incorrect security code is entered 3 times you will have an automatic lockout for 20 seconds before you can enter your code again. If 3 additional failed attempts are made, the keypad will lockout for 10 minutes. Leave batteries in to go through lockout cycle. If batteries are removed timer will restart at zero

8. LOCKED OUT OF YOUR VAULT

In the event you have forgotten the security code your primary action will be to use your backup keys in order to gain access to your vault and follow the E-Lock Security Setup Code instructions, starting at step 2 of activating the brass reset button.

If you have lost your backup keys, you will need to contact customer service at the number below. Proof of purchase is required to obtain keys.

SA Products Customer Service - (888) 792-4264

9. ANTI THEFT ALERT ALARM SYSTEM



- By activating the theft alert alarm system, if the vault is tampered with, the alarm will sound for 20 seconds.
- To stop the alarm from sounding, enter your security code or use the override key to open the vault and remove the batteries.

1. Activation: Press [* 0 0] to activate the theft alert alarm system after vault is locked.
2. Every time a correct security code is entered the alarm is de-activated. To re activate press [* 0 0].

10. E-LOCK QUIET MODE



- By activating the E-lock quiet mode, the vault will no longer make audible sound when interacting with vault, allow for silent access.

1. To mute the E-Lock, enter the code [* 6 3 3].
2. To turn the sound back on, enter code [* 6 6].

11. PROPER PLACEMENT AND MOVING OF VAULT

WARNING: VAULTS ARE VERY HEAVY AND AWKWARD TO HANDLE . PLEASE USE THE UTMOST CARE IN MOVING THE VAULT. UTILIZING A TRAINED PROFESSIONAL WITH PROPER MOVING EQUIPMENT IS HIGHLY RECOMMENDED.

The location of the vault is very important and the utmost care should be taken during this consideration.

1. To maximize the fire protection of your vault, we recommend you place the vault in lower levels in your home where fire temperatures are lower and away from highly combustible materials.
2. To maximize burglary protection and stability, securing the vault to the floor is recommended.
3. SA Consumer Products recommends that you store your vault in a closet, office, basement, bedroom or any other location that is convenient for you but out of direct line of sight from prying eyes. The location of the vault is very important.

Using a dolly capable of supporting the size and weight of your vault, move the vault to your desired location. Please take all necessary precautions to protect and prevent any damage to your flooring.

HELPFUL: TO DETERMINE WHETHER YOUR VAULT WILL MAKE IT THROUGH DOORWAYS, STAIRS OR CORNERS TAKE THE EMPTY SAFE BOX AND SEE IF IT WILL FIT ALL THE WAY THROUGH TO ITS FINAL LOCATION.

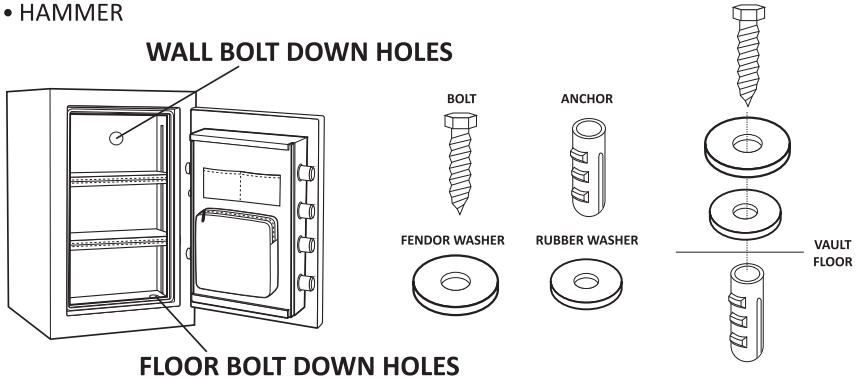
1. The vault should be installed adjacent to a side wall with minimal space on either side of the vault. Wherever possible, the vault should be flat against the wall and floor. Remove the baseboard and/or wall trim if necessary.
2. Always ensure the vault is in an isolated and dry area. Never place the vault in direct contact with a wet floor. When installing your vault on a concrete floor, use of a moisture/protective barrier is highly recommended. Failure to do so, or exposing the vault to chemicals or other adverse environments, may void the warranty.
3. If your vault seems unlevel, you may need to shim the bottom of the vault to prevent the door from swinging open too quickly, or closing on itself.

12. SECURING YOUR VAULT

WARNING: YOUR VAULT IS DESIGNED TO SUPPORT ITSELF WHEN THE DOOR IS OPENED. HOWEVER, CAUTION SHOULD BE USED TO AVOID TIPPING AND SAFETY HAZARDS. THE VAULT MUST BE SECURED TO THE FLOOR OR WALL. FAILURE TO DO SO WILL COMPROMISE THE SAFETY AND SECURITY OF THE VAULT.

TOOLS NEEDED TO BOLT VAULT TO A CONCRETE SURFACE

- DRILL / HAMMER DRILL
- DRILL BIT – 1/2" (for installing into concrete with provided hardware)
- WRENCH / 11/16" (17MM) SOCKET
- HAMMER



1. Use the hardware provided or consult your hardware retailer for fastening hardware for your particular mounting surface.
2. Open your vault door and locate and remove the four black caps on the vault floor and wall. This will provide access to the factory drilled bolt down holes.
3. To secure your vault to the floor or wall it will first be necessary to drill pilot holes in the floor or wall surface.
4. Drill the appropriate diameter and depth of pilot holes based on the type of hardware being used and the type of floor surface. For the hardware provided (concrete floor installation) we recommend using a hammer drill and 1/2" concrete drill bit to drill holes the four corresponding holes in the concrete floor.
5. Insert and drive the plastic anchoring plugs into the pilot holes. You may need to use a hammer to fully insert the plugs into the pilot holes.
6. Secure the vault, by threading all 4 anchor bolts through the factory drilled bolt down holes in the bottom of the vault and ratcheting down tight.
 - Make sure the metal washer sits on top of the rubber washer. Tighten the bolt to compress the rubber washer between the vault and metal washer. Failure to do so, will allow water to enter the vault in the event of a flood.
7. Replace the four black caps onto the floor of the vault.

13. LOADING YOUR VAULT

1. Store documents or heat sensitive items in the bottom of the vault for greatest protection against fire damage.
2. Store ammunition separately from valuables.
3. Do not put anything in your vault that will put pressure against the door when it is closed.
4. As a good safety precaution store heavier items either on the floor of the safe or away from the middle of the shelves.

14. KEEPING YOUR VAULT DRY

We recommend placing a moisture/protective barrier between your vault and concrete floor to prevent any moisture, mildew and rust damage the vault. Installing your vault in a place with climate control (heat in the winter and cooling in the summer) is highly recommended. In areas of high humidity or frequent temperature fluctuations (garages) it is recommend to take appropriate precautions to ward against moisture damage. We strongly encourage the use an internal dehumidifier and/or desiccants to protect your contents from rust or mildew. Internal dehumidifiers should not be in direct contact with the side or back walls.

15. MAINTAINING HINGES AND INTERNAL MECHANISMS

The hinges and internal locking mechanism are permanently lubricated, thus needing no maintenance. Opening the door panel of your vault may void your warranty. Always consult our customer service experts prior to doing so.