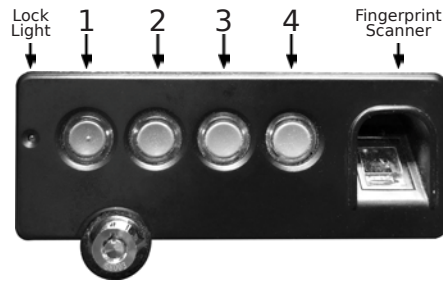


Stealth

Lock Instructions

MODEL: STL-HHS-BIO



Your Electronic Lock is currently set with the default combination of:
1-2-3-4-1-2

OPEN:

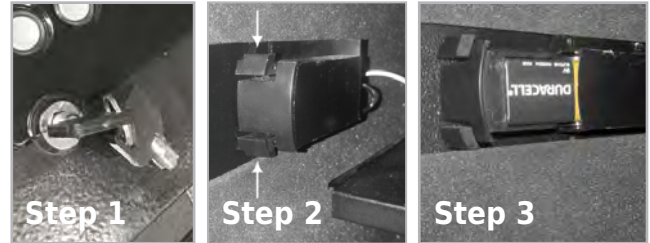
Step 1: Twist key LEFT (counter-clockwise) to open door



INSERT BATTERY:

Step 2: Pinch tabs together and slide out battery compartment

Step 3: Insert a 9V battery into battery compartment & slide battery compartment back into place



CHANGE YOUR COMBINATION:

Step 4: Hold down button 1 until green light turns on and lock beeps 2 times

Step 5: Enter your current 6 digit combination - lock will beep 2 times

- Factory default is 1-2-3-4-1-2

Step 6: Enter your new 6 digit combination - lock will beep 3 times

Step 7: Reenter your new 6 digit combination - lock will chime

Your new combination is now installed.

*If lock beeps 5 times, combination was not installed successfully. Restart from Step 4.

IMPORTANT! Test your new combination several times with the door open to ensure new combination is properly set before closing and locking safe.

RECORD NEW COMBINATION HERE:

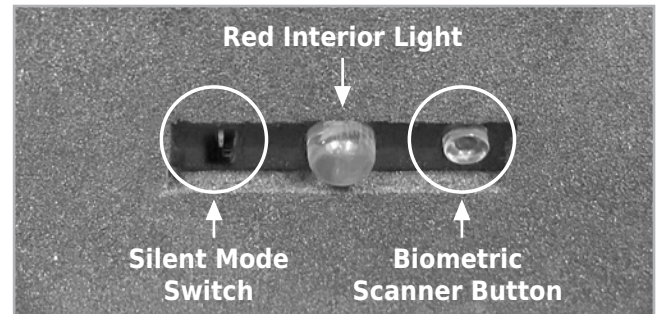
BIOMETRIC SCANNER:

Step 8: Press ONCE (do NOT hold) biometric scanner button - lock will beep 2 times/lock light and finger scanner will illuminate green

Step 9: Position finger fully on biometric scanner - hold until lock chimes

Fingerprint installed successfully.

*If lock beeps 5 times, lock light flashes red, and fingerprint scanner stays green, fingerprint was not installed successfully. Restart from Step 8.



SILENT MODE:

Use switch next to interior light to turn silent mode on or off.

BATTERY LIFE:

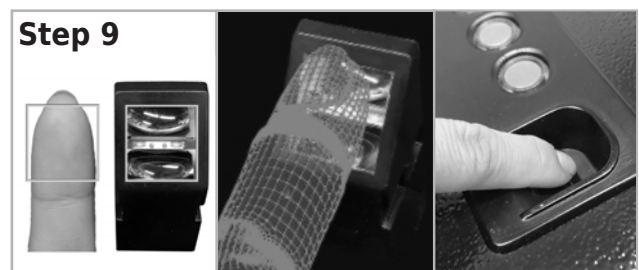
If you see a continuous red light on, replace battery

OPERATING INFORMATION:

- Lock will go into standby after 10 seconds of inactivity
- Lock will freeze for 5 minutes after 5 wrong combination attempts

RESET LOCK:

- Hold down biometric scanner button until lock beeps 5 times
- Lock will reset to factory combination of 1-2-3-4-1-2 and erase all registered fingerprints



Scanner can register up to 31 fingerprints

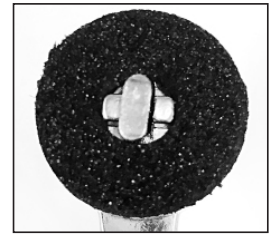
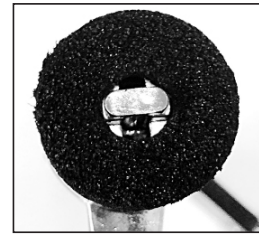


Handgun Hanger Safe Security Cable Instructions



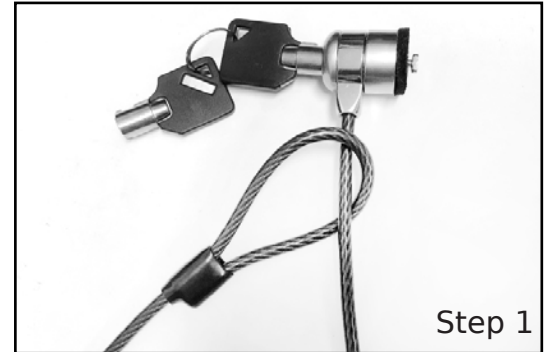
Unlocked

Locked



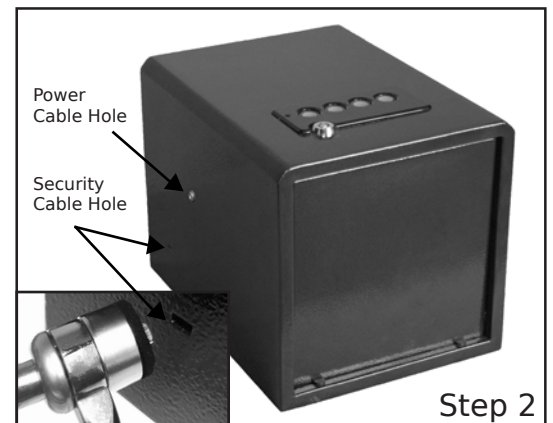
Key will only release while locked.

Step 1: Wrap cable around a secure object and insert lock through the loop on the other end of the cable.



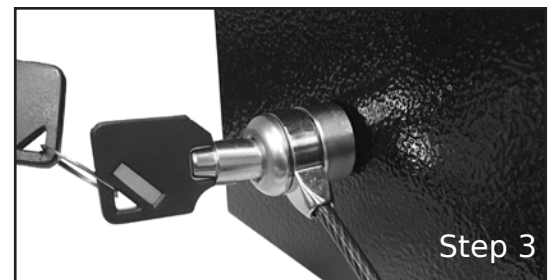
Step 2: Make sure bolt is in unlocked position. Insert locking bolt into hole located at the rear of the safe.

Step 3: Twist key to the RIGHT (clockwise) to lock cable in place. Remove key.



Your security cable is now installed.

***To unhook cable, insert key and twist to the LEFT (counter-clockwise). Remove lock.**



Power Cable Installation



To install power cable, simply insert cord into the power cable hole and plug into an outlet.

