

RMM3124ESLAudit

2-Door Depository Safe with ESLAudit Access Control System



SAFE FEATURES:

- Extra large storage compartment for cash tills, cash box, cash bag and bulk coin.
- Comes standard with 9 door mounted coin racks.
- Extra large deposit compartment with anti-fish rotary hopper.
- LED light with motion sensor make it easy to see inside both the rotary hopper and deposit compartment.
- ½" thick solid steel doors
- Formed high tensile steel body
- Both doors auto lock when closed
- Built-in alarm contacts on both doors
- Four anchor bolt holes
- ESLAudit lock offers:
 - Controls both doors
 - Easy to read back-lit display
 - Audits all safe functions
 - Time Delay and Time lock on both doors
 - Courier bypass
 - A/C power with battery back-up
 - Auto daylight savings adjustment
 - English and Spanish options

Model	Description	Inside Dimension H x W x D	Outside Dimension H x W x D	Clear Door H x W	Wt.
RMM3124ESLAudit	2D Depository Safe w/ESLAudit with AC Power Supply	Left - 30 ¾" x 15-⅞" x 17-⅜" Right - 24 ½" x 8 ¾" x 17-⅜"	31" x 24 ½" x 20"	Left-28" x 13 ½" Right-12-⅝" x 5 ¾"	360



ESLAudit

Electronic Lock

Every business, large or small, can benefit from an easy to use safe access control system. **AMSEC'S ESL AUDIT ELECTRONIC LOCK** makes it easy to manage safe access with its integrated USB Port and user-friendly PC application. Download lock settings, Upload lock settings, Download audit trail, Upload software upgrades and More! In addition, all functions can be securely shared via email.

SECURITY

- All components communicate through an encrypted network
- Supports dual control and armored car pickups
- Supports time delay as a deterrent to robberies
- Supports time lock restricted access to defined operating hours
- Supports alarm output or duress alarm
- 2,000-record audit trail
- Supports up to 40 users, each of whom can have unique privileges

PIN code and/or electronic keys for user authentication

Optional door sensor detects if door is left open

Back-up database secured inside of safe

FLEXIBILITY

- Retrofits most mechanical or electronic locks
- 3 unique lock designs
- Controls 1 or 2 doors
- Safe doors can be configured in an inner/outer door configuration

Authentication options: PIN and/or AMSEC e-Key

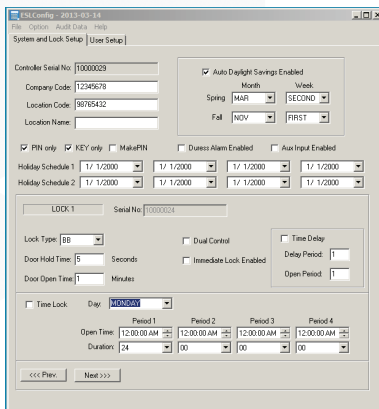
9-volt battery and optional AC power

Optional remote time delay indicator

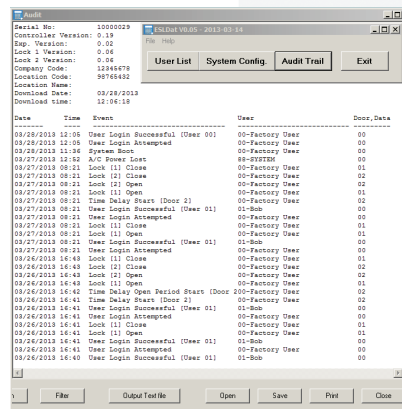
Update firmware via USB port

POWERFUL PC APPLICATION

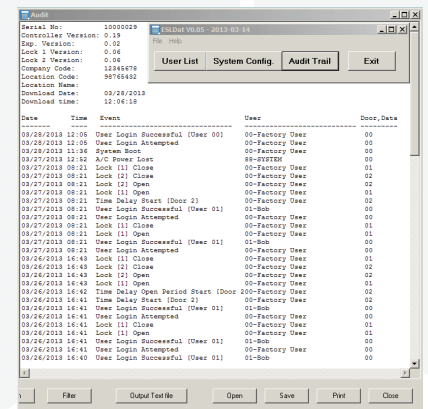
- Manage users
- View and store audit trails
- Manage system configuration
- Manage door settings



Admin Screen



Audit Screen



User Screen