

Front

4.5 in

Lever Installation Guide

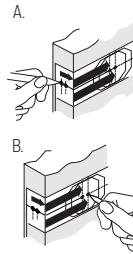
ENGLISH

Digital Deadbolt Combo with Lever
Model # 8734305 8734505

1. Mark Door

A. Start 36" from floor. Fold and apply template to high edge of door.

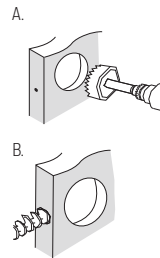
B. Mark center hole on door face through guide on template for 2-3/8" (60 mm) or 2-3/4" (70 mm) backset.



2. Drill Holes

A. Drill 2-1/8" hole through door face as marked for lock set.

B. Drill 1" hole in center of door edge for latch.

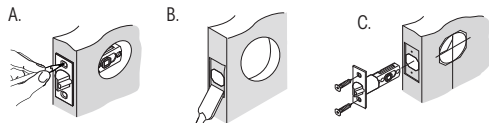


3. Install Latch & Select Backset

A. Insert latch in hole keeping it parallel to face of door. Mark outline and remove latch.

B. Chisel 1/8" deep or until latch face is flush with door edge.

C. Insert latch and tighten screws.



Back

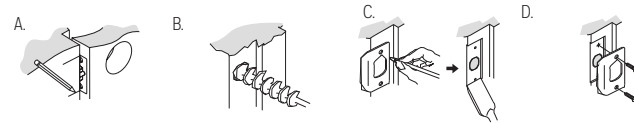
4. Install Strike

A. Mark template from edge of jamb and locate strike opening.

B. Drill 1" hole 1/2" deep in door jamb on center line of screws.

C. Outline outside edges of strike. Chisel 1/6" deep for strike or until flush.

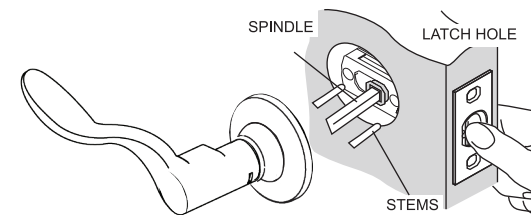
D. Install strike and tighten screws.



5. Install Exterior Mechanism

A. Insert lever with spindle into latch making certain that stems are positioned correctly through latch holes. Press flush against door.

B. Install interior lever and secure with supplied screws.



INS8734305 8734505 17401 E V0

4.5 in