

# Skull & Bones Inlay Kit Instructions

## Kit components

- 1: 1 x Barrel with laser cutout
- 2: Skull & Bone cutout Pieces



### Step 1:

Remove all components from the plastic bag and place on a clean work surface. Please note that the components are small and you can lose them quite easily.

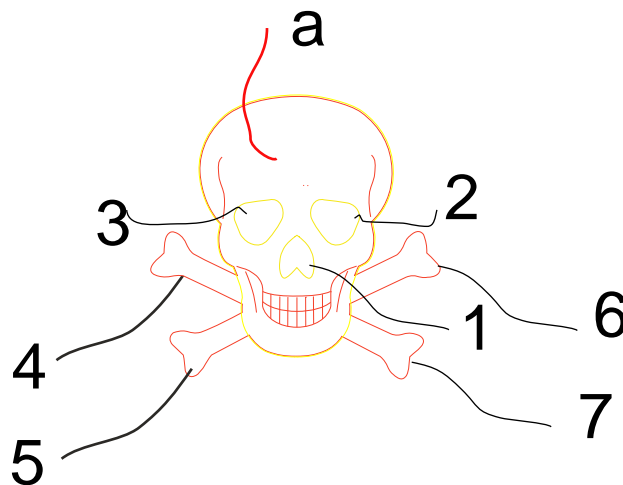
### Step 2:

Take the barrel with the laser cutout and slide the brass tube(27/64) into it. **Please do not use any glue** at this stage, this is only to assist you with the assembly process.

### Step 3:

Take the Barrel with cutout and place the Main part (**a**) first. It is important to place the pieces in a specified order. Follow with Piece nr **1, 2, 3, 4, 5, 6 & 7**.

Apply a small amount of thin CA glue so it would stick to the main barrel. You can use CA accelerator to speed up the curing of the CA glue.



Pieces get placed in the order that they are numbered.

## Step 5

Remove the brass tube and put a small drop of thin CA on each inserted part. Try to keep the CA glue to the edges of the inlaid pieces so you can fill the laser cut lines with dark wood dust for contrast before you finish the pen.

## Step 7

Now you can trim / cut / sand the barrel to size and glue the brass tube into the barrel with a glue of your choice and please give it enough time to dry before turning the barrel into shape. Try to sand the barrel round and smooth before you use a skew or any other tool to finish your pen.