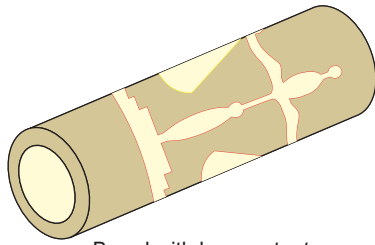


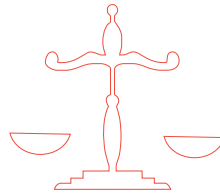
# Scale of Justice Inlay Kit Instructions

## Kit components

- 1: 1 x Barrel with laser cutout
- 2: 3 x Black Laser cut inlay pieces
- 3: 2 x White holly Triangular pieces( Might still be attached to the Barrel)



Barrel with laser cutout



Laser cut inlay pieces



Triangular pieces

### Step 1:

Remove all components from the plastic bag and place on a clean work surface. Please note that the components are small and you can loose them quite easily.

### Step 2:

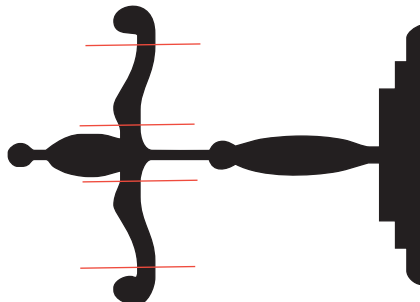
Take the barrel with the laser cutout and slide the brass tube(27/64) into it. **Please do not use any glue** at this stage, this is only to assist you with the assembly process.

### Step 3:

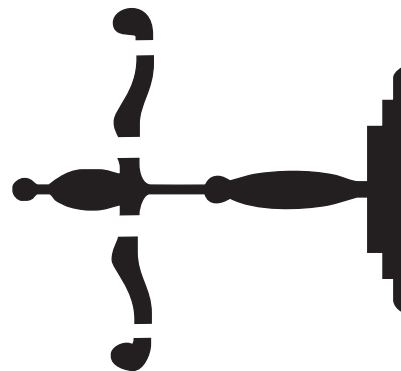
Take the scale cutout and place and break the scale arms off as per [illustration 1](#). Place the scale into place the opening with the bottom part going in first, now you can place small broken pieces into the openings. You can use a small object to push the pieces into position but do not use force.

### Step 4:

Place the half round pieces and then follow with the triangular pieces.



Red lines indicate where to break the scale



This is what the scale should look like before you start assembly.

Illustration 1

## Step 5

Remove the brass tube and put a small drop of thin CA on each inserted part. Try to keep the CA glue to the edges of the inlayed pieces so you can fill the laser cut lines with dark wood dust for contrast before you finish the pen.

## Step 6

Cut the barrel to length but **do not use a Barrel trimmer** it will destroy/break the barrel and all your hard work. Use a disk sander or any other method that will not destroy your blank. Now you can glue the brass tube into place with a glue of your choice and let it dry completely before turning the blank.

It is important to sand the barrel smooth before you are going to use a skew or any other turning tools.

For Technical Support please contact - Constant Laubscher 770- 891 2301 or Email [support@lazerlinez.com](mailto:support@lazerlinez.com)