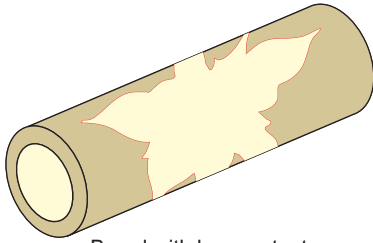


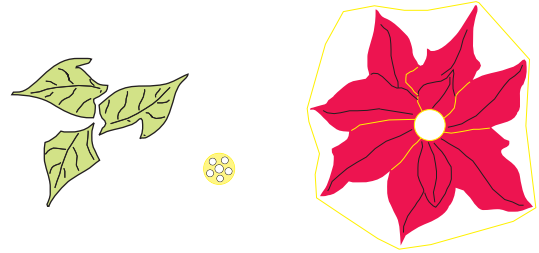
# Poinsettia Flower Kit instructions

## Kit components

- 1 x White Holly Barrel with cutout
- 1 x Red flower
- 3 x Green leaves
- 1 x Yellow round piece



Barrel with laser cutout



Poinsettia inlay Pieces

### Step 1:

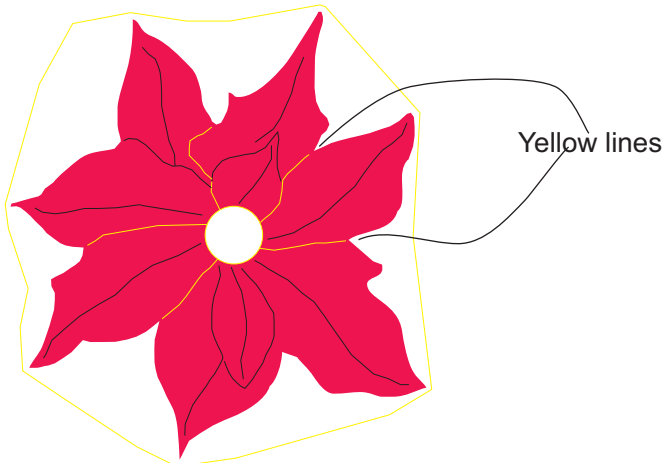
Remove all components from the plastic bag and place on a clean work surface. Please note that the components are small and you can lose them quite easily. The parts are also fragile and should be handled with care.

### Step 2:

Take the barrel with the laser cutout and slide the brass tube(27/64) into it. **Please do not use any glue** at this stage, this is only to assist you with the assembly process.

### Step 3:

Take the Flower inlay and break it into five( 5) pieces (see the Yellow lines) as per illustration.



Barrel with laser cutout

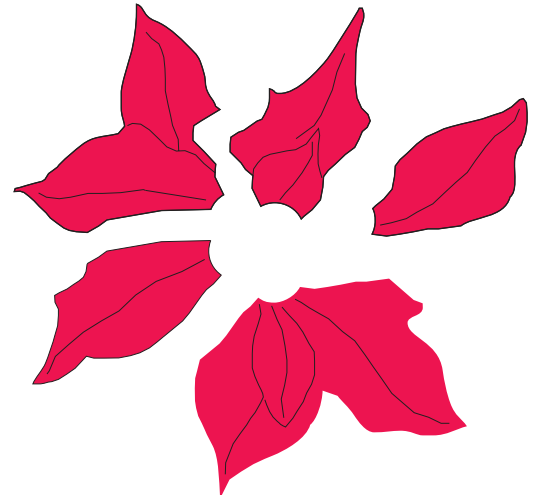


Illustration 1

## Step 4:

Now Take the flower pieces and place them into the opening in the barrel so it would look like **illustration 2**. It might be advantages to fit the bigger pieces first.

Next you can place the green leaves in their corresponding openings. **Illustration 3**

Take the Yellow round insert with the small holes and place it in the center of the flower. **Illustration 4**

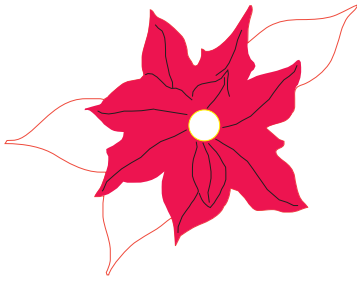


Illustration 2

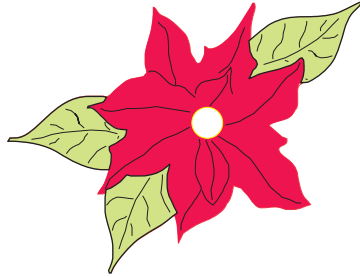


Illustration 3

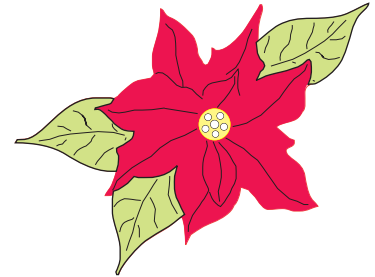


Illustration 4

## Step 5:

After all the inlay pieces are in place **REMOVE THE BRASS TUBE** from the barrel and then use small amounts of thin CA glue to secure all the pieces into place. Please **do not** soak the whole inlay with thin CA, try to keep the glue to the outer edges of each inlay piece and not in the laser detail lines which will be filled with black dust while turning and finishing the pen.

## Step 6:

Cut the barrel to length but **do not use a Barrel trimmer** it will destroy/break the barrel and all your hard work. Use a disk sander or any other method that will not destroy your blank. Now you can glue the brass tube into place with a glue of your choice and let it dry completely before turning the blank.

It is important to sand the barrel smooth before you are going to use a skew or any other turning tools.

After the barrel is sanded smooth blow the sanding dust out of the laser detail lines and rub some black/dark wood dust into those detail lines and the center piece of the flower.

Use thin CA glue to secure all pieces into place before turning the barrel to size.

While turning the barrel to size you will notice that some of the laser detail lines will need some more dust filling just repeat filling it with dust and cover with thin CA and continue turning.