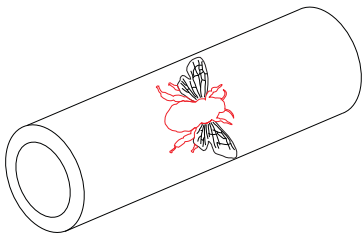


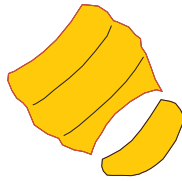
Bumble bee Inlay Kit Instructions

Kit components

- 1: 1 x Maple or Holly Stabilized Barrel with laser cutout
- 2: 2 x Yellow Stabilized Wood Inlays
- 3: 11 x small black inlay pieces



Barrel with laser cutout and pieces



Yellow inlay piece



Glock laser Inlay Small black inlay pieces

Step 1:

Remove all components from the plastic bag and place on a clean work surface. Please note that the components are small and you can loose them quite easily. The parts are also fragile and should be handled with care. Do not through anything away until the kit is completely assembled.

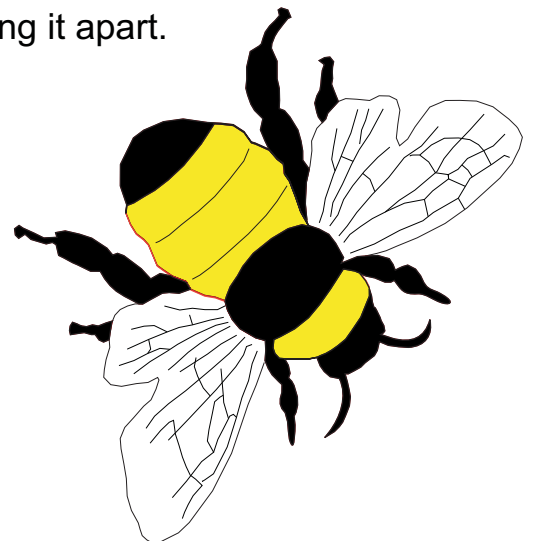
Step 2:

Take the barrel with the laser cutout and slide the brass tube(27/64) into it. **Please do not use any glue** at this stage, this is only to assist you with the assembly process.

Step 3:

Take the barrel and remove all the pieces from it, some pieces may have fallen out already. The pieces are very fragile so please be careful when breaking it apart.

Illustration Nr 1



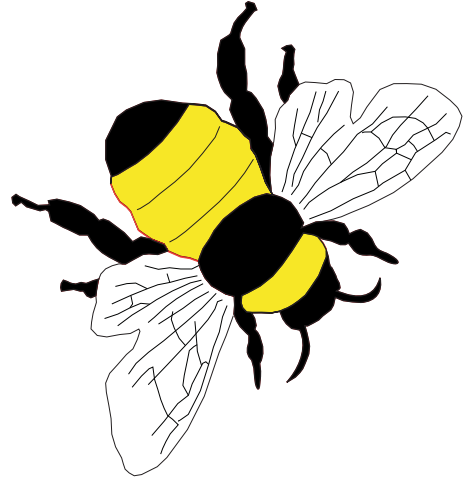
Step 4: Place a brass tube inside the wood barrel.

Place all of the small inlay pieces into their corresponding openings. Some of these pieces are very tiny, **DO NOT RUSH and LOOSE THEM!**

Assemble the pieces in the following order:

- 1: Insert all the yellow pieces.
- 2: Insert the black pieces

Some pieces might be more difficult to fit and you can dip the piece in warm water before placing it. Never force anything into place.



Once all the parts are in place you can use a small piece of wood/penblank to push it completely into position.

Step 5:

After all the inlay pieces are in place **REMOVE THE BRASS TUBE** from the barrel and then use small amounts of thin CA glue to secure all the pieces into place. Please **do not** soak the whole inlay with thin CA, try to keep the glue to the outer edges of each inlay piece and not in the laser detail lines which will be filled with black dust while turning and finishing the pen.

Step 6:

Cut the barrel to length but **do not use a Barrel trimmer** it will destroy/break the barrel and all your hard work. Use a disk sander or any other method that will not destroy your blank. Now you can glue the brass tube into place with a glue of your choice and let it dry completely before turning the blank.

It is important to sand the barrel smooth before you are going to use a skew or any other turning tools.

After the barrel is sanded smooth blow the sanding dust out of the laser detail lines and rub some black/dark wood dust into those detail lines. Use thin CA glue over the whole inlay to secure all pieces into place before turning the barrel to size.

While turning the barrel to size you will notice that some of the laser detail lines will need some more dust filling just repeat filling it with dust and cover with thin CA and continue turning.