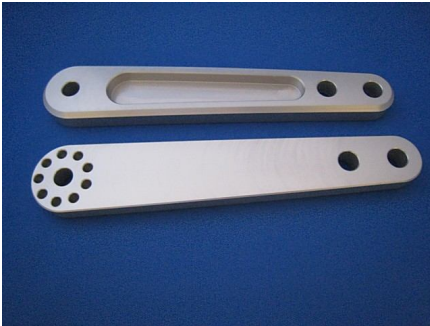


Kawasaki Versys Highway Pegs Mounts Installation Instructions Rev. B2

Thank you for purchasing our highway pegs mounts!

Items included in the kit



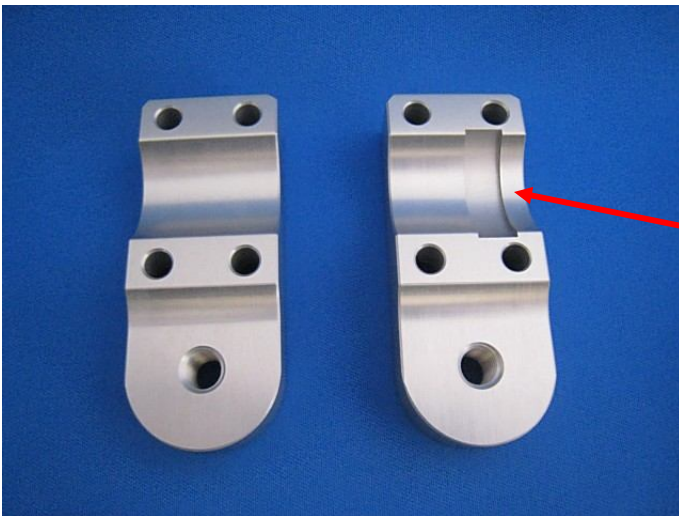
2 Mount Arms



2 Rear Clamps



Bolts and 2 Dowel Pins



Left Front Clamp
&

Right Front Clamp
has a **notch** cut-out

Tools needed for installation

- 5 mm Allen (hex) wrench from your motorcycle toolkit
- 6 mm Allen (hex) wrench from your motorcycle toolkit

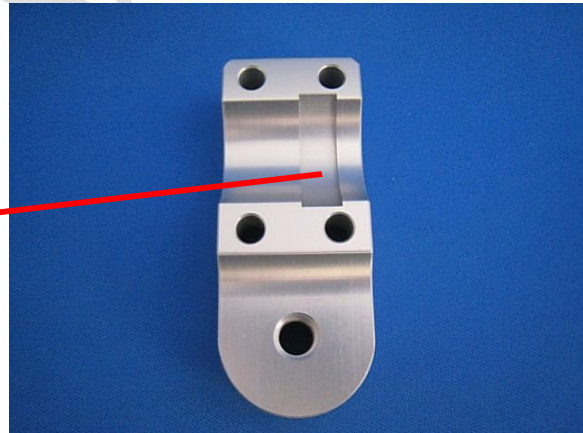
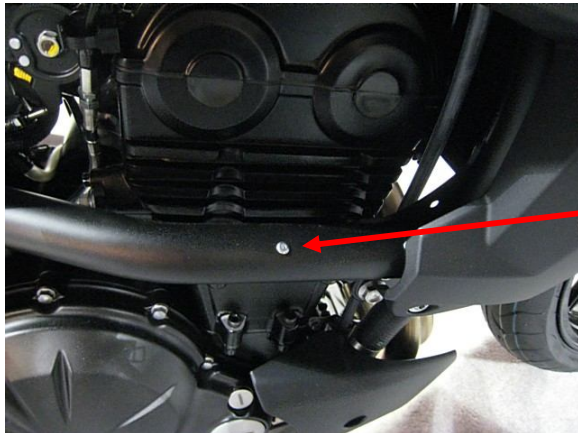
Installation Instructions

Right Side

- 1) Place Rear Clamp as shown and past the weld area on the frame's bar



- 2) Place the front Right Clamp so that the **notch** is aligned with the bar's rivet



- 3) Using a 5 mm Allen hex wrench, attach the **socket head cap screws**, starting with the two top ones, followed by the bottom two.



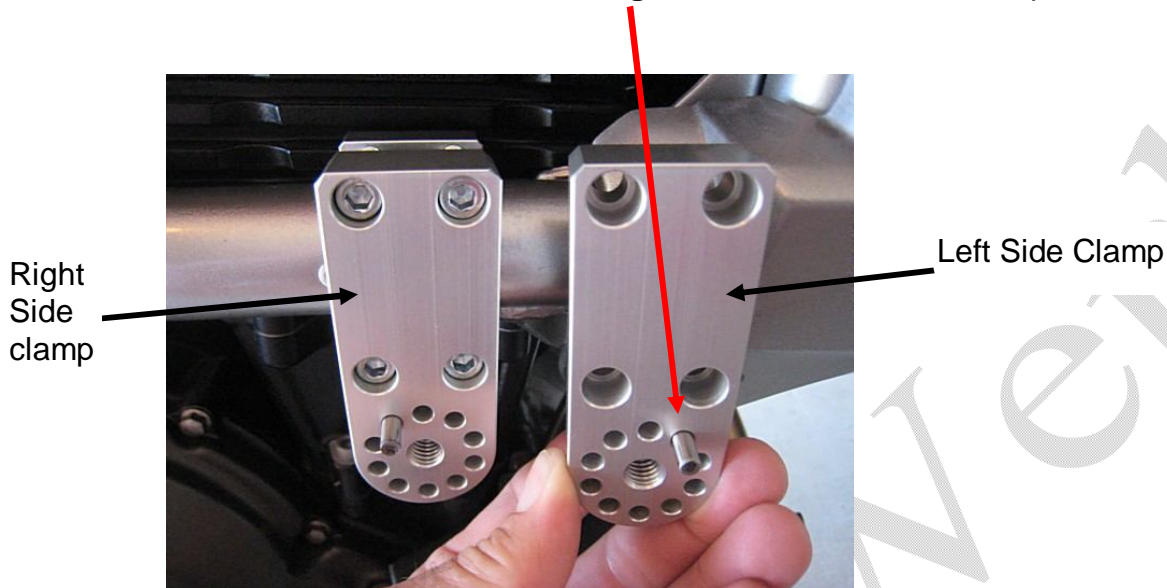
As you **lightly tighten the screws**, please ensure that the rear and front clamps are **parallel** to each other. **Do not tighten the screws all the way at this time!**

- 4) Insert a Dowel Pin in one of the front clamp's holes to reach an approximate desired location



- 5) If you want to change the angle of the mount's arm, just move the pin to a different hole. Experiment with the pin's hole location to find the most desirable position. By moving the pin from one hole to another, you can change the angle by as little as 4 degrees at the time.

After you are satisfied with the angle, memorize the position of the pin, so you can do the left side mount in the **mirror image** later on, as shown in the photo



- 6) Once you have established a pin location and a desired angle of the mount's arm, attach the arm to the front clamp. Use a 6 mm Allen hex wrench to tighten the provided button head screw



- 7) Now, tighten the top four socket head cap screws on the front and rear clamps.

Left Side

Repeat steps 1 – 7 for the right side. For tightening, please use an Allen hex wrench at medium strength, or if you have a torque wrench then tighten it at 25 N/m (2.5 kgf/m), (18 ft/lb). As always, we recommend that you use **Loctite Threadlocker** for the mounting screws.

Attach a highway peg of your choice to each mount. You can use a lower or a higher attachment hole, depending on your preference.

The installation is now complete.

