

Kawasaki ER-6 / Ninja 650R Passenger / Rear Lowering Foot Pegs Blocks Installation Instructions

Thank you for purchasing our Passenger Lowering Foot Pegs Blocks!

Items included



Left Block



Right Block



2 M-6 Screws & 2 Locknuts



6 Washers (2 sets of 3)

Tools needed for installation



From your garage toolbox (from left to right):

- Small flat screwdriver
- Open wrench 10 mm or adjustable wrench

From your Kawasaki Versys toolkit:

- Open wrench 10 mm / 12 mm

Additional preparation note

- **Please prepare the assembly area so that it is free of clutter, so if you drop the snap ring or the locking ball bearings, you can easily find them !!!**

Installation Instructions

Left Side

- 1) Wedge the retaining ring out with the small flat screwdriver, as shown:



- 2) Remove the pin as shown:



- 3) Get the **Left Lowering Block** and hold it in your hand. With the other hand, slide the foot peg together with its snap mechanism and the plastic washer out of the steel U-shaped bracket, as shown:



Please make sure **to hold and compress** everything together firmly, so the ball bearings and springs from the snap mechanism do not pop out while you do it!

- 4) Slide the whole foot peg mechanism into the Left Lowering Block as shown:



- 5) Reinstall the pin as shown:



- 6) Reinstall the retaining ring and snap it back in its place as shown with the screwdriver.

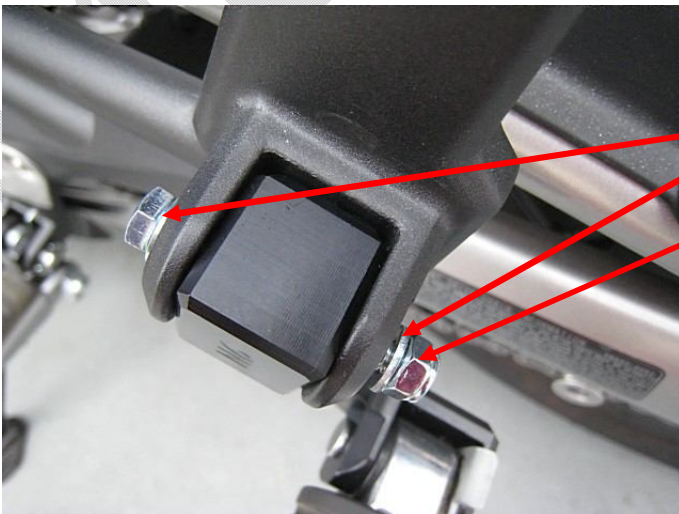


Install the washer as shown.

- 7) Slide the Left Foot Peg Block back in and insert the M-6 screw through the remaining 2 washers (on the outside), as shown:



- 8) Attach the M-6 Locknut and Screw both with 10 mm wrench as shown:



outside washers

locknut

- 9) Tighten both the M-6 Screw and the M-6 Locknut so that there is no slap, as shown:



Tighten the **M-6 Screw and Locknut** with the 10 mm open wrench at medium strength, or if you have a torque wrench then tighten it at 25 N/m (2.5 kgf/m), (18 ft/lb).

Please tighten a little bit at a time and check. Once the lowering block is not loose, do not tighten any more! Over-tightening may strip the screw.

- 10) The installation of the Left Lowering Block is now complete



- 11) Please repeat steps 1 through 9 to install the Right Lowering Block

