

IDENTIFIED COMPOUNDS

Identification	Column: BP5			Column: WAX			Molecular Class
	R.T.	R.I.	%	%	R.I.	R.T.	
Furfural	2.20	842	0.01	0.01	1381	5.49	Furan
Linalool	6.64	1107	0.01	0.01	1485	7.26	Monoterp. alcohol
Methyl salicylate	9.17	1199	0.02	0.03	1690	13.89	Phenolic ester
Chavicol	13.97	1303	0.08	0.12	2230	40.69	Phenylpropanoid
α -Cubebene	15.71	1329	0.04	0.03	1409	5.88	Sesquiterpene
α -Copaene	17.39	1355	0.16	0.14	1432	6.28	Sesquiterpene
Eugenol	18.48	1372	81.00	82.14	2055	35.38	Phenylpropanoid
β -Caryophyllene	20.50	1401	9.30	9.13	1524	8.04	Sesquiterpene
Methyleugenol	21.44	1413	0.02	0.02	1927	27.96	Phenylpropanoid
α -Humulene	23.11	1433	1.13	1.09	1579	9.68	Sesquiterpene
δ -Cadinene	28.93	1503	0.06	0.06	1671	13.07	Sesquiterpene
<i>trans</i> -Calamenene	29.34	1509	0.04	0.02	1735	15.88	Sesquiterpene
Eugenyl acetate	31.31	1536	6.90	6.67	2153	38.66	Phenylpropanoid ester
Caryophyllene oxide	33.53	1566	0.36	0.22	1849	22.67	Sesquiterp. ether
Total identified			99.13%	99.69%			

*: Two or more compounds are coeluting on this column

[xx]: Duplicate percentage due to coelutions, not taken account in the identified total

Note: no correction factor was applied

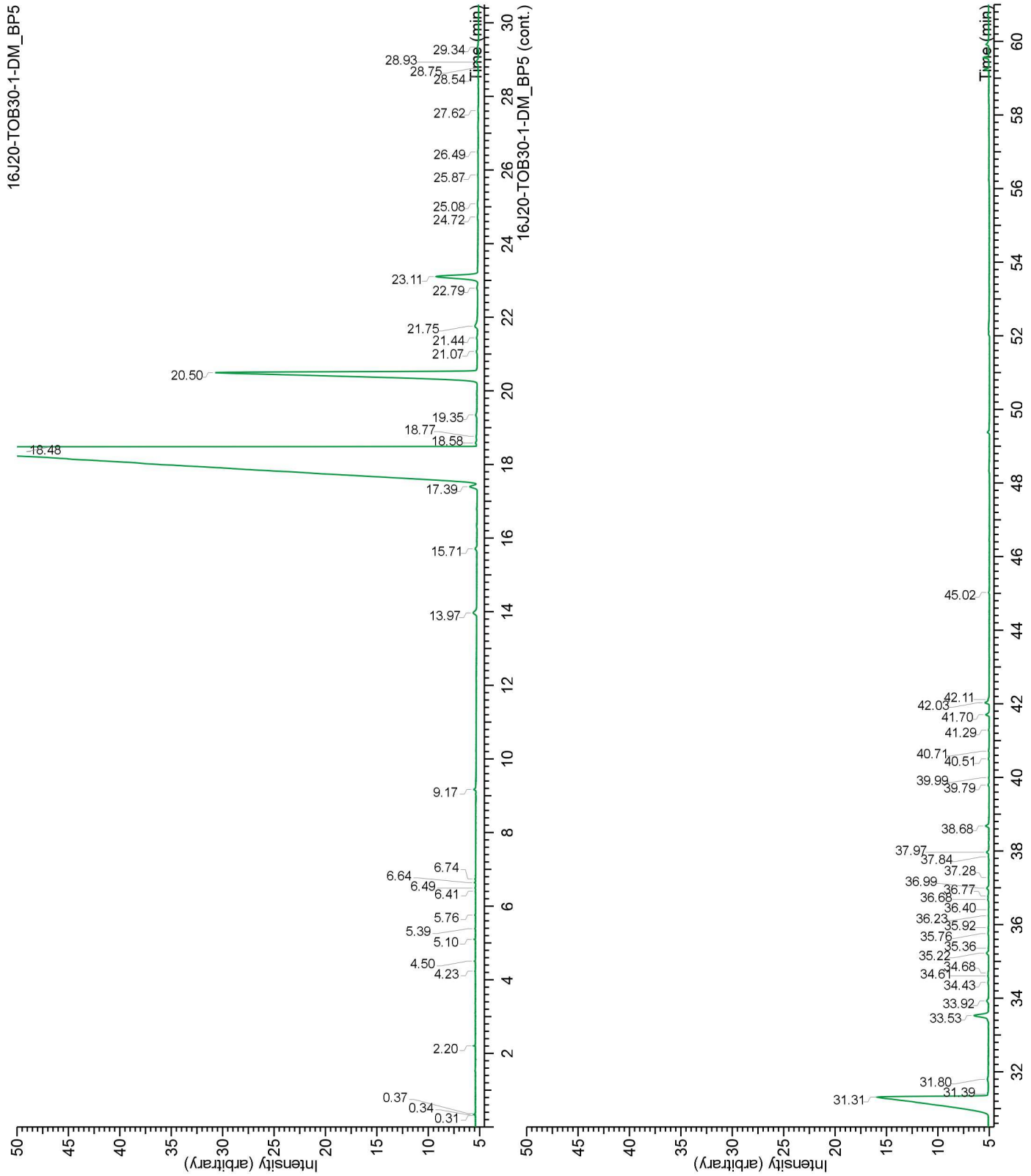
OTHER DATA

Physical aspect : Light yellow liquid

Refractive index : 1.5340 ± 0.0003 (20 °C)

CONCLUSION

No adulterant, contaminant or diluent were detected using this method.



16J20-TOB30-1-DM_WAX

