

Riptide

Pool Vacuum System

XP Model



Included Items

Vac Head

Battery Box

Short Impeller

Standard Bag

Instructions

800-735-3029
Sales@riptidevac.com

Understanding Filter Bag Options

There are several different bags available, the hole size in the cloth is measured in microns, the higher the number the larger the hole that is in the filtering cloth. Bags are available in 25,60,75,100,200 and 400 micron. There is also a heavy net bag available, the heavy net bag is the only one that will work for a pool with algae. It will be necessary to experiment with different bags to find the best one for your situation.

- **A finer bag will vacuum slower and plug easier.**
- **A plugged bag can't vacuum at all and will push debris away from the vacuum.**
- **Algae will plug all bags except the heavy duty net bag.**
- **Algae will need to be vacuumed to waste (with a pump) after removing the large debris with the heavy duty net bag.**

Available Bags:

GRAY RING Heavy Duty Net Bag (no filter cloth) (3/16 inch holes) This is the only bag that will work with algae, it removes the large debris and allows the algae and fine debris to pass through so it can easily be vacuumed to waste without clogging your vacuum hose with the leaves and large debris.

BLACK RING Coarse (400 Micron) Leaves and large debris.

YELLOW RING Medium (200 Micron) Leaves and general debris

ORANGE RING Standard (100 Micron) General debris and sand.

RED RING Fountain bag (100 Micron) This bag uses the same filter cloth as the standard bag but it is short enough that it won't drag on the floor of the pool when vacuuming in shallow water or when vacuuming large amounts of debris like sand.

GREEN RING Ultra Fine (75 Micron) Fine sand and granular particles.

BLUE RING Extreme Fine (60 Micron) Very fine particles, some pollen.

PURPLE RING (25 Micron) This is a true dust bag it will remove most pollen, black dirt, cement and other small particles. It may plug and need to be emptied even though it looks like there is very little debris in the bag.

Plugged Bag/Reduced Suction

Reduced suction occurs when a bag becomes clogged, in this scenario the bag will have a lot of pressure and appear hard. When the bag is clogged water can't pass through it so water moving into the vacuum head is reduced, when a bag becomes totally clogged water will be forced backward out through the intake so debris will be pushed away from the vacuum, when this occurs you either need to empty the bag and/or switch to a coarser bag.

Attaching/Removing a filter Bag

The bags are very easy to attach when done properly, if you don't find yourself attaching the bags effortlessly with the following instructions, please visit our website to view an instructional video.

Scan here to watch video

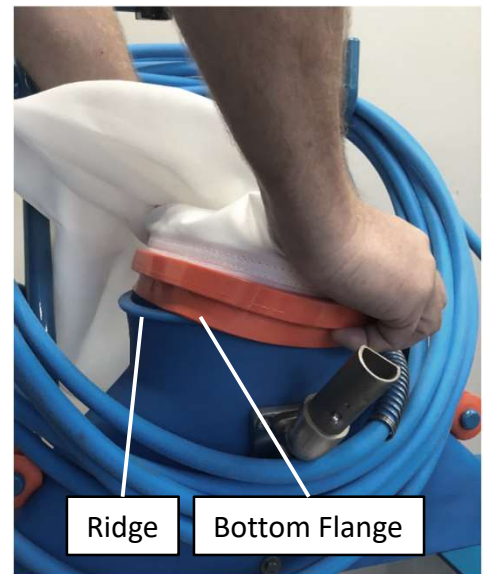
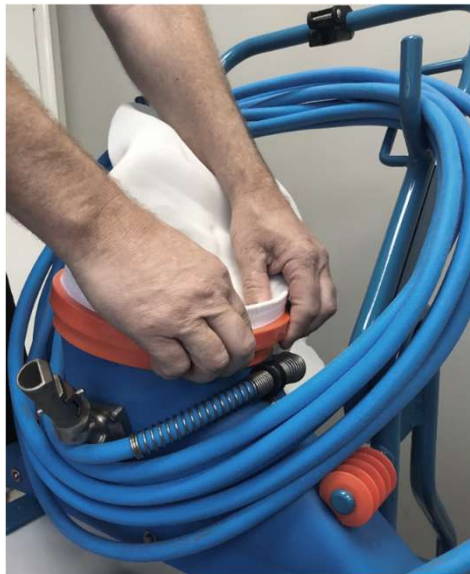
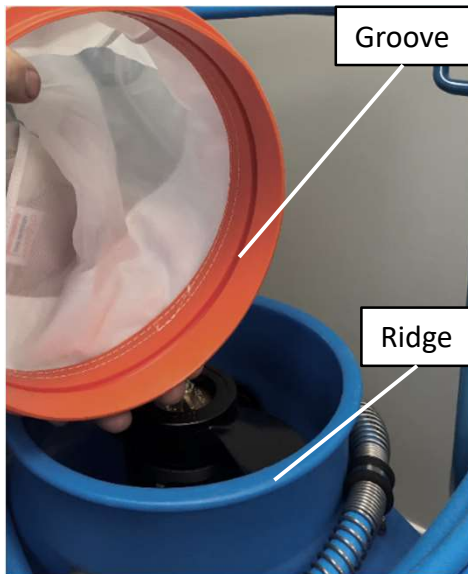


The groove in the bag ring snaps onto the ridge on the vacuum.

Note: Do not put the orange ring below the ridge.

Starting on the opposite side from where you are standing, snap the ridge into the groove.

Slide your hands back to the center of the ring and push down, this will bend the ring in the middle and the bottom flange will stretch over the ridge.



Keep pushing down until the bottom flange stretches over the ridge and snaps on.

PUSH DOWN ON CENTER OF RING.



Removing the bag

Put your two thumbs together and push on the top flange, place your fingers under the bottom flange and **TWIST THE FLANGE**, do not pull up, keep twisting the flange until the bag releases from the ridge on the vacuum head.

TWIST, DON'T PULL UP AND THE BAG WILL RELEASE.



Battery Selection

The following Battery fits perfectly into the battery box and can be purchased from Batteries Plus. Whatever battery you choose it must be a deep cycle which means it can be drawn down significantly and then recharged repeatedly. If you choose to use another brand of battery the measurements will be helpful to you.

Item Number: SLADC12-35J

Brand: Duracell Ultra

Voltage: 12

Format: BCI Group U1

Lead Acid Type: Deep Cycle

Capacity: 35AH

Chemistry: Lead Acid

Lead Acid Design: AGM

Product Category: Sealed Lead Acid

Terminal Type: J

Weight: 24.75 lbs

Length: 7.67 in

Width: 5.13 in

Height: 7.09 in

Battery Charger Selection

You will need a 12 volt automatic battery charger that will deliver at least 10 amps to the battery.
DO NOT USE A TRICKLE CHARGER. A trickle charger will not fully charge the battery over night.

Load Testing the Battery

We recommend that all Riptide users own a load tester. Fig 1

This simple tool will determine if your battery is good or bad within 10 seconds, it is the only test we know of that will give absolute and conclusive test results.

Check your battery anytime you feel your Riptide isn't functioning at full power.

This is the only tester that will be needed to determine if your battery is in good condition.

The one pictured is available on Amazon for \$22.

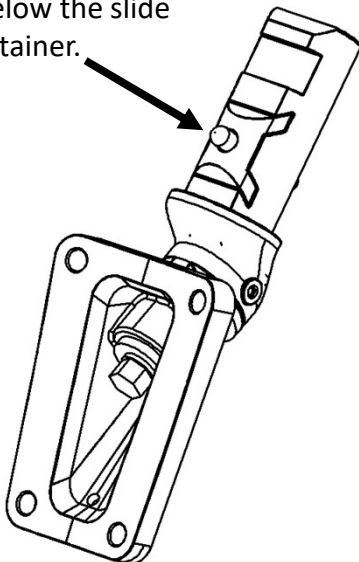
Fig 1



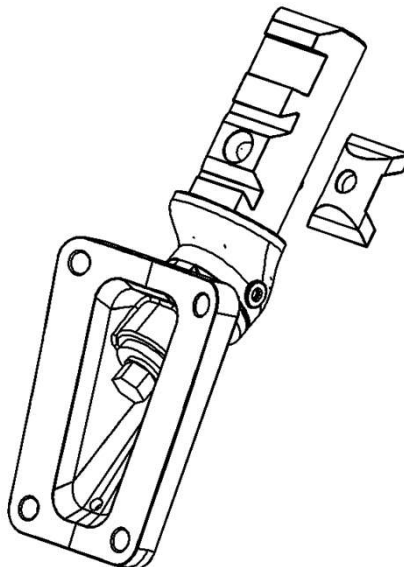
Steering Knuckle

Removing the pole pins for replacement

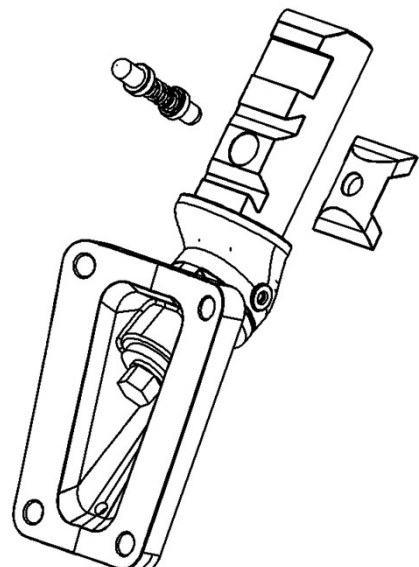
Use a tool (allen key, screw driver, etc.) to depress the button below the slide retainer.



Remove the slide retainer

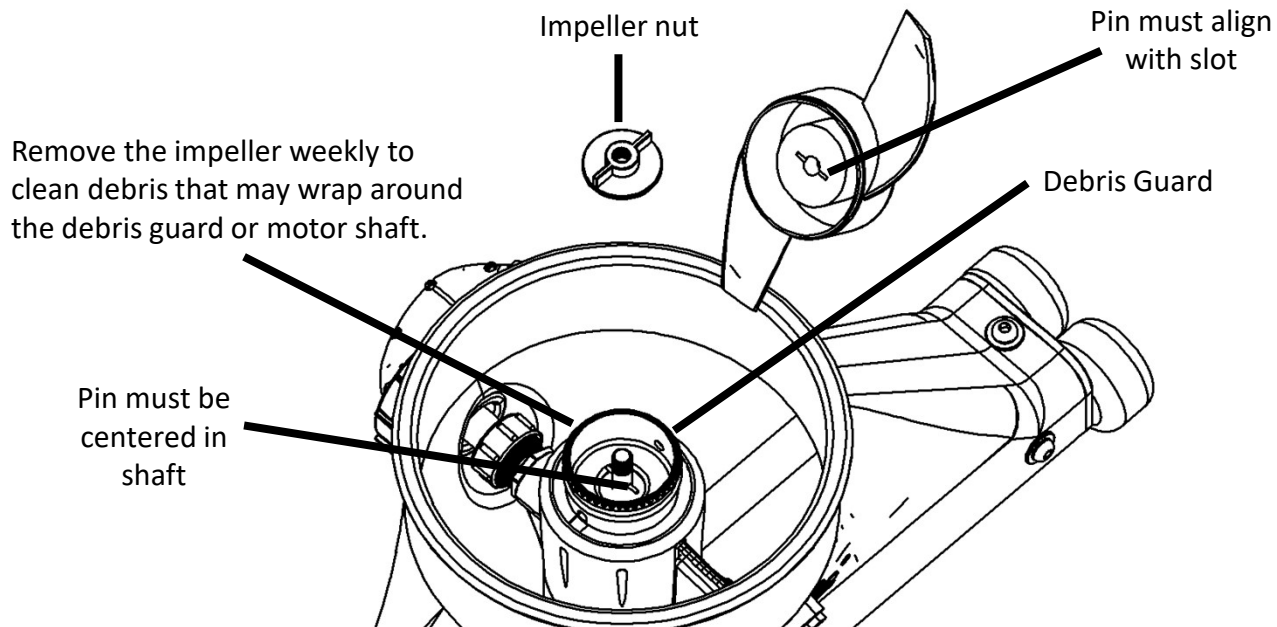


Remove the pole pins



Clean under the impeller

Your Riptide is equipped with our proprietary Debris Guard. The function of the Debris Guard is to protect the shaft seals of the motor which can be damaged from debris wrapping on the motor shaft. The impeller pin must be centered in the shaft and it must align with the slot in the impeller when the impeller is installed.



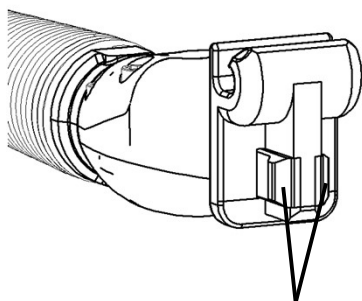
Cleaning the Plug Contacts

The plug is designed to provide problem free long term use but it will be necessary to clean the contacts periodically.

The plug on the end of the cord is open and can easily be cleaned with a typical stainless steel wire brush. (Fig1)

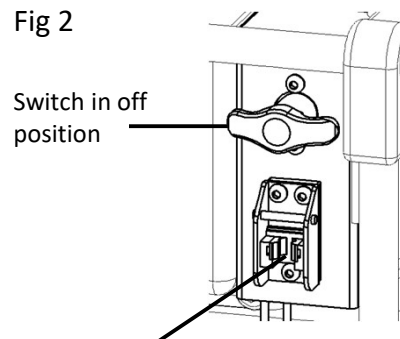
The contacts on the control panel are also open for easy cleaning, a common round wire brush designed for cleaning pipes is perfect for this job. (Fig 2) Make sure the switch is in the off position.

Fig1



Keep Contacts clean on both sides

Fig 2



Clean contacts with a round wire brush.
Insert the brush from the bottom