

Operating Instructions & Safety Manual



Furniture Mover Manual

Rated Capacity
1.8 tonnes

Note: Operator must read and fully understand the operating instructions before using this product.

Safety Information

Thank you for choosing our Hydraulic Furniture Mover.



For your safety and correct operation, please carefully read the manual before use.

All information contained within this manual is based on data available at time of creating. we reserve the right to modify the product at any time without notice or incurring any sanction. Please contact GT for any possible updates.

SPECIFICATIONS

Part No.	Capacity kgs	Lifting Height mm	Lifting Plate Size mm	Weight kgs
FM180B	1,800	100	600x60	86

APPLICATION

The Manual Furniture Mover has been developed for the lifting and transporting of cabinets and other large regular objects. For this reason, it's supports are lined with foam rubber to prevent the goods being transported from becoming damaged.

Since the Hydraulic Furniture Mover consists of two units, rectangular objects of varying length can be moved using a minimum of space. Due to the weight of the steel cabinet on the platform, it will hold itself in position when the units are standing vertically and the frame of the platform is in contact with it's sides. The securing strap, which has to be fastened correctly on both sides, is an additional and absolute necessity. The steering handles have a full lock of 180°, this means that goods being transported may be moved in every direction. The platforms are raised by operating the lever of the pump; this lever must not be used for pulling or pushing the BIMOBIL. The goods transported are lowered by twisted the manual release valve on the compact hydraulic system to the left.

Great care must be taken when lowering the platform, since the speed depends on the valve, must be twisted to the right until the stopper allows you to close it. Using an old rate, try a few "dry runs" with the transport units moving furniture with them. If you operate properly, our Hydraulic Furniture Mover will help you to move cabinets, furniture etc quickly and safely.

ASSEMBLY

Remove the fork pin at the free end of the track rod, set the steering handles parallel to each other, and push the fork of the track rod over the arm of the steering handle. Then replace the previously removed fork pin through the fork, arm and secure it with a clip. The second unit is assembled in the same way.

PRECAUTIONS AND PREPARATION

The floor must be absolutely level, smooth and clean. There must be no inclines or slopes to be moved over. Make sure that the floor and the floor covering, are able to stand up to the loading imposed by the wheel and ensure they can take the weight of the furniture being transported.

Check whether the piece of furniture to be transported contains any loose objects. These will have to be removed, or secured to stop them slipping out of position.

Check whether the piece of furniture is strong enough for the two opposite sides to take the weight of the piece via the transport units' platforms, and whether the upper supports of the transport units can hold the furniture to be transported without damaging it.

Find the weight of the piece of furniture to be transported. The maximum load of 1800 kg/pair = 900 kg for each unit must not be exceeded.

Find the centre of gravity of the furniture to be transported. Along the furniture base, it is decisive for the load that a single transport unit can bear, across the base, the centre of the transport unit, and, in connection with the height, for the moment of tilting that occurs when moving the furniture. When in use, the height of the centre of gravity must not exceed 0.8m. The distance of the transport units to one another must not be less than 0.5m and not exceed 4.0m.

Never use this equipment for towing behind a vehicle.

Safety Information

OPERATION

Before use, the transport components should be checked for function, and for any damage. If there are visible defects, the components should not be used. Damaged parts must be replaced. Since the hydraulic furniture mover consists of two parts, it is necessary for two persons to operate them.

Before using, the platforms should be let down to the floor until the transport units are standing vertically. Push the platform of the units under the side faces (narrow faces) of the cabinet until the top and bottom of the transport platform frame are resting against it. The centres of the platform must be beneath the centre of gravity of the cabinet.

Please the securing straps in position and tighten them. The straps will connect both units and, when used correctly, prevent them from slipping out of their position holding the goods to be transported. Here, the strap ends must be under direct tension, that is, the straps must not be pulling round the edge of a cabinet, etc. If the position of the centre of gravity makes it necessary for the cabinet being transported to project on one side out of frame, or, due to its width, it projects on both sides, an additional strap surrounding it must be employed. This must be fed through the strap loops on the units. However, the maximum overhang must not be more than 200mm.

Pump up the platform about 1cm, and carefully check how firmly the cabinet to be transported is standing on the platforms. It may be that the transport units will have to be moved to another position.

Both platforms must be raised at the same time and to the same amount. For the transport itself, the height off the floor must be a maximum of 2cm only. When moving the cabinets, only push the transport units and choose the way to the cabinet's new position so that, if possible it is only moved lengthwise. When moving cabinets sideways, always take the greatest care; there is a great risk of the cabinets tilting over. avoid any pushing movements.

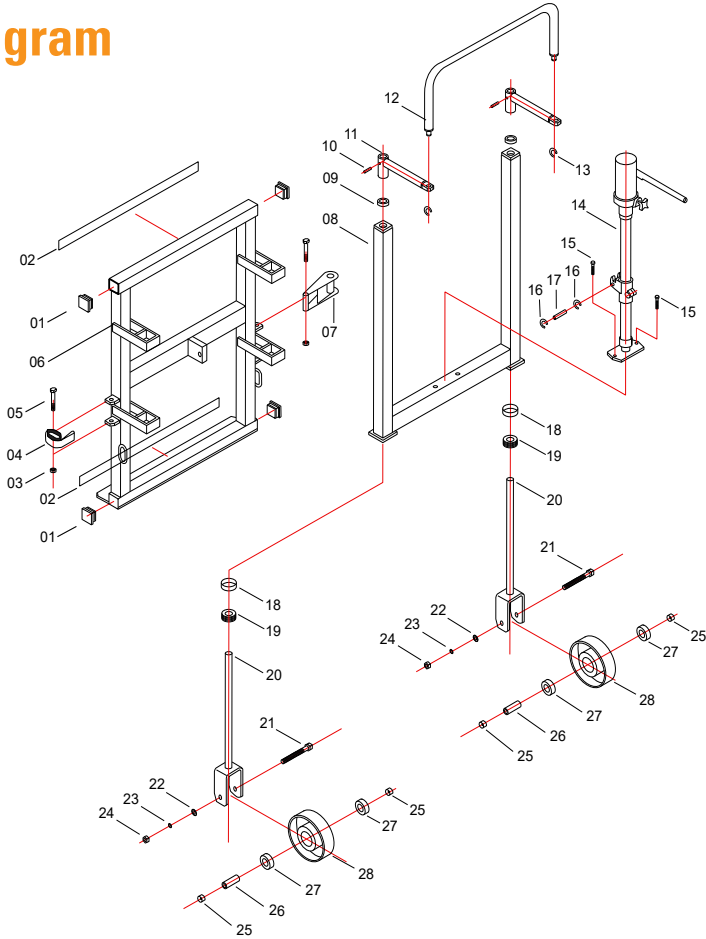


The cabinet being transported must not be left unattended standing on the equipment; it must always be lowered onto the floor. The securing straps may only be opened when the cabinet being transported, or the platforms are standing on the floor.

CARE & MAINTENANCE

Our hydraulic furniture mover only requires little care and maintenance, but this must be carried out regularly depending on its use. The spindles and gear wheels must be re-greased weekly or monthly, using standard multi-purpose grease. For this, the spindle may be reached using a brush through the slot in the guide rail. The gear wheels are also greased using brush, by first levering off the gear housing lid with a screwdriver. The lid should be pressed down firmly to close it again. The units' function should be tested.

Spare Parts List & Diagram



No.	Description	Qty
1	Dust-proof Cover	4
2	Cushion	2
3	Lock Nut M10	2
4	Woven Stripe	1
5	Screw M10 X 70	2
6	Lifting Frame	1
7	Cargo Lashings	1
8	Supporting Frame	1
9	Nylon Washer	2
10	Cylindrical Spring Pin 6x30	2
11	Handle Assembly	2
12	Hand Tube	1
13	Split Ring 9	2
14	Hydraulic Jack	1

No.	Description	Qty
15	Screw M6 X 20	2
16	Split Ring 8	2
17	Pin	1
18	Dust-proof Ring	2
19	Bearing 8204	2
20	Supporting Rod	2
21	Screw M12 X 85	2
22	Washer 12	2
23	Spring Washer 12	2
24	Nut M12	2
25	Bushing	4
26	Bushing	2
27	Bearing	2
28	Wheel	2