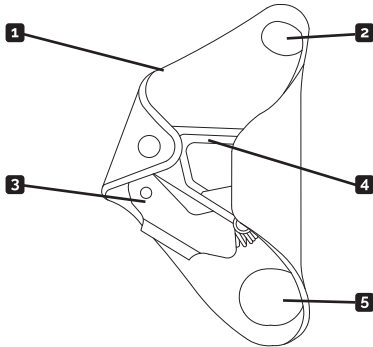


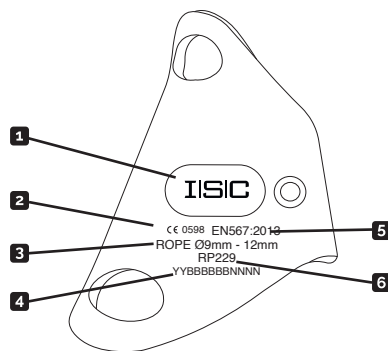
RP229 CHEST ASCENDER

User Instruction Manual

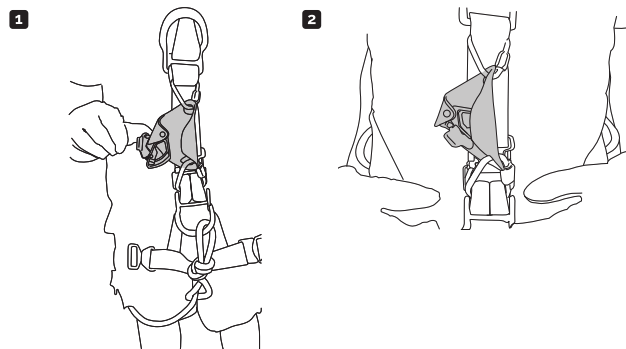
A Nomenclature



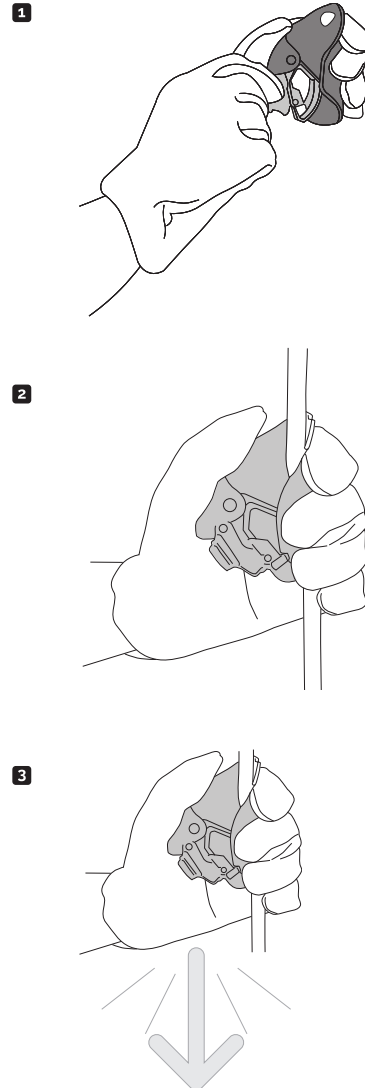
B Markings



C Installation on Harness



D Installation on Rope



A Nomenclature & Markings

- 1 Main Frame
- 2 Secondary Attachment Point
- 3 Cam Safety Catch
- 4 Main Cam
- 5 Main Attachment Point

B Markings

- 1 Manufacturers Identification
- 2 Body Controlling the Manufacture of PPE
- 3 Suitable Rope Diameters - (EN1891 A g-12mm)
- 4 Serial Number (Year of Manufacture/ Batch Number/ Individual Number)
- 5 EN567 : 2013 - Mountaineering Equipment - Rope Clamps
- 6 Part Number

C Installation on Rope

- 1 Open cam safety catch and retain on the frame
- 2 Insert the rope and close the cam fully
- 3 Pull the Cam Safety Catch away from the frame, allowing the cam to 'clamp' the rope. Whilst in this position, the Cam Safety Catch prevents the rope from coming out of the device. The device should now slide up the rope. To check that the device is engaged correctly pull the device down the rope sharply.

D Installation on Harness

- 1 Attach the device to the harness by passing a connector through the connection holes. ISC recommends the use of maillions. The maillion used to secure the Main Attachment Point should be closed using a spanner to ensure that the connector can not be opened accidentally. The connector used in the Secondary Attachment Point is used to maintain the correct vertical orientation of the device against the chest.
- 2 When the harness is not in use, always close the cam of the device so objects do not become jammed in the device.

E Use

- 1 Rope ascending - To ascend a rope use this unit with another rope clamp (ISC hand ascender) and footloop.
- 2 Short descent of rope - To move down the rope a short distance, slide the device up the rope and simultaneously push the top of the cam in a downward direction. Ensure your fingers do not get stuck between the rope and the cam. Do not use the cam safety catch to manipulate the cam-this could cause the rope to come out of the device.

Product Record

1 Item 2 Serial Number 3 Year of Manufacture 4 Purchased From 5 Purchase Date 6 Name of Manufacturer 7 Date of First Use 8 Inspection Date 9 Reason (periodic examination (E) or repair (R)) 10 Conform 11 Comments 12 Signature

General

ISC equipment and components for prevention of falls from height meet or exceed recognised European, American or other International standards. A multi-language user instruction manual should accompany this product. It is the users responsibility to read and understand these instructions before use. If this product is sold outside of the original country of sale, it is the resellers responsibility to supply this document in the language of re-sale.

WARNING - Activities involving the use of this equipment are inherently dangerous. This equipment should only be used by a competent person or a person specifically trained in its use who is under the supervision of a competent person

Responsibility

It is the user's responsibility to ensure understanding of the correct safe use of this equipment, to use it only for the purposes for which it is designed, and to practise all proper safety procedures. It is mandatory that a Risk Assessment be carried out prior to any use and a rescue plan be in place for any work at height. Do not exceed loads either specified by the manufacturer or loads derived from the specified MBS using a recognised factor of safety. This equipment should not be used by persons with a medical condition(s) that may affect the safety of the user.

Compatibility

Always ensure that all components within a safety system are compatible and allow the system to function safely. Make sure that the connectors used to attach this device to your harness are compatible with the rope clamp (size, shape, etc.)

Use Inspection

Immediately before, during and after use make visual inspections of the product to ensure that it is in a serviceable condition and is operating correctly. Check the legibility of all markings.

Use Requirements

It is recommended that the viability of any installation should be verified by a suitably qualified person. Extreme care should be taken when using this product near harmful chemicals, moving machinery, electrical hazards and near sharp edges and abrasive surfaces. Wet and icy conditions may cause the rope to become slippery.

Modifications, repair

There are no serviceable parts on this unit. Do not under any circumstances modify the product as alterations may render it ineffective.

Product Inspection & Maintenance

In addition to the visual inspections (see Inspection) a thorough examination should be carried out by a competent person in line with applicable legislation and the intensity and environment of use. ISC recommends a thorough examination at least every twelve months. The product should be immediately withdrawn from use and not used again until confirmed in writing by a competent person that it is safe to do so, should any doubt arise about its condition for safe use or, if it has been used to arrest a fall. Extreme temperatures and the effects of chemicals, rust, cuts and abrasions could affect the performance and lifespan of the equipment, to as little as a single use. The potential lifetime of ISC products is up to 10 years for plastic or textile products, and indefinite for metal products. The actual lifetime of a product depends on a variety of factors such as, the intensity of use, the frequency of use, the environment in which it has been used, the competency of the user, and how well it has been maintained and stored etc. Defective equipment shall be put beyond use to ensure it is not used as safety equipment.

Storage & Transportation

The product should be stored in a clean, dry environment away from exposure to UV, corrosive or chemical substances or extreme heat sources. Care should be taken to protect the product against damage during transportation.

Cleaning

The product must be cleaned regularly (or after every use in a marine environment) with a mild detergent. Afterwards the product should be rinsed in clean water and allowed to dry naturally. Alternatively an air gun can be used to clear debris from device. Moving parts may be oiled regularly with a light oil such as 3-in-1. A small drop may be applied to the axle on the cam and the cam safety catch pivot.

Manufacturers' responsibility

The manufacturer or distributor will not be held responsible for any eventual damages, injuries or death resulting from an improper use of this equipment. If there is any doubt about the compatibility of the products you have chosen please consult the manufacturer

Approvals - Declaration of Conformity This device is manufactured by ISC, Llandygai Industrial Est., Bangor, Gwynedd, LL57 4YH

Certification

Personal Protective Equipment Regulation (EU) 2016/425
Notified Body having carried out the CE type test (Module B):

Notified body responsible for production monitoring and inspection (Module D):

SATRA Technology Europe Ltd. (2777),
Bracetown Business Park,
Clonee,
Dublin,
D15 YN2P,
Ireland

SGS Fimko Oy (0598)
Takomotie 8
FI-00380 Helsinki
Finland

PRODUCT RECORD

| 1 | | | | 3 | |
|---|--|---|----|----|----|
| 2 | | | | 5 | |
| 4 | | | | 7 | |
| 8 | | 9 | 10 | 11 | 12 |
| | | | | | |
| | | | | | |
| | | | | | |
| | | | | | |
| | | | | | |
| | | | | | |
| | | | | | |
| | | | | | |
| | | | | | |
| | | | | | |