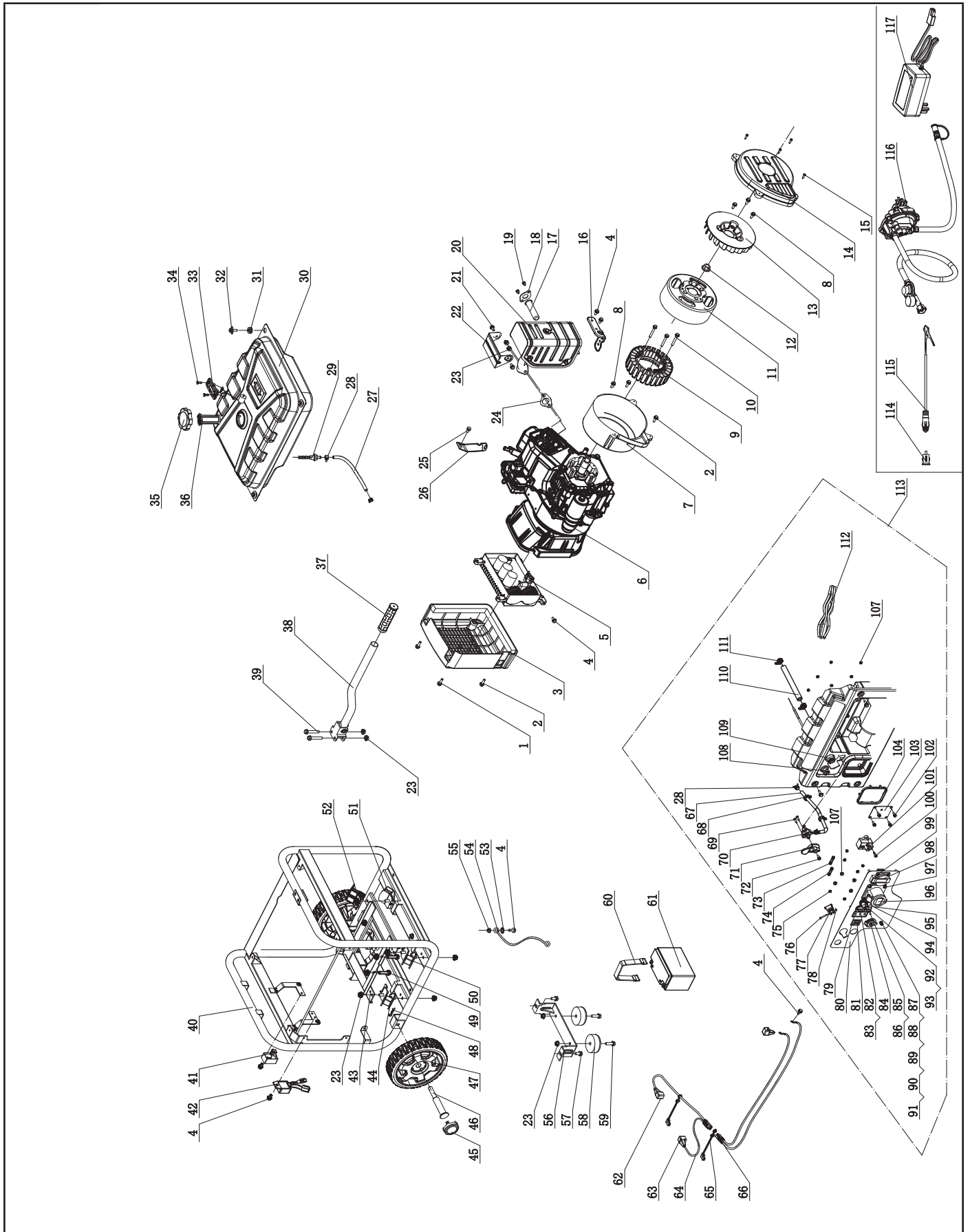


Parts Diagram



Parts List

#	Part Number	Description	Qty.
1	1.5789.0625	Flange Bolt M6 x 25	2
2	1.5789.0620	Flange Bolt M6 x 20	4
3	85.220005.01	Protection Cover, Control Unit	1
4	1.5789.0612	Flange Bolt M6 x 12	7
5	85.221000.13	Control Unit, 3.3KW, 230V/50Hz, Wireless Parallel	1
6	CPG4000DHY-DF-UK	Engine, 224cc	1
7	85.190002.01	End Housing, Motor	1
8	1.5789.0615	Flange Bolt M6 x 15	4
9	85.191000.16	Stator Assembly	1
10	1.9074.14.0650	Bolt/Washer Assembly M6 x50	3
11	85.191100.03	Rotor Assembly	1
12	2.02.006	Nut M14 x 1.5	1
13	83.190001.01	Fan, Generator	1
14	85.190003.01	End Cover, Generator	1
15	1.845.4219	Screw ST4.2 x 19	4
16	85.100100.01.2	Bracket, Muffler	1
17	46.101300.08	Spark Arrester Assembly	1
18	46.101503.08	Plate, Spark Arrester	1
19	1.9074.4.0514	Screw/Washer Assembly M5 x 14	2
20	85.101000.01.2	Muffler Assembly	1
21	1.9704.17.0610	Bolt/Washer Assembly M6 x 10	2
22	85.101203.01.2	Cover, Exhaust Pipe	1
23	1.6177.1.08	Lock Nut M8, Flange	18
24	26.100001.00	Gasket, Muffler	1
25	1.5789.0608	Flange Bolt M6 x 8	1
26	23.090006.21	Holder, Air Cleaner	1
27	85.070011.04	Fuel Pipe 350+25 mm, Fuel Tank to Fuel Valve	1
28	2.06.007	Clamp, Ø8.2 x b8	4
29	21.070600.03	Connect, Al	1
30	85.071000.01.48	Fuel Tank, 11L, Yellow	1
31	122.070015.01	Mount Vibration, Fuel Tank	4
32	2.08.143.1	Flange Bolt/Washer Assembly M6 x 20, Black	4
33	122.072000.02	Fuel Level Assembly	1

#	Part Number	Description	Qty.
34	1.819.0510	Screw M5 x 10	2
35	21.070100.80	Fuel Tank Cap	1
36	122.070300.03	Fuel Filter	1
37	152.200702.00	Cover, Handle	1
38	122.200700.03.2	Handle	1
39	1.5789.0845	Flange Bolt M8 x 45	2
40	61184.0.2	Frame, 520 x 481x 474	1
41	5.1820.009	Charger	1
42	5.1800.009	Rectifier	1
43	85.201600.01	Supporter	1
44	85.201200.01	Motor Mount 1	1
45	122.201702.11.48	Wheel Cover, Tooth Profile 8-10 in, Yellow	2
46	122.201501.23.1	Pin Roll, Wheel, Ø16 x Ø10 x 97, Black	2
47	122.201701.11.48	8 in. Wheel, PU, Yellow	2
48	2.16.001	Pin Ø2 x 33, "R" Shape	2
49	1.5789.0832	Flange Bolt M8 x 32	4
50	85.201200.02	Motor Mount 2	2
51	85.201200.03	Motor Mount 3	1
52	85.100007.01	Insulation Board, Motor Mount	1
53	1.862.06	Lock Washer Ø6, Toothed	1
54	5.1900.093	Grounding Line 180mm	1
55	1.6177.1.06	Lock Nut M6, Flange	1
56	1.5789.0816	Flange Bolt M8 x 16	1
57	152.200002.00.2	Support Leg 60 mm	1
58	152.201400.00	Rubber, Support	2
59	1.5789.0825	Flange Bolt M8 x 25	2
60	122.200904.00	Pinch, Rubber	1
61	9.1000.07001	Battery 12V7AH	1
62	152.200013.02	Jacket, Wire, Black	1
63	152.200013.02.3	Jacket, Wire, Red	2
64	5.1900.127	Wire, To SAE Battery	1
65	152.200013.03	Sleeve, Connector	2
66	5.1900.146	Wire, To SAE Motor	1
67	85.070011.03	Fuel Pipe, Fuel Valve to Carburator, 350+25 mm	1
68	2.05.009	Clamp Ø12.5 x 7	2
69	1.845.4819	Screw ST4.8 x 19	2
70	83.070400.01.0	Fuel Valve	1
71	87.070001.01	Knob, Fuel Valve	1

#	Part Number	Description	Qty.
72	1.9074.4.0414.1	Screw/Washer Assembly M4 x 14, Black	1
73	5.1280.003	Fuse 10A	1
74	5.1280.008	Fuse 5A	1
75	1.6177.1.04.2	Lock Nut M4, Flange	6
76	1.823.0325	Screw M3 x 25	2
77	5.1050.000	Switch	1
78	1.6170.03	Nut M3	2
79	83.210016.02	Speed Limiter	1
80	85.019.20.2	Control Panel, Black	1
81	5.1000.015.3	Ignition Switch, Red	1
82	5.1870.010.3	Receptacle Cover, Connect Port, Red	1
83	83.210001.00.3	Connect Port, 125V/25A, Red	1
84	5.1110.005	Receptacle, DC 12V	1
85	83.210001.00.1	Connect Port, 125V/25A, Black	1
86	5.1870.010	Receptacle Cover, Connect Port, Black	1
87	1.5783.0520.1	Bolt M5 x 20, Black	1
88	1.93.05.1	Lock Washer Ø5, Black	2
89	1.862.05	Lock Washer Ø5, Toothed	1
90	1.6170.05.1	Nut M5, Black	2
91	1.97.1.05.1	Washer Ø5, Black	1
92	5.1200.308	8Amp Circuit Breaker, Push Button	1
93	5.1870.014	Receptacle Cover, Push Button	3
94	5.1210.913	13Amp Circuit Breaker, Push Button	1
95	5.1210.916	16Amp Circuit Breaker, Push Button	1
96	5.1120.014	Receptacle	1
97	1.819.0516.2	Screw M5×16	4

#	Part Number	Description	Qty.
98	5.1120.063	Receptacle	1
99	1.819.0418.2	Screw M4×18	4
100	1.845.4216	Screw ST4.2 x 16	1
101	5.1820.012	Charger	1
102	1.9074.4.0514.1	Screw/Washer Assembly M5 x 14, Black	4
103	85.061200.02.2	Guide Plate, Rope, Black	1
104	113.200106.00	Protector, Front Cover	1
105	1.5789.0615.1	Flange Bolt M6 x 15, Black	4
106	85.210002.03	Control Box	1
107	1.6177.1.05	Lock Nut M5, Flange	10
108	85.130300.02	Pull Choke Assembly	1
109	85.070021.00	Quick Coupler	1
110	152.070012.12	Hose 325 mm	1
111	2.06.023	Clip Ø20	2
112	CPG4000DHY-DF-UK.21.10	Wire Assembly	1
113	CPG4000DHY-DF-UK.21	Control Panel Assembly	1
114	9.1700.008	Plug, USB 5V/2.4A	1
115	9.1600.009	Cables, 12V, 2m, CSA	1
116	87.130000.95	LPG Hose With Regulator	1
117	9.1700.011	Smart Charger, SAE	1

Engine Parts List

#	Part Number	Description	Qty.
1	1.5789.0615	Flange Bolt M6 x 15	4
2	22.061100.00.2	Cover, Recoil Starter, Black	1
3	21.061005.00	Spring, Recoil Starter	1
4	2.10.003.1	Rope Ø4 x 1550, Black	1
5	21.061001.01	Reel, Recoil Starter	1
6	45.060003.00	Spring, Ratchet	2
7	45.060002.00	Starter Ratchet, Steel	2
8	45.060009.00	Spring, Ratchet Guide	1
9	45.060007.00	Ratchet Guide	1
10	45.060008.00	Screw, Ratchet Guide	1
11	24.040004.00	Guide Plate, Push Rod	1
12	1.5789.0612	Flange Bolt M6 x 12	6
13	85.080100.02.48	Fan Cover, Yellow	1
14	85.091100.01	Base, Air Cleaner	1
15	21.061300.01.48	Handle, Recoil, Soft, Yellow	1
16	24.130004.20	Gasket, Air Cleaner	2
17	22.061000.01	Recoil Assembly	1
18	85.091000.01	Air Cleaner Assembly	1
19	85.131000.05	Carburetor	1
20	2.03.016	Washer Ø10 x Ø16 x 1.5, Drain Bolt	1
21	2.02.006	Nut M14 x 1.5	1
22	23.060001.01	Pulley, Starter	1
23	27.080001.00	Cooling Fan	1
24	24.120100.10	Flywheel	1
25	2.11.001	Oil Seal Ø25 x Ø41.3 x 6	2
26	2.01.010	Stud Bolt M8 x 35	2
27	1.9074.4.0420.1	Screw M4 x 20	1
28	85.132100.04	Support, Stepper Motor	1
29	85.132200.01	Stepper Motor	1
30	1.9074.3.0408	Screw M4 x 8	3
31	81.132001.00	Cover, Stepper Motor	1
32	22.130003.00	Gasket, Carburetor	1
33	24.130002.00	Gasket, Insulator	1
34	27.130001.00	Insulator, Carburetor	1
35	23.080600.00	Air Guide, Right Side	1
36	2.01.003	Stud Bolt M6 x 90	2
37	85.030100.01	Crankcase	1
38	21.127000.02	Oil Level Sensor	1
39	26.010100.01	Cylinder Head, 224cc	1
40	27.050200.00	Connecting Rod	1
41	85.050100.01	Crankshaft	1

#	Part Number	Description	Qty.
42	1.276.6205	Bearing 6205	2
43	24.030008.00	Gasket, Crankcase Cover	1
44	46.031000.00.48	Oil Dipstick Assembly, Yellow	1
45	1.6177.06	Flange Nut M6	2
46	85.030007.01	Cover, Crankcase	1
47	1.5789.0832	Flange Bolt M8 x 32	5
48	23.091002.21	Seal, Air Cleaner	1
49	27.030013.01	Seal Strip, Crankcase Cover, Short	1
50	27.030013.00	Seal Strip, Crankcase Cover, Long	1
51	22.123000.02	Ignition Coil	1
52	1.5789.0625	Flange Bolt M6 x 25	3
53	27.091200.01	Cover, Air Cleaner	1
54	23.091003.21	Element, Air Cleaner	1
55	23.091001.21	Separator, Air Cleaner	1
56	85.130200.01	Support, Choker Rod	1
57	85.220005.03	Protective Cover, Control Unit, Engine	1
58	2.08.121	Flange Bolt M10 x 65	1
59	1.5789.0840	Flange Bolt M8 x 40	1
60	25.040013.00	Lifter, Valve	2
61	2.04.001	Dowel Pin Ø9 x 14	2
62	27.041000.01	Camshaft	1
63	2.14.012	Woodruff Key 4 x 7.5 x 19	1
64	2.08.037	Drain Bolt M10 x 1.25 x 25	1
65	27.050005.00	Piston	1
66	23.050003.00	Pin, Piston	1
67	2.09.001	Circlip Ø18 x Ø1	2
68	27.050303.00	Ring, Oil	1
69	27.050302.00	Ring, Second Piston	1
70	27.050301.00	Ring, First Piston	1
71	27.030009.01	Gasket, Cylinder Head	1
72	2.04.003	Dowel Pin Ø10 x 14	2
73	23.040002.02	Valve, Intake	1
74	27.040006.00	Valve, Exhaust	1
75	85.080200.01	Air Shroud, Cylinder	1
76	2.15.002(F6RTC)	Spark Plug F6RTC	1
77	1.5789.0865	Flange Bolt M8 x 65	3
78	23.040017.00	Oil Seal, Valve, Steel	2
79	21.040003.00	Spring, Valve	2
80	21.040007.00	Retainer, Exhaust Valve Spring	1

#	Part Number	Description	Qty.
81	21.040001.00	Retainer, Intake Valve Spring	1
82	21.040008.00	Rotator, Exhaust Valve	1
83	24.040202.00	Shaft, Rocker Arm	1
84	22.040009.00	Rocker Arm	2
85	22.040012.00	Screw, Valve Adjustment	2
86	21.040021.00	Nut M6 x 0.5, Lock	2
87	1.97.1.06	Washer Ø6	2
88	1.6177.1.06	Lock Nut M6, Flange	2
89	1.5789.0620	Flange Bolt M6 x 20	1
90	24.040201.00	Retainer, Rocker Arm	1
91	23.040010.00	Bolt, Rocker Arm	2
92	27.040005.00	Push Rod	2
93	21.020002.01	Gasket, Cylinder Head Cover	1
94	24.021000.00	Cover, Cylinder Head	1
95	23.020001.02	Breather Tube, 112 + 35 mm	1
96	27.131017.01	Main Jet, Standard	1
	27.131017.01.01	Main Jet, Altitude	/
97	1.6177.1.05	Lock Nut M5, Flange	3
98	85.130005.04	Support, Stepper Motor	1
99	2.13.034	Bush Ø5 x Ø10 x 12	1
100	1.823.0306.1	Screw M3 x 6	2
101	24.040200.00	Rocker Arm Assembly	1
102	27.010000.00	Cylinder Head Assembly	1
103	2.08.166	Flange Bolt M5x12	4
104	1.5789.0629	Flange Bolt M6 x 29	1
105	2.04.005	Dowel Pin Ø8 x 10	2
106	27.125100.00	Starter Motor	1
107	1.93.05	Lock Washer Ø5	2
108	1.16674.0516	Flange Bolt M5 x 16	2
109	23.125000.03	Relay, Starter, Three Gear	1
110	27.125000.01	Starter Motor Assembly	1

Wiring Diagram

