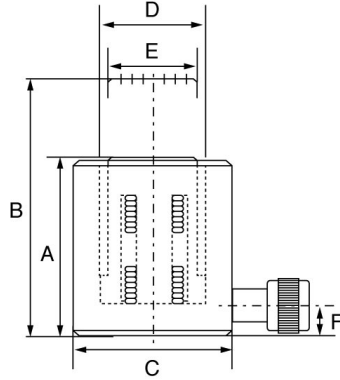


## Aluminium Cylinder – TAR Series



## TECPOS

- Maximum Pressure: 700 Bar.
- Hydraulic Coupler: TBC 381F(PT3/8).
- Spring return.
- Marked with CE, capacity, manufacturers ID, product ID mark and traceability code.
- Certification available **2.1** **DoC**

Product Code	Cyl. Cap.	Stroke	Cyl. Effective Area	Oil Cap.	Retracted Height	Extended Height	Cyl. Out Dia	Cyl. Bore Dia	Piston Rod Dia	Base to Inlet Port	Weight	Pump
	t	mm	cm <sup>2</sup>	cc	A mm	B mm	C mm	D mm	E mm	F mm	kgs	
TAR2050	20	50	28.3	145	150	200	89	60	54	28	3.2	1B or 08
TAR20100	20	100	28.3	290	200	300	89	60	54	28	4.1	1B or 08
TAR20150	20	150	28.3	435	250	400	89	60	54	28	4.8	1B or 08
TAR3050	30	50	44.2	220	168	218	108	75	65	35	5	1B or 08
TAR30100	30	100	44.2	440	218	318	108	75	65	35	6.3	1B or 08
TAR30150	30	150	44.2	660	268	418	108	75	65	35	7.5	1C or 17
TAR5050	50	50	70.9	355	182	232	134	95	85	35	8.7	1B or 08

Product Code	Cyl. Cap.	Stroke	Cyl. Effective Area	Oil Cap.	Retracted Height	Extended Height	Cyl. Out Dia	Cyl. Bore Dia	Piston Rod Dia	Base to Inlet Port	Weight	Pump
	t	mm	cm <sup>2</sup>	cc	A mm	B mm	C mm	D mm	E mm	F mm	kgs	
TAR50100	50	100	70.9	708	232	332	134	95	85	35	10.2	1C or 17
TAR50150	50	150	70.9	1,063	282	432	134	95	85	35	12.9	1C or 17
TAR10050	100	50	132.8	660	193	243	189	130	110	40	16.5	1C or 17
TAR100100	100	100	132.8	1,320	243	343	189	130	110	40	20.6	25
TAR100150	100	150	132.8	1,980	293	443	189	130	110	40	23.4	25
TAR15050	150	50	201.1	1,005	208	258	238	160	135	45	27	25
TAR150100	150	100	201.1	2,010	258	358	238	160	135	45	33.4	25
TAR150150	150	150	201.1	3,016	308	458	238	160	135	45	39.8	50