

# Wallshøppe Removable Panel Installation - Half Drop Repeat

## READ BEFORE INSTALLATION:

The wall surface should be cleaned thoroughly prior to installation. Removable wallpaper will adhere to most common paints except for washable paints and "No or low VOC" paints. To counter this limitation, the wall needs to be wiped with a mixture of 70% Isopropyl alcohol and 30% water. Please repeat this step twice.

The adhesive used on our removable paper is activated by pressure. For best results, make sure to use a roller or a squeegee to roll over the panels to activate the adhesive so that they adhere firmly to your walls. Otherwise, bubbling may occur and/or your panels may peel off the wall.

For best and long-lasting results, walls should be primed before install.

## IMPORTANT:

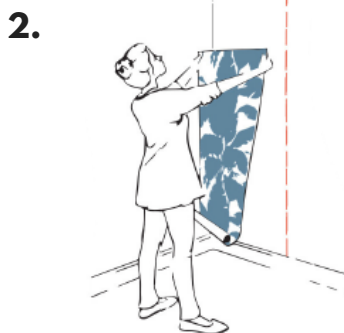
Wallshøppe includes a 1/4" bleed, or overprint, in the width and a 1/2" to 1" bleeding the length of every panel. The overprint can stay on the panel (Option A) or it can be cut off before installation (Option B). Please note the following for the method you decide to use:

**Option A - Overlap:** Simply overlap the adjoining panel 1/4" so that the pattern of the panel repeats correctly.

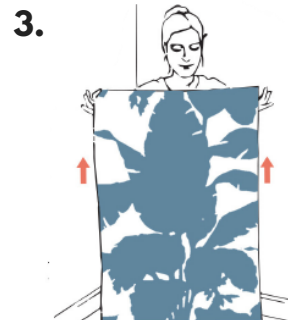
**Option B - Edge to Edge:** Professional installer recommended. Measure 1/4" from the right edge of the panel. Using a sharp edge, remove the 1/4" strip running the length of the panel. Measure 1" from the bottom edge of the panel. Using a sharp edge, remove 1" stripe running the width of the panel.



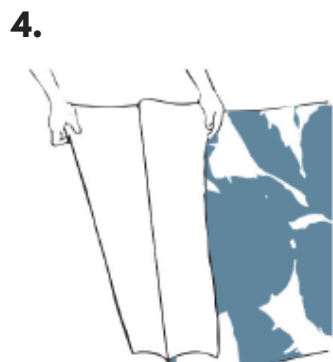
1. Clean walls & dry walls.



2. Map out where each panel will be going on your wall.



3. Identify the top & the bottom of the WS panel.



4. Pull a 2"-4" strip of the panel away from the liner. This strip will be the first piece to adhere to the wall.



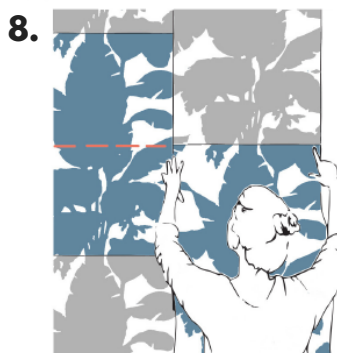
5. Line up the top panel edge with the ceiling, or top of wall. Beginning from the top corner, press the 2"-4" strip firmly onto the wall.



6. Once the panel is secure, reach under & grab the liner. Slowly pull the liner away from the panel while pressing the paper onto the wall & smoothing as you go.



7. Install your next panel below or to the side of your previous panel so they match up and repeat steps 2-6.



8. If you are installing a design with a half-drop repeat, the panels match seamlessly when they are connected at the halfway point of the adjoining design.

## TIPS:

- When smoothing, work from the center outwards to push air bubbles to the edge of the panel.
- Use a squeegee (felt line or rubber preferably) to firmly press the entire panel to the wall.

wallshøppe