

***Handcrafted & Manufactured
for you from California***



Amoretti[®]

*Ultimate Manufacturer of Brewers'
Natural Infusions, Craft Purée[®] & Concentrates*

Overwhelmed with choices? Get in touch!

Our product offering includes over 2,500 pastry, savory, and beverage ingredients each bearing the hallmarks of an Amoretti product: natural ingredients, brilliant flavor, freshness, and consistency.

We consider our customers part of the Amoretti family. In order to ensure your success, we offer personalized assistance when ordering, no minimums, and prompt delivery.

Welcome to the World of Amoretti!

CONTACT US:

Monday–Friday, 8am–5pm (PST)

USA: 1.855.855.3505

Intl: 1.805.983.2903

Email: brewers@amoretti.com

www.Amoretti.com

“Every company’s greatest assets are its customers, because without customers there is no company.”

-Michael LeBoeuf



INGREDIENTS OF UNCOMPROMISED QUALITY!

Rest assured, Amoretti knows quality ingredients!

Amoretti provides incomparable flavors, with a clear focus on uncompromised quality.

Because Amoretti ingredients provide extreme batching accuracy to maintain a consistent product quality, we are the suppliers to the who's who from Fortune 500 companies to international food & beverage conglomerates and breweries. While our ingredients are in high demand by professional artisans, Amoretti ingredients are easy to use, which also makes them the go-to for amateurs and novices, too.

Unleash the power of your imagination with Amoretti's infinite number of flavor combinations, and still maintain economic feasibility, because with Amoretti ingredients, a little goes a long way.

**NO MINIMUM ORDERS!
COMPANY DIRECT!
ATTENTIVE & KNOWLEDGEABLE SERVICE!**



"Amoretti, where your imagination is the limit."

- Jack & Maral



Brew with confidence!

Amoretti has hundreds of flavorings approved by the Alcohol and Tobacco Tax and Trade Bureau.



Product Categories & Use Levels for beverages

BEVERAGE INFUSIONS	Ideal for seltzers, teas, iced teas, spirits & liquors!	2.9% by weight About 2.9 fl oz per 1 gallon About 22.5 mL per 1 liter
CRAFT PURÉES	Filtered, naturally concentrated, shelf-stable fruit infusions.	0.83 - 2.5% by weight About 1.16-3.5 oz by weight per 1 gallon About 33-99 grams per 3.8 liters
ARTISAN NATURAL INFUSIONS	Highly concentrated natural infusions with intense flavor, acidity, aroma, & plant based natural colors.	0.5 - 1% by weight About 7-14 oz by weight per 10 gallons About 198-397 grams per 38 liters
COMPOUND INFUSIONS	Intense, evenly concentrated.	0.5 - 1% by weight About 7-14 oz by weight per 10 gallons About 198-397 grams per 38 liters
EXTRACT INFUSIONS	Extremely concentrated top notes of flavor & aroma. Water soluble.	0.01 - 0.02% by weight About 1.5-3 oz by weight per 111 gallons About 43-85 grams per 420 liters
STRAIGHT USE INGREDIENTS	A wide variety of single-source, easy-to-use ingredients with unique flavors such as molasses.	To Taste
LIQUEUR FLAMBÉS & CONCENTRATES	3-10 times more concentrated than market shelf liqueurs.	0.01 - 0.02% by weight About 1.5-3 oz by weight per 111 gallons About 43-85 grams per 420 liters

*More product lines available—
Amoretti® Premium Syrups, Martini Mixes, Food Colors, Edible Perfume Sprays, and many more!
Visit Amoretti.com for the full list.*

For recipes online, find us on YouTube @AmorettiTestKitchen



Blended S'mores
Iced Coffee



Honeydew Melon
Boba Tea



Raspberry
Berliner Weisse



Pear Almond
Gin & Tonic



Mango Habanero
Bloody Mary

*With over 2,500 World Championship quality ingredients and flavors—
Amoretti® can bring your wildest dreams into reality!*

Beverage Infusions *For seltzers, teas, iced teas, spirits & liquors.*

Infuse alcoholic and non-alcoholic seltzers, Italian sodas, Italian ice, ciders, cocktails, iced teas, sangria, and milkshakes. Our Beverage Infusions allow you to scale up from a glass to a tank with ease and consistency. Our products are crafted to be your secret ingredient! We value our customers' vision and can help bring yours to life.

- Made of real fruit
- Super Concentrated
- Shelf-stable, even after opening
- Preservative-Free
- Low in calories

PACKAGING

25.4 fl oz (750 mL)

- Available in 6 and 12 bottle cases

Food Service:

1 gal jug, 6 gal bucket, 55 gal drum

Larger sizes available, please inquire.

USE LEVEL: 1-2 pumps per 12 fl oz

0.27-0.54 fl oz per 12 fl oz | 2.9-5.8 fl oz per 1 gal

8-16 mL per 354.9 mL | 22.5-45 mL per 1 L

AVAILABLE SIZES:



Beverage Infusions

For seltzers, teas, iced teas, spirits & liquors.

BI-34 Apple Ginger	BI-24 Mojito Libre®
BI-27 Armenian Apricot	BI-30 Moscow Mule
BI-35 Banana	BI-19 Blood Orange
BI-36 Spicy Banana	BI-31 Spicy Blood Orange <i>Blood Orange, Jalapeño</i>
BI-5 Wild Berry <i>Blueberry, Boysenberry, Raspberry, Strawberry</i>	BI-49 Passion Fruit
BI-42 Blueberry	BI-50 Passion Fruit Tea
BI-43 Blueberry Lemonade	BI-15 Passion-Orange-Guava
BI-9 Black Cherry	BI-22 Peach
BI-16 Cherry Lime Blue Raspberry	BI-21 White Peach
BI-25 Irish Coffee	BI-40 White Peach Lemonade
BI-4 Cucumber	BI-29 Pear
BI-23 Spicy Cucumber <i>Cucumber, Jalapeño</i>	BI-38 Pear Ginger
BI-8 Grapefruit	BI-12 Pineapple
BI-10 Guava	BI-3 Spicy Pineapple <i>Pineapple, Jalapeño</i>
BI-33 Golden Kiwi	BI-51 Pomegranate Grenadine
BI-26 Lemon	BI-17 Prickly Pear
BI-20 Lemon Lime	BI-18 Prickly Pear Key Lime
BI-39 Lemonade	BI-37 Pumpkin Spice
BI-43 Blueberry Lemonade	BI-7 Raspberry
BI-48 Chai Tea Lemonade	BI-44 Raspberry Lemonade
BI-47 Green Tea Lemonade	BI-61 Raspberry Lime
BI-46 Iced Tea Lemonade	BI-54 Root Beer
BI-41 Mango Lemonade	BI-2 Southern Charm <i>Cantaloupe, Strawberry, Watermelon, Passion Fruit</i>
BI-40 White Peach Lemonade	BI-52 Spicy
BI-44 Raspberry Lemonade	BI-14 Strawberry Lemonade
BI-14 Strawberry Lemonade	BI-28 Tangerine
BI-45 Watermelon Lemonade	BI-48 Chai Tea Lemonade
BI-6 Key Lime	BI-47 Green Tea Lemonade
BI-55 Limoncello	BI-60 Iced Tea
BI-56 Limoncello Lavendar	BI-46 Iced Tea Lemonade
BI-57 Limoncello Rose	BI-53 Jasmine Tea
BI-58 Lychee	BI-1 Tropical <i>Passion Fruit, Strawberry, Peach, Orange</i>
BI-59 Spicy Lychee	BI-62 Vodka
BI-11 Mango	BI-13 Watermelon
BI-41 Mango Lemonade	BI-45 Watermelon Lemonade
BI-32 Spicy Mango <i>Mango, Jalapeño</i>	



Craft Purée® For craft beer, kombucha & more.

Craft Purée® are super concentrated, filtered and shelf stable even after opening. Simply add 1-3 fl.oz./gallon of the Craft Purée either to the fermentation tank or purge directly into keg. Also available in pump dispensed bottle to be used in tap room setting to flavor one glass at a time. Simply pump, pour & serve!

- Shelf stable
- Super concentrated
- Filtered
- Natural flavors
- No dissolving or mixing needed

PACKAGING

25.4 fl oz (750 mL)

- Available in 6 and 12 bottle cases

Food Service:

1 gal jug, 6 gal bucket, 55 gal drum

Larger sizes available, please inquire.

AVAILABLE SIZES:



Our visit to SLO Brew—
an awesome customer!

YouTube
@AmorettiTestKitchen

Amoretti

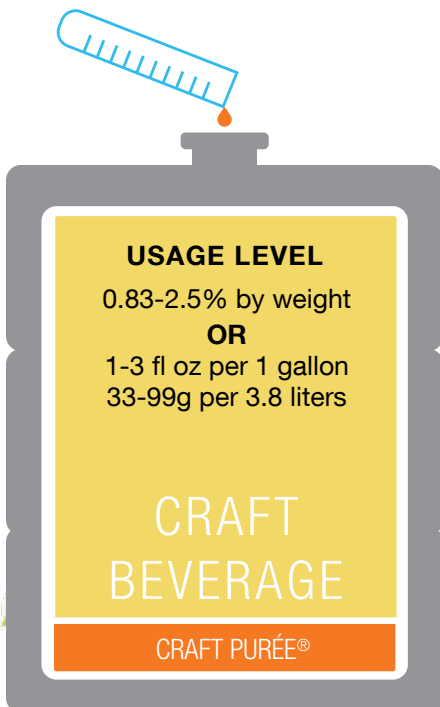
CRAFT PUREE

For craft beer, kombucha & more.

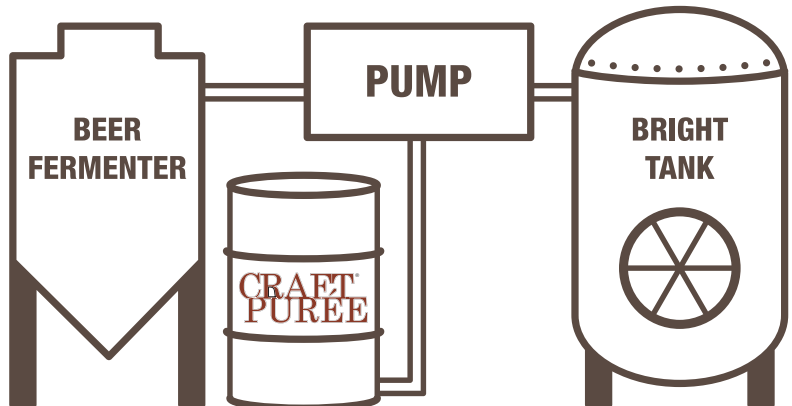
By the glass
By the keg
By the tank



- | | | |
|------------------------------|------------------------------|-------------------------------|
| CP14 Acai Blue | CP5 Grapefruit | CP46 Passion-Orange-Guava |
| CP16 Tart Apple | CP19 Guava | CP2 Peach |
| CP22 Apricot | CP32 Habañero Pepper | CP7 Pineapple |
| CP12 Banana | CP31 Jalapeño Pepper | CP18 Pomegranate |
| CP43 Sloe Berry (Blackthorn) | CP27 Pickled Jalapeño Pepper | CP26 Pumpkin Pie |
| CP20 Wild Berry | CP50 Golden Kiwi | CP51 Pumpkin Spice |
| CP28 Blackberry | CP11 Lemon | CP9 Raspberry |
| CP48 Bloody Mary | CP47 Lemon Lime | CP6 Wild Strawberry |
| CP8 Blueberry | CP15 Key Lime | CP52 Wild Strawberry Lemonade |
| CP10 Boysenberry | CP1 Mango | CP25 Wild Strawberry Rhubarb |
| CP44 Cassis (Blackcurrant) | CP49 Michelada | CP38 Bulgarian Rose |
| CP30 Black Cherry | CP36 Moscow Mule | CP35 Tangelo |
| CP29 Red Sour Cherry | CP40 Orange | CP34 Tangerine |
| CP41 Chocolate | CP4 Blood Orange | CP42 Vanilla Bean |
| CP24 Coconut | CP39 Orange Blossom | CP17 Watermelon |
| CP13 Espresso Coffee | CP37 White Peach | CP23 Woodruff |
| CP21 Cranberry | CP33 Pear | |
| CP45 Elderberry | CP3 Passion Fruit | |



LARGE SCALE BREWING PROCESS



Premium Syrups, Flavorings & Toppings

For brewing, distilling & more.

Enjoy these Ultra Premium Syrups created with maximum flavor & minimum sweetness, packing 94 servings per bottle. Ideal for gourmet coffees, Italian sodas, seltzers, cocktails, mixed drinks & beer. Try our *Crema di*TM flavors of creamy toppings & sauces as well as the *Sugar Free* line of flavors made with natural flavors, sucralose & preserved to maintain freshness. Our proprietary methods utilize the natural flavors of fruits and herbs to create delicious, unique and concentrated syrups for any cold or hot beverages, or to add a dash of flavor to any gourmet creation. Kosher, Preservative-free, Gluten free, GMO/GEO free and shelf stable, even after opening.

Premium Syrups & Toppings

- **No** crystallization!
- **No** curdling of milk!
- Made with natural flavors
- **Free** accurate portion-controlling pump included with each case.
- Flavors **94** hot 8 fl oz beverages per bottle (1-1.5 pumps per 8 oz drink)

Sugar Free Syrups

- **No** crystallization!
- **No** curdling of milk!
- Made with natural flavors
- **Free** accurate portion-controlling pump included with each case.
- Flavors **94** hot 8 fl oz beverages per bottle (1 pump per 8 oz drink)

PACKAGING

25.4 fl oz (750 mL)
Available in 6 and 12 bottle cases
1.7 fl oz (50 mL)
Available in 36 bottle cases
3 x 1.7 fl oz (50 mL)
Variety Packs
Available in 12 pack cases



1 bottle
MAKES
94 cups



PREMIUM SYRUPS

- AS-35 Almond (Orgeat)
- AS-88 Amaretto
- AS-78 Anise
- AS-1490 Apple Fritter
- **AS-185 Apple Pie
- AS-47 Tart Apple
- AS-48 Apricot
- AS-60 Banana
- **AS-1268 Birthday Cake
- AS-71 Blackberry
- AS-45 Blueberry
- AS-510 Boysenberry
- **AS-86 Brandy
- AS-656 Bubble Gum
- AS-529 Butterscotch
- **AS-686 Cajeta
- AS-66 Caramel
- **AS-648 Chai
- *AS-59 Champagne
- AS-62 Cherry
- **AS-531 Maraschino "Bing" Cherry
- **AS-126 Chestnut Praline
- **AS-72 Dark Chocolate
- **AS-675 Milk Chocolate
- **AS-696 Swiss Chocolate
- **AS-572 White Chocolate
- **AS-1 White Chocolate Macadamia
- **AS-772 White Chocolate Vanilla
- AS-94 Cinnamon
- **AS-1412 Cloudberry
- AS-84 Coconut Cream
- AS-77 Espresso Coffee
- AS-1342 Irish Coffee
- **AS-508 Mexican Coffee
- Liqueur Type
- AS-583 Cola
- AS-1492 Boston Cream Pie
- **AS-654 Cookies & Cream
- **AS-189 Crème Brûlée
- **AS-804 Blue Curaçao
- AS-1491 Glazed Donut
- **AS-578 Date
- **AS-646 Dulce de Leche
- **AS-505 Egnog
- **AS-179 Elderflower
- **AS-1055 Elderberry Blossom
- AS-100 English Toffee
- **AS-612 Fiori di Sicilia
- **AS-522 Ginger
- **AS-697 Gingerbread
- AS-532 Grape
- AS-512 Green Tea
- AS-1261 Grenadine
- AS-52 Guava
- AS-503 Hazelnut
- AS-1489 Honey Cruller

- AS-561 Hibiscus
- AS-85 Honeydew Melon
- AS-70 Irish Cream
- **AS-613 Jasmine
- *AS-79 Kirsch
- AS-56 Kiwi
- **AS-83 Violet Lavender
- AS-49 Lemon
- AS-97 Lime
- AS-1038 Lingonberry
- AS-586 Lychee
- AS-542 Macadamia
- **AS-620 Mai Tai
- **AS-55 Mango
- **AS-1177 Mangosteen
- AS-95 Maple
- **AS-9588 Maple Praline
- **AS-1200 Toasted Marshmallow
- **AS-2 Marzipan
- AS-69 Crème de Menthe
- **AS-28 Mojito Mint
- **AS-27 Mojito
- **AS-1269 Mud Pie
- AS-533 Nutmeg
- AS-43 Orange
- **AS-74 Orange Blossom
- **AS-383 Blood Orange
- **AS-41 Grand Orange
- AS-58 Papaya
- AS-53 Passion Fruit
- AS-61 Peach
- AS-1355 Peanut
- AS-51 Pear
- AS-65 Peppermint
- AS-68 Piña Colada
- AS-54 Pineapple
- AS-40 Pistachio
- **AS-128 Pistachio Praline
- **AS-10004 Pomegranate
- **AS-560 Prickly Pear
- AS-1274 Pumpkin Pie
- AS-506 Pumpkin Spice
- AS-42 Raspberry
- AS-104 Rock Candy
- **AS-1270 Rocky Road
- AS-514 Root Beer
- **AS-57 Rose
- AS-76 Jamaican Rum
- **AS-1425 Salep
- AS-1303 Speculoos Cookie
- **AS-44 Wild Strawberry
- *AS-1338 Brown Sugar
- *AS-1394 Brown Sugar Cinnamon
- AS-50 Tangerine
- **AS-530 Tequila
- *AS-99 Tiramisu
- **AS-1265 Tres Leches

- **AS-80 Triple Sec
- AS-118 Vanilla
- AS-46 French Vanilla
- **AS-500 Madagascar Bourbon Vanilla Bean
- AS-63 Walnut
- AS-504 Watermelon
- **AS-73 Wine Blossom
- **AS-1157 Yuzu
- **AS-568 Zabaione

SUGAR FREE SWEETENER

- **AS-761 Natural Sugar Free Sweetener

SUGAR FREE SYRUPS

- *AS-SF88 Amaretto
- *AS-SF48 Apricot
- *AS-SF529 Butterscotch
- *AS-SF66 Caramel
- *AS-SF72 Dark Chocolate
- *AS-SF612 Fiori di Sicilia
- *AS-SF503 Hazelnut
- *AS-SF70 Irish Cream
- *AS-SF49 Lemon
- *AS-SF97 Lime
- *AS-SF55 Mango
- *AS-SF28 Mojito Mint
- *AS-SF43 Orange
- *AS-SF61 Peach
- *AS-SF1274 Pumpkin Pie
- *AS-SF506 Pumpkin Spice
- *AS-SF42 Raspberry
- *AS-SF46 French Vanilla

TOPPINGS

- **AS-788 Crema di® Amaretto
- **AS-729 Crema di® Butterscotch
- **AS-679 Crema di® Caramel
- **AS-749 Crema di® Salted Caramel
- **AS-710 Crema di® Dark Chocolate
- **AS-708 Crema di® Mexican Coffee Liqueur Type
- **AS-700 Crema di® English Toffee
- **AS-703 Crema di® Hazelnut
- **AS-682 Crema di® Irish Cream
- **AS-741 Crema di® Grand Orange
- **AS-777 Crema di® Pecan Pie
- **AS-740 Crema di® Pistachio
- **AS-774 Crema di® Pumpkin Pie
- **AS-742 Crema di® Raspberry
- **AS-744 Crema di® Wild Strawberry
- **AS-747 Crema di® Chai Tea
- **AS-799 Crema di® Tiramisu
- **AS-651 Crema di® Vanilla

SAUCES (64 FL. OZ.)

- SAU-13 Crema di® Caramel
- SAU-11 Dark Chocolate
- SAU-51 Milk Chocolate
- SAU-12 White Chocolate

For brewing, distilling & more.

Artisan Natural Infusions *Ideal for brewing.*

Finally, a **shelf stable** (even after opening), **natural alternative to purée!** Ideal for flavoring alcoholic and non-alcoholic beverages, beer & wine, and ANY of your creations. Cut operational costs with our highly concentrated natural flavors—no freezing, thawing, or reduction required.

- Natural flavor
- Natural color
- Preservative-free
- Shelf stable
- No artificial sweeteners

Cut costs by 90%
with our Natural
Purée Alternative
2 oz. Artisan = 24 oz. Fruit Purée

STARTING USE GUIDELINE
0.5-1% by weight
(about 7-14oz by wt. per 10 gallons)
(about 200-400g per 38 liters)

*Economical
Flavorful
Versatile*



**TIPS FOR USING ARTISANS
IN YOUR BREWING ADVENTURES!**

- Start at a low use level, 0.5-1% by weight
- 0.7-1.4 oz by weight Artisan per 1 gallon
- 20-40 g Artisan per 1 gallon
- 615-1230 g Artisan per barrel (31 gallons)
- ALWAYS premix / dissolve Artisan in either beer or warm water before adding to brew. Use equal parts warm water or beer and Artisan to dilute the Artisan so it mixes evenly.

**NEED A LITTLE GUIDANCE?
TRY THESE WINNING COMBINATIONS**

- | | | | |
|---------------|--|-----------------------|---|
| Blonde | Strawberry
Lemon
Pineapple
Blood Orange | Saison | Orange
White Peach
Apricot
Lemon |
| IPA | Passion Fruit
Grapefruit
Blood Orange
Mango | Porter / Stout | Boysenberry
Peanut Butter
S'mores
Coconut
Espresso Coffee |

ARTISAN NATURAL FLAVORS

Ideal for brewing.

ART24-NS Acai-Blueberry
 ART27-V2 Tart Apple
 ART17-NS Apple Pie
 ART69-NS Apple Cider
 ART55-NS Apricot
 ART15-NS Banana
 ART46-NS Wild Berry
 ART59-NS Blackberry
 ART18-NS Blueberry
 ART8-NS Boysenberry
 ART23-NS Bubble Gum
 ART38-NS Birthday Cake
 ART73-NS Calamansi
 ART20-NS Crema di Caramel™
 ART41-NS Salted Caramel
 ART66-V1 Carrot Cake
 ART67-NS Cassis (Blackcurrant)
 ART36-NS Maraschino "Bing" Cherry
 ART60-NS Black Cherry
 ART61-NS Red Sour Cherry
 ART3-NS Chocolate Fudge Brownie
 ART42-NS Cinnamon Bun
 ART57-NS Coconut Cream
 ART21-NS Espresso Coffee
 ART13-NS Cookies & Cream

ART51-NS Cookie Dough
 ART30-NS Cotton Candy
 ART47-NS Cranberry
 ART68-NS Elderberry
 ART48-NS French Toast
 ART45-NS Grape
 ART54-NS Grapefruit
 ART32-NS Guava
 ART4-NS Hazelnut Praline
 ART5-NS Bacio™ Chocolate Hazelnut Praline
 ART71-NS Golden Kiwi
 ART14-NS Lemon
 ART33-NS Lemon Meringue
 ART43-NS Lemonade
 ART25-NS Key Lime
 ART37-NS Lychee
 ART11-NS Mango
 ART52-NS Maple Praline
 ART49-NS Toasted Marshmallow
 ART19-NS Crème de Menthe
 ART64-NS Moscow Mule
 ART39-NS Mud Pie (Mississippi Mud)
 ART44-NS Oatmeal Cookie
 ART9-NS Orange

ART2-NS Blood Orange
 ART26-NS Orange Cream
 ART1-NS Passion Fruit
 ART70-NS Passion-Orange-Guava
 ART12-NS Peach
 ART65-NS White Peach
 ART29-NS Old Fashioned Peanut Butter
 ART63-NS Pear
 ART53-NS Butter Pecan
 ART10-NS Pineapple
 ART35-NS Pistachio Butter
 ART31-NS Pomegranate
 ART50-NS Salted Popcorn
 ART58-NS Purple Sweet Potato (Ube)
 ART72-NS Pumpkin Spice
 ART7-NS Raspberry
 ART16-NS Red Velvet
 ART40-NS Rocky Road
 ART34-NS S'mores
 ART6-NS Wild Strawberry
 ART56-NS Wild Strawberry Rhubarb
 ART62-NS Tangerine
 ART22-NS Vanilla Bean
 ART28-NS Watermelon



Compound Infusions *Ideal for brewing.*

Not only are they versatile and delicious, but economical as well! At your fingertips at all times, Amoretti Compounds are shelf-stable and ready for performance. With most Compounds at a use level of 0.5-1% by weight, flavors are interchangeable and recipes can be standardized with various flavors.

- Shelf stable
- Super concentrated
- Natural flavors

PACKAGING

2.2 lbs jar, 10 lbs tub, 60 lbs bucket.
Larger sizes available, please inquire.

AVAILABLE SIZES:



STARTING USE GUIDELINE

0.5-1% by weight
(about 7-14oz by wt. per 10 gallons)
(about 200-400g per 38 liters)



AMORETTI® COMPOUNDS

- A** 312 Almond
- 303 Amaretto
- 3041 Apple Pie
- 335 Tart Apple
- 3072 Calvados X.O. Type Apple Brandy
- 330 Apricot
- B** 3078 Natural Maple Bacon Type
- 309 Banana
- 3082 Natural Bananas Foster
- 3053 Banana Split
- 3068 Sweet Basil
- 3039 Natural Irish Stout Beer Type
- 343 Bergamot

- 3019-V1 Wild Berry
- 351-V1 Blackberry (Marion Berry)
- 334 Cassis (Blackcurrant)
- 322-V1 Blueberry
- 371 Bourbon Whiskey
- 328-V1 Boysenberry
- 3057 Brandy Natural
- 3079 Eggnog Brandy
- 365 Cognac "French Brandy"
- 3065 Bubble Gum
- 3075 Butter Rum
- 375 Butterscotch

- C** 3024 Cachaça

- 3025 Caipiriña
- 3014 Cajeta
- 3059 Cake Batter (contains gluten)
- 3008 Cantaloupe
- 311 Cappuccino-Tiramisu
- 318 Caramel
- 3090 Salted Caramel
- 3010 Crema di Caramel™
- 399 Chai "Tea"
- 314 Champagne
- 3061 Wild Strawberry Champagne
- 3026 Mascarpone Cheese
- 3069 Natural Cheesecake "Plain"
- 332-V1 Black Cherry

AMORETTI® COMPOUNDS

382	Cherry Blossom (Sakura)
350	Maraschino "Bing" Cherry
302-V1	Red Sour Cherry
385	Roasted Chestnut (refrigerate)
3003	Roasted Chestnut Grand Orange (refrigerate)
395	Chocolate Fudge
3077	Chocolate Fudge Brownie
3035	Chocolate Truffle
3005	Hot Chocolate
310	Dark Chocolate
3009	Milk Chocolate
3052	Mint Chocolate Chip
357	Chocolate-Mocha
380	Chocolate-Raspberry
3016	Swiss Chocolate
372	White Chocolate
3013	Chokecherry
3012	Cinnamon
3055	Natural Coconut Cream
3006	Coconut Rum
3056	Natural Toasted Coconut Cream
3030	Café Latte
3087	Irish Coffee
101	Kona Coffee Fancy Pure
325	Mexican Coffee Liqueur Type
3028	Natural Colorless Coffee
3086	Concord Breeze (Grape-Grapefruit)
3004	Cookies & Cream "Stracciatella"
3048	Cosmopolitan "Cosmo"
370-V1	Cranberry
3040	Crème Brûlée
326	Crème de Menthe
373	Curaçao
3011	Custard "Panna Cotta"
D	3066 Date
	396 Dulce de Leche
E	338 Eggnog
	3079 Eggnog Brandy
	3034 Elderberry
	376 English Toffee
	34 Mocha Espresso Coffee
	3038 Triple Strength Espresso Coffee
F	398 Fiori di Sicilia
G	3031 Gardenia
	353 Gianduia
	381 Ginger
	3017 Gingerbread
	313 Grand Orange
	361 Concord Grape
	3045 Graham Cracker
	367 Grapefruit
	392 Grenadine (Pomegranate)

346-V1	Pink Guava
H	336 Hazelnut Praline
	379 Italian Hazelnut Liqueur Type
	331 Honey
	377 Honeydew Melon
	3088 Horchata
	3027 Hurricane
I	393 Madagascar Bourbon Vanilla Ice Cream
	317 Irish Cream
J	315 Jamaican Rum
	390 Jasmine Egyptian
K	378 Key Lime
	319 Kirsch
	345 Kiwi
L	354 Lavender
	342 Violet Lavender
	396 Dulce de Leche
	3073 Natural Tres Leches
	304 Lemon
	3067 Lemon Verbena
	3060 Meyer Lemon
	324 Lime
	378 Key Lime
	3033-V1 Lingonberry
	384 Lychee
M	386 Macadamia
	391 Mai Tai (natural flavor)
	3080 Mandarin
	307 Mango
	329 Maple
	360 Margarita
	3020 Marshmallow
	3042 Marzipan
	368 Mastic
	3046 Mimosa
	3032 Mojito Mint (just mint, no lime)
	3054 Mojilada® (coconut, mint & lime)
	3023 Mojito Libre® (mint & lime)
	3074 Mud Pie Powder
N	3049 Neapolitan
	358 Nutmeg
O	305 Orange
	321 Orange Blossom
	3051 Orange Cream
	383-V1 Blood Orange
	363 French Orange Liqueur Type
	313 Grand Orange
P	364 Papaya
	320 Passion Fruit
	344 Peach
	308 Pear
	397 Pear Williams
	3063 Butter Pecan

327	Piña Colada
301-V1	Pineapple
5-V1	Pistachio
387	Sweet Potato
362	Natural Red Plum
352-V1	Prickly Pear "Cactus Blossom"
3076	Pumpkin Pie
366	Pumpkin Spice
R	3050 Rainbow Sherbet
	388 Black Raspberry Seedless
	3085 Blue Raspberry
	3029-V1 Raspberry Framboise Seedless
	369 French Black Raspberry Liqueur Type
	13-V1 Red Raspberry Seedless
	3000 Rhubarb
	3062 Root Beer
	337 Rose
S	374 Sambuca
	3022 Roasted Black Sesame Praline
	36-V1 Strawberry
	3047 Strawberry Daiquiri
	3015-V1 Wild Strawberry
	3081 Burnt Sugar
T	394 Tamarind
	3058 Tangelo (Tangerine-Grapefruit)
	306 Tangerine
	3064 Natural Tart
	340 Green Tea
	339 Tequila Gold Añejo
	3044 Tiramisu
	341 Triple Sec
V	3001 Crema di Vanilla® Natural
	3002 Natural French Vanilla
	323 Madagascar Bourbon Vanilla Bean with Tahitian Vanilla Seeds
	3018 Balsamic Vinegar di Amoretti®
	359 Sweet Vermouth
W	389-V1 Black Walnut
	333 Watermelon
	3007 Sweet Scotch Whisky Liqueur Type
	3070 Burgundy Wine
	3071 Chardonnay Wine
	3091 Sangria Wine Type
	3036 Wine Blossom
	3092 Natural Sweet Woodruff Type (AKA "Waldmeister", "Reine de bois", "Asperula")
Z	348 Grand Zabaione
	349 Zuppa Inglese



Extract Infusions *Pre or post brewing.*

Our most-concentrated type of flavors and essential oils of whichever note you're looking for. Perfect for flavoring alcoholic and non-alcoholic beverage, liqueur, beer & wine. Our extracts come in many flavor profiles ranging from fruits, nuts, liqueur notes, spice extractions, and more!

Due to the concentration level of Amoretti Extracts, it is highly advisable to follow the use level guideline.

STARTING USE GUIDELINE

0.01-0.02% by weight
 (about 1.5-3oz by wt. per 111 gallons)
 (about 43-85g per 420 liters)

PACKAGING

2 lbs bottles, 9 lbs gallon, 55 lbs bucket.
Larger sizes available, please inquire.

AVAILABLE SIZES:



AMORETTI® EXTRACTS

- A 1176 Acai Type W.S.
- 1389 Natural Agave Type W.S.
- 1231 Alfalfa W.S.
- 1091 Allspice W.S.
- 1116 Natural Almond W.S.
- 88 Amaretto W.S.
- 639 Ancho Pepper W.S.
- 78 Anise Oil W.S.
- 1015 Baked Apple with Caramelized Sugar W.S.



- 1414 Natural Blood Apple W.S.
- 616 Sweet Apple W.S.
- 1196 Natural Tart Apple W.S.
- 1264 Calvados X.O. Natural Apple Brandy W.S.
- 1318 Natural Apple Cider Type W.S.
- 649 Apple-Cinnamon W.S.
- 1085 Apple Pie with "Crust" W.S.
- 1462 Natural Apricot O.S. (Armenian Type)
- 48 Natural Apricot W.S. (Armenian Type)

- 1248 Natural Avocado Type W.S.
- B 1081 Natural Bacon Type W.S.
- 1299 Natural Maple Bacon Type W.S.
- 684 Balsamic Vinegar di Amoretti® W.S.
- 60 Banana W.S.
- 1218 Natural Banana Powder W.S.
- 1309 Natural Bananas Foster W.S.
- 1164 Banana Split O.S.
- 1301 Natural Barbeque Mesquite Type Seasoning Powder W.S.

AMORETTI® EXTRACTS

1090 Basil Oil W.S.
 676 Bay W.S.
 1044 Natural Roast Beef W.S.
 1077 Natural Irish Stout Beer Type W.S.
 1399 Bergamot Oil W.S.
 93 Saskatoon Berry W.S.
 1411 Natural Sloe Berry (Blackthorn) W.S.
 1470 Natural Wild Berry W.S.
 531 Maraschino "Bing" Cherry W.S.
 606 Natural Biscotti Plain W.S.
 71 Blackberry W.S.
 1220 Natural Blackberry Type Powder W.S.
 67 Cassis (Blackcurrant) W.S.
 1282 Natural Bloody Mary Seasoning Powder W.S.
 45 Blueberry W.S.
 1262 Natural Blueberry Type W.S.
 1307 Natural Blueberry Pie W.S.
 520 Natural Bourbon Whiskey W.S.
 510 Boysenberry W.S.
 1191 Natural Brandy W.S.
 537 Cognac "French Brandy" 88% W.S.
 4186 Grand Orange Brandy W.S.
 1053 Baked Bread W.S.
 1373 Natural Sweet Hawaiian Bread Roll W.S.
 1056 Broccoli W.S.
 1214 Bubble Gum W.S.
 87 Butter Extract O.S.
 1249 Natural Brown Butter O.S.
 625 Natural Water Buffalo Butter O.S.
 1230 Natural Butter Pecan W.S.
 7687 Butter Rum O.S.
 529 Butterscotch W.S.
 1280 Natural Butterscotch W.S.

C

1018 Cachaça W.S.
 1030 Café Latte W.S.
 637 Caffeine Powder W.S. (100 fold)
 1239 Caipiriña W.S.
 686 Cajeta W.S.
 1397 Cake Batter W.S. (Pareve)
 1268 Natural Birthday Cake W.S.
 1179 Cotton Candy W.S.
 1009 Cantaloupe W.S.
 99 Cappuccino-Tiramisu W.S.
 587 Capsicum Extra Hot Pepper W.S.
 66 Caramel W.S. (100 fold)
 521 Caramel W.S.
 679 Crema di Caramel™ W.S.
 1308 Natural Salted Caramel Powder W.S.
 534 Caraway Oil O.S.
 1093 Cardamom W.S.
 1082 Carrot W.S.
 1357 Carrot Cake W.S.



96 Cashew W.S.
 1094 Celery W.S.
 648 Chai "Tea" W.S.
 59 Champagne W.S.
 1137 Marc de Champagne W.S.
 1228 Natural Wild Strawberry Champagne W.S.
 1281 Natural Char Extract W.S.
 667 Asiago Cheese W.S.
 1122 Natural Brie Cheese W.S.
 611 Cream Cheese W.S.
 1194 Natural Cream Cheese W.S.
 668 Feta Cheese Type Powder W.S.
 1022 Mascarpone Cheese W.S.
 605 Cheesecake "Plain" W.S.
 1193 Natural Cheesecake "Plain" W.S.
 634 Cherimoya W.S.
 1423 Natural Cherry Cola W.S.
 62 Cherry Extract Sour W.S.
 621 Cherry Extract Sweet W.S.
 599 Cherry Blossom (Sakura) W.S.
 518 Natural Black Cherry W.S.
 1052 Roasted Chickpea (Garbanzo Bean) W.S.
 1329 Natural Sriracha (Hot Chili Sauce) W.S.
 1333 Natural Sriracha (Hot Chili Sauce) Powder W.S.
 1120 Chipotle Pepper W.S.
 72 Chocolate "Crème de Cacao" W.S.
 655 Chocolate Fudge W.S.
 1263 Natural Chocolate W.S.
 1289 Natural Chocolate Brownie W.S.
 1390 Natural Chocolate Chip W.S.
 658 Hot Chocolate W.S.
 675 Milk Chocolate W.S.
 1468 Natural Mint Chocolate Chip W.S.
 696 Swiss Chocolate W.S.
 1095 Cilantro W.S.
 678 Cinnamon W.S.
 1271 Natural Cinnamon Bun W.S.
 1146 Cinnamon Latte W.S.
 649 Apple-Cinnamon W.S.
 1096 Clove W.S.
 1186 Natural Coconut Cream W.S.
 1188 Natural Toasted Coconut Cream W.S.
 660 Coconut Rum W.S.
 1020 Natural Colorless Coffee W.S.
 77 Espresso Coffee W.S.
 1342 Natural Irish Coffee W.S.
 508 Natural Mexican Coffee Liqueur Type W.S.
 1209 Cola W.S.
 532 Concord Grape W.S.
 90 Condensed Milk W.S.
 654 Cookie & Cream "Stracciatella" W.S.
 1001 Cookie Dough W.S.

1331 Natural Speculoos Cookie W.S.
 1097 Coriander W.S.
 577 Sweet Corn W.S.
 1144 Cosmopolitan "Cosmo" W.S.
 1179 Cotton Candy W.S.
 92 Cranberry W.S.
 1006 Heavy Cream W.S.
 1089 Natural Crème Brûlée W.S.
 1190 Natural Cucumber W.S.
 1098 Cumin W.S.
 557 Curaçao W.S.
 1061 Curry Oil O.S.
 680 Custard "Panna Cotta" W.S.
 544 Cooked Custard W.S.

D

1142 Strawberry Daiquiri W.S.
 578 Date W.S.
 540 Dill Weed Oil O.S.
 626 Dr. Sarsaparilla W.S.
 1431 Natural Dragon Fruit W.S.
 646 Dulce de Leche W.S.



E

644 Natural Roasted Eggplant W.S.
 505 Natural Egnog W.S.
 1055 Elderberry Blossom W.S.
 1336 Natural Elderberry "Sambuco" Type W.S.
 1079 Natural Elderflower W.S.
 1321 Natural Energy Drink *Type M* W.S.
 1240 Natural Energy Drink *Type R* W.S.
 100 English Toffee W.S.
 1279 Natural English Toffee W.S.
 77 Espresso Coffee W.S.
 1229 Natural Eucalyptus W.S.

F

1099 Fennel W.S.
 570 Fenugreek W.S.
 511 Natural Fig W.S.
 612 Fiori di Sicilia W.S.
 1012 Fir Needle Siberian O.S.
 1246 Natural French Toast Type W.S.
 1349 Natural Fruit Cocktail Type W.S.

G

581 Gardenia W.S.
 1109 Garlic W.S.
 1035 Geranium Oil O.S.
 522 Ginger W.S.
 1328 Organic Ginger W.S.
 1272 Natural Ginger Ale Type W.S.
 697 Gingerbread W.S.
 1178 Gojiberry Type W.S.
 677 Natural Gooseberry W.S.
 1149 Natural Graham Cracker W.S.
 1372 Natural Grapefruit Zest Oil W.S.
 532 Concord Grape W.S.

continued...

AMORETTI® EXTRACTS

<p>1045 Pomegranate (Grenadine) W.S. (all natural)</p> <p>1046 Pomegranate (Grenadine) W.S. (all natural-natural color added)</p> <p>558 Guanabana Fruit W.S. (Soursop)</p> <p>600 Natural Guarana W.S.</p> <p>1460 Natural Guava O.S.</p> <p>52 Natural Guava W.S.</p> <hr/> <p>H 689 Natural Habanero Hot Pepper W.S.</p> <p>1364 Habanero Pepper Powder W.S. (100X)</p> <p>1244 Natural Ham Hock (Roasted Ham) Type W.S.</p> <p>503 Italian Hazelnut Liqueur Type W.S.</p> <p>538 Praline Hazelnut W.S.</p> <p>561 Hibiscus W.S.</p> <p>563 Natural Hickory Barbeque W.S.</p> <p>519 Natural Honey W.S.</p> <p>85 Honeydew Melon W.S.</p> <p>1350 Natural Horchata W.S.</p> <p>1111 Horseradish W.S.</p> <p>1110 Louisiana Hot Sauce W.S.</p> <p>501 Huckleberry W.S.</p> <hr/> <p>I 695 Indian Spice O.S.</p> <p>1400 Irish Cream W.S.</p> <hr/> <p>J 550 Jackfruit W.S.</p> <p>1370 Jalapeño Pepper W.S.</p> <p>1363 Jalapeño Pepper Powder W.S.</p> <p>76 Jamaican Rum W.S.</p> <p>1070 Jasmine Egyptian W.S.</p> <p>1354 Natural Juniper Berry Terpeneless W.S.</p> <hr/> <p>K 91 Key Lime W.S.</p> <p>524 Kirsch W.S.</p> <p>79 Kirshwasser W.S.</p> <p>56 Kiwi W.S.</p> <p>1430 Natural Kombucha W.S.</p> <p>601 Kumquat Zest Oil O.S.</p> <hr/> <p>L 690 Lavender Oil O.S.</p> <p>83 Violet Lavender W.S.</p> <p>49 Lemon W.S.</p> <p>1319 Natural Lemon W.S.</p> <p>1126 Meyer Lemon W.S.</p> <p>1379 Lemongrass Oil W.S.</p> <p>1153 Natural Lemon Verbena Type Oil O.S.</p> <p>1368 Natural Mountain Spring Lemon Lime Soda Type W.S.</p> <p>1157 Natural "Yuzu" Type Lemon Juice W.S. (salted)</p> <p>1409 Natural Yuzu Lemon Oil W.S. (unsalted)</p> <p>1386 Lemon Zest Oil W.S.</p> <p>1325 Organic Lemon Zest Oil O.S.</p> <p>602 Natural Licorice O.S.</p> <p>1352 Natural Red Licorice W.S.</p>	<p>97 Natural Lime W.S.</p> <p>1378 Lime Zest Oil W.S.</p> <p>1388 Kaffir Lime Oil W.S.</p> <p>91 Key Lime W.S.</p> <p>685 Limoncello W.S.</p> <p>1038 Lingonberry W.S.</p> <p>586 Lychee W.S.</p> <hr/> <p>M 542 Natural Macadamia W.S.</p> <p>620 Mai Tai W.S.</p> <p>1040 Malt W.S.</p> <p>1041 Malted Milk W.S.</p> <p>1393 Mandarin Zest Oil W.S.</p> <p>55 Mango W.S.</p> <p>1266 Ripe Mango W.S.</p> <p>1177 Mangosteen Type W.S.</p> <p>95 Maple W.S.</p> <p>546 Margarita W.S.</p> <p>1100 Marjoram W.S.</p> <p>543 Sicilian Marsala Wine Type W.S.</p> <p>1010 Marshmallow W.S.</p> <p>1200 Natural Toasted Marshmallow W.S.</p> <p>1113 Marzipan W.S.</p> <p>1022 Mascarpone Cheese W.S.</p> <p>567 Mastic Oil O.S.</p> <p>1247 Natural Mayonnaise Type O.S.</p> <p>1039 Milk W.S.</p> <p>1139 Mimosa W.S.</p> <p>1468 Natural Mint Chocolate Chip W.S.</p> <p>1033 Mojito Mint Extract W.S. (just mint, no lime)</p> <p>1169 Mojilada® O.S. (coconut, mint & lime)</p> <p>1025 Mojito Libre® W.S. (mint & lime)</p> <p>584 Molasses W.S.</p> <p>1330 Natural Moroccan Spice Blend Powder</p> <p>1385 Natural Moscow Mule W.S.</p> <p>1269 Natural Mud Pie (Mississippi Mud) W.S.</p> <p>666 Mushroom Porcini W.S.</p> <p>1237 Natural Mushroom Porcini W.S.</p> <p>571 Mustard Oil O.S.</p> <hr/> <p>N 1160 Neapolitan O.S.</p> <p>1101 Nutmeg W.S.</p> <p>1327 Natural Nutty W.S.</p> <hr/> <p>O 1278 Natural Oatmeal Cookie W.S.</p> <p>1107 Onion W.S.</p> <p>1108 Green Onion W.S.</p> <p>43 Orange W.S.</p> <p>1182 Natural Orange Extract W.S.</p> <p>1172 Natural Blood Orange W.S.</p> <p>527 Orange Blossom W.S.</p> <p>1392 Orange Cream W.S.</p> <p>1129 Orange Zest W.S.</p> <p>556 French Orange Liqueur Type W.S.</p> <p>41WS Grand Orange W.S.</p>	<p>693 Grand Orange V.S.O.P. W.S.</p> <p>694 Grand Orange X.O. W.S.</p> <p>4186 Grand Orange Brandy W.S.</p> <p>1102 Oregano W.S.</p> <hr/> <p>P 1125 Panda (Pandan Leaf) W.S.</p> <p>566 Panettone O.S.</p> <p>58 Papaya W.S.</p> <p>82 Natural Paprika Oil O.S.</p> <p>1114 Parsley W.S.</p> <p>53 Passion Fruit W.S.</p> <p>1459 Natural Passion-Orange-Guava W.S.</p> <p>1052 Roasted Chickpea (Garbonzo Bean) W.S.</p> <p>61 Peach W.S.</p> <p>1183 Natural Peach Powder W.S.</p> <p>1384 White Peach W.S.</p> <p>1355 Natural Peanut W.S.</p> <p>1356 Natural Roasted Peanut W.S.</p> <p>51 Pear W.S.</p> <p>1195 Natural Pear Williams W.S.</p> <p>509 Natural Pecan W.S.</p> <p>1230 Natural Butter Pecan W.S.</p> <p>1257 Natural Toasted Butter Pecan W.S.</p> <p>1185 Natural Roasted Red Bell Pepper W.S.</p> <p>1092 Black Pepper Decolorized W.S.</p> <p>1106 White Pepper W.S.</p> <p>1295 Peppermint W.S.</p> <p>589 Natural Persimmon W.S.</p> <p>1306 Natural Pie W.S.</p> <p>1283 Natural Pie Crust W.S.</p> <p>68 Piña Colada W.S.</p> <p>54 Pineapple W.S.</p> <p>40 Pistachio W.S.</p> <p>633 Natural Pistachio W.S.</p> <p>1256 Natural Toasted Pistachio W.S.</p> <p>513 Plum W.S.</p> <p>1424 Natural PM's Liqueur W.S.</p> <p>1045 Pomegranate (Grenadine) W.S. (all natural)</p> <p>1046 Pomegranate (Grenadine) W.S. (all natural-natural color added)</p> <p>1261 Natural Pomegranate Type W.S.</p> <p>1298 Organic Natural Pomegranate Type W.S.</p> <p>1323 Natural Popcorn W.S.</p> <p>574 Port Wine W.S.</p> <p>614 Potato W.S.</p> <p>615 Sweet Potato W.S.</p> <p>538 Praline Hazelnut W.S.</p> <p>1377 Natural Pretzel Type W.S.</p> <p>560 Prickly Pear "Cactus Blossom" (Tunas) W.S.</p> <p>622 Natural Prune W.S.</p> <p>506 Natural Pumpkin W.S.</p> <p>1290 Natural Pumpkin W.S.</p> <p>1275 Natural Pumpkin Pie W.S.</p> <p>1285 Natural Pumpkin Pie Sauce W.S.</p>
---	--	--



AMORETTI® EXTRACTS



- 1151 Natural Pumpkin Spice W.S.
665 Punch W.S.
- R** 1471 Natural Rainbow "S" Type W.S.
1215 Rainbow Sherbet W.S.
576 Raisin W.S.
1155 Ranch Type Powder W.S.
42 Raspberry W.S.
1028 Raspberry Framboise W.S.
580 Raspberry Natural W.S.
572 Black Raspberry W.S.
573 French Black Raspberry Liqueur Type W.S.
650 Rhubarb W.S.
1270 Natural Rocky Road W.S.
514 Natural Root Beer W.S.
526 Natural Rose Oil W.S.
1103 Rosemary W.S.
670 Clarified Rosemary Oil O.S.
1297 Natural Spice Rum W.S.
- S** 687 Saffron "All Red" W.S.
1057 Sage Dalmatian W.S.
1425 Natural Salep (Sahleb) W.S.
1131 Liquid Salt Concentrate W.S.
93 Natural Saskatoon Berry W.S.
1436 Natural Schisandra Berry W.S.
1437 Natural Sea Buckthorn W.S.
1014 Roasted Black Sesame W.S.
1253 Natural Cream Sherry W.S.
1422 Happy Smokers W.S.
1351 Natural S'mores W.S.
1072 Sour Cream Natural W.S.
1300 Natural Sour Cream & Onion Seasoning Type W.S.
1054 Sourdough W.S.
1156 Natural Sour Flavor W.S.
64 Spearmint O.S.
1331 Natural Speculoos Cookie W.S.
695 Indian Spice O.S.
1330 Natural Moroccan Spice Blend Powder
1213 Natural Butternut Squash O.S.
1329 Natural Sriracha (Hot Chili Sauce) W.S.
1333 Natural Sriracha (Hot Chili Sauce) Powder W.S.
1359 Natural Starfruit W.S.
1128 Strawberry Natural W.S.
44 Wild Strawberry W.S.
1203 Strega Type O.S.
1338 Brown Sugar W.S.
1088 Burnt Sugar W.S.
1305 Natural Sugar Cone W.S.
- T** 1302 Natural Tahini O.S.
636 Tamarind W.S.
1204 Tangelo (Tangerine Grapefruit) O.S.
50 Tangerine Orange W.S.



- 1104 Tarragon W.S.
562 Tea W.S.
1087 Natural Chamomile Tea O.S.
512 Green Tea W.S.
1037 Caza™ Tequila de Agave Type W.S.
530 Tequila Gold Añejo W.S.
1243 Natural Tequila Gold Añejo W.S.
1175 Teriyaki Type W.S.
1429 Natural Terpene W.S.
1105 Thyme W.S.
1326 Natural Toffee Nut W.S.
641 Sundried Tomato Powder W.S.
1205 Natural Tonka Bean Type O.S.
1265 Natural Tres Leches W.S.
80 Triple Sec W.S.
630 Black Truffle W.S.
1132 White Truffle W.S.
- V** 691 Vanilla Butter W.S.
1165 Natural Vanilla Butter W.S.
1365 Natural Vanilla Ice Cream W.S.
651 Natural Crema di Vanilla® W.S.
652 French Vanilla Natural W.S.
1267 Natural French Vanilla W.S.
1032 Vanilla Caviar® Madagascar Bourbon W.S.
1216 Vanilla Madagascar Bourbon W.S. (1x)
500 Vanilla Madagascar Bourbon W.S. (2x)
595 Vanilla Madagascar Bourbon with Specks W.S. (2x)
75 Vanilla Madagascar Bourbon W.S. (20x)
683 Vanilla Madagascar Bourbon with Specks W.S. (20x)
1233 Vanilla Madagascar Bourbon "European Style" W.S. (2x)
1345-V1 Vanilla Madagascar Bourbon "European Style" W.S. (with alcohol)
699 Vanilla Madagascar Bourbon "European Style" W.S. (20x)
1000 Vanilla Madagascar Bourbon "European Style" with Specks W.S. (20x)
545 Vanilla Madagascar Bourbon with Tahitian Vanilla Seeds W.S. (20x)
1002 Vanilla Tahitian W.S. (2x)
1004 Vanilla Tahitian W.S. (20x)
1003 Vanilla Tahitian with Specks W.S. (2x)
1005 Vanilla Tahitian with Specks W.S. (20x)
1234 Vanilla Tahitian "European Style" W.S. (2x)
1235 Vanilla Tahitian "European Style" W.S. (20x)
1293 Vanillin Natural W.S. (2x)
1294 Vanillin Natural W.S. (10x)
1180 Natural Vanillin Powder W.S.
535 Vermouth W.S.
684 Balsamic Vinegar di Amoretti® W.S.



- 1159 Violet O.S.
- W** 63 Walnut W.S.
507 Black Walnut W.S.
504 Watermelon W.S.
1219 Natural Watermelon Powder W.S.
520 Natural Bourbon Whiskey W.S.
1201 Natural Scotch Whisky Type W.S.
664 Sweet Scotch Whisky Liqueur Type W.S.
1470 Natural Wild Berry W.S.
1063 Burgundy Wine W.S.
1346 Natural Cabernet Sauvignon Wine Type W.S.
1062 Natural Chardonnay Wine W.S.
1259 Natural Cooking Wine Type W.S.
638 "Eiswein" Wine W.S.
1315 Natural Madeira Wine Type W.S.
543 Sicilian Marsala Wine Type W.S.
1296 Natural Merlot Wine Type W.S.
1254 Natural Salty Mirin Wine Type W.S.
1255 Natural Sweet Mirin Wine Type W.S.
1344 Natural Pinot Grigio Wine Type O.S.
574 Natural Port Wine W.S.
1432 Natural Rosé Wine W.S.
1260 Natural Sake Wine Type W.S.
1360 Natural Sangria Wine Type W.S.
1475 Natural Sauvignon Blanc Wine Type W.S.
73 White Wine W.S.
1369 Natural Wintergreen W.S.
1367 Natural Sweet Woodruff Type W.S. (AKA "Waldmeister", "Reine des bois", "Asperula")
- Y** 1277 Natural Yeast W.S.
674 Yogurt Plain W.S.
1157 Natural "Yuzu" Type Lemon Juice W.S. (salted)
1409 Natural Yuzu Lemon Oil W.S. (unsalted)
- Z** 568 Zabaione W.S.
559 Zarzamora Berry W.S.



Our goal: *Perfection*

As seen in *Pastry Art & Design* magazine: Now and then a hardworking visionary comes along and defines the goals and standards of an entire generation. Among ingredient manufacturers, Amoretti® is that company, and Jack Barsoumian, master creator (CEO), his wife Maral (Marketing President), and brother Ara (Manufacturing President), are the people behind it.

With an international reach and appeal, Amoretti supplies renowned breweries, distilleries, cideries, patisseries, chocolatiers, ice creameries, five star hotels, restaurants, gourmet coffee chains, fortune 500 industrial bakeries, and royal palaces throughout the world.

“It’s more Art than Science”

—*Jack Barsoumian*
Founder, Master Creator, CEO

According to Barsoumian, “These ingredients were created not for profit, but for perfection.” With that philosophy at hand, Barsoumian created over one thousand uncompromised ingredient masterpieces in less than a decade, as he calls it, “from 1 to 1,000 in less than 10 years”—a feat that no one else can claim, given that he is self made and self educated in this field.

“My Mom did not give me any recipes,” he says and smiles. Armed with organic chemistry and cell molecular biology, the twice National Dean’s list holder says, “it’s more art than science”.



Maral Barsoumian, Marketing President & Jack Barsoumian, CEO

Our product offering currently includes hundreds of beverage ingredients each bearing the hallmarks of an Amoretti product: premium ingredients, brilliant flavor, freshness, and consistency.

Welcome to the world of Amoretti®!



What's behind the name *Amoretti*?

Amoretti comes from the word *amore* in Italian, which means love. Amoretti, at least our definition of it, means 'little love'. When founded nearly thirty years ago, this company was our little love, and it still is today. Yes, we are romantics at heart.

Straight Use, Liqueur Concentrates & Flambés

LIQUEUR FLAMBÉS

935	Almond	938	Eggnog	91046	Pomegranate Baci Bella Tini™
988	Amaretto di Amoretti	910	Crema di Gianduja™	942	Raspberry
978	French Star Anise Type	9538	Hazelnut Praline	973	French Black Raspberry Type
960	Crema de Banana	903	Italian Hazelnut Type	957	Rose
986	Brandy	970	Irish Cream	976	Jamaican Rum
937	Cognac "French Brandy"	924	Kirsch	9431	San Marzano Type
91018	Cachaça	997	Limecello	944	Wild Strawberry
91019	Caipiriña	949	Limoncello	91203	Strega "Type"
999	Cappuccino-Tiramisu	943	Sicilian Marsala Wine Type	91037	Caza™ Tequila de Agave Type
959	Fleur de Champagne	969	Crème de Menthe	9530	Tequila Gold Añejo
931	Maraschino "Bing" Cherry	956	French Orange Type	980	Triple Sec
972	Chocolate "Crema de Cacao"	941	Grande Orange	952	Vanilla Bouquet
97684	Coconut Rum	9693	Grand Orange V.S.O.P.	951	Crema di Vaniglia®
977	Espresso Coffee	9694	Grande Orange X.O.	920	Bourbon Whiskey
908	Mexican Coffee Type	9051	Pear	91201	Scotch Whisky Type
937	Cognac "French Brandy"	940	Pistachio	9662	Sweet Scotch Whisky Type
992	Cranberry	9144	Crema di Pistachio™		
		9513	Plum Dessert Wine		

LIQUEUR CONCENTRATES

835	Almond	808	Mexican Coffee Type	8694	Grand Orange X.O.
888	Amaretto	8654	Cookies & Cream	84186	Grand Orange Brandy
878	Anise	8537	Cognac "French Brandy"	851	Pear Williams
8692	Star Anise Oil Terpeneless	8689	Habanero Hot Pepper	842	Raspberry
824	French Star Anise Type	803	Italian Hazelnut Type	8573	French Black Raspberry Type
848	Apricot	870	Irish Cream	8526	Rose
860	Banana	876	Jamaican Rum	8695	Indian Spice
886	Brandy	8524	Kirsch	81037	Caza™ Tequila de Agave Type
81018	Cachaça	8690	Lavender	8530	Tequila Gold Añejo
81019	Caipiriña	81034	Mojito Mint (just mint, no lime)	8652	French Vanilla
859	Champagne	81169	Mojilada® (coconut, mint & lime)	800	Vodka
872	Chocolate "Crème de Cacao"	81026	Mojito Libre® (mint & lime)	820	Bourbon Whiskey
8658	Hot Chocolate	856	French Orange Type	81201	Scotch Whisky Type
823	Coconut Rum	841	Grand Orange	843	Sicilian Marsala Wine Type
		8693	Grand Orange V.S.O.P.		

MOLASSES, JUICE CONCENTRATES & NECTARS *Single-source ingredients.*

AO-191	Clear Color Pure Organic Agave Nectar	AO-106	Amber Color Pure Organic Agave Nectar	260	Raisin Molasses
AO-192	Light Color Pure Organic Agave Nectar	157	Date Molasses	186	Natural Pomegranate Molasses
		268	Natural Sugar Molasses	199	Tamarind Juice Concentrate

STRAIGHT USE

145	Natural Bitters for bar use	187	Maraschino Syrup	760	Natural Light Tapioca Syrup
148	Liquid Marron Glacée "Chestnut"	266	Natural Orange Blossom Water	280	Natural Rosé Wine Syrup
176	Fiori di Sicilia Syrup	265	Natural Bulgarian Rose Water	790	Natural Woodruff
188	Jasmine Syrup	43129778	Liquid Sugar	127	Natural "Yuzu" Type Lemon Juice Flavor (salted)
		AS-761	Sugar Free Sweetener		

TRUSTED BY AMORETTI®



TANGLED ROOTS BREWING CO Ottawa, IL



BIVOUAC CIDERY San Diego, CA



WESTPORT WINERY GARDEN RESORT Aberdeen, WA



OCEAN'S DAUGHTER DISTILLERY Aberdeen, WA



THREE NOTCHED BREWING CO Charlottesville, VA



OCEAN LAB BREWING CO San Juan, Puerto Rico

& MANY MORE!

BEER

★★★★★ Amoretti® Blood Orange Craft Purée

Verified **Awesome Discovery!**

“...Dylan answered the phone. He explained the difference in some of their products (Purée, Artisans, Compound) and took the time to make sure I had what I needed to make strategic decisions ...Flavoring pints turned into flavoring kegs, flavor kegs has turned into flavoring the entire brite tank! You can easily infuse a pint or an entire batch. The quality and consistency of Amoretti’s Craft Purees and Artisans is simply amazing and fun to experiment with! Blood Orange Wheat? French Toast Imperial Stout? Habanero/Pineapple Double IPA? ...I’m constantly playing with new flavors and my tap room patrons love being a part of the research! Kudos to Dylan and the Amoretti team for great advice and superior product!”

Ray Ballard, Brew Master @ Y Bridge Brewing Co. 05/03/2019

KOMBUCHA

★★★★★ Amoretti® Natural Wild Strawberry Artisan Flavor

Verified **Used in Kombucha 2nd ferment!**

“I had originally bought an 8 oz wild strawberry fruit purée at a local beer supply store. I used it in the second ferment of my kombucha and, wow, awesome! So I ordered much more straight from the company! I put 1 tbsp in a 16 oz bottle to ferment. I haven’t added any more sugar with it but I could to make it sweeter. But this suits me just fine! The flavor is out of this world!”

Debora Wynn 08/07/2019

LEMONADE

★★★★★ Amoretti® Natural Blood Orange Artisan Flavor

Verified **Great product!**

“When I first cracked open the jar, the first thing I noticed was the aroma- rich and heavenly! Then I added some to a pitcher of my homemade lemonade. The flavor is on-point and the color gave a lovely rosey blush to the mix. A little goes a long way, so I’m going to have fun adding this to all sorts of things!”

Marianne Rose 05/14/2019

PROTEIN SHAKE

★★★★★ Amoretti® Natural Cotton Candy Artisan Flavor

Verified **Protein shake delight!**

“I added cotton candy flavor to my vanilla protein shake. Tastes too good to be healthy! Can’t wait to try more flavors!”

Ri Teref-Ta 05/11/2019

SELTZERS, COCKTAILS, CIDERS & MORE

SIGN UP FOR OUR BI-WEEKLY NEWSLETTER



- Get **15% off** your first order
- Save big with our on-going promotions
- Be the first to know about new items
- Enjoy instructional videos, top recipes, giveaways and much more!

VISIT [AMORETTI.COM/PAGES/NEWSLETTER-SIGNUP](https://www.amoretti.com/pages/newsletter-signup) TODAY!

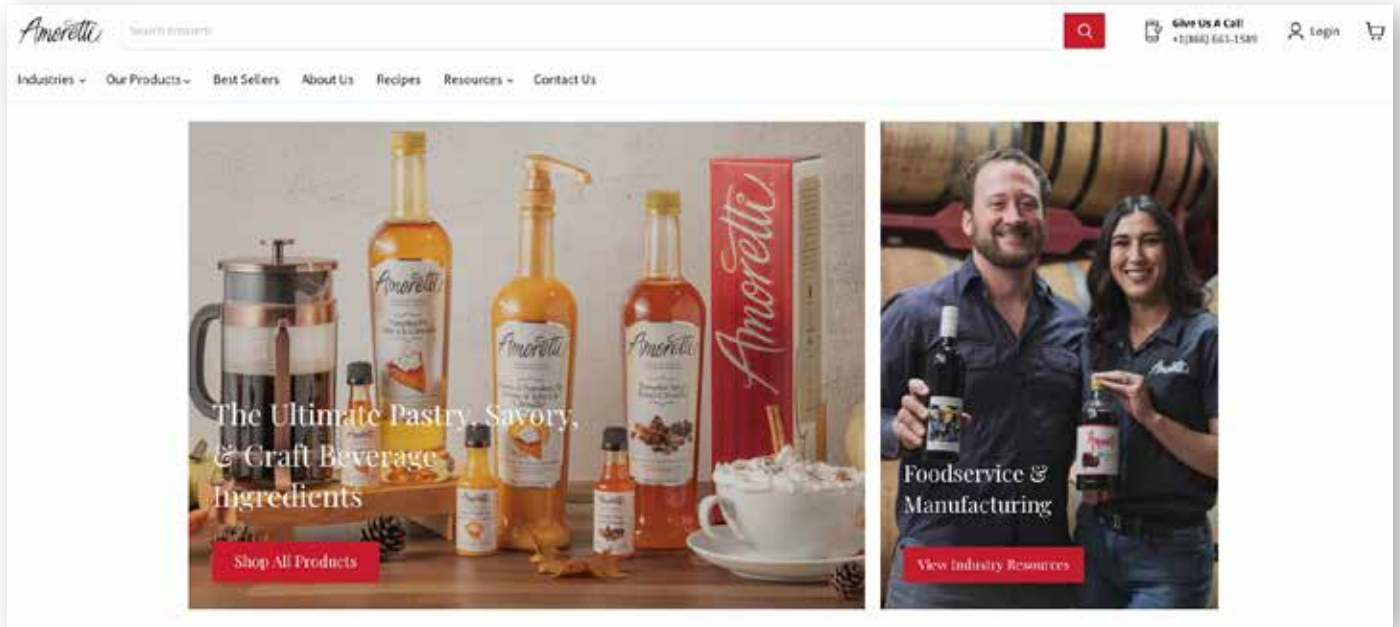
For over 30 years, Amoretti has been creating winning flavors for the world's top chefs, chocolatiers, and pastry wizards. When the US Pastry Team won the World Pastry Championships, that was us. You name it, we've flavored it!



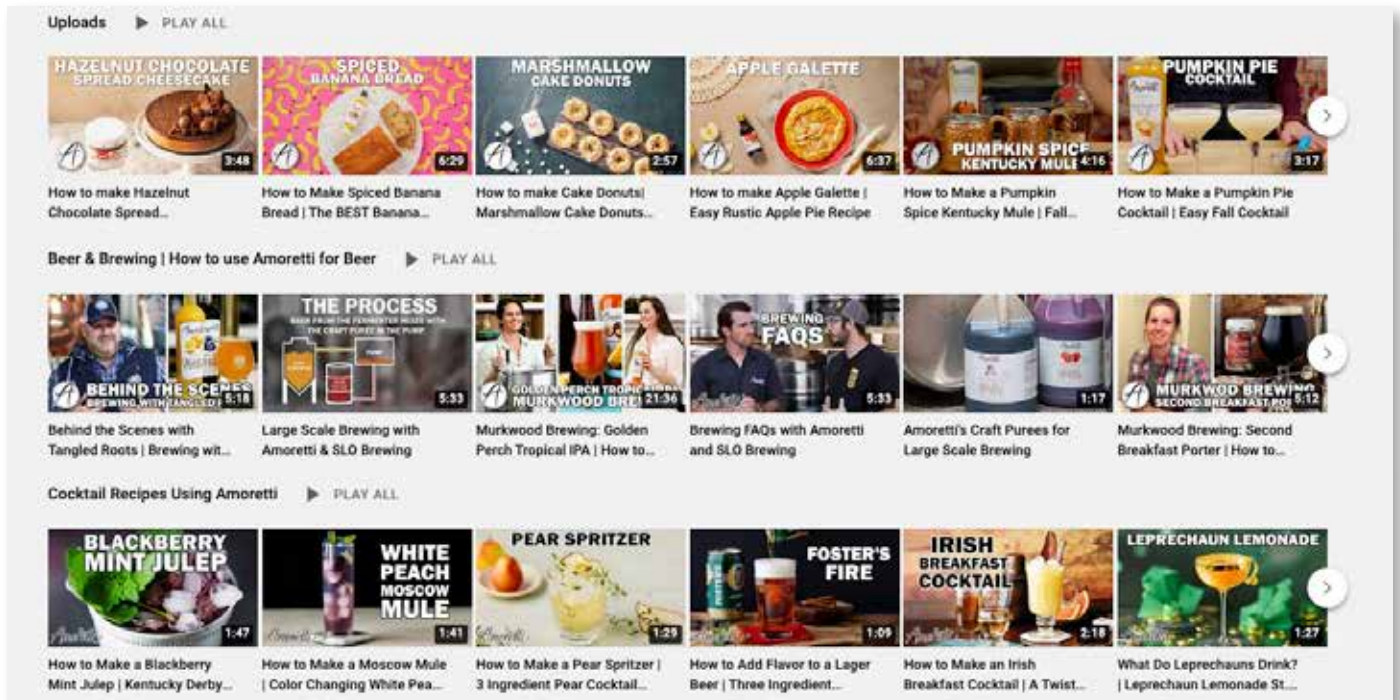
Flavoring for beer. Revolutionary in concept and delicious in execution.

VISIT [AMORETTI.COM/PAGES/BREWING-RESOURCES](https://www.amoretti.com/pages/brewing-resources) FOR MORE INFO!

Visit us at **Amoretti.com!**



Find recipes online
Youtube **@AmorettiTestKitchen**



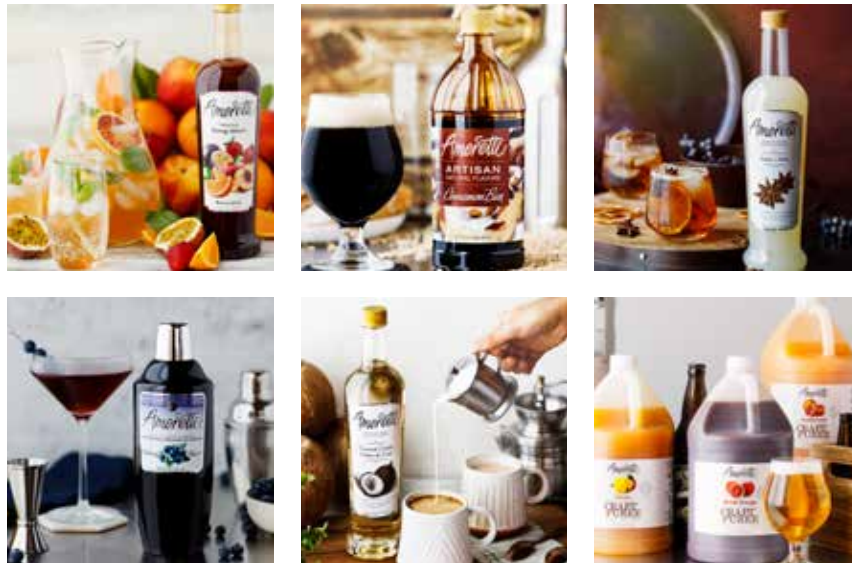


Ultimate Manufacturer of Brewers' Natural Infusions, Craft Purée® & Concentrates

Over the past 30 years, the Amoretti® name has come to be synonymous with quality. Our ingredients are created for perfection, not profit, and we measure our success by that of our customers'.

Unleash the power of your imagination with Amoretti's infinite number of flavor combinations, and still maintain economic feasibility, because with Amoretti ingredients, a little goes a long way.

We consider our customers part of the Amoretti family. In order to ensure your success, we offer personalized assistance when ordering, no minimums, and prompt delivery. Welcome to the world of Amoretti!



Amoretti

www.Amoretti.com • USA: 855-855-3505 • brewers@amoretti.com



TWITTER
@Amoretti



INSTAGRAM
@Amoretti



YOUTUBE
@AmorettiTestKitchen



FACEBOOK
@Amoretti

EMPOWERING YOUR IMAGINATION