

LEATHERS & FABRICS

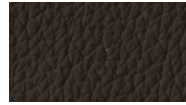
Martel Leather | 100% Leather



920 Black



921 Cognac

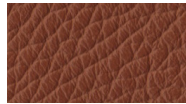


923 Dark Brown

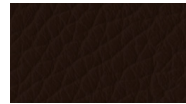
Toledo Leather | 100% Leather



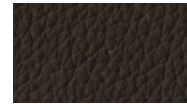
800 Black



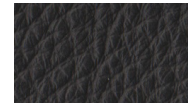
801 Cognac



802 Mocca

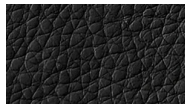


804 Dark Brown

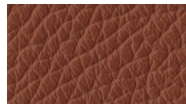


806 Grey

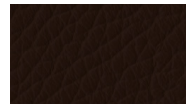
Luna Leather | 100% Leather



700 Black

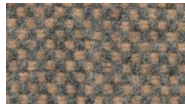


701 Cognac

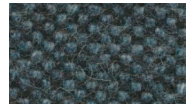


702 Mocca

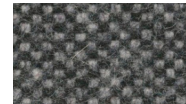
Mahoga | 70% Recycled Wool / 20% PL / 5% PA / 5% PC



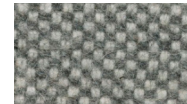
850 Caramel Grey



851 Dark Blue

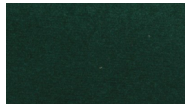


852 Dove Grey



853 Seal Grey

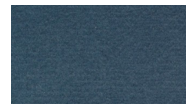
Velvet | 100% Polyester



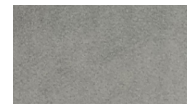
183 Green



185 Blue



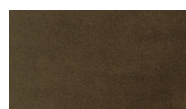
186 Petrol



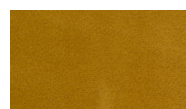
187 Light Grey



544 Brick Red



547 Army



602 Ocre

Twist | 100% Polyester



565 Granite

Mixed Dance | 100% Polyester



525 Light Blue

Kenya | 100% Polyester



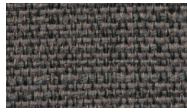
577 Dark Grey



578 Taupe

LEATHERS & FABRICS

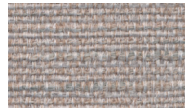
Ramo | 60% Polyester, 25% Acetate, 15% Polypropylene | Oeko-Tex®



161 Anthracite



162 Blue



163 Light Grey

Larmory | 100% Polyester



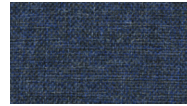
130 Anthracite



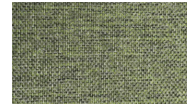
131 Sand



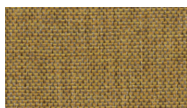
132 Light Grey



133 Blue



134 Green



135 Curry



136 Dark Grey



137 Stone Grey

LEG FINISHES



Oak, Soap



Oak, Lacquer



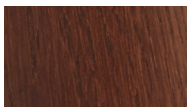
Oak, White Oil



Beech, Soap



Oak, Smoked



Oak, Dark Stained



Oak, Black