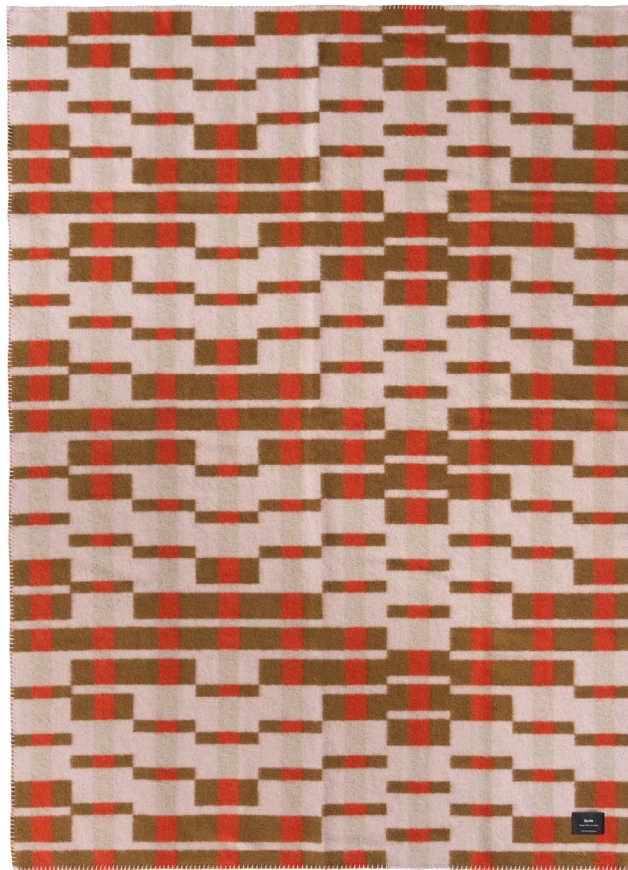


# Vienna Throw

by Arthur Arbesser

For his fourth textile design for Hem, Arthur Arbesser returns to his origins and draws the inspiration Vienna's design history. Inspired by the designs of Josef Hoffman and the Wiener Werkstätte, the Vienna Throw is woven from thick 100% New Zealand wool. The throws are available in a deep-sea green and black, a contrasty cream and black, and a colorful poppy and pastel-pink.

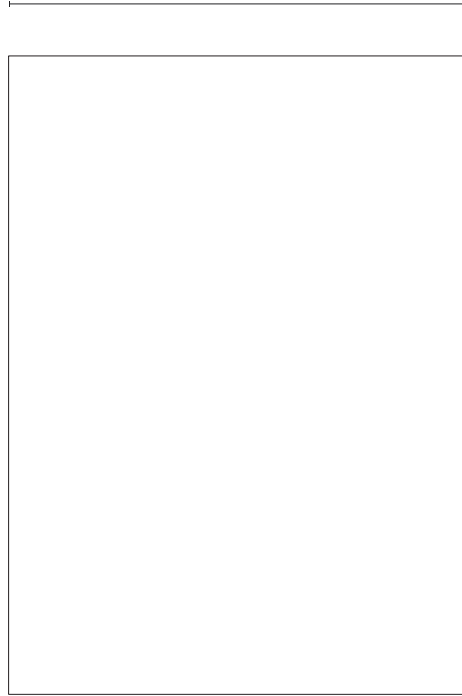


**hem**

## Technical Specifications

Unfolded 1300 × 1800 mm

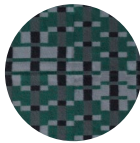
1300



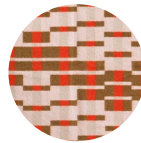
1800

## Materials and Colors

100% New Zealand lambswool (440g/sqm)  
Produced in Lithuania



Alga



Poppy



Mist