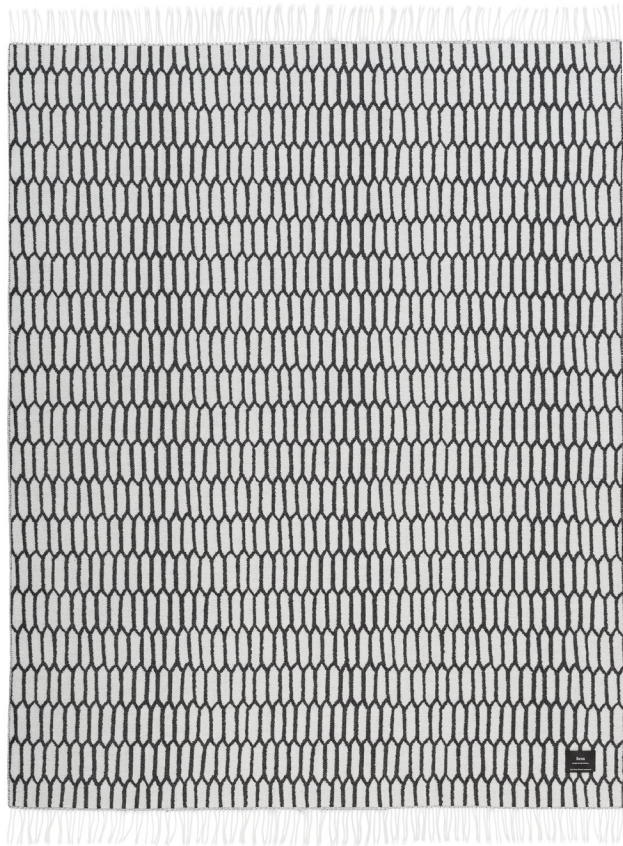


Scribble Throws

by Sylvain Willenz

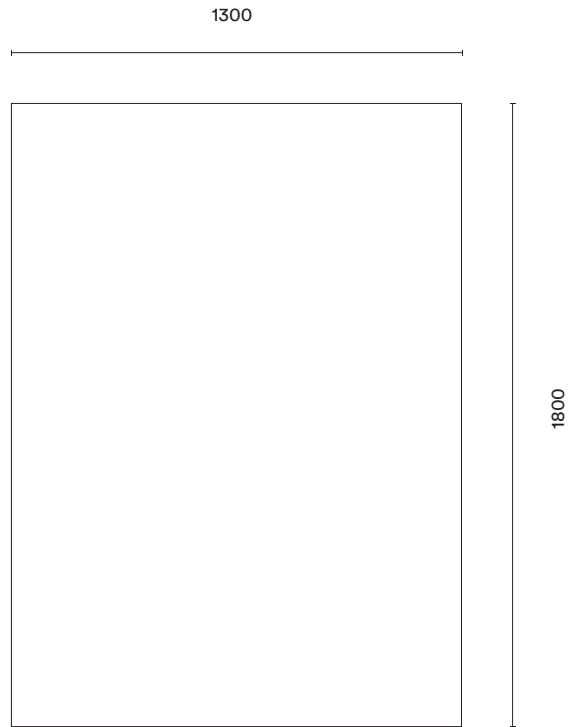
Joyful, deliberate imperfection is at the heart of Sylvain Willenz' Scribble collection, which brings the designer's own geometric hand sketches to life as decadent accent linens and throws. Melt into fashion-forward elegance in three reversible patterns, dreamt up in 100% superfine New Zealand lambswool. One part playful, one part monotone style.



hem

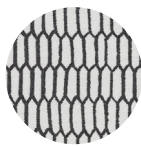
Technical Specifications

Unfolded 1300 × 1800 mm



Materials and Colors

100% New Zealand Merino Wool (Superfine 280g/sqm)
Produced in Lithuania



Kenno
Black, White



Brick
Black, White



Rain
Black, White