

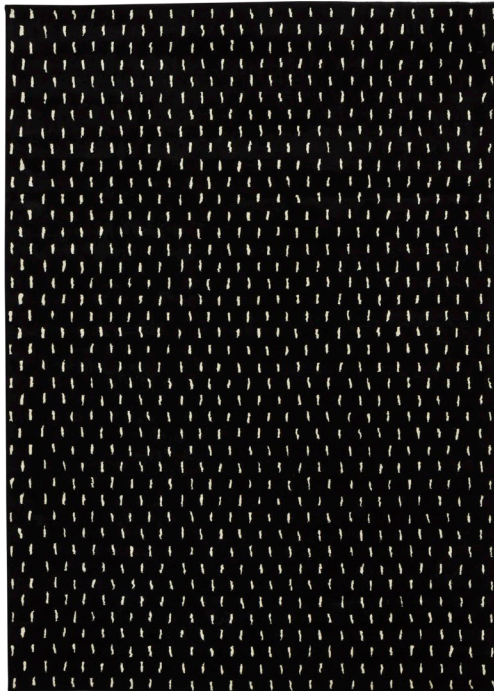
# Rain Rug

by Sylvain Willenz

Joyful, deliberate imperfection is at the heart of Sylvain Willenz' Scribble collection, which brings the designer's own geometric hand sketches to life in home textiles. The Scribble Rugs are a splash of cheerful charm in any room.

Like an over-sized cutting mat or a giant sketchbook, the Grid and Rain patterns are simple, yet impactful.

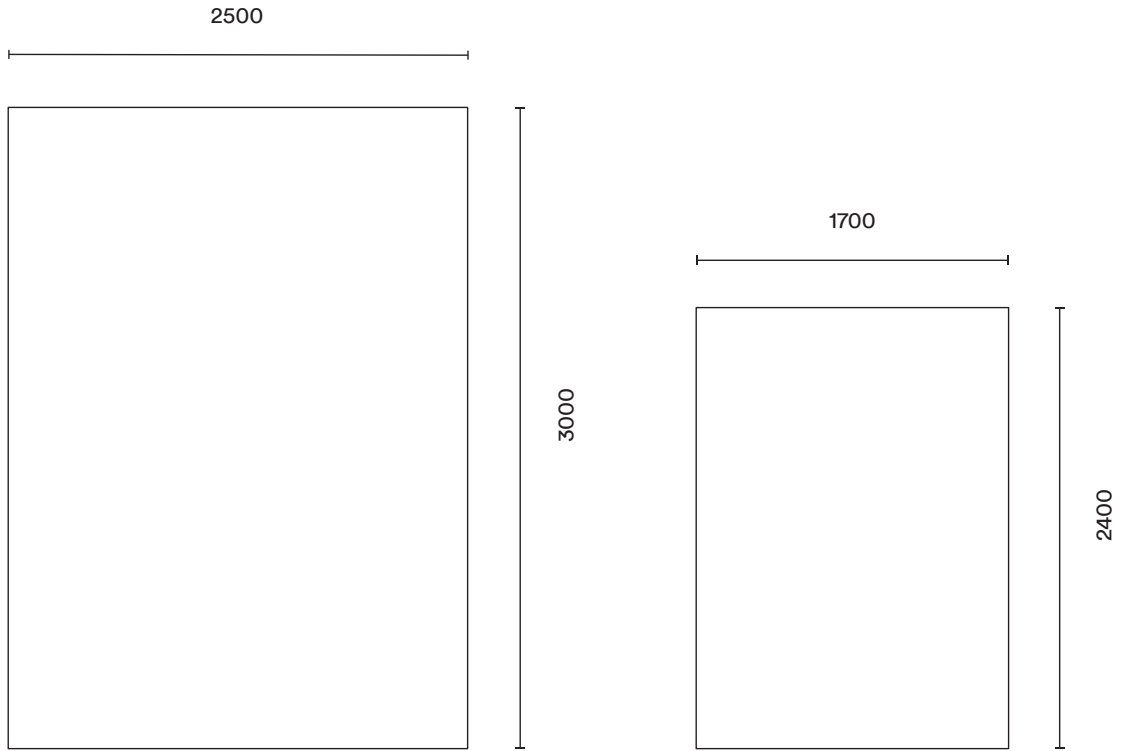
The rugs are produced from 100% wool by a carefully selected family business in India, working according to global standards, such as Rugmark, SGS and Woolmark, to ensure best quality, appropriate working conditions, and with no use of child labor.



**hem**

## Technical Specifications

Large 3000 × 2500 mm  
Medium 2400 × 1700 mm



## Materials and Colors

100% Pure New Zealand Wool  
Hand-tufted in India



Rain

## Care Instructions

Vacuum your rug using a low-powered vacuum cleaner, preferably one with a beater brush. Shedding of loose fibres will occur with new rugs. Use scissors to trim (do not pull) loose yarn to avoid unravelling. Occasional cleaning from professional rug-cleaning company is recommended. Avoid harsh chemicals that could damage or fade your rug. Clean spills promptly by blotting with a clean, undyed cloth. Avoid direct and continuous exposure to sunlight and rotate rug periodically to promote even wear. Use of a rug pad is recommended.

## Certificates



WOOLMARK

100% Pure New Wool