

# Kumo Sofa

by Anderssen & Voll

A ship-smart modular system by Norwegian designers Anderssen & Voll, the Kumo Sofa is available in three texture-rich woolen fabrics – Mare, Graphite and Porcelain. Based on a single module, Kumo can be configured as a 1,2,3,4-seater and beyond. Kumo offers flexibility with an innovative frame and cushion construction allowing components to easily be added, removed or rearranged as your living circumstances change.

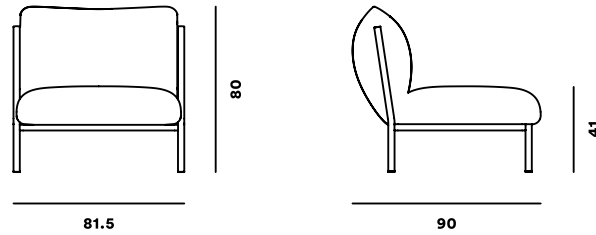


**hem**

# Dimensions Guide

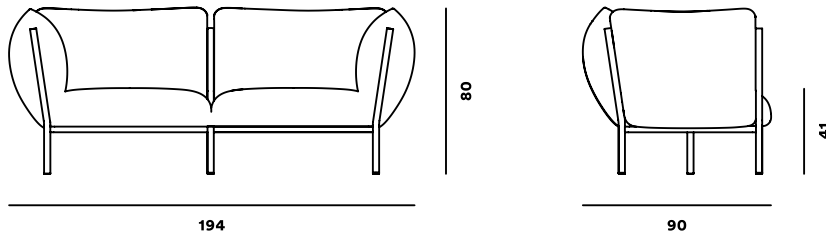
## Kumo Single-Seater

W: 81.5 x L: 90 x H: 80 cm; Seat-Height: 41 cm



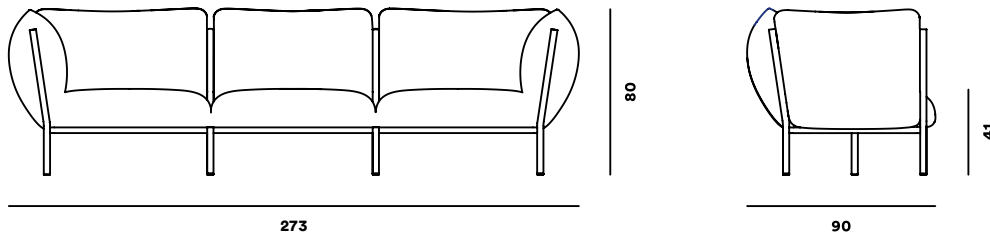
## Kumo 2-Seater

W: 194 x L: 90 x H: 80 cm; Seat-Height: 41 cm



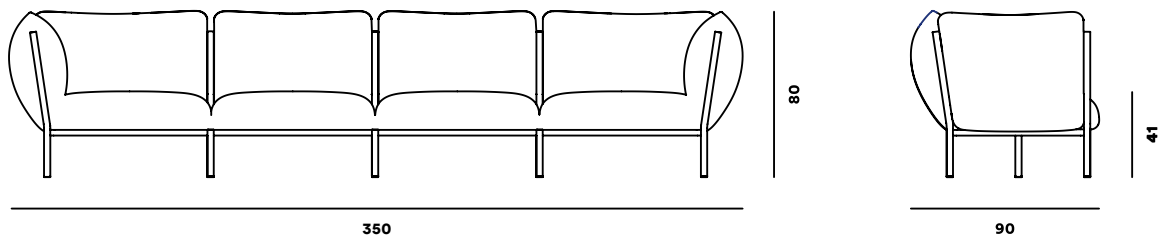
## Kumo 3-Seater

W: 273 x L: 90 x H: 80 cm; Seat-Height: 41 cm



## Kumo 4-Seater

W: 350 x L: 90 x H: 80 cm; Seat-Height: 41 cm



# Material and Colors

## Filling

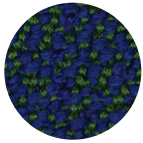
Cold-Injected Molded Polyurethane Foam  
Produced in Lithuania

## Upholstery

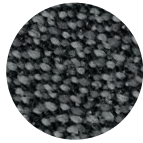
Sera fabric by Rohi Stoffe  
94% virgin wool, 6% polyamide  
Produced in Germany

## Frame

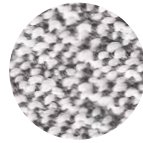
Powder-coated steel  
Produced in Lithuania



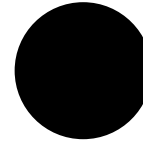
Mare  
Dark Blue



Graphite  
Dark Grey



Porcelain  
Light Grey



Black  
RAL 9005

# Care Instructions

Unlike other natural and man-made fibres, wool is stain resistant by nature.  
Nevertheless, we recommend vacuuming and cleaning it occasionally.

## In Case of Staining

Pick up as much of the dirt as possible with an absorbent cloth or remove solids  
from the surface by hand or with a vacuum cleaner. Do not scratch or rub it.

Most stains can be removed with household cleaning agents (pH-neutral) or shampoo in normal doses,  
dissolved in clear, lukewarm water with the aid of an absorbent cotton or microfibre cloth.

Do not apply undiluted or with hot water.

Pat the area dry with a dry cloth or kitchen paper to absorb the cleaning agent and the stain.

Dab the stain from outside to inside to prevent the stain spreading. Do not rub.

Finally, use pure water without additives to remove the applied cleaning agent and  
dab with a dry cloth or kitchen paper to remove excess liquid. Do not wash.

Woollen fabrics should solely be dry cleaned. Take particular care when handling the material  
in wet or damp condition, as friction and moisture can cause the wool to felt and shrink.