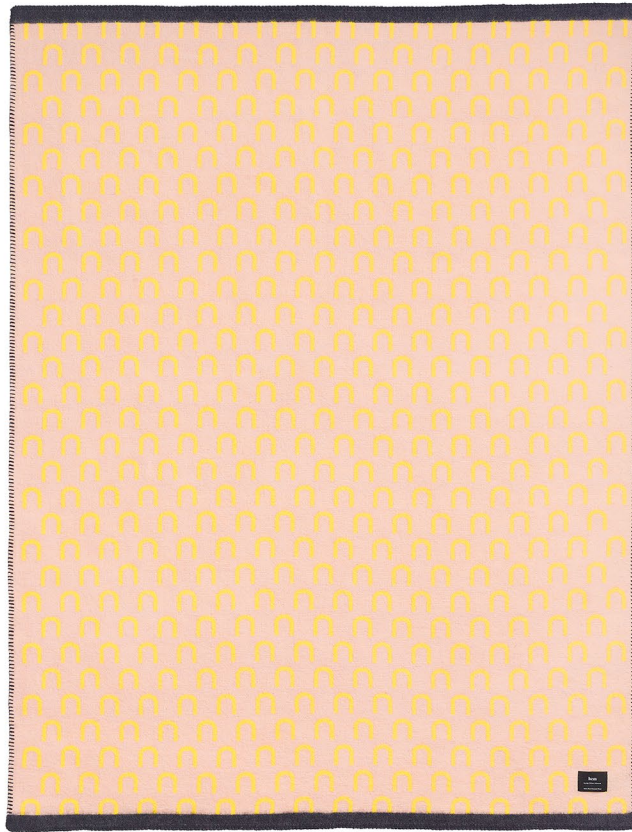


# Arch Throw

by Arthur Arbesser

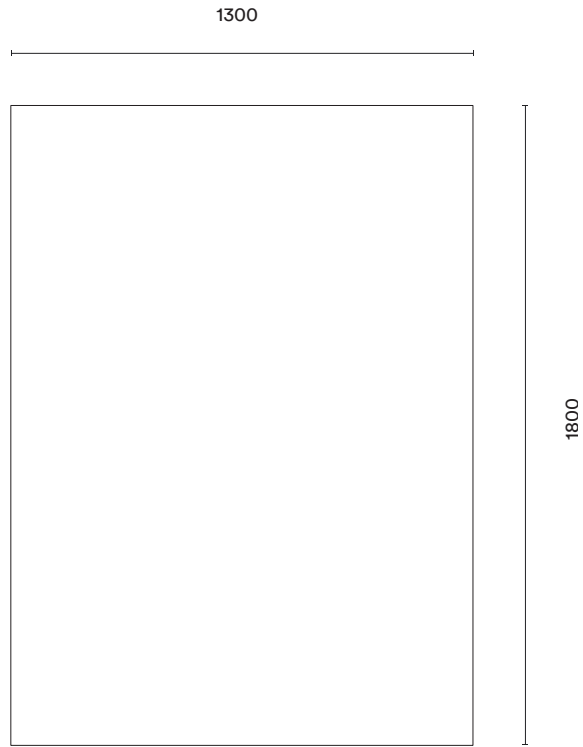
No one dreams up a statement piece like Milan-based fashion designer Arthur Arbesser. Driven by contemporary architecture, the Stripe throws are a vibrant take on a classic pattern. Luxuriously cosy, it is made of superfine 100% New Zealand lambswool.



**hem**

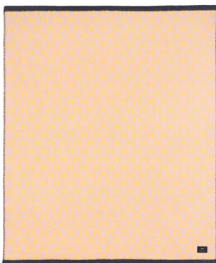
# Technical Specifications

Unfolded: 1300 x 1800 mm



## Materials and Colors

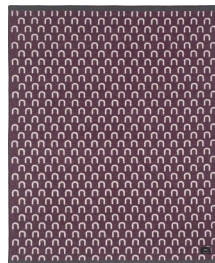
100% New Zealand Lambswool (Superfine 450g/sqm)  
Produced in Lithuania



Yellow / Pink  
Dark blue Border



Black / White  
Orange Border



Aubergine / Light grey  
Anthracite Border



White / Nude  
Green Border