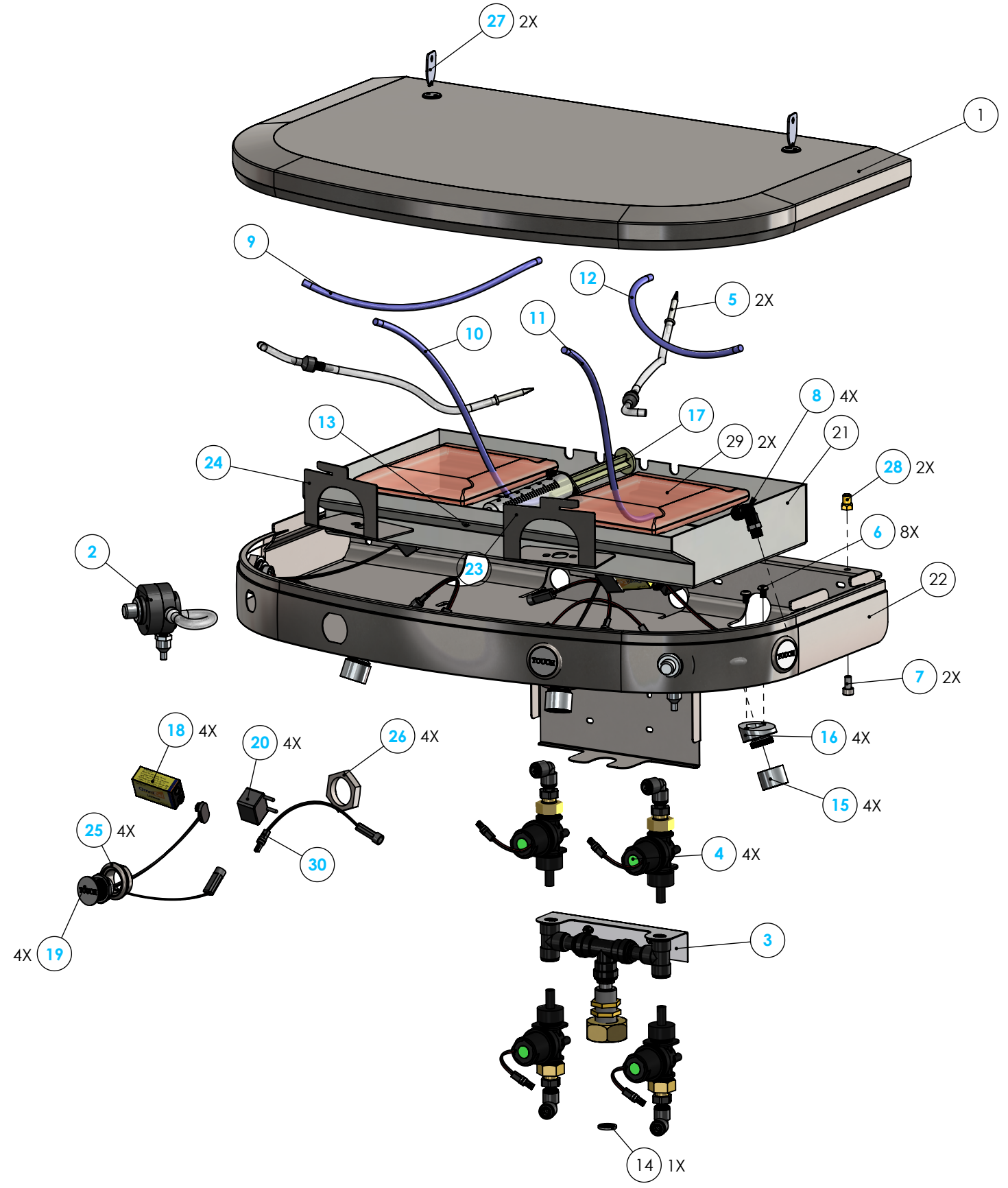


4

3

2

1



ITEM NO.	PART NUMBER	DESCRIPTION	QTY.
1	SF4LID	Lid for 4-User Sanifount	1
2	PBSOAP	Soap Pushbutton Sanifount	2
3	SF4MANIF	Water Manifold for 4-User Sanifount	1
4	SFPZVALVE	Solenoid Assembly for Piezo Sanifount	4
5	SFSOAPTUB	Soap Tubing Assembly - Valve to Bag	2
6	P2032	Screw LBKS M5 x 8 - Stainless	8
7	P2043	Stainless Allen Screw M6 x 12	2
8	P2470	Quick Connect 6 mm Water Tube Elbow	4
9	P2788	PA Water Tubing M6	1.5
10	P2788	PA Water Tubing M6	1.5
11	P2788	PA Water Tubing M6	3.8
12	P2788	PA Water Tubing M6	3.8
13	P2894	Rubber for Soap Syringe	1
14	P2904	Screen Washer	1
15	P2929	0.5 gpm aerator	4
16	P2939	Sanifount IH Nozzle Adaptor	4
17	P3015	Syringe	1
18	P3100	9V Lithium Battery	4
19	P35005	Piezo Button with 9V Connector	4
20	P35006	9V Battery Cover	4
21	P456700	Soap Tray for 4-User Sanifount - DISCONTINUED	1
22	P456820	4-User Shell for Pushbutton Water and Soap Sanifount Head	1
23	P456830L	Left Slotcam for 4-User Sanifount Pushbutton Head	1
24	P456830R	Right Slotcam for 4-User Pushbutton Head	1
25	P483400	Stainless Escutcheon for Piezo Button	4
26	P483410	Stainless Escutcheon Nut for Piezo Button	4
27	P498210	Key for AquaDesign Locks	2
28	P498360	Brass (in for Sanifount Lock	2
29	SOAPHLIL	1 Liter Soap Bag - DISCONTINUED	2
30	U101004	100 mm Piezo Extension Cable	4

Request for Change

Name _____ Date _____

Change Requested _____

TITLE:
4-User Sanifount Piezo Water and Soap Head

SIZE **B** DWG. NO. SF4HEADPZL REV 001

SCALE: 1:20 WEIGHT: SHEET 1 OF 1



PROPRIETARY AND CONFIDENTIAL

THE INFORMATION CONTAINED IN THIS DRAWING IS THE SOLE PROPERTY OF PSD LLC. ANY REPRODUCTION IN PART OR AS A WHOLE WITHOUT THE WRITTEN PERMISSION OF PSD LLC IS PROHIBITED.

UNLESS OTHERWISE SPECIFIED:	NAME	DATE
DIMENSIONS ARE IN INCHES	DRAWN	WH
TOLERANCES:	CHECKED	
FRACTIONAL ±	MFG CHK	
ANGULAR: MACH ± BEND ±		
TWO PLACE DECIMAL ±	File Location:	
THREE PLACE DECIMAL ±		
INTERPRET GEOMETRIC TOLERANCING PER:	COMMENTS:	
MATERIAL Assembly		
FINISH		
DO NOT SCALE DRAWING		

4

3

2

1