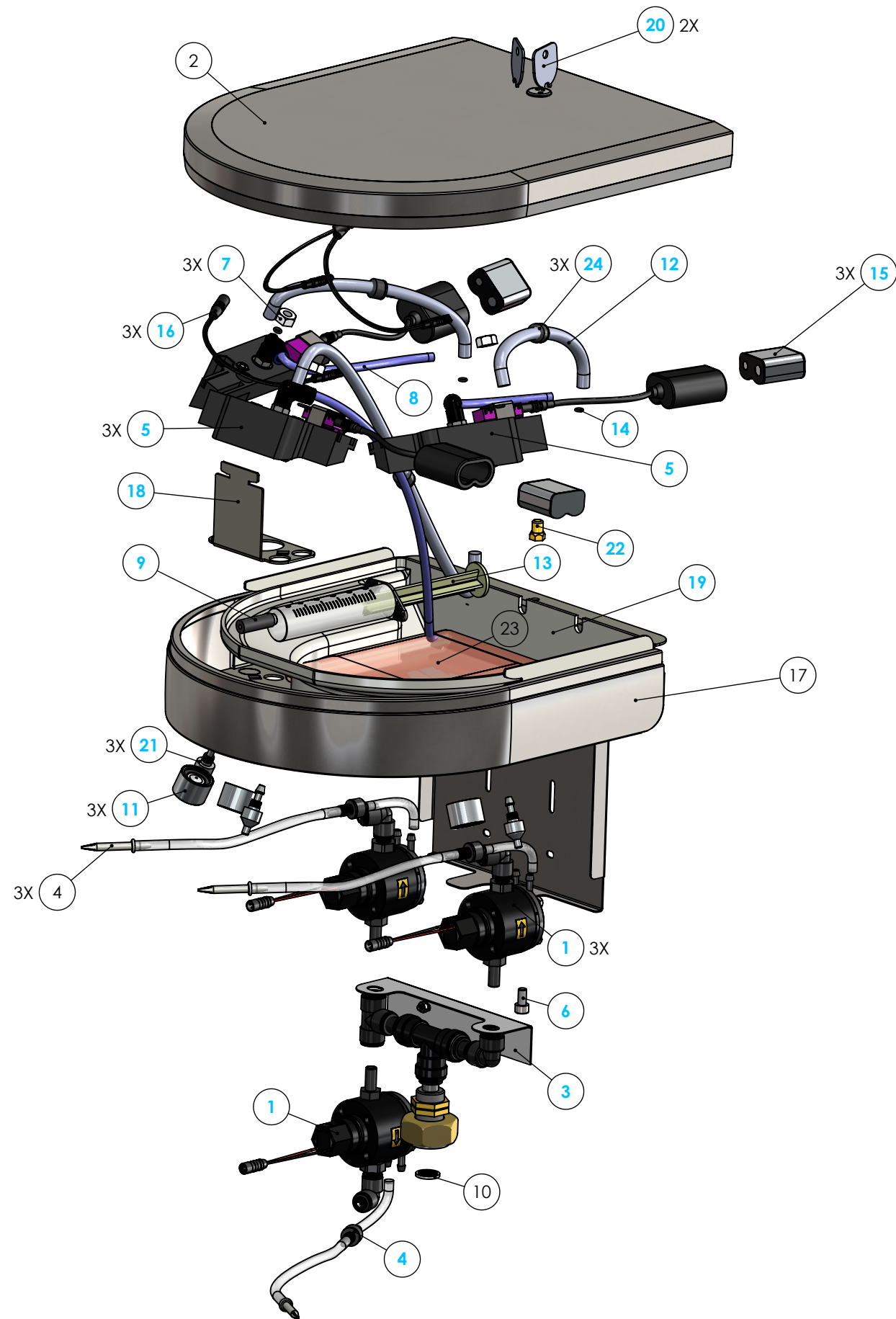


4

3

2

1



ITEM NO.	PART NUMBER	DESCRIPTION	QTY.
1	PSE1802M6	Solenoid Assembly for Sanifount with 6V Sensor	3
2	SF3LID	Lid Assembly for 2/3-User Sanifount	1
3	SF3MANIF	Water manifold for 3-User Sanifount	1
4	SFSOAPTUB	Soap Tubing Assembly - Valve to Bag	3
5	SFCAS	Sensor Cassette Assembly for Sanifount/Solidwave/Saniwave	3
6	P2043	Stainless Allen Screw M6 x 12	1
7	P2081	Nylon Nut for Sanifount Soap Nozzle	3
8	P2788	PA Water Tubing M6	4.5
9	P2894	Rubber for Soap Syringe	1
10	P2904	Screen Washer	1
11	P2929	0.5 gpm aerator	3
12	P3011	Soap Tubing	4.5
13	P3015	Syringe	1
14	P3066	Soap Tubing O-ring (Ø1.5 mm - OD6.5mm ID3.5mm)	12
15	P3103	CR-P2 6V Battery	3
16	P35066	Jumper Cable 1000 mm (RR M-F)	3
17	P455210	3-User Sanifount Shell	1
18	P455270	Lock Latch for 3-User Sensor Sanifount Head	1
19	P455700	Soap Tray for 3-User Sanifount	1
20	P498210	Key for AquaDesign Locks	2
21	P498240	Soap Nozzle for Sanifount	3
22	P498360	Brass fin for Sanifount Lock	1
23	SOAPHL1L	1 Liter Soap Bag - DISCONTINUED	1
24	SPCHV-B	Black Soap Check Valve	3

## Request for Change

Name Date

Change Requested



UNLESS OTHERWISE SPECIFIED:

DIMENSIONS ARE IN INCHES  
 TOLERANCES:  
 FRACTIONAL ±  
 ANGULAR: MACH ± BEND ±  
 TWO PLACE DECIMAL ±  
 THREE PLACE DECIMAL ±

NAME DATE

DRAWN

WH

12/1/2021

CHECKED

MFG CHK

TITLE:

3-User Sanifount Sensor  
Water and Soap Head

PROPRIETARY AND CONFIDENTIAL

INTERPRET GEOMETRIC  
TOLERANCING PER:MATERIAL  
Assembly

FINISH

DO NOT SCALE DRAWING

File Location:

COMMENTS:

SIZE DWG. NO.

B

PR-22210 - SF3HEADL

REV

001

SCALE: 1:10 WEIGHT:

SHEET 1 OF 1

4

3

2

1

THE INFORMATION CONTAINED IN THIS DRAWING IS THE  
 SOLE PROPERTY OF PSD LLC. ANY REPRODUCTION IN PART  
 OR AS A WHOLE WITHOUT THE WRITTEN PERMISSION OF PSD  
 LLC IS PROHIBITED.