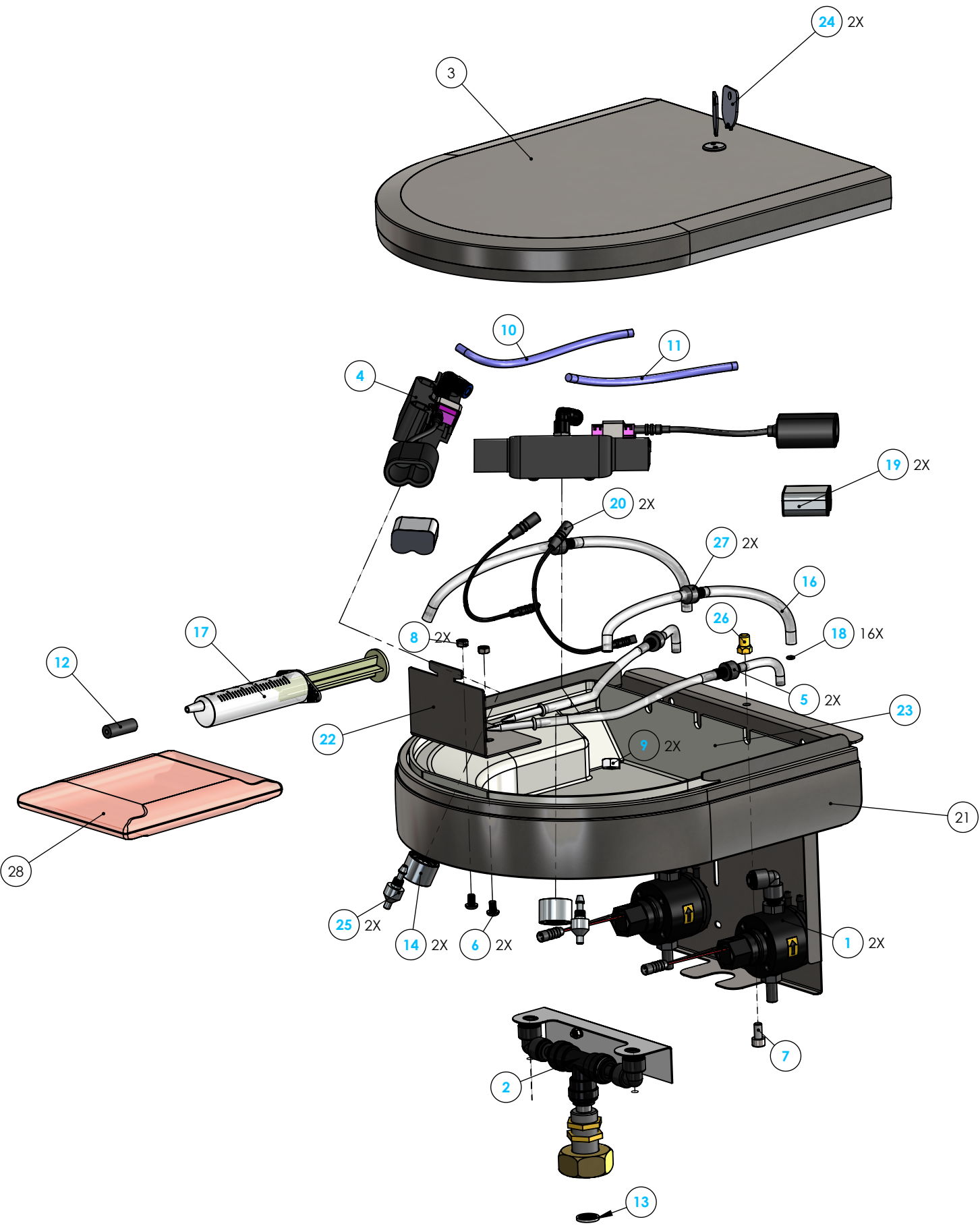


4

3

2

1



ITEM NO.	PART NUMBER	DESCRIPTION	QTY.
1	PSE1802M6	Solenoid Assembly for Sanifount with 6V Sensor	2
2	SF2MANIF	Water Manifold for 2-User Sanifount	1
3	SF3LID	Lid Assembly for 2/3-User Sanifount	1
4	SFCAS	Sensor Cassette Assembly for Sanifount/Solidwave/Saniwave	2
5	SF5OAPTUB	Soap Tubing Assembly - Valve to Bag	2
6	P2032	Screw LBKS M5 x 8 - Stainless	2
7	P2043	Stainless Allen Screw M6 x 12	1
8	P2065	M5-.8 Finished Hex Jam Nut Stainless Steel M5	2
9	P2081	Nylon Nut for Sanifount Soap Nozzle	2
10	P2788	PA Water Tubing 6 mm	1.5
11	P2788	PA Water Tubing 6 mm	1.5
12	P2894	Rubber for Soap Syringe	1
13	P2904	Screen Washer	1
14	P2929	0.5 gpm aerator	2
15	P3011	Soap Tubing	1.5
16	P3011	Soap Tubing	1.5
17	P3015	Syringe	1
18	P3066	Soap Tubing O-ring (Ø1.5 mm - OD6.5mm ID3.5mm)	8
19	P3103	CR-P2 6V Battery	2
20	P35066	Jumper Cable 1000 mm (RR M-F)	2
21	P454210	Shell for 2-User Sensor Sanifount	1
22	P454220	Lock Latch for Sanifount 2/3-User	1
23	P455700	Soap Tray for 3-User Sanifount	1
24	P498210	Key for AquaDesign Locks	2
25	P498240	Soap Nozzle for Sanifount	2
26	P498360	Brass {in for Sanifount Lock	1
27	SPCHV-B	Black Soap Check Valve	2
28	SOAPHL1L	1 Liter Soap Bag - DISCONTINUED	1

Request for Change

Name	Date
Change Requested	

UNLESS OTHERWISE SPECIFIED:		NAME	DATE
DIMENSIONS ARE IN INCHES		DRAWN	WH 11/16/2021
TOLERANCES:		CHECKED	
FRACTIONAL ±		MFG CHK	
ANGULAR: MACH ± BEND ±		File Location:	
TWO PLACE DECIMAL ±		MATERIAL	
THREE PLACE DECIMAL ±		Assembly	
MATERIAL		FINISH	
FINISH		COMMENTS:	
DO NOT SCALE DRAWING			

PROPRIETARY AND CONFIDENTIAL
 THE INFORMATION CONTAINED IN THIS DRAWING IS THE SOLE PROPERTY OF PSD LLC. ANY REPRODUCTION IN PART OR AS A WHOLE WITHOUT THE WRITTEN PERMISSION OF PSD LLC IS PROHIBITED.

TITLE:
2-User Sensor & Soap Water Distribution Head for Sanifount

SIZE	DWG. NO.	REV
B	SF2HEADL	001

SCALE: 1:20 WEIGHT: SHEET 1 OF 1

4

3

2

1

B

B

A

A