

4

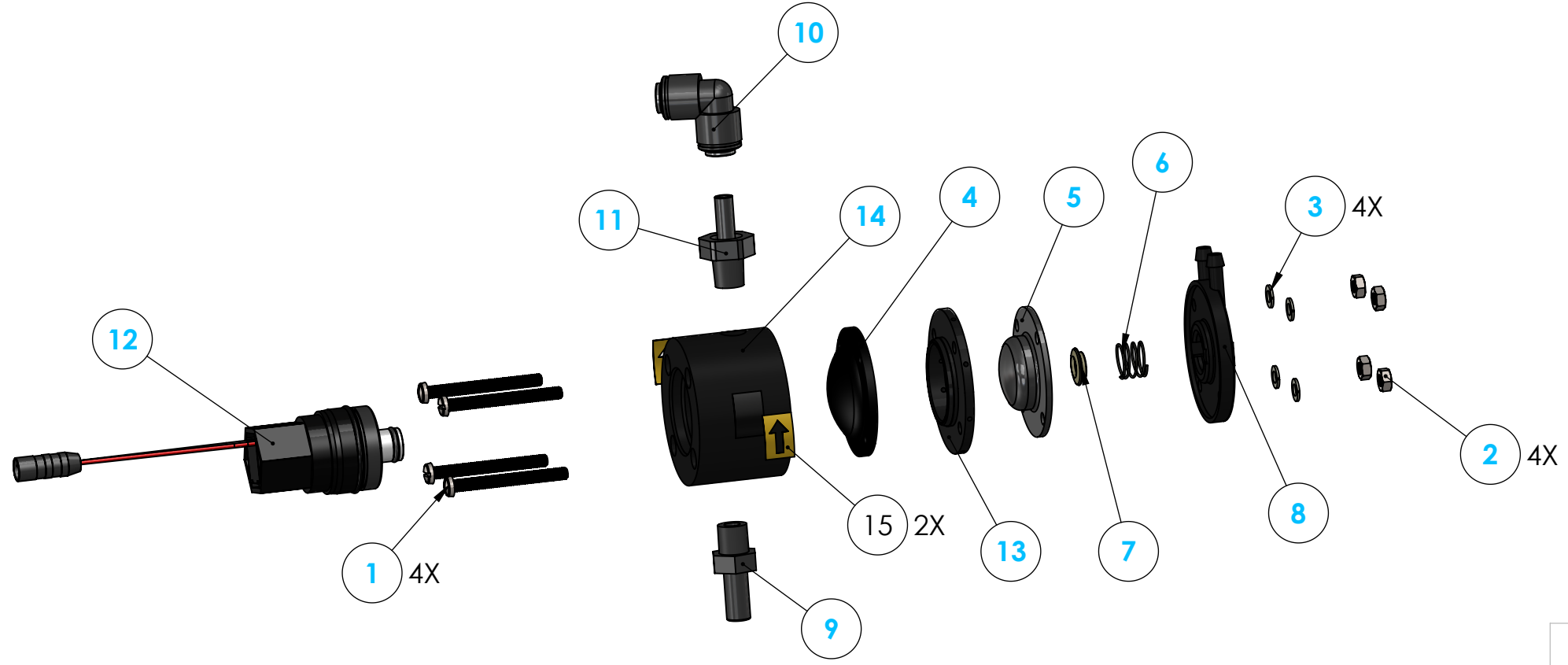
3

2

1

B

B




ITEM NO.	PART NUMBER	DESCRIPTION	QTY.
1	P2002	Stainless Screw M4 x 40	4
2	P2063	M4-.7 Hex Jam Nut	4
3	P2091	Washer AZ 4 DIN 127 Stainless	4
4	P3001	Rubber Membrane Water	1
5	P3002	Soap Diaphragm Valve	1
6	P3003	Spring for Soap Pump	1
7	P3004	Spring Protector Soap Diaphragm	1
8	P3005	Soap Valve Lid	1
9	P35045	RINI Food Adaptor 8 mm x 1/8"	1
10	P35048	6 mm Equal Quick Connect Elbow	1
11	P35049	Stem Connector 6 mm to 1/8M	1
12	P35063	6V Solenoid for Sensor Units	1
13	P427850	Black Soap Valve Seal	1
14	P498620	Valve Body for One Shot Soap Systems	1
15	P8257	Arrow sticker	2

Request for Change

Name	Date
------	------

Change Requested



PROPRIETARY AND CONFIDENTIAL

THE INFORMATION CONTAINED IN THIS DRAWING IS THE SOLE PROPERTY OF PSD LLC. ANY REPRODUCTION IN PART OR AS A WHOLE WITHOUT THE WRITTEN PERMISSION OF PSD LLC IS PROHIBITED.

UNLESS OTHERWISE SPECIFIED:		NAME	DATE
DIMENSIONS ARE IN INCHES		DRAWN	WH
TOLERANCES:		CHECKED	3/7/23
FRACTIONAL ±		MFG CHK	
ANGULAR: MACH ± BEND ±		File Location:	
TWO PLACE DECIMAL ±		COMMENTS:	
THREE PLACE DECIMAL ±		DO NOT SCALE DRAWING	

TITLE:
Solenoid Assembly for Sanifount with 6V Sensor

SIZE	DWG. NO.	REV
B	PSE1802M6	002
SCALE: 1:5	WEIGHT:	SHEET 1 OF 1

A

A

4

3

2

1