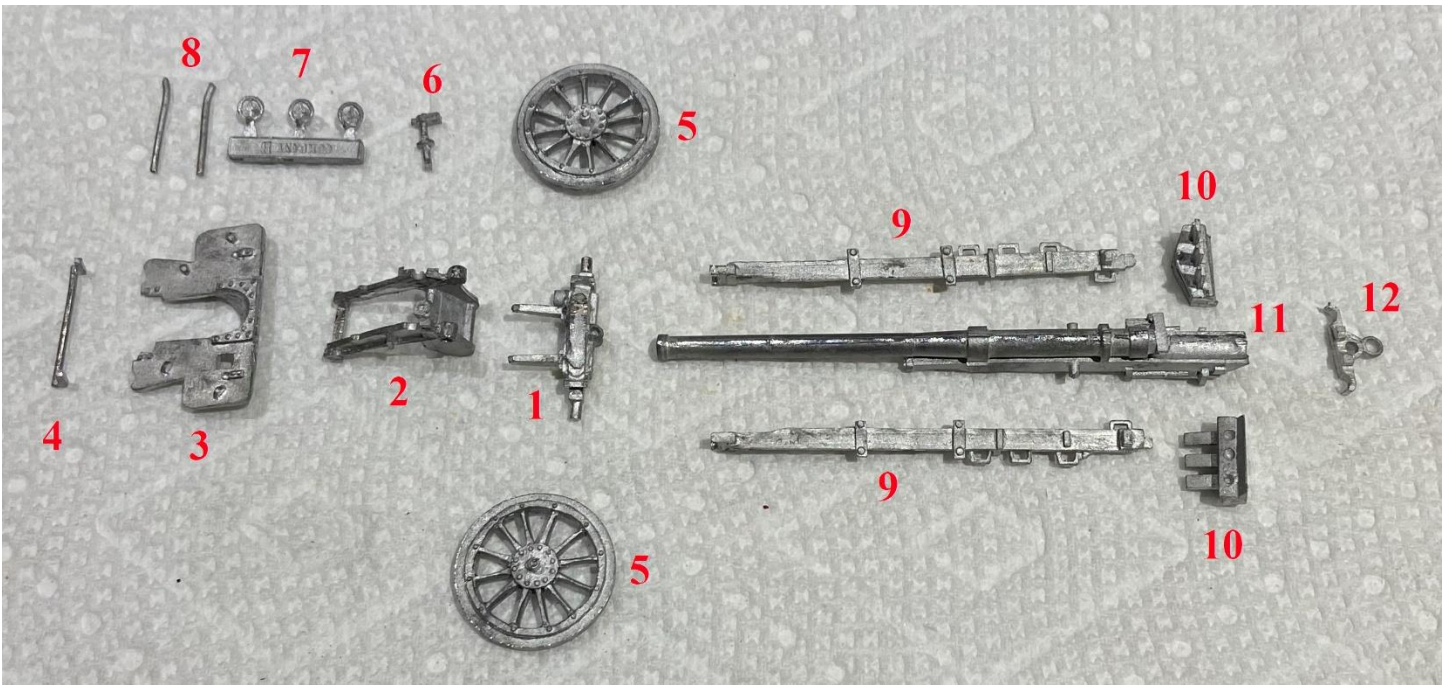
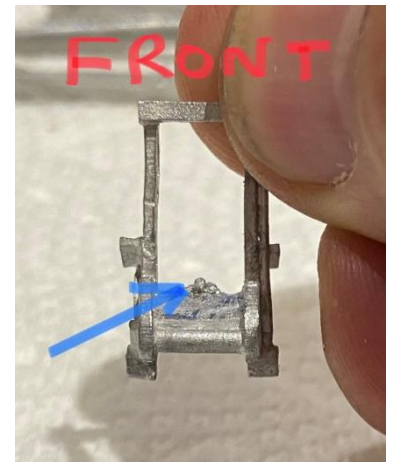
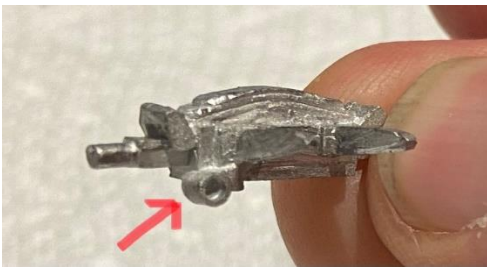


## Type 96 Howitzer Building Instructions

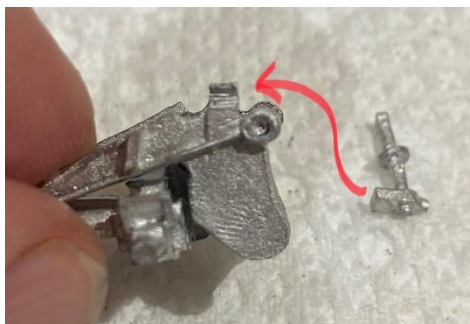
After you clean any molding or flash lines, arrange the pieces as shown in the photo below. In this way, you will be able to more easily orient the pieces in the proper direction and ease their construction. Do not worry – it is actually fairly simple to build! The gun is very well designed and the pieces fit extremely well together.



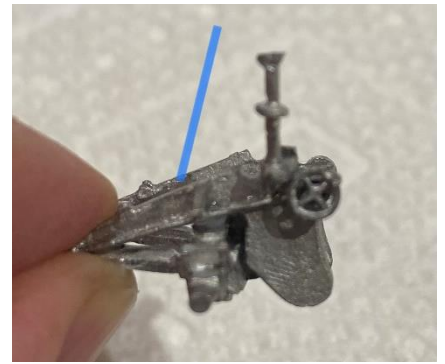
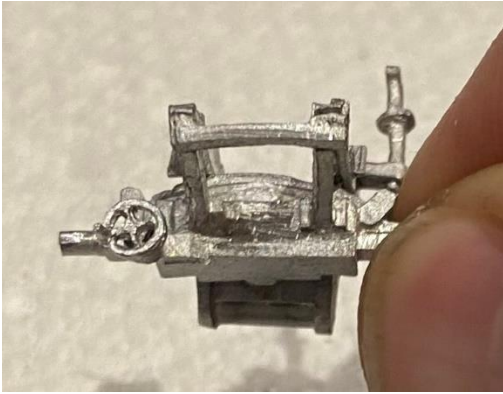
First, take the wheel support (1) and gun support (2) and glue them together. Note the hole on the wheel support faces forward as do the “legs” of the gun support. There is a peg on the wheel support that fits into a hole in the gun support.



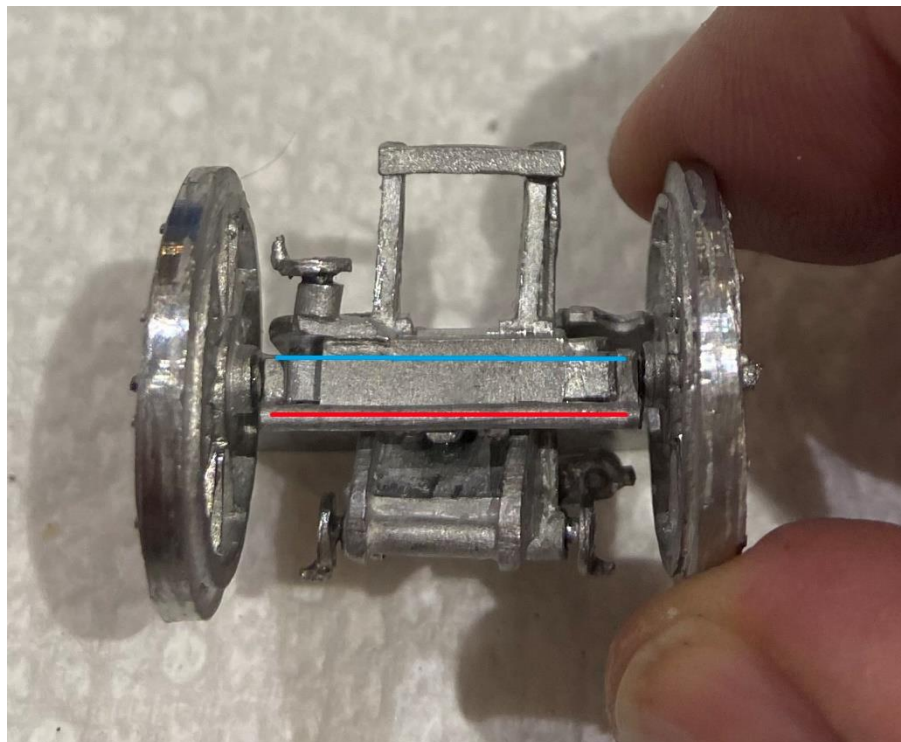
Glue the gunsight (6) to the left side of the gun support. Deepening the groove can be done with a file or hobby knife to ensure a good fit.



Glue the three control wheels (7) to the front of the wheel support and both sides of the gun support. These holes can be deepened with a drill to ensure a good fit. The blue line is where the gun shield (3) will be glued.

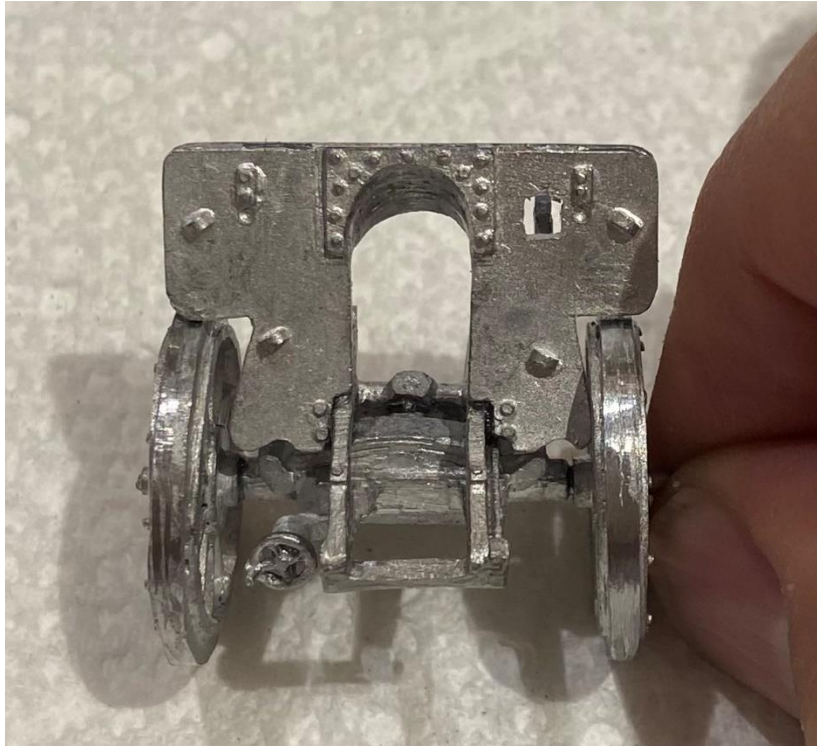


Learning from my mistake, glue the bar (4) to the underside of the wheel carriage BEFORE gluing the wheels in place. The demo models I had showed this to the rear (how I did it/red line) and to the front (red bar). I found that when attaching the gun legs later on, gluing it to the rear slightly interfered with easy placement of the legs (as during the test fitting). I filed the ends of the bottom part of the leg to make it thinner and give a good fit (later on in the build). Either way will work and will not ruin the look of the gun.

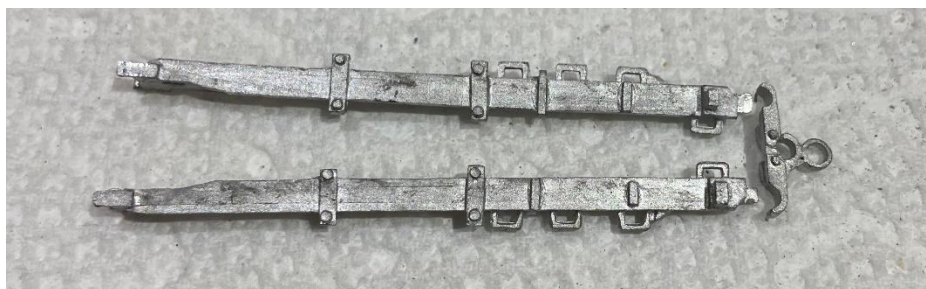


Glue the wheels (5) to the wheel support.

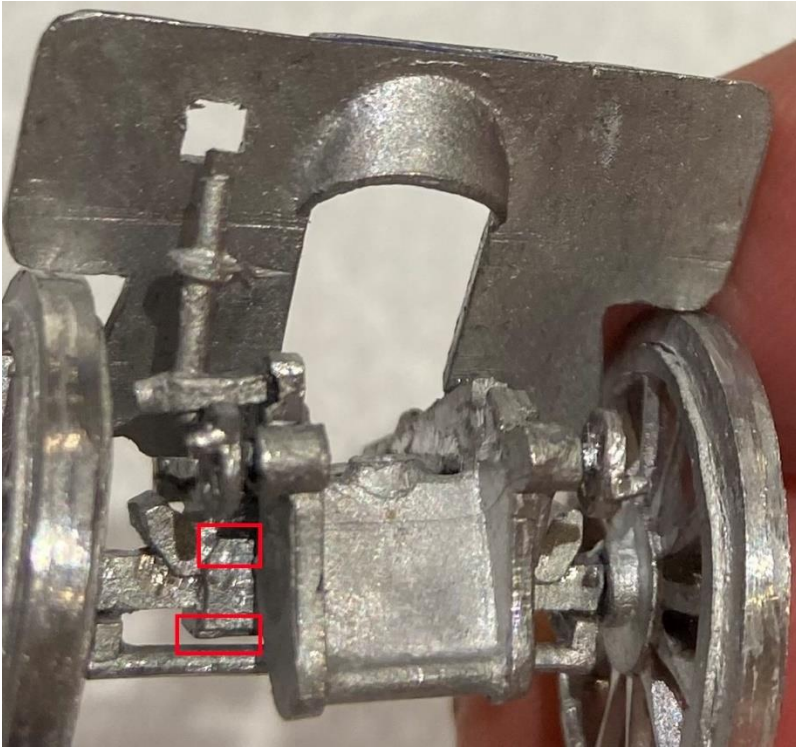
Glue the gun shield (3) to the gun support. The curved part goes to the rear/the side with many rivets is the front/the aimer's hole goes to the left. Adjust it to keep it symmetrical above the wheels and at the appropriate angle (see actual photos). Please refer to the pictures with the blue lines on Page 2.



Arrange the legs (9) and spades (10) together. Note that the side of the legs with three handles is the outside of the gun leg. Note, also, that the "dot" lines up with the leg of the gun with the longer side going to the outside and shorter part going to the inside of the leg. If you want to make a towed version, glue the ends of the legs to the hook (12) and immediately glue the legs to the wheel support.

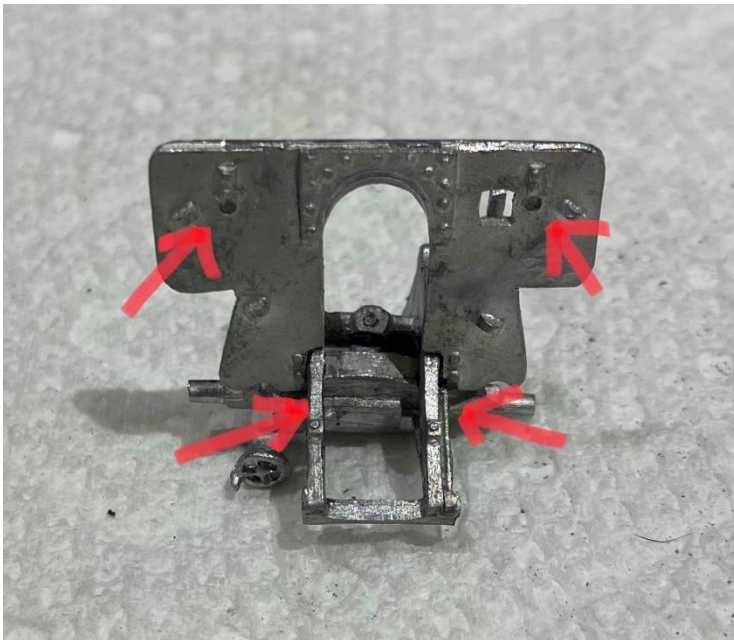


Once the glue on the legs and spades has dried, glue the opposite end to the wheel support immediately to the side of the gun support. Before gluing, test fit to see where this fits best – there are notches in the wheel support in which the end of the leg should fit. The picture also shows how the gunsight fits behind the hole in the shield.

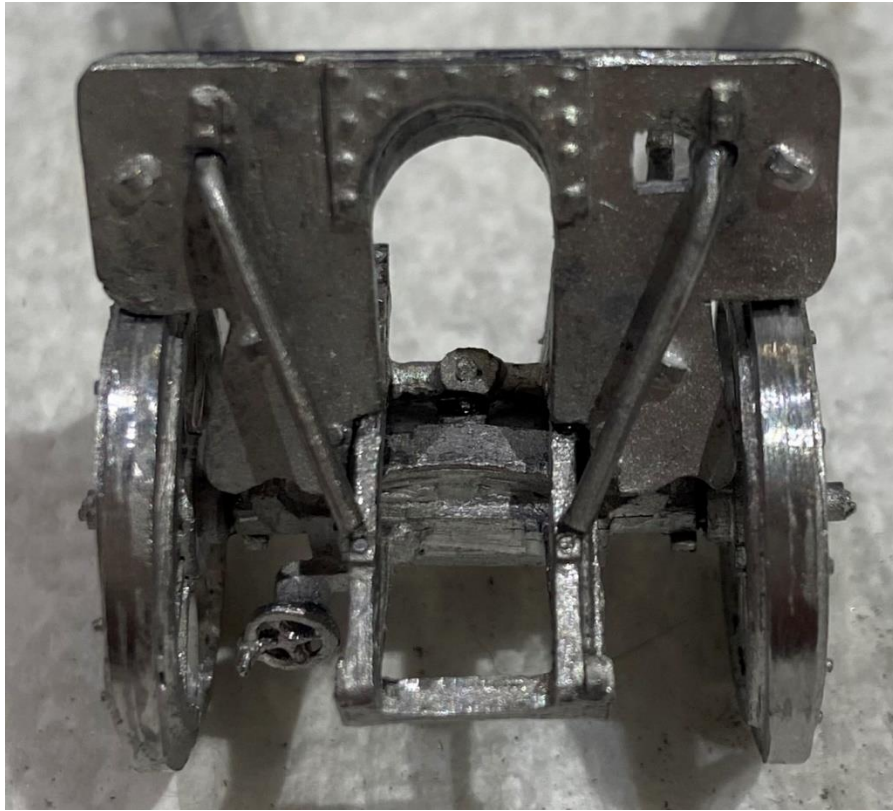


I stabilized mine while the super glue dried to hold everything in the position and hold the gun shield in the angle I preferred.

The gun shield supports (8) should be positioned behind the notch on the gun support and into the hole on the gun shield and glued in place. I bent the top of mine and filed the bottom of the other end to get a better fit on the gun (see the red lines in the picture).



The front of the gun should look like this.



Finally, slide the gun barrel in from the rear of the gun shield until the side pegs rest in the semi-circles of the gun support. Adjust the angle to suit your tastes. Happy hunting!

