

ZULU-03

CASE & DIAL

Solid 316 Stainless Steel Case with Durable Black PVD Finish
Screw Down Stainless Steel Case Back with Mineral Glass Window
Luminescent Hands & Numerals
Screw Down Crown 7.5 mm Diameter
Water Resistance: 100 m
Watch Case: 42 mm x 42 mm
Distance Between Lugs: 22 mm
Thickness: 13 mm
Weight: 115 g



MOVEMENT

8215 Miyota Japanese Automatic Movement
40-Hour Power Reserve
Accurate to +40-20 Seconds Per Day

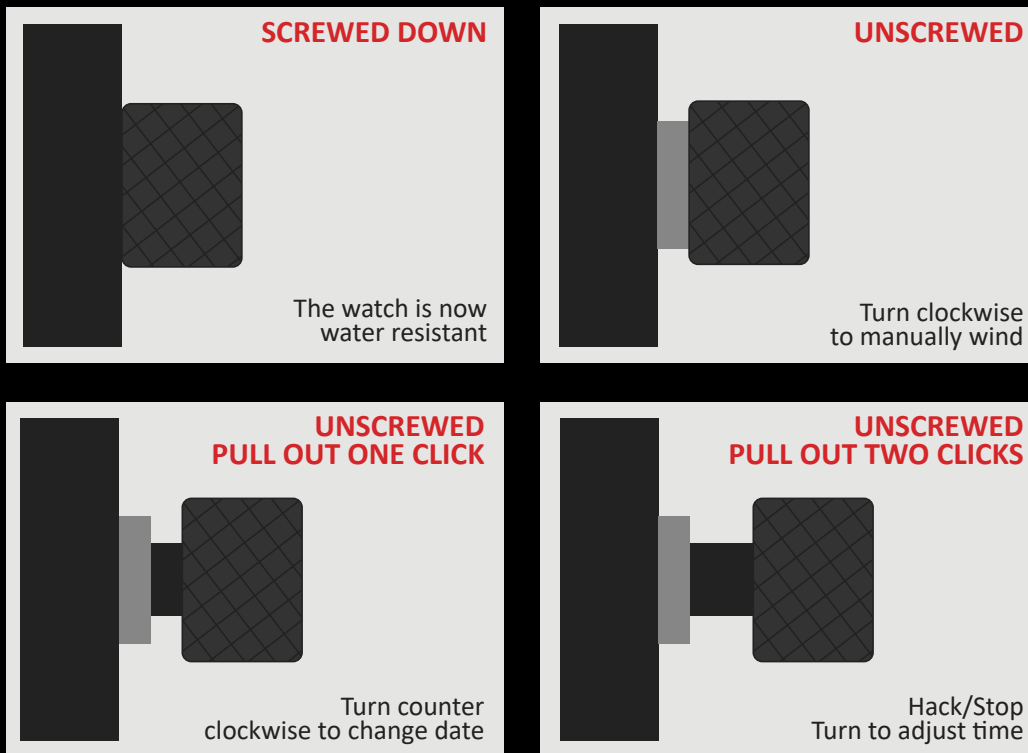
WARRANTY

Trintec Watches are warranted to be free from defects in material and workmanship under normal service for a period of **one year** from the date of purchase. This warranty does not apply to glass or water damage resulting from accidents, alterations or misuse. During the warranty period, return the product with proof of purchase to the dealer for replacement.

Trintec Industries Inc. 200 Fuller Rd., Unit 15 Ajax, ON L1S7G9

www.trintec.com

CROWN POSITIONS



THIS WATCH IS ONLY WATER RESISTANT WHEN THE CROWN IS SCREWED DOWN!

INSTRUCTIONS

WINDING THE MAINSPRING

This watch will automatically wind the mainspring while being worn.
If the watch has stopped, it should be hand wound to restart.
The reserve time from being fully wound is about 40 hours.

1. Unscrew the crown
2. Turn the crown clockwise 20-30 times
3. Push the crown in and screw down

SETTING THE TIME

1. Unscrew the crown
2. Pull the crown out two clicks (this "hacks" or stops the movement)
3. Turn the crown to adjust the hour and minute hands
4. Push the crown in and screw down

SETTING THE DATE

1. Unscrew the crown and pull the crown out one click
2. Turn the crown counter clockwise to set the date
3. Push the crown in and screw down

If set between 9 PM and 4 AM, the date may not change the following day.