

# COPILOT GMT

## CASE & DIAL

316L Stainless steel case with sand blasted stainless or black PVD finish  
Solid wrist pins with real screws  
Screw down case back  
Screw down crown  
Precision 120 click unidirectional ratchet style bezel  
Japan LumiNova on dial and hands  
Sapphire crystal with AR coating  
Date display  
Water resistance: 20 ATM/660 ft/200 m

## MOVEMENT

Swiss made Ronda 515-24 Quartz movement  
Approx. 3-year battery life



## DIMENSIONS

Watch dimensions: 42 mm x 42 mm (1.65 in)  
Bezel diameter: 43 mm (1.7 in)  
Distance between lugs: 22 mm (0.9 in)  
Thickness: 15 mm (0.6 in)  
Weight: 120 g

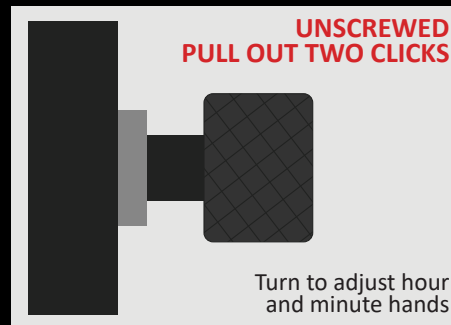
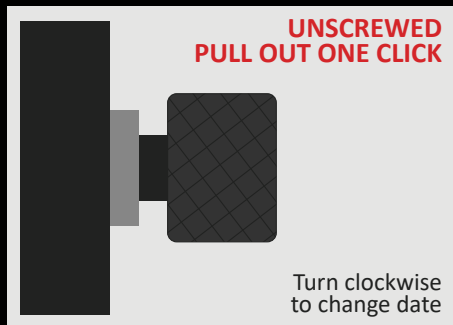
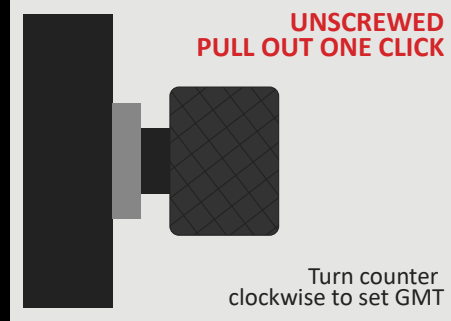
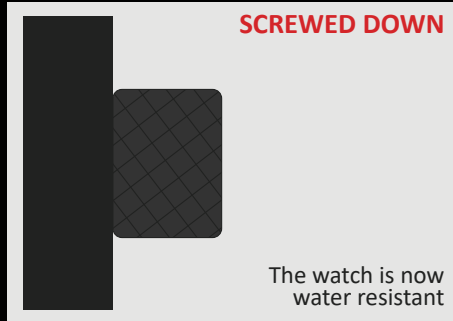
## WARRANTY

Trintec Watches are warranted to be free from defects in material and workmanship under normal service for a period of **one year** from the date of purchase. This warranty does not apply to glass or water damage resulting from accidents, alterations or misuse. During the warranty period, return the product with proof of purchase to the dealer for replacement.

*Trintec Industries Inc. 200 Fuller Rd., Unit 15 Ajax, ON L1S7G9*

[www.trintec.com](http://www.trintec.com)

## CROWN POSITIONS



**THIS WATCH IS ONLY WATER RESISTANT  
WHEN THE CROWN IS SCREWED DOWN!**

### INSTRUCTIONS

#### SETTING GMT

1. Unscrew the crown and pull the crown out one click
2. Turn the crown counter clockwise to set GMT
3. Push the crown in and screw down

#### SETTING THE DATE

1. Unscrew the crown and pull the crown out one click
2. Turn the crown clockwise to set the date
3. Push the crown in and screw down

*(If set between 9 PM and 4 AM, the date may not change the following day.)*

#### SETTING THE TIME

1. Unscrew the crown
2. Pull the crown out two clicks
3. Turn the crown to adjust the hour and minute hands
4. Push the crown in and screw down