

FIRST KITS IN THE WORLD WITH ALL ACCESSORIES
TOTALLY WIRE-FREE



KIT K800 Wi-Fi



KIT K500 Wi-Fi



KIT PRINCE Wi-Fi



KIT PREMIER Wi-Fi



KIT IDRO Wi-Fi



KIT KING Wi-Fi



25014 CASTENEDOLO (BS) - ITALY

Via Matteotti, 162

phone +39 030 2135811

fax +39 030 21358278 - 030 21358279

www.ribind.it - ribind@ribind.it

COMPANY WITH QUALITY MANAGEMENT
SYSTEM CERTIFIED BY DNV
= ISO 9001:2008 =



Can be installed according to current European Norms

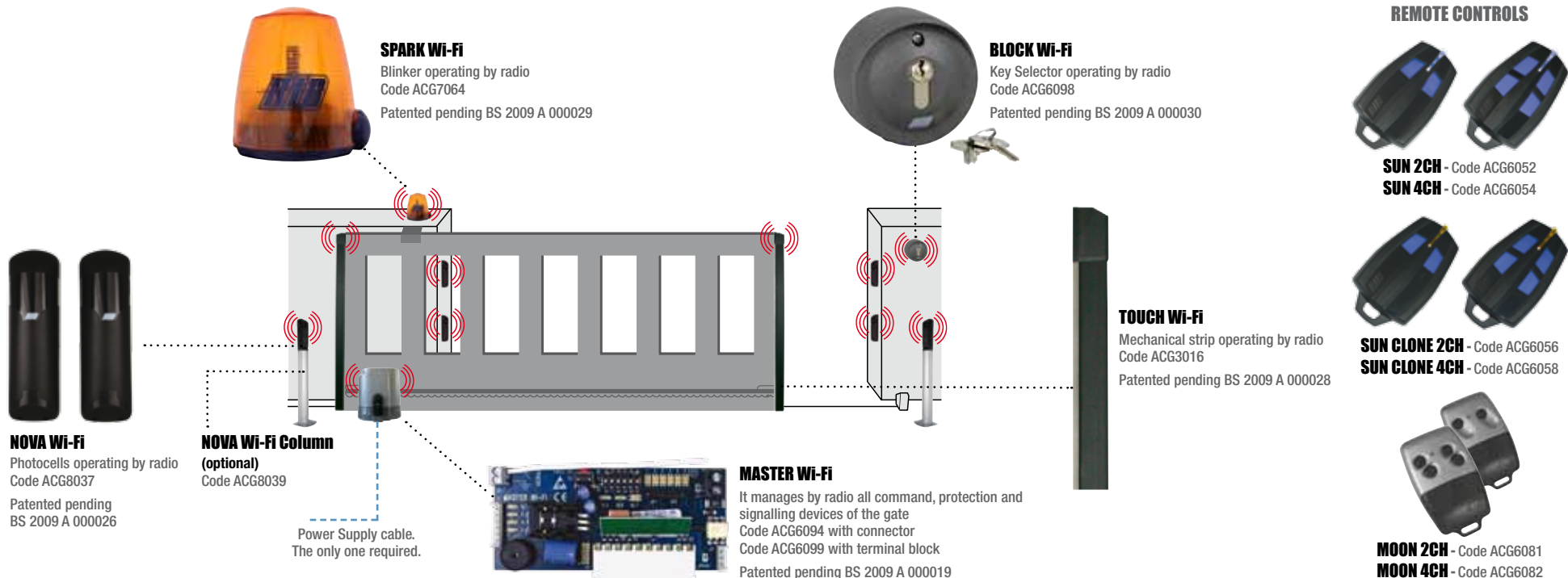


This product has been completely developed and built in Italy

RIB® Wi-Fi

**THE FIRST SYSTEM
IN THE WORLD
TO MANAGE
ALL THE ACCESSORIES
OF THE GATE
TOTALLY
WIRE-FREE**





NOVA Wi-Fi
Photocells operating by radio
Code ACG8037
Patented pending
BS 2009 A 000026

NOVA Wi-Fi Column (optional)
Code ACG8039

Power Supply cable.
The only one required.



MASTER Wi-Fi
It manages by radio all command, protection and signalling devices of the gate
Code ACG6094 with connector
Code ACG6099 with terminal block
Patented pending BS 2009 A 000019

TOUCH Wi-Fi
Mechanical strip operating by radio
Code ACG3016
Patented pending BS 2009 A 000028

BLOCK Wi-Fi
Key Selector operating by radio
Code ACG6098
Patented pending BS 2009 A 000030

SPARK Wi-Fi
Blinker operating by radio
Code ACG7064
Patented pending BS 2009 A 000029

REMOTE CONTROLS

SUN 2CH - Code ACG6052
SUN 4CH - Code ACG6054

SUN CLONE 2CH - Code ACG6056
SUN CLONE 4CH - Code ACG6058

MOON 2CH - Code ACG6081
MOON 4CH - Code ACG6082

RED Wi-Fi THE FIRST WIRELESS SYSTEM IN THE WORLD

Save time and money with the new RIB Wi-Fi system. The accessories require no cables, wiring or conduits because the MASTER Wi-Fi manages, beside from the remote control, all the accessories specifically designed in Wi-Fi mode.

MASTER Wi-Fi

MASTER Wi-Fi looks like a standard radio receiver, but it does more than just command the MOON and SUN remote controls. It simultaneously and remotely manages the BLOCK Wi-Fi key selector switch, the NOVA Wi-Fi photocells, the TOUCH Wi-Fi strip and the SPARK Wi-Fi blinker.

It is the ideal solution for bringing existing systems up to the Standards, as well as for quick installations of new systems under EN 13241-1.

The safety devices such as photocells, safety strips and blinker are managed by MASTER Wi-Fi at 868 MHz. Remote controls and key selector work at 433 MHz. The version of MASTER Wi-Fi seen in the picture can be connected to all RIB panels, both dated and recent versions.

The model with terminal block can be connected to panels of any brand or make.

Moreover, when the charge of batteries of the photocell and safety strip is running low, MASTER Wi-Fi emits an alarm warning every time the gate automation is activated.

It is an EN13849-2:2008 certified safety device that also acts as a Class 2 protection when connected to an electronic RIB panel.

The system firmware is EN61508-3:2001 certified.

NOVA Wi-Fi

The NOVA Wi-Fi photocells are the first to have battery operated transmitters and receivers, which work in remote mode.

They operate with 2 sets of standard AA alkaline batteries that last up to 3 years.

The product is fully certified and is derived from the RED radio-relay system, the first to obtain EN13849-2 (2008) certification, with class 2 validation.

The posts provided with the system make it easy to add extra photocells to existing systems in order to bring it up to the Standards.

TOUCH Wi-Fi

The TOUCH Wi-Fi sensitive edge is the first strip in the world which has an incorporated transmission circuit that requires no electrical connection (aerial or ground) to the command unit.

Beside from saving time when connecting an external transmitter in the proximity of the strip, the system allows for a better looking automatic gate opener, since the transmitter is incorporated into the product.

The product is certified EN13849-2 (2008) with class 2 validation. It functions with 3 standard AA alkaline batteries that last 3 years.

SPARK Wi-Fi

The SPARK Wi-Fi blinker is the first wireless blinker for industrial automation in the world.

The unit is switched on and off in remote radio command by the MASTER Wi-Fi, and it is equipped with three high luminous LEDs in order to provide a 360° visible gate signal.

The unit needs 3 standard C alkaline batteries that last for up to 3 years.

BLOCK Wi-Fi

The BLOCK Wi-Fi key selector switch has been in production for a couple of years; and also requires no cable connection to the command unit.

It is programmed like any standard RIB remote control.

After having read, think about:

- how many hours saved by installing an automatic Wi-Fi system.
- how many times you had to depend on a construction service for mason work.
- how many times you had to drill into the support columns of the most beautiful gates, in marble or stone, with the fear of ruining them.
- how many times it was not possible to bring a gate up to the Standards because it implied ground work and drilling into the columns to add a set of extra photocells or safety strips.
- how much time you lost reading manuals on connecting every single accessory.
- how many gates need at least an extra set of photocells, while this system (MASTER Wi-Fi + NOVA Wi-Fi photocells + Columns for NOVA) allows rapid installation on panels of any brand or make.
- how your customers will be greatly impressed with the time it takes to install the automatic system and bring it up to the Standards.